

5/28/2016

BM #17 ELEVATION = 797.52'
N = 871082 E = 1751866
-L- STATION 474+81 271' LEFT
R/R SPIKE SET IN 9" CHERRY

HNTB HNTB NORTH CAROLINA, P.C.
248 W. 51st Street, Suite 200
Raleigh, North Carolina 27609
NC License No. C-15584

PLANS PREPARED BY:
PARSONS
RALEIGH, NORTH CAROLINA (99) 854-1345
NC LICENSE NO. F-0246
FOR NORTH CAROLINA DEPT. OF TRANSPORTATION

PROJECT REFERENCE NO. U-2524D SHEET NO. 26

ROADWAY DESIGN ENGINEER

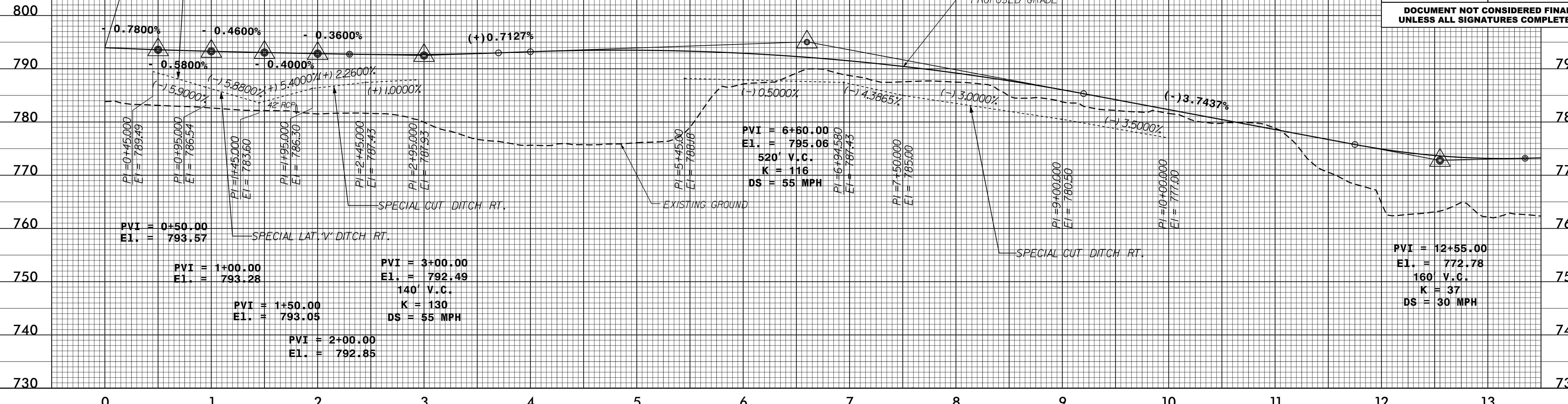
HYDRAULICS ENGINEER

PROFESSIONAL SEAL
37874
JAMES A. BROWN
REGISTERED PROFESSIONAL ENGINEER
HYDRAULICS AND CIVIL
6/16/2011

PROFESSIONAL SEAL
37874
JAMES A. BROWN
REGISTERED PROFESSIONAL ENGINEER
HYDRAULICS AND CIVIL
6/16/2011

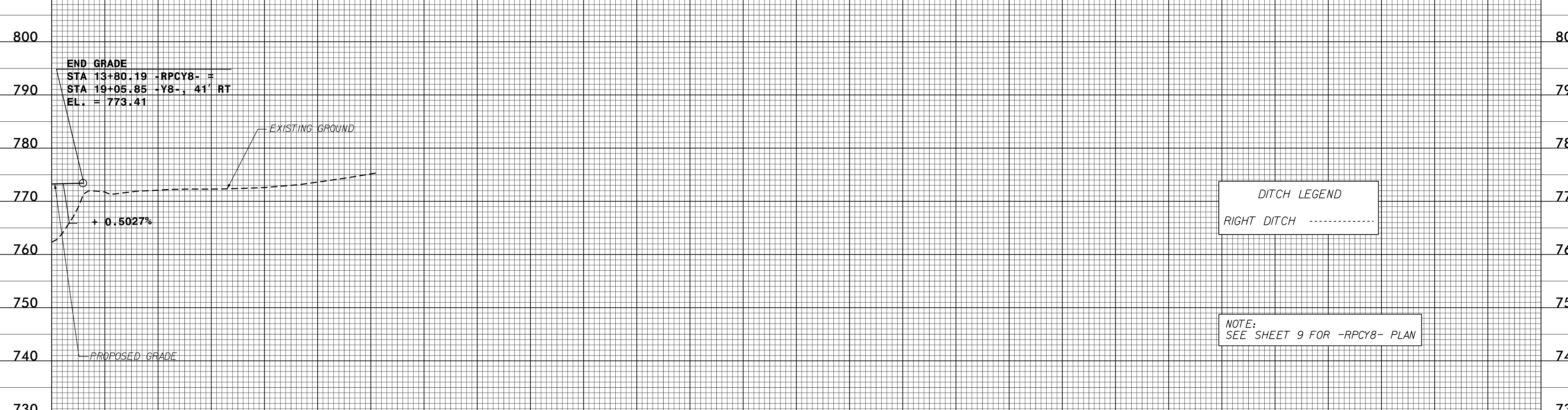
DOCUMENT NOT CONSIDERED FINAL
UNLESS ALL SIGNATURES COMPLETED

-RPCY8-



BM #18 ELEVATION = 808.40'
N = 872785 E = 1753511
-Y8- STATION 10+00
N 18° 44' 24.6" W DIST 575.94'
R/R SPIKE SET IN 22" OAK

-RPCY8-



END GRADE
STA 13+80.19 -RPCY8- =
STA 19+05.85 -Y8- , 41' RT
EL. = 773.41

DITCH LEGEND
RIGHT DITCH - - - - -

NOTE:
SEE SHEET 9 FOR -RPCY8- PLAN

C:\NYS\2016\2524\U2524D\RDY_PSH_26.dgn