

5/28/99

BM #18 ELEVATION = 808.40'  
N = 872785 E = 1753511  
-Y8- STATION 10+00  
N 18° 44' 24.6" W DIST 575.94'  
R/R SPIKE SET IN 22" OAK

BM #19 ELEVATION = 841.27'  
N = 869867 E = 1754214  
-Y8- STATION 31+26  
S 22° 19' 57.9" E DIST 312.72'  
R/R SPIKE SET IN 18" OAK

STA 494+03.22 -LREV- RT  
STA 494+06.08 -LREV- LT  
BEGIN BRIDGE

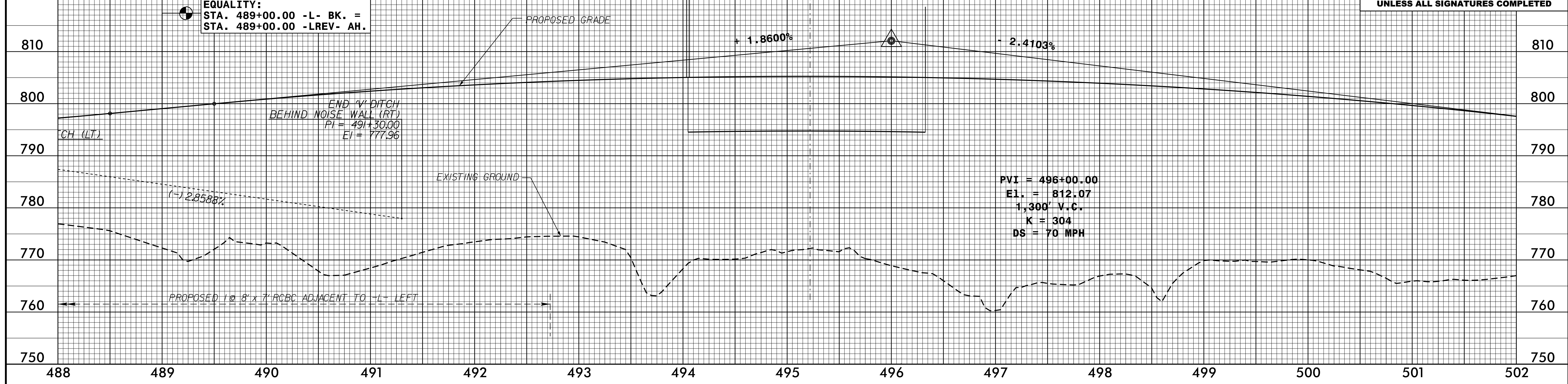
STA 496+32.87 -LREV-  
END BRIDGE (LT & RT)

**HNTB**  
HNTB NORTH CAROLINA, P.C.  
248 E. 914 Poppo Road, Suite 200  
Raleigh, North Carolina 27609  
NC License No. C-1584

PLANS PREPARED BY:  
**PARSONS**  
RALEIGH, NORTH CAROLINA, (919) 854-1345  
NC LICENSE NO. F-0246  
FOR NORTH CAROLINA DEPT. OF TRANSPORTATION

PROJECT REFERENCE NO. U-2524D	SHEET NO. 18
ROADWAY DESIGN ENGINEER	HYDRAULICS ENGINEER

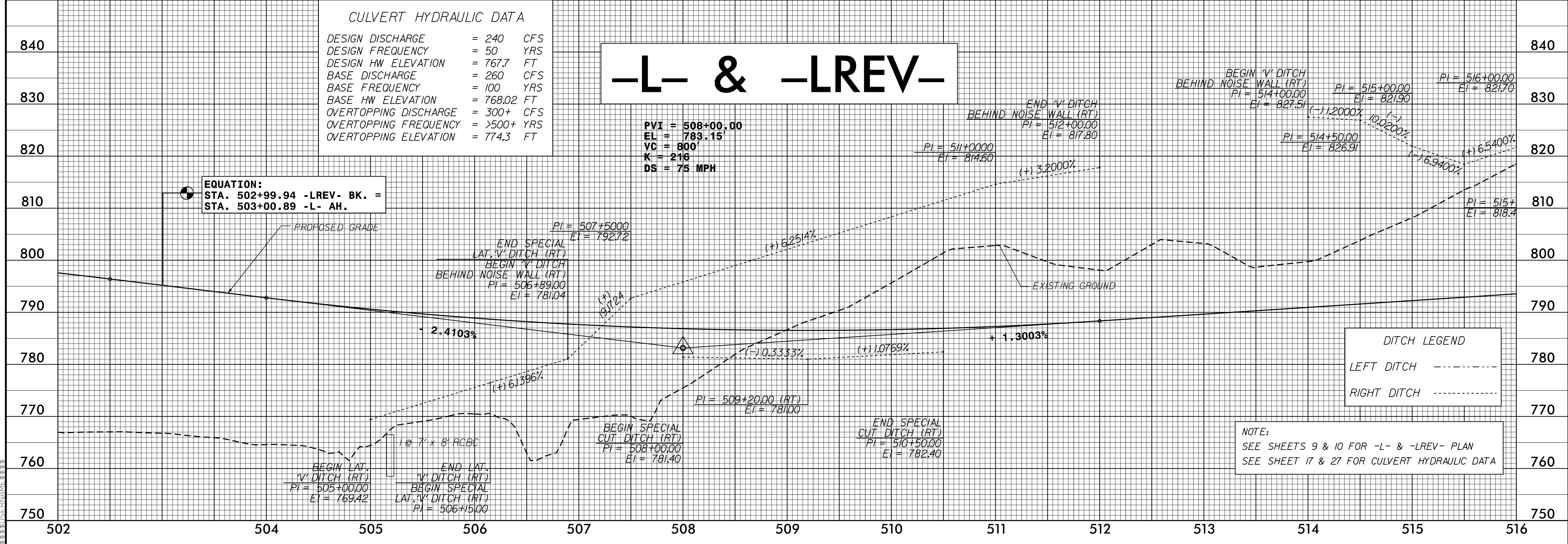
DOCUMENT NOT CONSIDERED FINAL  
UNLESS ALL SIGNATURES COMPLETED



CULVERT HYDRAULIC DATA

DESIGN DISCHARGE	= 240 CFS
DESIGN FREQUENCY	= 50 YRS
DESIGN HW ELEVATION	= 767.7 FT
BASE DISCHARGE	= 260 CFS
BASE FREQUENCY	= 100 YRS
BASE HW ELEVATION	= 768.02 FT
OVERTOPPING DISCHARGE	= 300+ CFS
OVERTOPPING FREQUENCY	= >500+ YRS
OVERTOPPING ELEVATION	= 774.3 FT

# -L- & -LREV-



DITCH LEGEND

LEFT DITCH	---
RIGHT DITCH	---

NOTE:  
SEE SHEETS 9 & 10 FOR -L- & -LREV- PLAN  
SEE SHEET 17 & 27 FOR CULVERT HYDRAULIC DATA

24 MAY 2016 2:55:33 PM P:\proj\U2524D\_RDY\_PSH\_18.dgn