

5/14/19

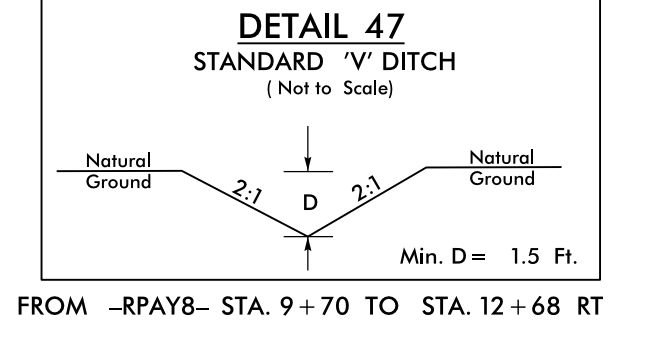
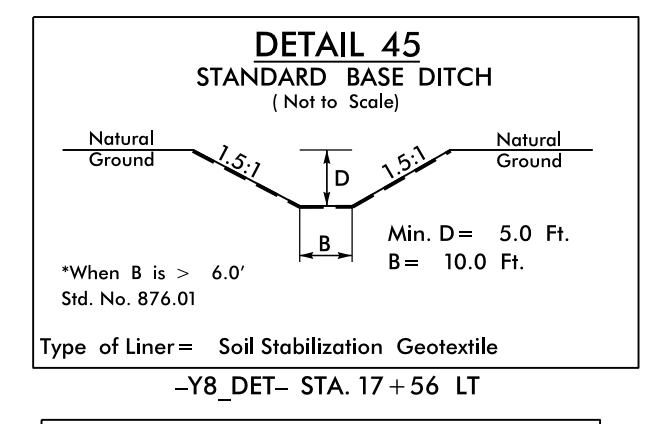
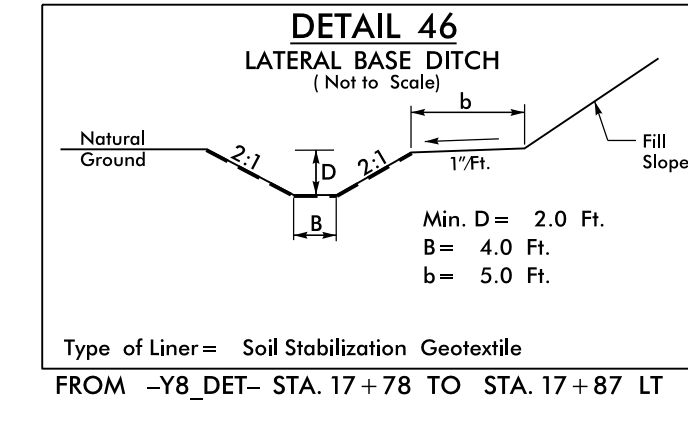
-Y8_DET_SHIFT-

SEE SHEET 2B-6 THRU 2B-7 FOR -Y8_DET_SHIFT- PROFILE.

SEE SHEET 2A-10 FOR TYPICAL SECTION & PAVEMENT DESIGN.

SEE SHEET TMP-18 FOR PHASING OVERVIEW AND TMP-19 FOR SECTION VIEW.

SEE SHEET 2B-4 FOR -Y8_DET- DESIGN.



HNTB
HNTB NORTH CAROLINA, P.C.
240 S. W. FORTY ROAD, SUITE 200
RALEIGH, NORTH CAROLINA 27608
TEL: 919.875.4400 FAX: 919.875.4401

PLANS PREPARED BY:
PARSONS
RALEIGH, NORTH CAROLINA, (919) 854-1345
NC LICENSE NO. F-0246
FOR NORTH CAROLINA DEPT. OF TRANSPORTATION

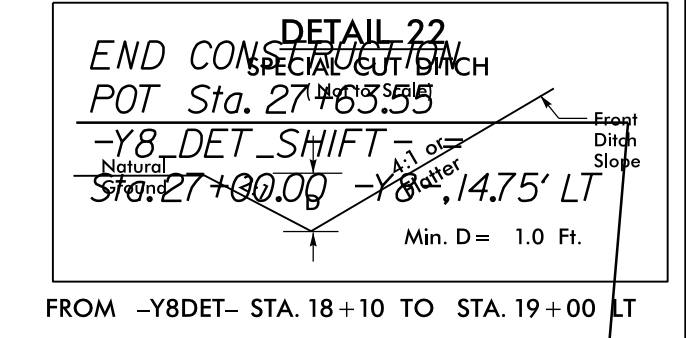
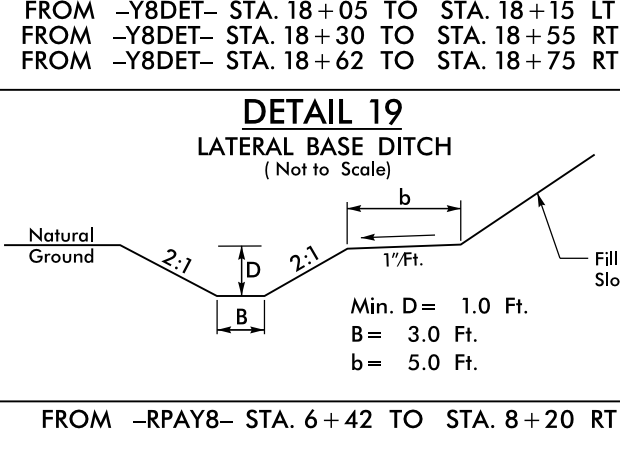
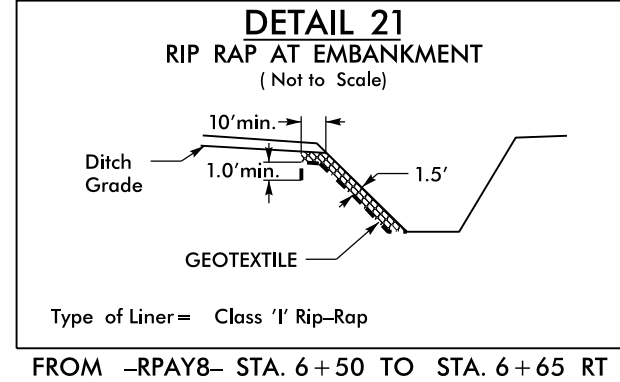
PROJECT REFERENCE NO. U-2524D
SHEET NO. 2B-5
RW SHEET NO.
ROADWAY DESIGN ENGINEER
HYDRAULICS ENGINEER

Professional Engineer Seal for Thomas A. Boyer, License No. 17874, dated 6/29/2016.

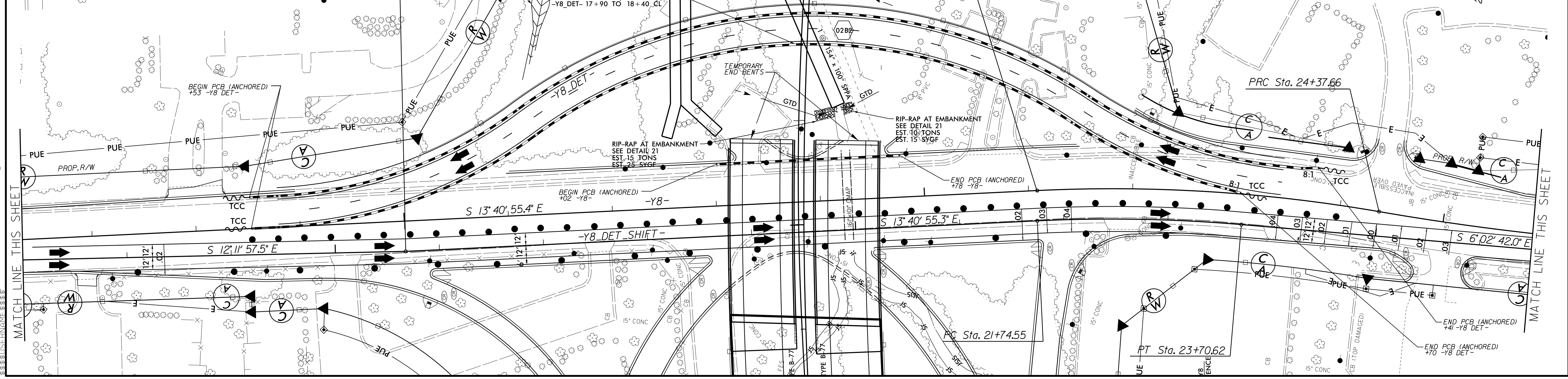
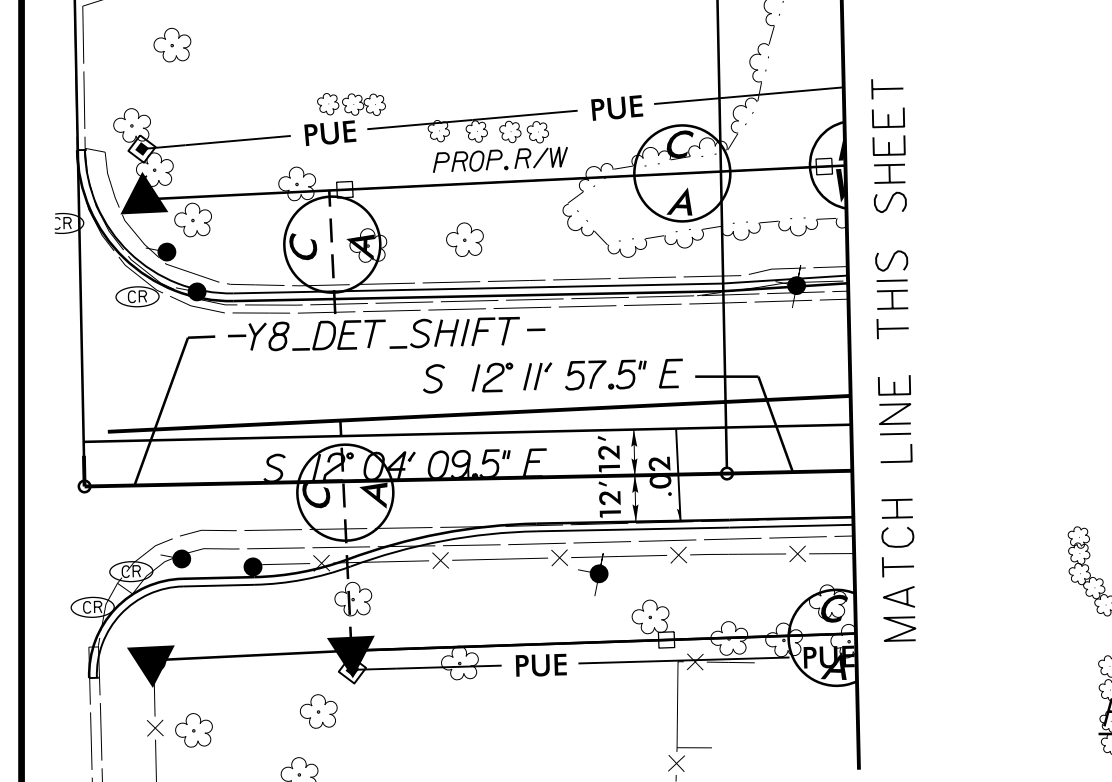
DOCUMENT NOT CONSIDERED FINAL UNLESS ALL SIGNATURES COMPLETED

PROJECT REFERENCE NO. U-2524D	SHEET NO. 2B-5
RW SHEET NO.	
ROADWAY DESIGN ENGINEER	HYDRAULICS ENGINEER

-Y8_DET_SHIFT-
PI Sta. 22+72.73
 $\Delta = 7' 38" 13.2" (RT)$
 $D = 3' 53" 42.1"$
 $L = 196.07'$
 $T = 98.18'$
 $R = 1,471.00'$
SE = USE FINAL DESIGN
SE AND RUNOFF



BEGIN CONSTRUCTION
POT Sta. 10+00.00 -Y8_DET_SHIFT- =
Sta. 10+00.00 -Y8-, 13.93' LT



22 JUN-2016 16:49
 J:\U-2524D\U-2524D_RDY_PSH_02B-5.dgn
 \$\$\$\$\$\$
 \$\$\$\$\$\$