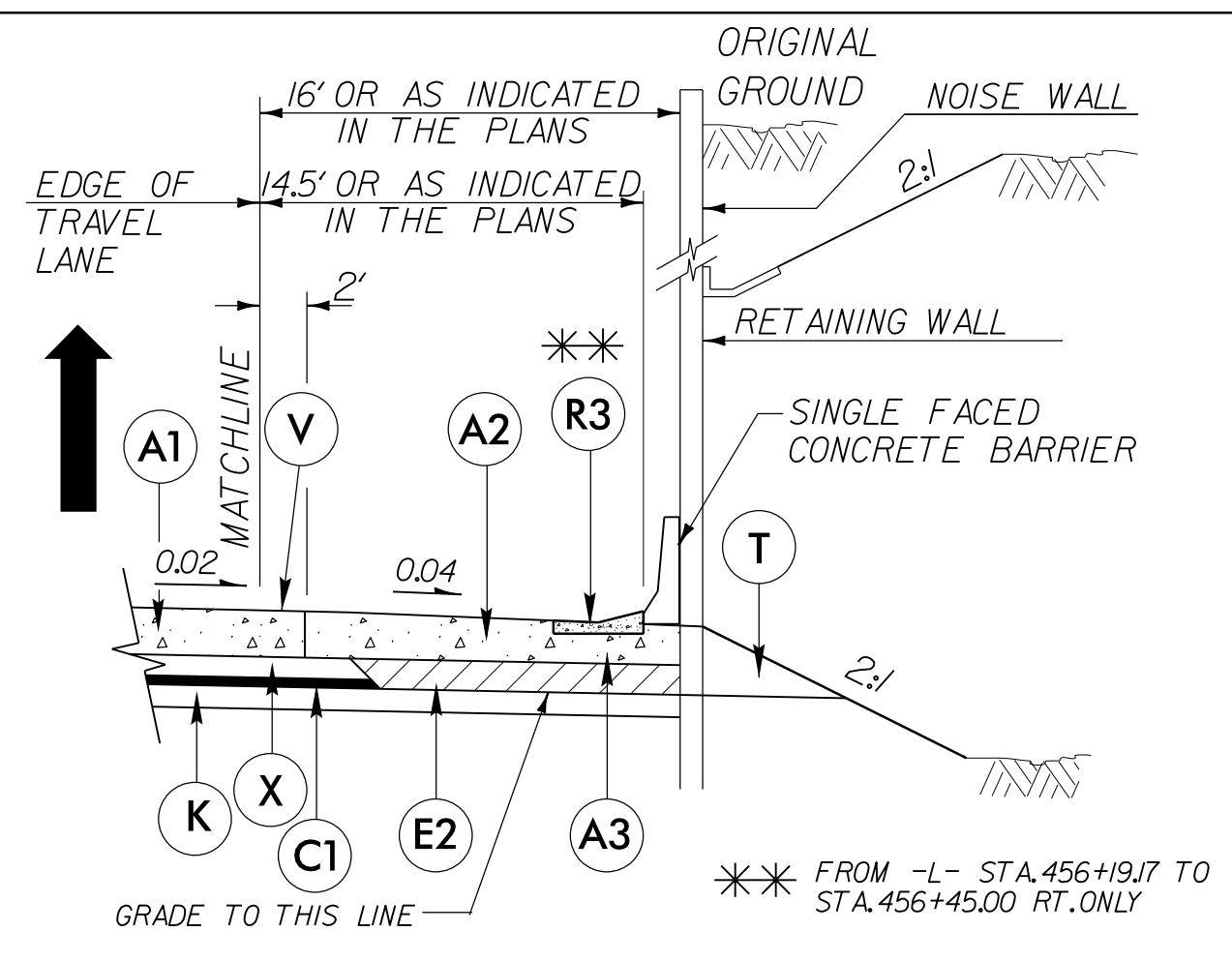


6/2/2016

PLANS PREPARED BY :
PARSONS
 RALEIGH, NORTH CAROLINA, (919) 854-1345
 NC LICENSE NO. F-0246
 FOR NORTH CAROLINA DEPT. OF TRANSPORTATION

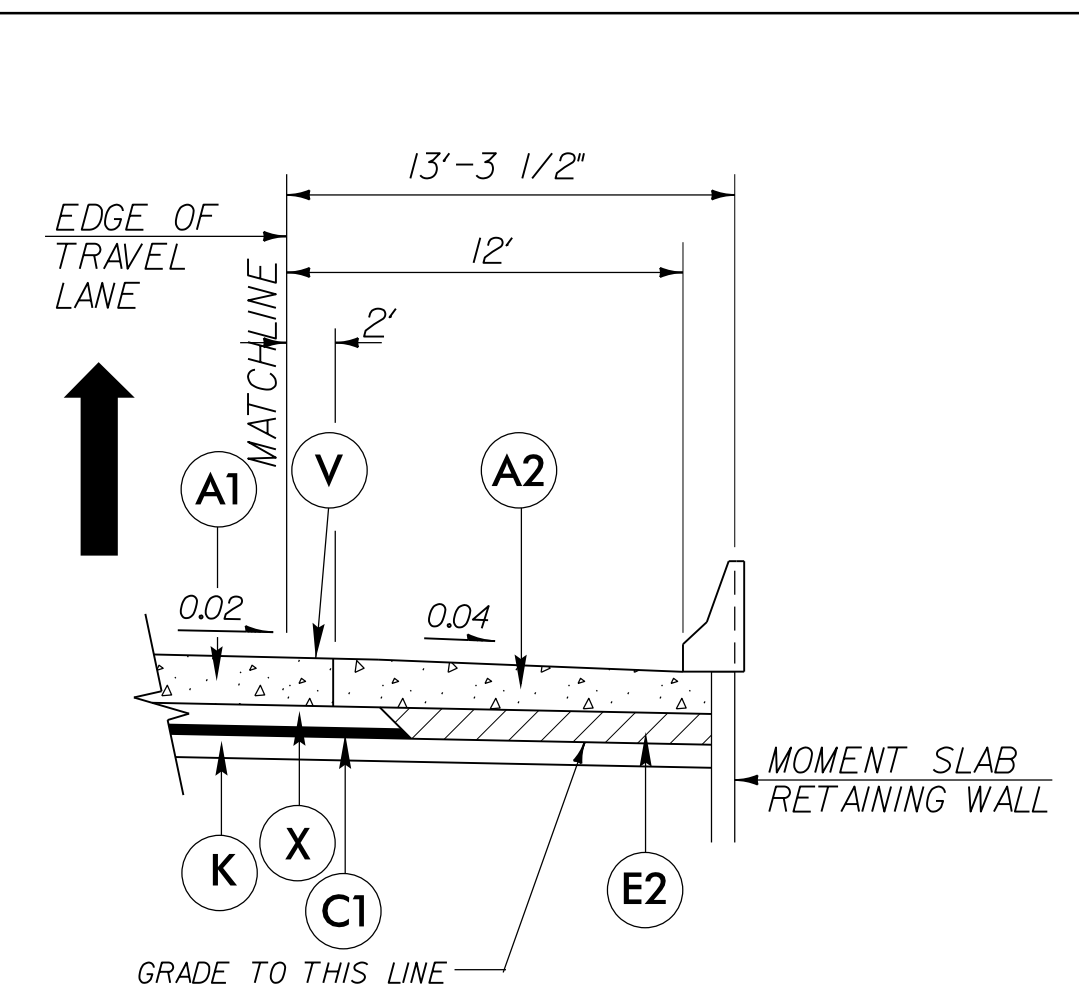
PROJECT REFERENCE NO. U-2524D	SHEET NO. 2A-3
ROADWAY DESIGN ENGINEER	PAVEMENT DESIGN ENGINEER

DOCUMENT NOT CONSIDERED FINAL UNLESS ALL SIGNATURES COMPLETED



TYPICAL SECTION NO. 1A

USE T.S. NO. 1A IN CONJUNCTION WITH TYPICAL SECTION NO. 1



TYPICAL SECTION NO. 1B

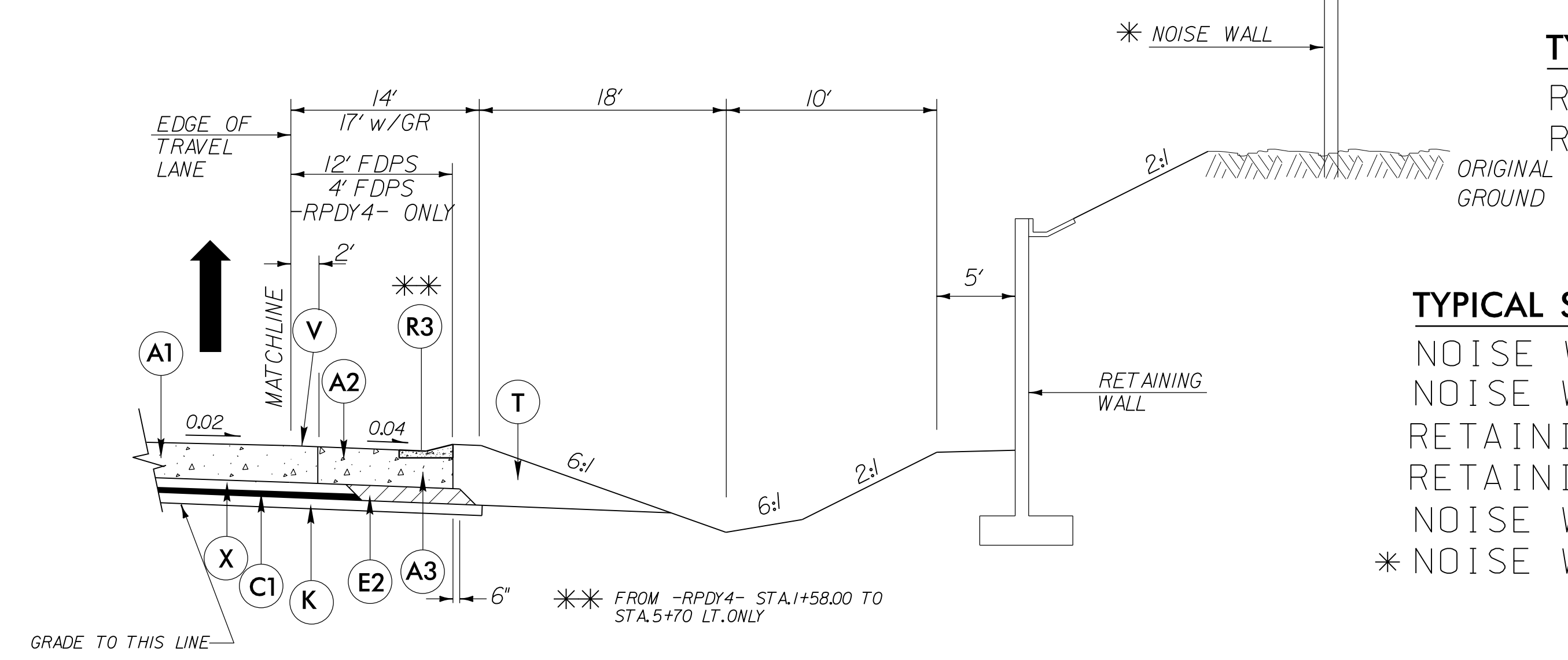
USE T.S. NO. 1B IN CONJUNCTION WITH TYPICAL SECTION NO. 1

TYPICAL SECTION NO. 1A

- NOISE WALL 1 FROM -RPAY4- STA. 0+00.00 TO STA. 3+92.17 RT.
- NOISE WALL 1 FROM -L- STA. 426+20.73 TO STA. 426+73.23 LT.
- NOISE WALL 3 FROM -L- STA. 434+58.03 TO STA. 442+38.03 LT.
- NOISE WALL 6 FROM -L- STA. 452+79.17 TO STA. 481+63.22 LT.
- RETAINING WALL 14 FROM -L- STA. 451+69.01 TO STA. 452+72.28 LT.
- RETAINING WALL 15 FROM -L- STA. 452+13.46 TO STA. 453+00.00 RT.
- RETAINING WALL 11 FROM -L- STA. 453+00.00 TO STA. 455+20.00 RT.
- NOISE WALL 7 FROM -L- STA. 456+19.17 TO STA. 469+28.29 RT.
- NOISE WALL 6 FROM -RPBY8- STA. 0+00.00 TO STA. 5+29.93 LT.
- RETAINING WALL 13 FROM -L- STA. 446+83.38 TO STA. 449+18.38 LT.
- RETAINING WALL 12 FROM -L- STA. 444+96.45 TO STA. 447+30.88 RT.

TYPICAL SECTION NO. 1B

- RETAINING WALL 7-8 FROM -LREV- STA. 491+00.00 TO STA. 494+16.11
- RETAINING WALL 9-10 FROM -LREV- STA. 496+25.84 TO STA. 501+00.00 LT.

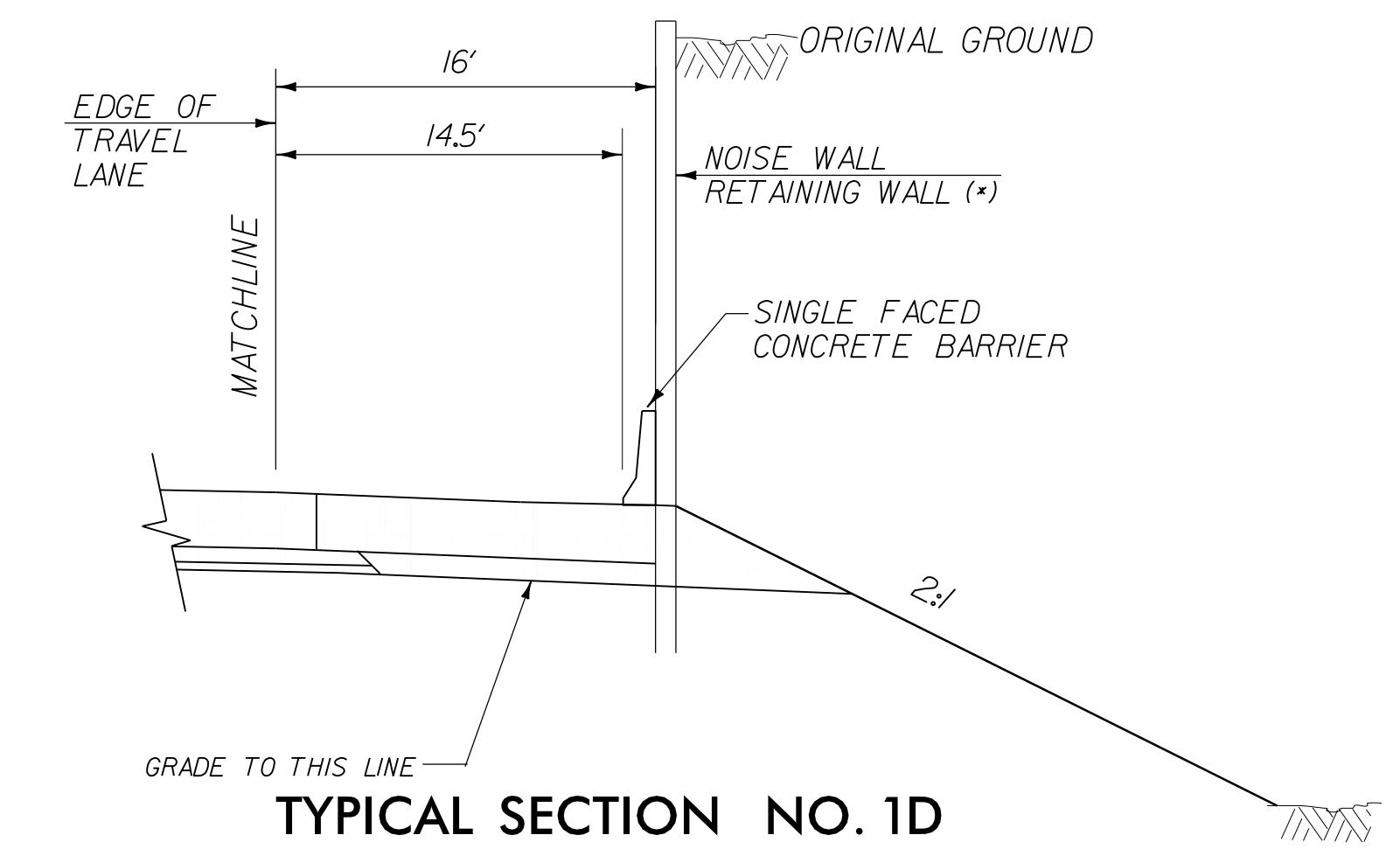


TYPICAL SECTION NO. 1C

USE T.S. NO. 1C IN CONJUNCTION WITH TYPICAL SECTION NO. 1 & 16

TYPICAL SECTION NO. 1C

- NOISE WALL 2 FROM -RPDY4- STA. 0+00.00 TO STA. 8+84.33 LT.
- NOISE WALL 2 FROM -L- STA. 426+20.73 TO STA. 434+06.08 RT.
- RETAINING WALL 4 FROM -L- STA. 425+00.00 TO STA. 442+00.00 RT.
- RETAINING WALL 5 FROM -L- STA. 448+50.00 TO STA. 451+50.00 RT.
- NOISE WALL 7 & RETAINING WALL 6 FROM -L- STA. 471+00.00 TO STA. 480+00.00 RT.
- * NOISE WALL 2 ONLY FROM -RPDY4- STA. 1+21.26 TO STA. 8+84.33 LT.



TYPICAL SECTION NO. 1D

USE T.S. NO. 1D IN CONJUNCTION WITH TYPICAL SECTION NO. 10

TYPICAL SECTION NO. 1D

- NOISE WALL 8 FROM -RPAY8- STA. 0+00.00 TO STA. 9+75.59 RT.
- NOISE WALL 8 FROM -L- STA. 509+23.96 TO STA. 514+14.10 LT.
- NOISE WALL 9 FROM -RPDY8- STA. 3+33.84 TO STA. 11+03.82 LT.
- NOISE WALL 9 FROM -L- STA. 552+92.84 (U-2525C) TO STA. 548+12.55 LT. (U-2525C), (U-2524D -L- STA. 520+41.66 TO STA. 525+21.65 RT.)

NOTE: PAVEMENT STRUCTURE & SF BARRIER TO BE CONSTRUCTED UNDER U-2525C. (NOISE WALLS & GRADING ONLY UNDER U-2524D)

PAVEMENT SCHEDULE	
A1	10.5" P.C.C. JOINTED W/ DOWELS
A2	10.5" P.C.C. JOINTED W/O DOWELS
A3	VAR. DEPTH P.C.C. JOINTED W/O DOWELS
C1	1.25" A.C.S.C. TYPE SF9.5A
E2	4.25" A.C.B.C. TYPE B25.0B
K	SUBGRADE STABILIZATION
R3	4' EXPRESSWAY GUTTER
T	EARTH MATERIAL
V	MILLED RUMBLE STRIPS
X	3" PAD, TYPE P-57

10-JUL-2016 13:24 \\hwy\proj\U2524D_RDY_TYP_02A-3.dgn
 \$\$\$\$USERNAME\$\$\$\$