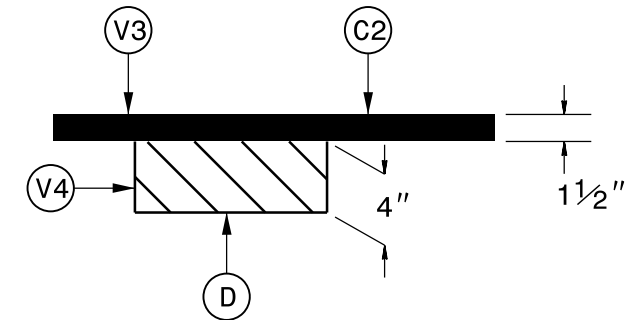


TYPICAL SECTION NO. 5

TO BE USED ON MAPS 3, 7, 12

- MAP 3: STA. 37+31 TO STA. 38+94
- MAP 7: STA. 15+22 TO STA. 15+89 RT
 STA. 15+89 TO STA. 16+75
 STA. 16+75 TO STA. 17+17 RT
 STA. 56+20 TO STA. 57+36
 STA. 81+54 TO STA. 84+71 RT
 STA. 124+96 TO STA. 130+86 LT
- MAP 12: STA. 10+20 TO STA. 13+33 LT

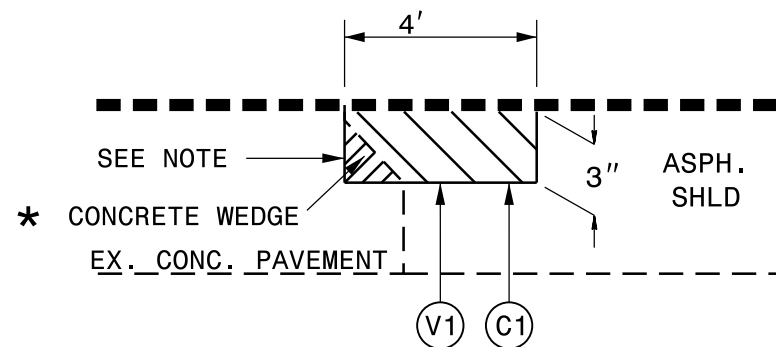
4" MILLING FOR PATCHING DETAIL 2



TO BE USED IN RUTTED AREAS AS DIRECTED BY THE ENGINEER IN CONJUNCTION WITH:

- MAP 7: STA. 175+80 TO STA. 176+80

3" MILLING FOR PATCHING DETAIL 1



NOTE: CONTRACTOR SHALL SAW CUT 3" DEPTH PRIOR TO MILLING OPERATION. SAW CUT IS INCIDENTAL TO MILLING OPERATION

* CONCRETE WEDGE SHALL BE REMOVED

TO BE USED IN CONJUNCTION WITH MAPS 1 AND 5

- MAP 1: 3" MILLING = 17427 SYD
 SURFACE COURSE, TYPE S9.5B = 2928 TONS
- MAP 5: 3" MILLING = 17427 SYD
 SURFACE COURSE, TYPE S9.5B = 2928 TONS

PAVEMENT SCHEDULE

C1	PROP. APPROX. 3" ASPHALT CONCRETE SURFACE COURSE, TYPE S9.5B, AT AN AVG. RATE OF 168 LBS PER SQ. YD. IN EACH OF TWO LAYERS
C2	PROP. APPROX. 1 1/2" ASPHALT CONCRETE SURFACE COURSE, S9.5C AT AN AVG. RATE OF 168 LBS PER SQ. YD.
D	PROP. APPROX. 4" ASPHALT CONCRETE INTERMEDIATE COURSE, I19.0C AT AN AVG RATE OF 456 LBS PER SQ. YD. IN ONE LIFT
F	PROPOSED FOG SEAL TO BE APPLIED TO THE EXISTING ASPHALT SHOULDER
R	EXISTING CONCRETE STRUCTURE
U	EXISTING PAVEMENT
V1	3" MILLING FOR PATCHING
V2	MILLED RUMBLE STRIP
V3	MILLING ASPHALT PAVEMENT 1 1/2" DEPTH
V4	4" MILLING FOR PATCHING
Y	PROPOSED DIAMOND GRINDING