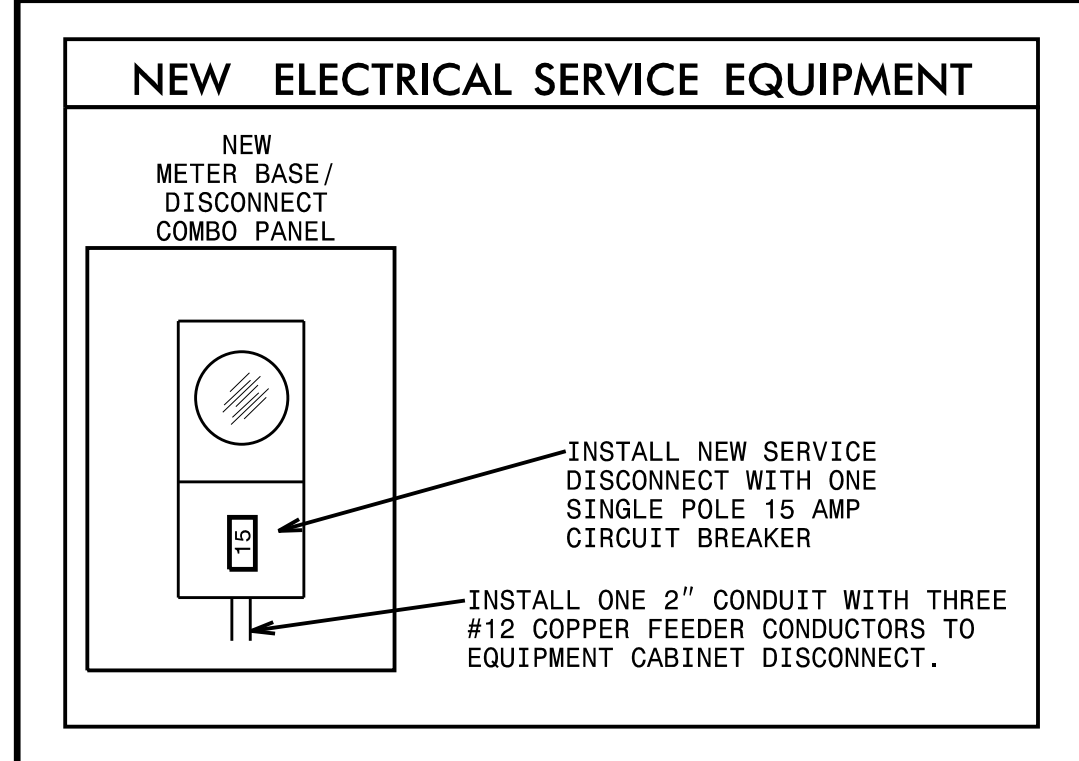
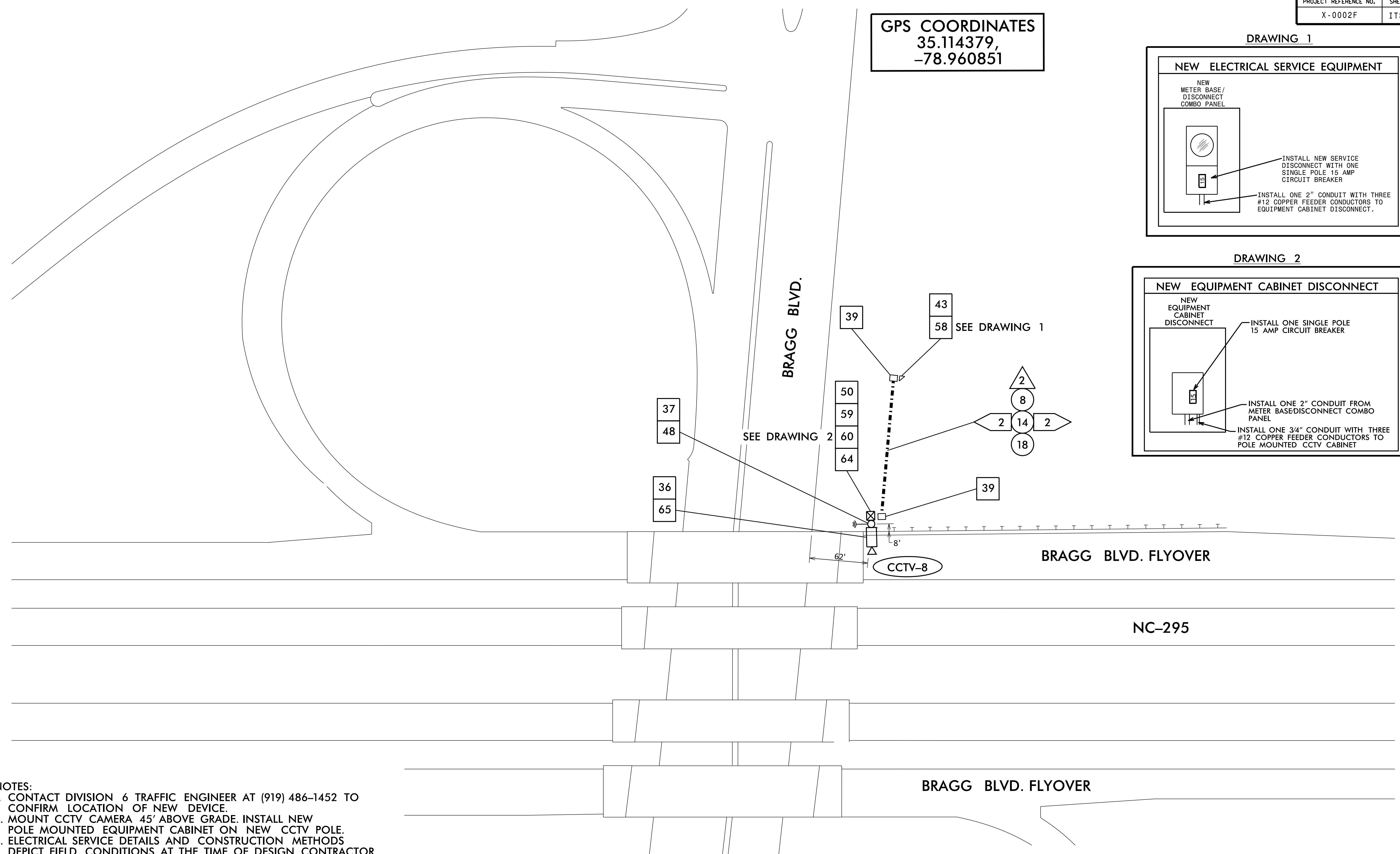
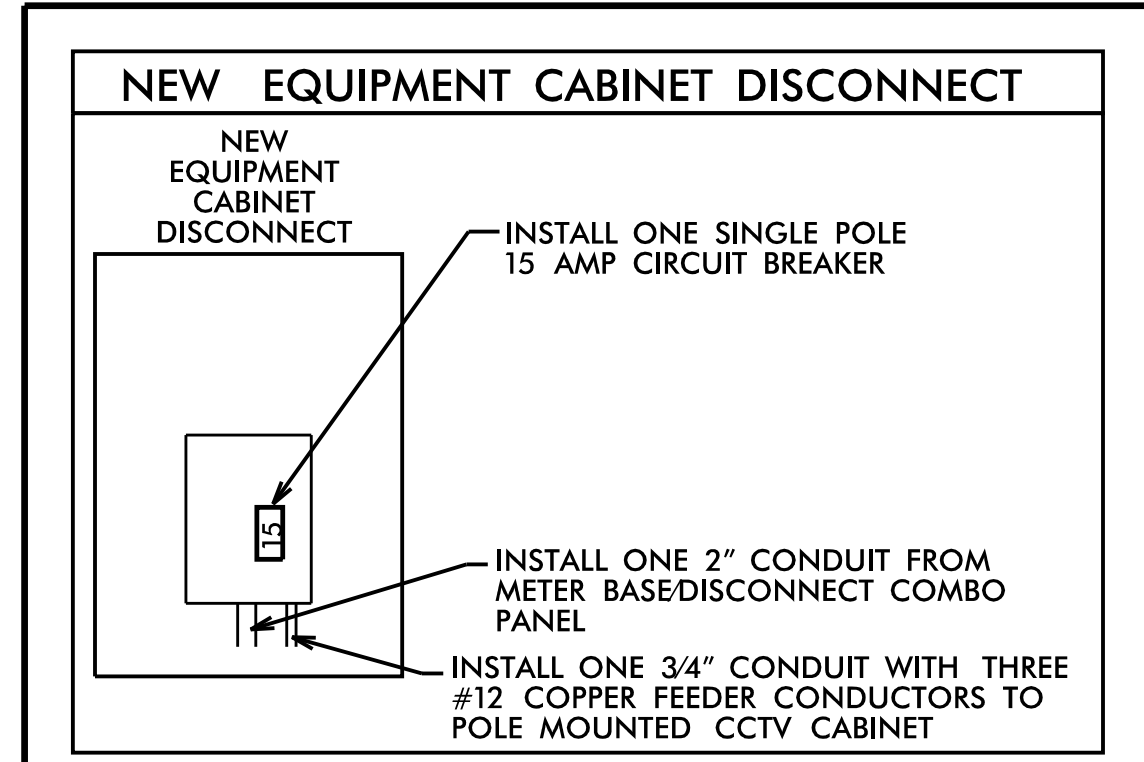


GPS COORDINATES
35.114379,
-78.960851

DRAWING 1



DRAWING 2



- NOTES:**
- CONTACT DIVISION 6 TRAFFIC ENGINEER AT (919) 486-1452 TO CONFIRM LOCATION OF NEW DEVICE.
 - MOUNT CCTV CAMERA 45' ABOVE GRADE. INSTALL NEW POLE MOUNTED EQUIPMENT CABINET ON NEW CCTV POLE.
 - ELECTRICAL SERVICE DETAILS AND CONSTRUCTION METHODS DEPICT FIELD CONDITIONS AT THE TIME OF DESIGN. CONTRACTOR TO VERIFY ACTUAL CONDITIONS AT THE TIME OF CONSTRUCTION AND OBTAIN APPROVAL FROM ENGINEER PRIOR TO MAKING ANY CHANGES.
 - INSTALL NEW GROUNDING SYSTEM AS SHOWN ON SHEET ITS-6 AND AS DESCRIBED IN THE PROJECT SPECIAL PROVISIONS.
 - INSTALL CONDUITS FOR FEEDER CONDUCTORS AND FIBER OPTIC CABLE IN SAME BORE AND TRENCH. USE SEPERATE CONDUITS AND SEPERATE JUNCTION BOXES FOR POWER AND COMMUNICATIONS.
 - MAINTAIN A MINIMUM OF SIX (6) FEET FROM THE EDGE OF PAVEMENT WHEN TRENCHING PARALLEL TO THE ROADWAY UNLESS OTHERWISE NOTED ON THE PLANS.

6/30/2016 12:38:03 PM jerry.gross KARAL_TPTD_ITS_01036317 - INDDOT I-295 ITS\Plans\X-0002F_ITS_psh_26.dgn

Kimley»Horn

NC License #F-0102
P.O. Box 33068
Raleigh, NC 27636
Tel: (919) 677-2000
Fax: (919) 677-2050

Plans Prepared For:
DEPARTMENT OF TRANSPORTATION
Division of Transportation Systems Services

250 N. Greenfield Place, Garner, NC 27529

SCALE: 0 50

NC-295 FAYETTEVILLE OUTER LOOP ITS	
ITS DEVICE INSTALLATION PLAN	
DIVISION 06	CUMBERLAND COUNTY
PLAN DATE: JUNE 2016	REVIEWED BY:
PREPARED BY: J. CROSS	REVIEWED BY: K. SMITH
REVISIONS	INIT. DATE

SEAL

DocuSigned by:
Kevin W. Smith
6/30/2016

SIGNATURE DATE

CADD Filename: