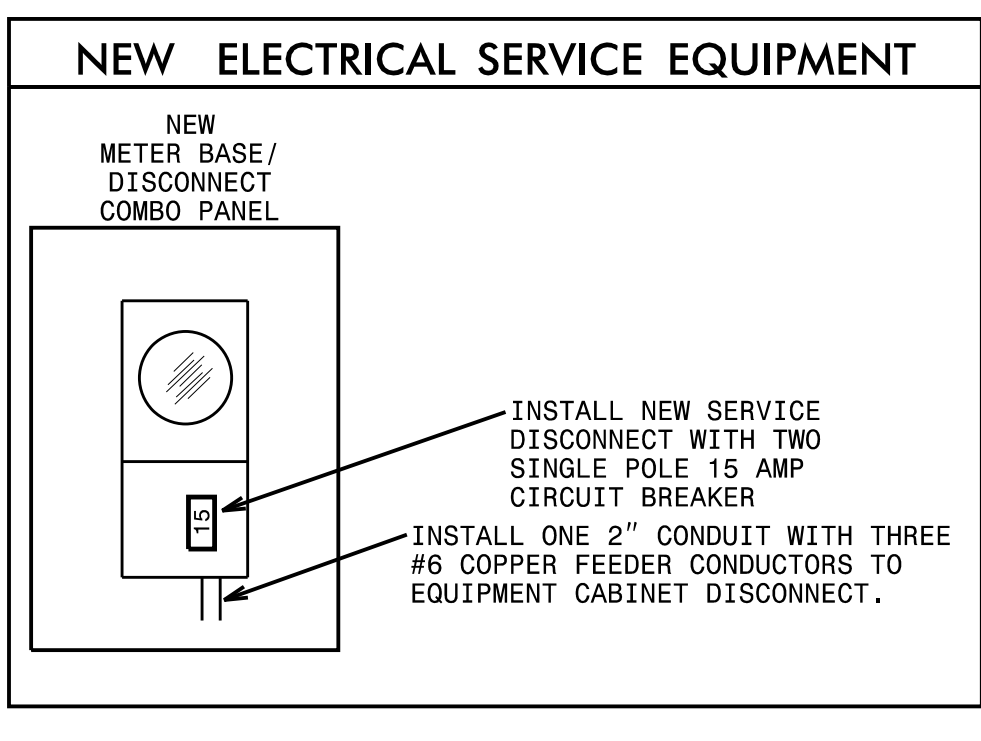
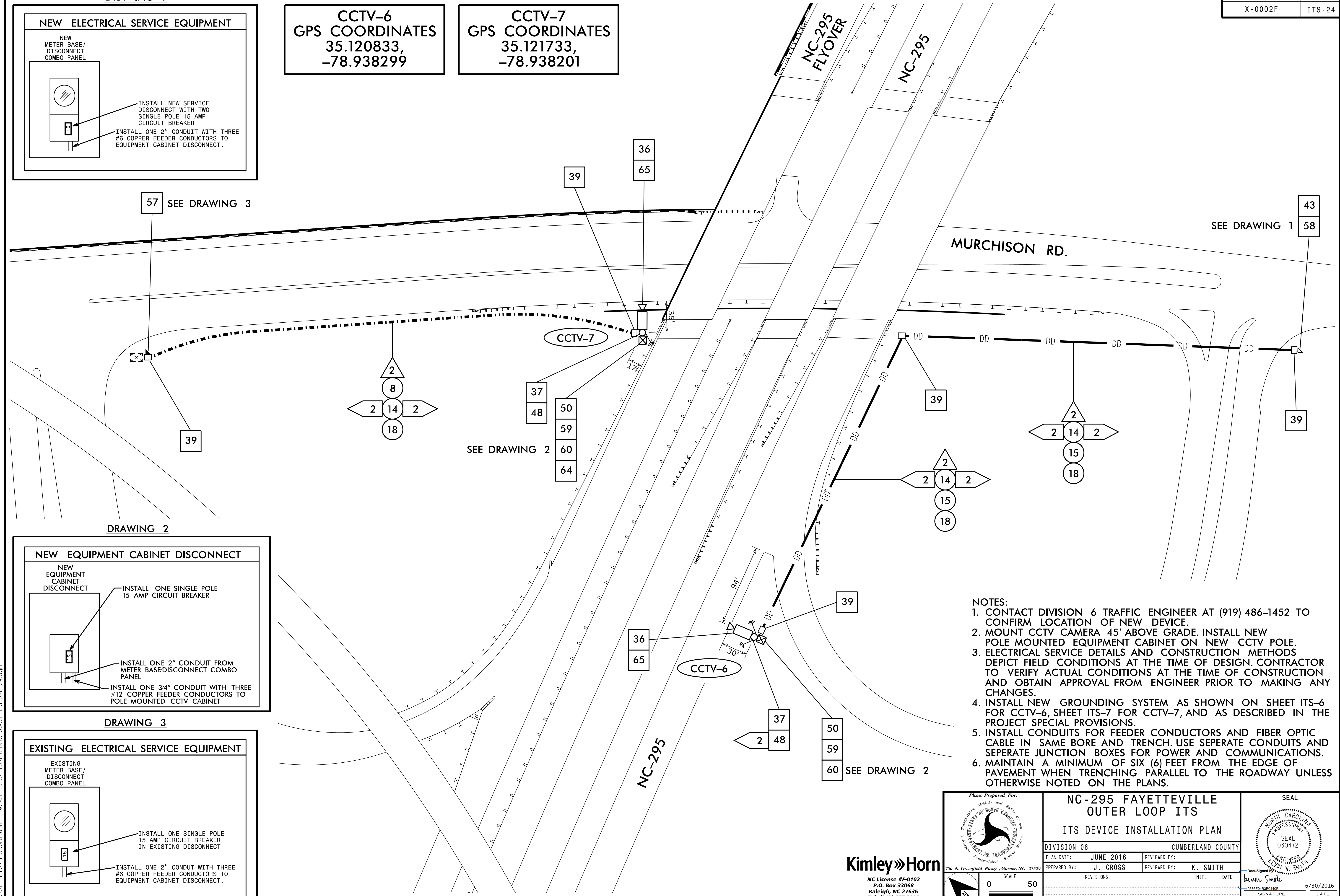


DRAWING 1



**CCTV-6**  
GPS COORDINATES  
35.120833,  
-78.938299

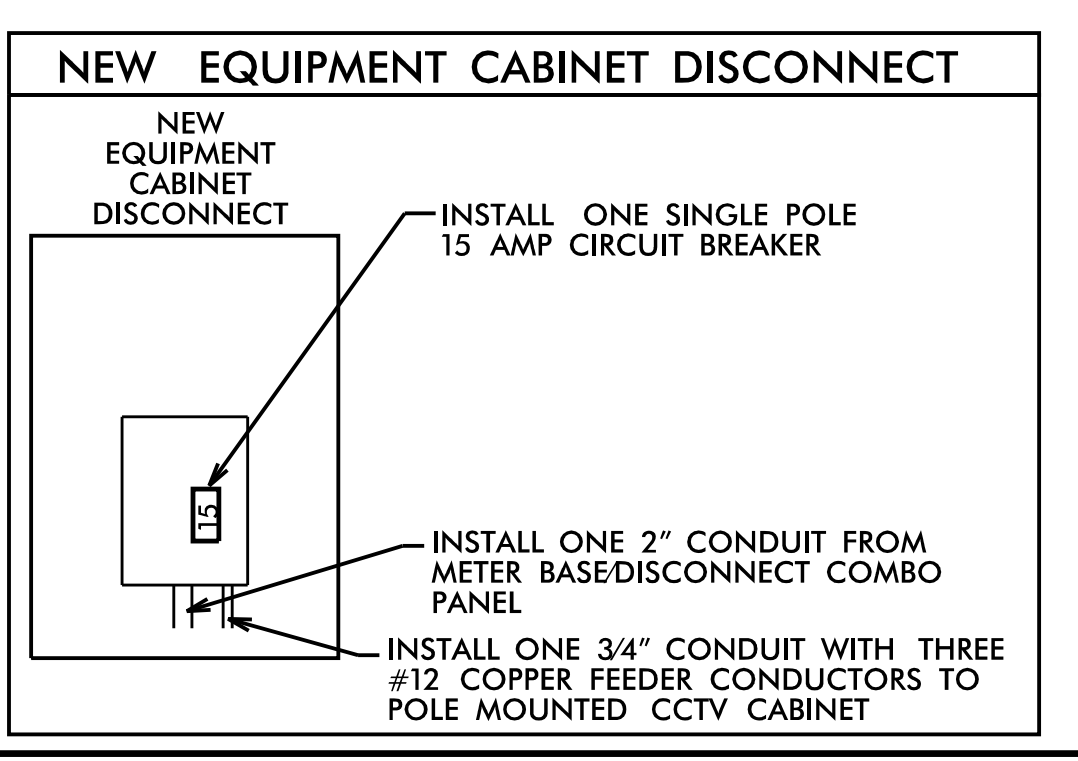
**CCTV-7**  
GPS COORDINATES  
35.121733,  
-78.938201



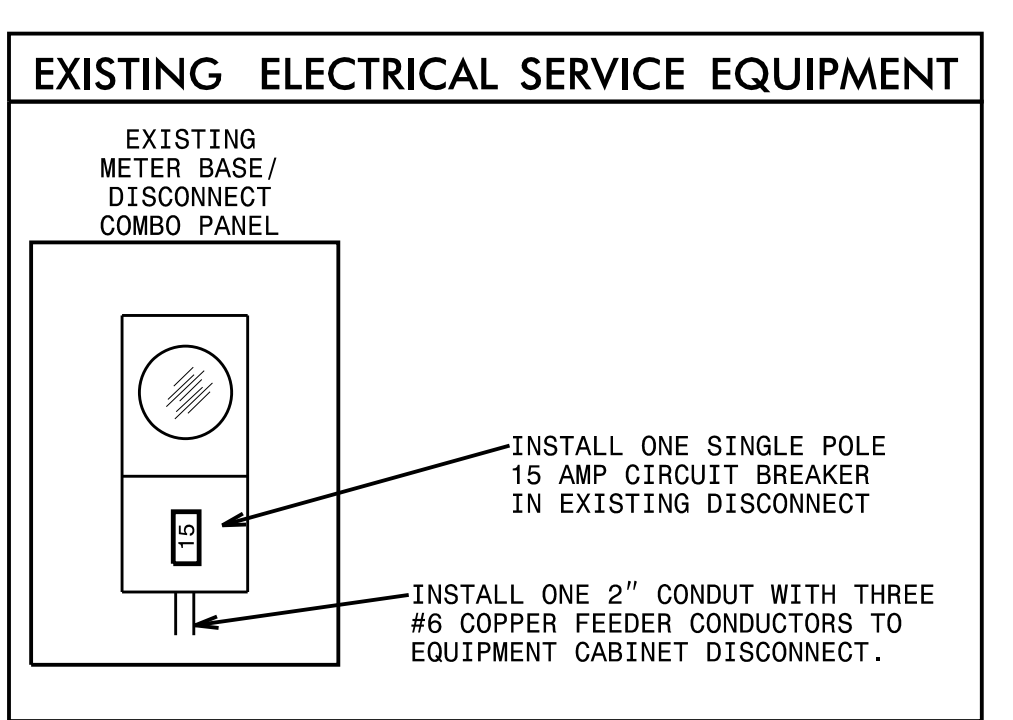
57 SEE DRAWING 3

43  
58  
SEE DRAWING 1

DRAWING 2



DRAWING 3



37  
48  
50  
59  
60  
64  
SEE DRAWING 2

37  
48  
50  
59  
60 SEE DRAWING 2

- NOTES:**
- CONTACT DIVISION 6 TRAFFIC ENGINEER AT (919) 486-1452 TO CONFIRM LOCATION OF NEW DEVICE.
  - MOUNT CCTV CAMERA 45' ABOVE GRADE. INSTALL NEW POLE MOUNTED EQUIPMENT CABINET ON NEW CCTV POLE.
  - ELECTRICAL SERVICE DETAILS AND CONSTRUCTION METHODS DEPICT FIELD CONDITIONS AT THE TIME OF DESIGN. CONTRACTOR TO VERIFY ACTUAL CONDITIONS AT THE TIME OF CONSTRUCTION AND OBTAIN APPROVAL FROM ENGINEER PRIOR TO MAKING ANY CHANGES.
  - INSTALL NEW GROUNDING SYSTEM AS SHOWN ON SHEET ITS-6 FOR CCTV-6, SHEET ITS-7 FOR CCTV-7, AND AS DESCRIBED IN THE PROJECT SPECIAL PROVISIONS.
  - INSTALL CONDUITS FOR FEEDER CONDUCTORS AND FIBER OPTIC CABLE IN SAME BORE AND TRENCH. USE SEPARATE CONDUITS AND SEPARATE JUNCTION BOXES FOR POWER AND COMMUNICATIONS.
  - MAINTAIN A MINIMUM OF SIX (6) FEET FROM THE EDGE OF PAVEMENT WHEN TRENCHING PARALLEL TO THE ROADWAY UNLESS OTHERWISE NOTED ON THE PLANS.

6/30/2016 12:37:56 PM jerry.cross  
K:\ARL\_TPTD\_ITS\01036317 - NCDOT ITS\Plans\X-0002F\_ITS\_psh\_24.dgn

**Kimley»Horn**  
NC License #F-0102  
P.O. Box 33068  
Raleigh, NC 27636  
Tel: (919) 677-2000  
Fax: (919) 677-2050

|                       |  |      |                 |
|-----------------------|--|------|-----------------|
|                       | <b>NC-295 FAYETTEVILLE OUTER LOOP ITS</b><br><b>ITS DEVICE INSTALLATION PLAN</b> |      |                 |
|                       | DIVISION 06 CUMBERLAND COUNTY  |      |                 |
| PLAN DATE: JUNE 2016  | REVIEWED BY:   |      | DATE: 6/30/2016 |
| PREPARED BY: J. CROSS | REVIEWED BY: K. SMITH  |      |                 |
| REVISIONS             | INIT.  | DATE | SIGNATURE       |
| CADD File name:       | SEAL   |      |                 |