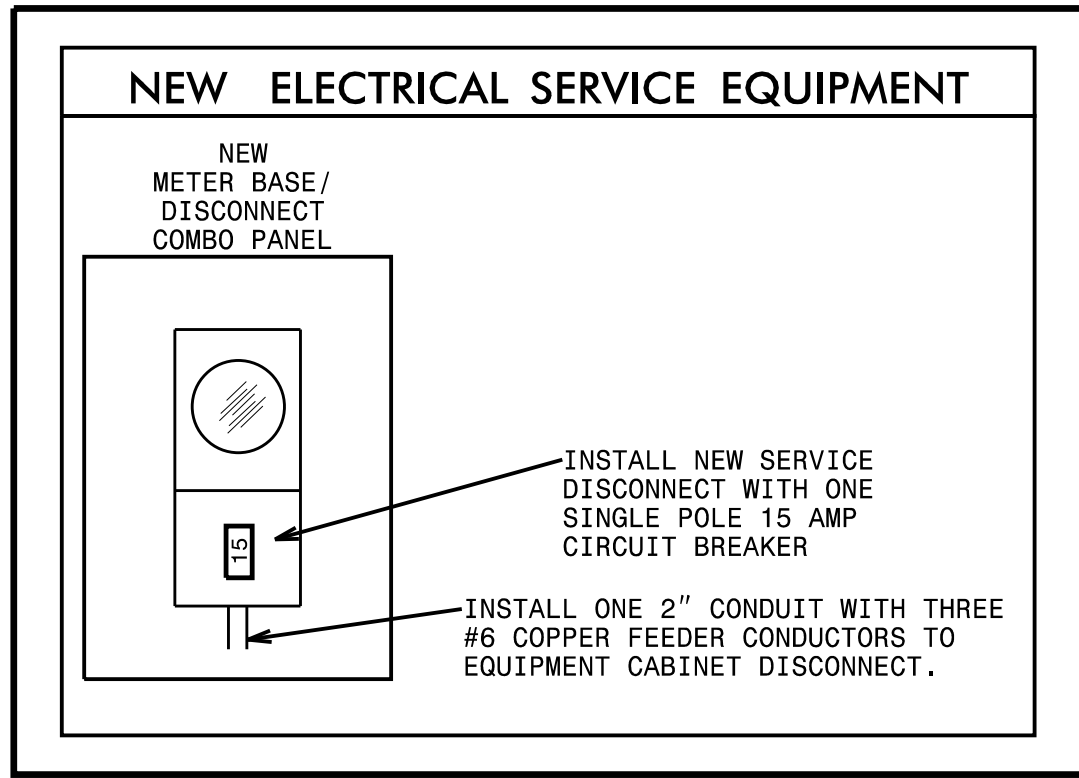
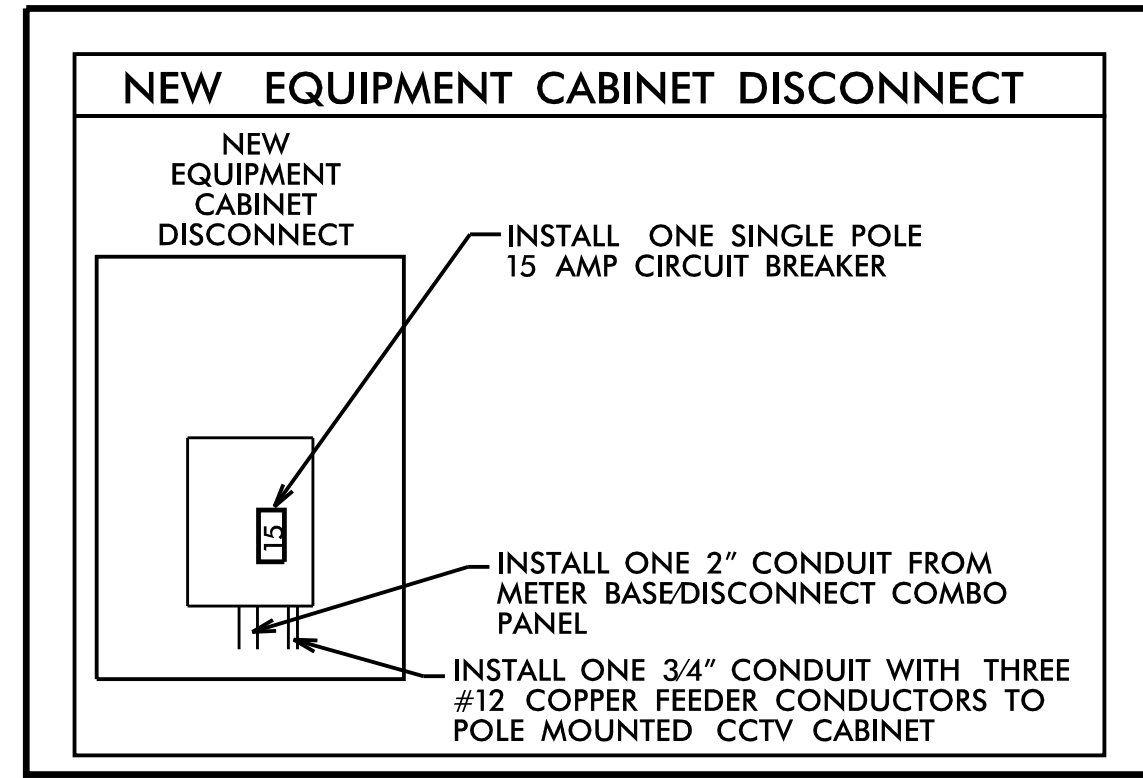


DRAWING 1

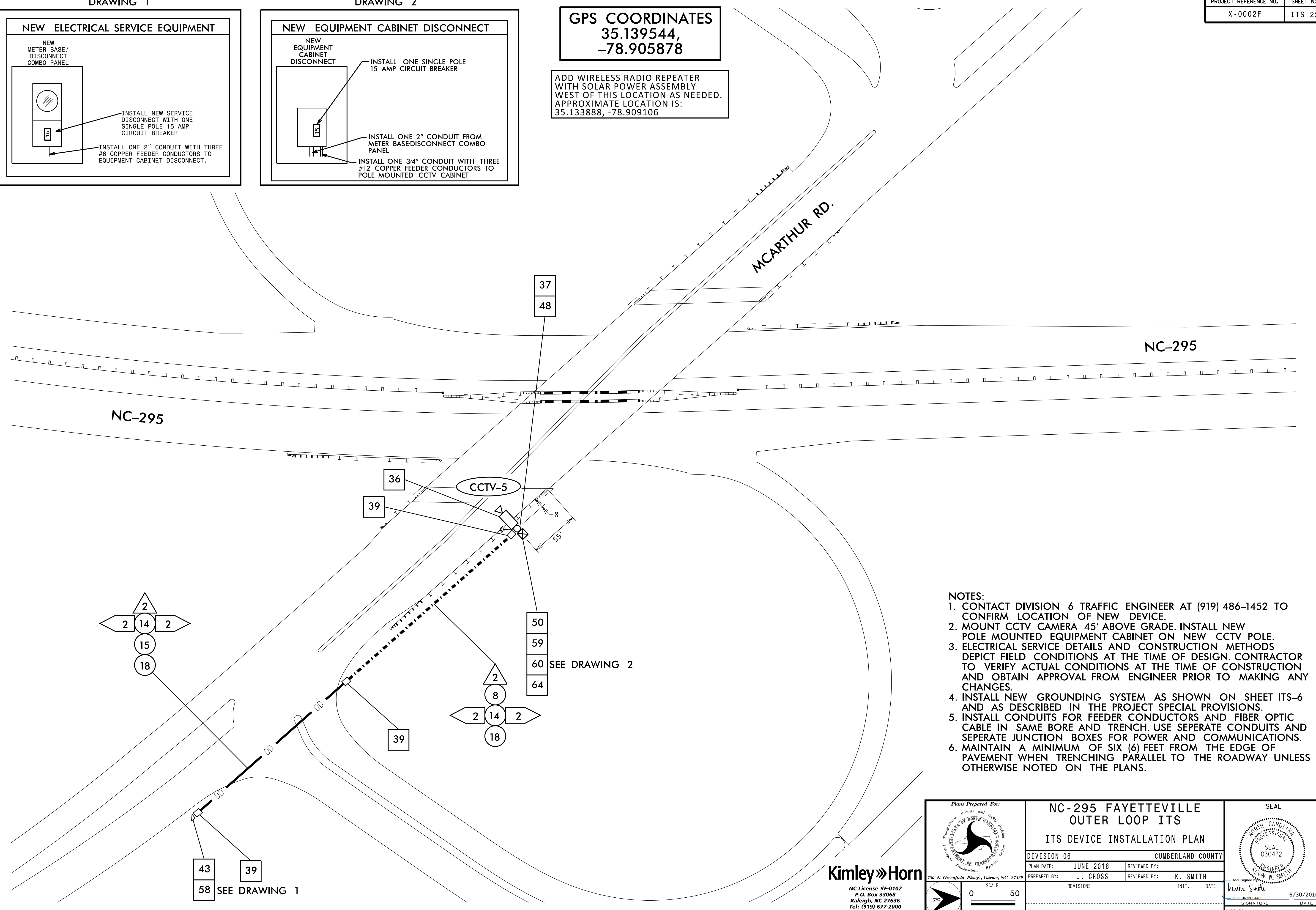


DRAWING 2



GPS COORDINATES
 35.139544,
 -78.905878

ADD WIRELESS RADIO REPEATER WITH SOLAR POWER ASSEMBLY WEST OF THIS LOCATION AS NEEDED. APPROXIMATE LOCATION IS: 35.133888, -78.909106



- NOTES:**
1. CONTACT DIVISION 6 TRAFFIC ENGINEER AT (919) 486-1452 TO CONFIRM LOCATION OF NEW DEVICE.
 2. MOUNT CCTV CAMERA 45' ABOVE GRADE. INSTALL NEW POLE MOUNTED EQUIPMENT CABINET ON NEW CCTV POLE.
 3. ELECTRICAL SERVICE DETAILS AND CONSTRUCTION METHODS DEPICT FIELD CONDITIONS AT THE TIME OF DESIGN. CONTRACTOR TO VERIFY ACTUAL CONDITIONS AT THE TIME OF CONSTRUCTION AND OBTAIN APPROVAL FROM ENGINEER PRIOR TO MAKING ANY CHANGES.
 4. INSTALL NEW GROUNDING SYSTEM AS SHOWN ON SHEET ITS-6 AND AS DESCRIBED IN THE PROJECT SPECIAL PROVISIONS.
 5. INSTALL CONDUITS FOR FEEDER CONDUCTORS AND FIBER OPTIC CABLE IN SAME BORE AND TRENCH. USE SEPARATE CONDUITS AND SEPARATE JUNCTION BOXES FOR POWER AND COMMUNICATIONS.
 6. MAINTAIN A MINIMUM OF SIX (6) FEET FROM THE EDGE OF PAVEMENT WHEN TRENCHING PARALLEL TO THE ROADWAY UNLESS OTHERWISE NOTED ON THE PLANS.

6/30/2016 12:37:450 PMjerry.cross KARAL_TPTD_ITS_01036317 - NCDOT I-295 ITS\Plans X-0002F_ITS_psh_22.dgn

Kimley»Horn
 NC License #F-0102
 P.O. Box 33068
 Raleigh, NC 27636
 Tel: (919) 677-2000
 Fax: (919) 677-2050

	NC-295 FAYETTEVILLE OUTER LOOP ITS ITS DEVICE INSTALLATION PLAN		
	DIVISION 06 CUMBERLAND COUNTY		
PLAN DATE: JUNE 2016	REVIEWED BY:		KEVIN W. SMITH ENGINEER SEAL 030472
PREPARED BY: J. CROSS	REVIEWED BY: K. SMITH		
REVISIONS	INIT.	DATE	Kevin Smith 6/30/2016 SIGNATURE DATE CADD Filename:
SCALE 0 50			