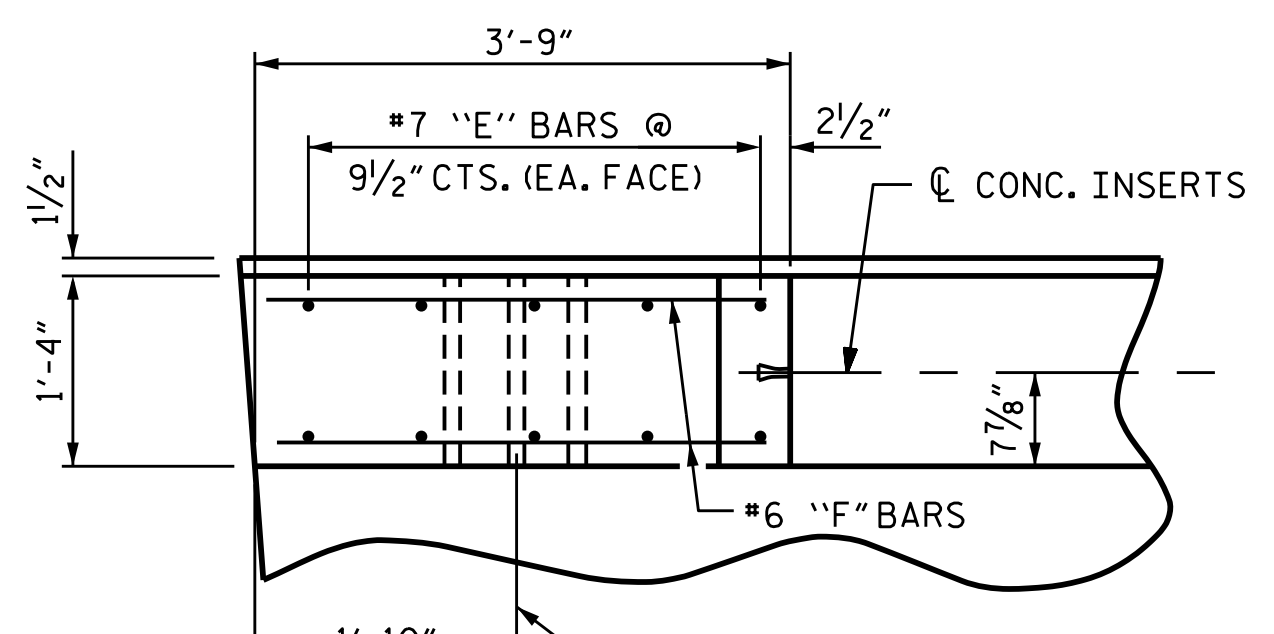
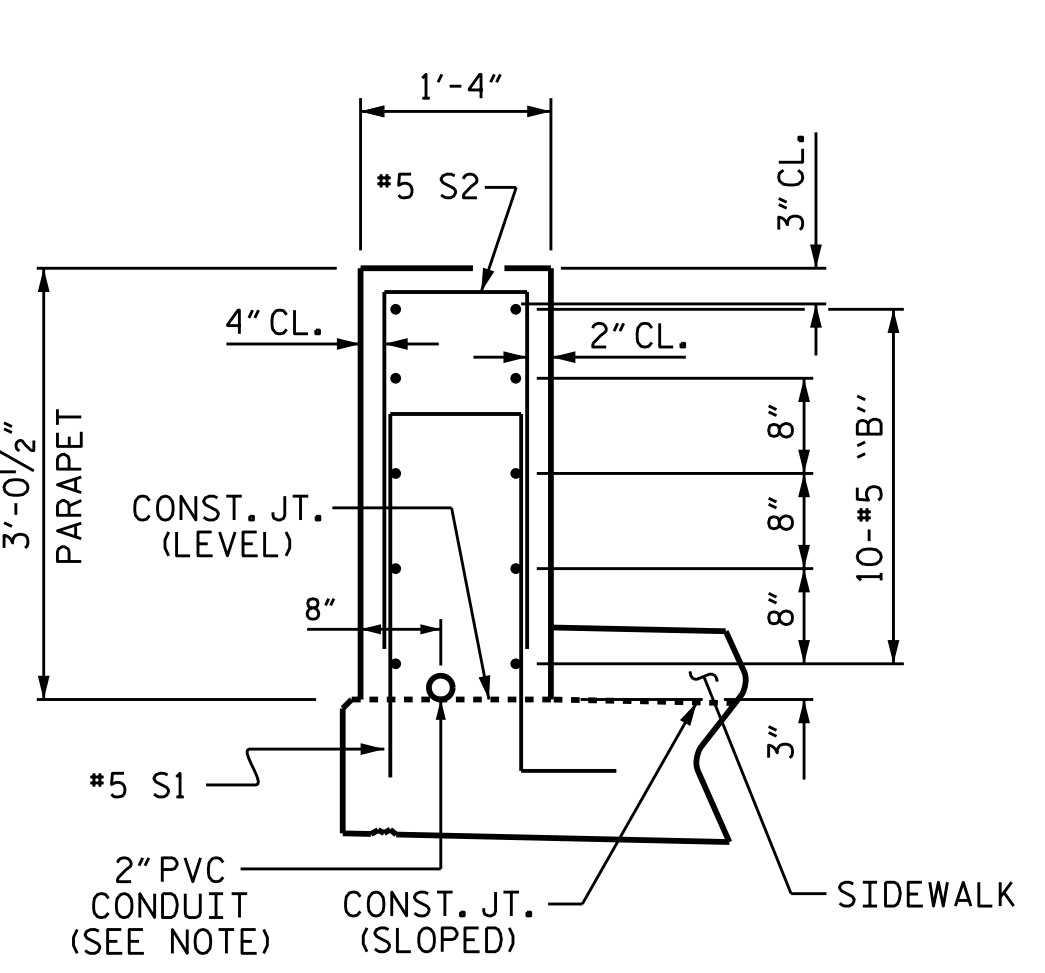


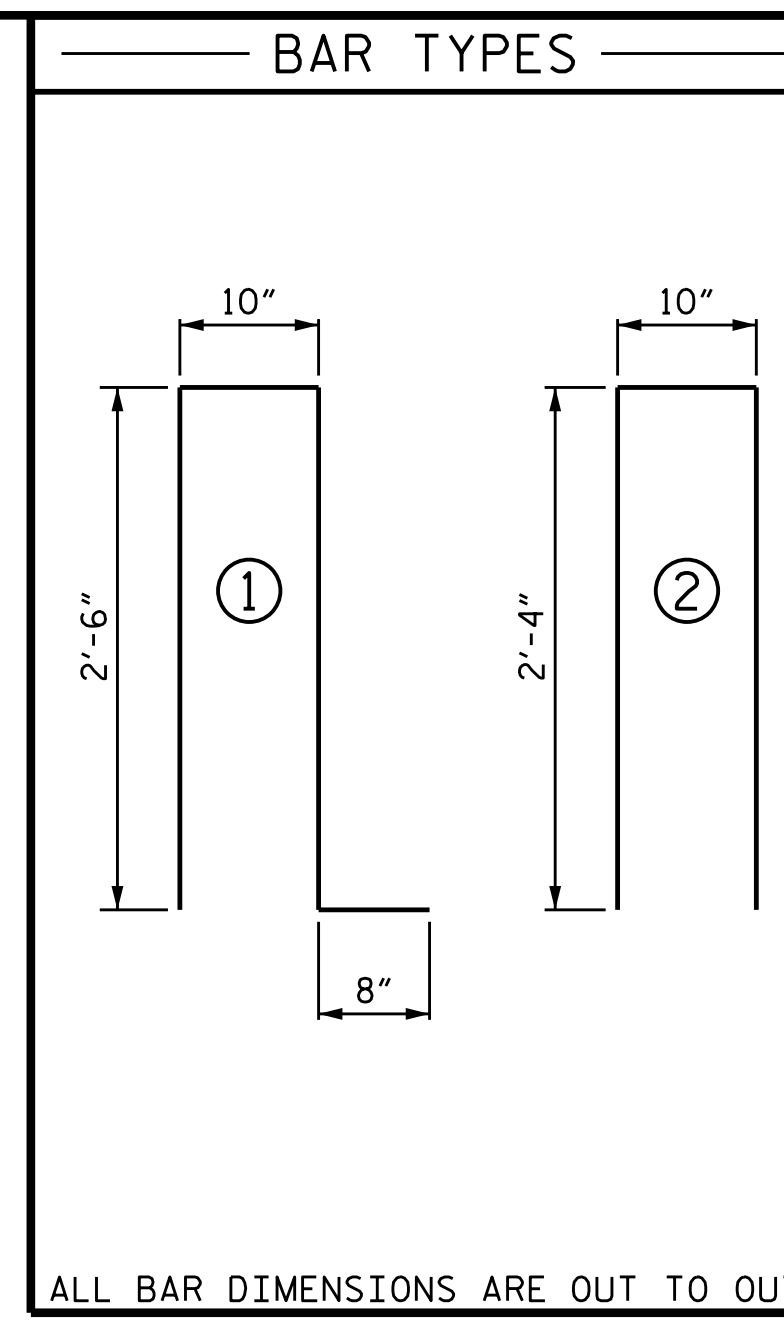
PLAN OF PARAPET



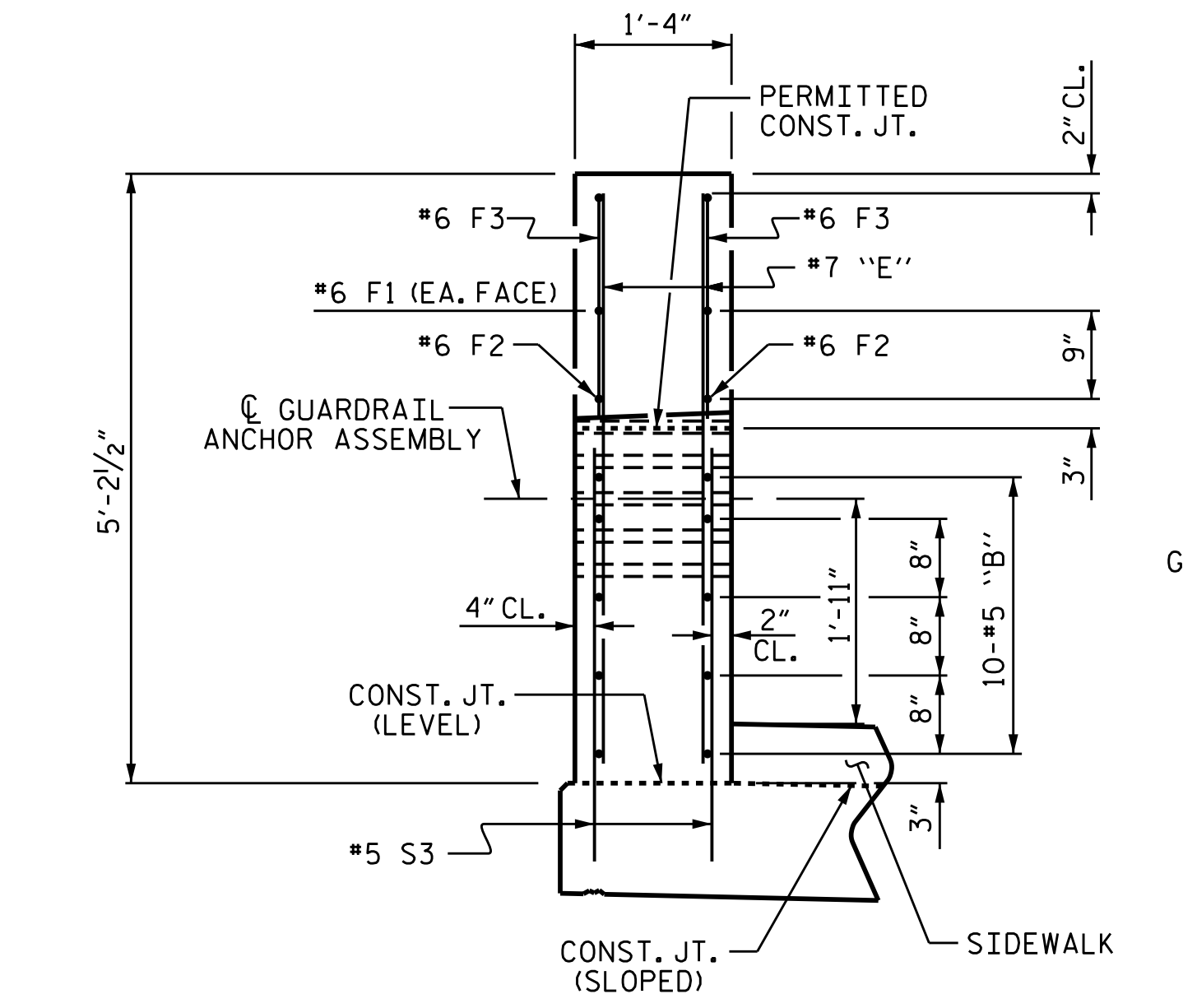
PLAN OF END POST



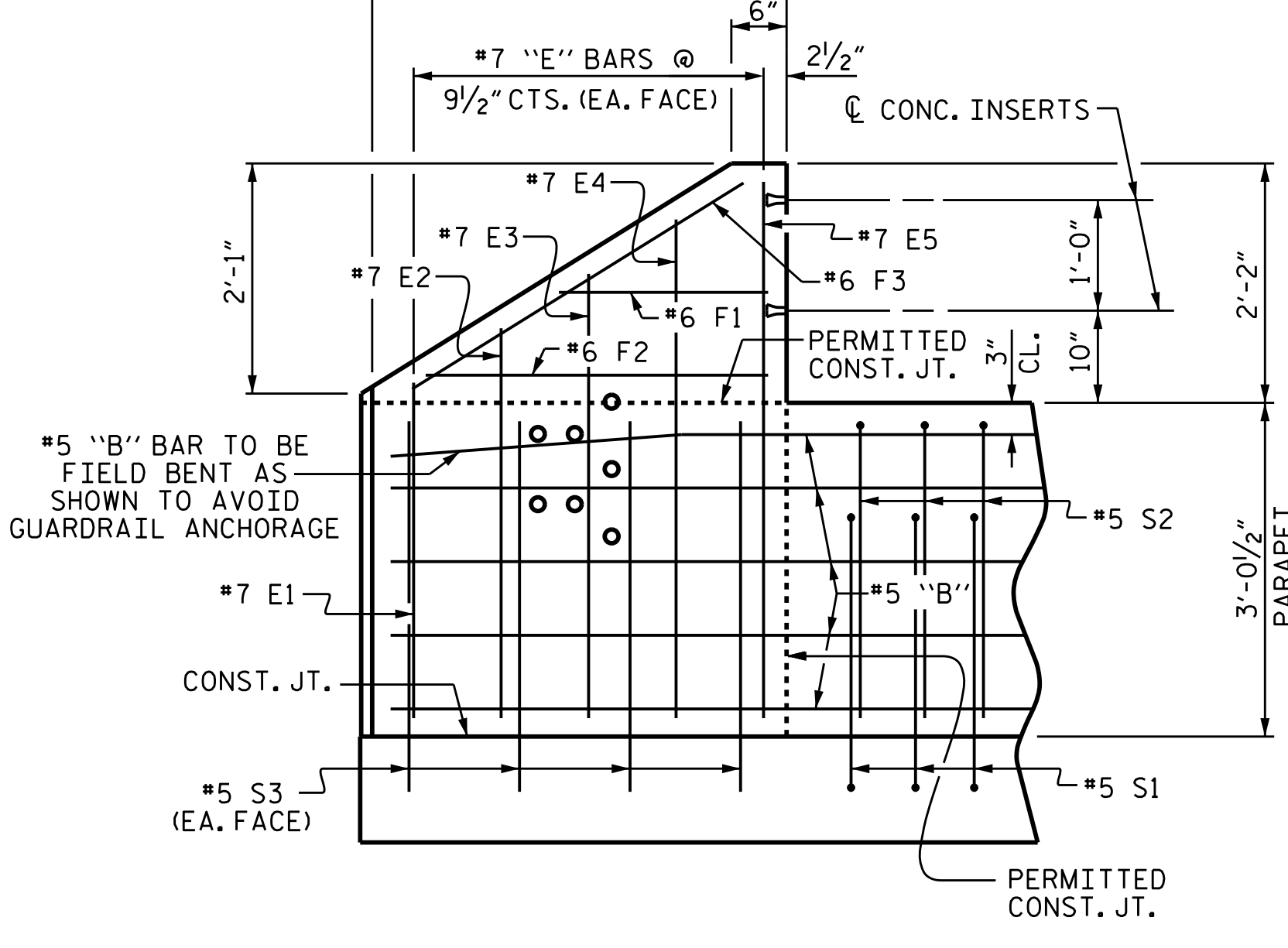
SECTION THROUGH PARAPET



BILL OF MATERIAL-STAGE I					
PARAPET AND 2 END POSTS					
BAR	NO.	SIZE	TYPE	LENGTH	WEIGHT
* B3	30	#5	STR	24'-7"	769
* B4	20	#5	STR	25'-7"	534
* E1	4	#7	STR	3'-0"	25
* E2	4	#7	STR	3'-6"	29
* E3	4	#7	STR	4'-0"	33
* E4	4	#7	STR	4'-6"	37
* E5	4	#7	STR	4'-10"	40
* F1	4	#6	STR	1'-10"	11
* F2	4	#6	STR	3'-1"	19
* F3	4	#6	STR	3'-6"	21
* S1	121	#5	1	6'-6"	820
* S2	121	#5	2	5'-6"	694
* S3	16	#5	STR	3'-6"	58
* EPOXY COATED REINF. STEEL					3090 LBS.
CLASS AA CONCRETE					19.6 C.Y.
1'-4" X 3'-0 1/2" CONCRETE PARAPET					127.12 L.F.

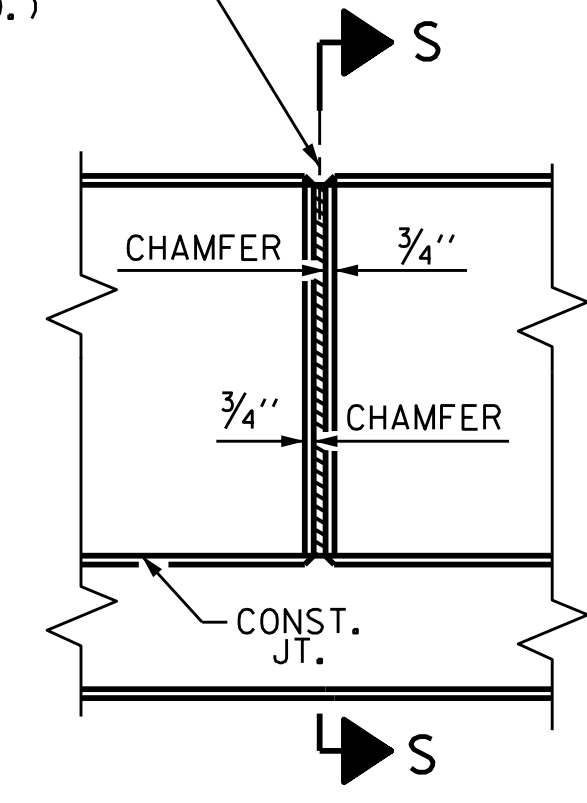


END VIEW

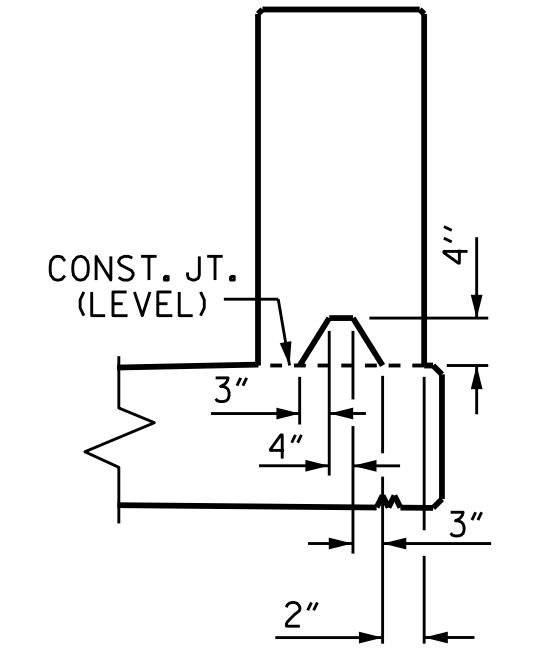


ELEVATION

1/2" EXP. JT. MAT'L HELD IN PLACE WITH GALVANIZED NAILS.
(NOTE: OMIT EXP. JT. MAT'L. WHEN SLIP FORM IS USED.)

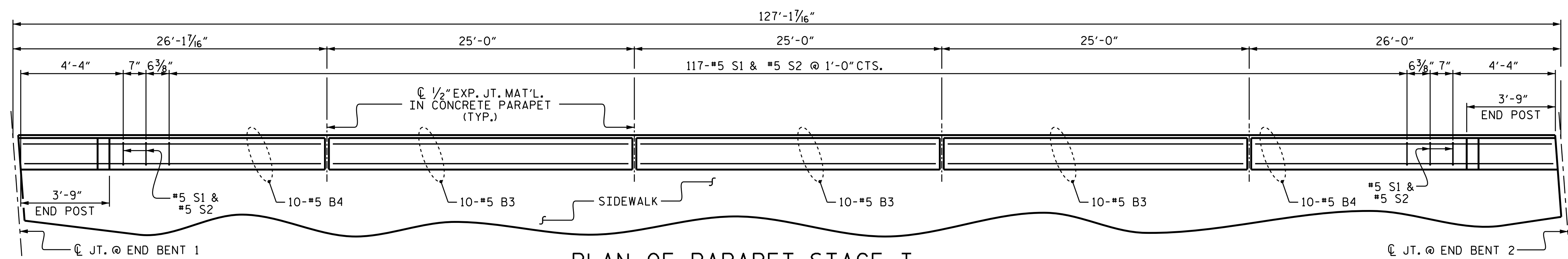


ELEVATION AT EXPANSION JOINTS
BARRIER RAIL DETAILS



SECTION S-S
AT DAM IN OPEN JOINT
(THIS IS TO BE USED ONLY WHEN SLIP FORM IS USED)

PARAPET AND END POST FOR TWO BAR METAL RAIL



PLAN OF PARAPET-STAGE I

DIMENSIONS ARE GIVEN ALONG THE BACK FACE OF THE PARAPET

NOTES

ALL REINFORCING STEEL IN PARAPETS AND END POSTS SHALL BE EPOXY COATED.

GROOVED CONTRACTION JOINTS, 1/2" IN DEPTH, SHALL BE TOOLED IN ALL EXPOSED FACES OF THE PARAPET AND IN ACCORDANCE WITH ARTICLE 825-10(B) OF THE STANDARD SPECIFICATIONS. A CONTRACTION JOINT SHALL BE LOCATED AT EACH THIRD POINT BETWEEN PARAPET EXPANSION JOINTS. ONLY ONE CONTRACTION JOINT IS REQUIRED AT MIDPOINT OF PARAPET SEGMENTS LESS THAN 20 FEET IN LENGTH AND NO CONTRACTION JOINTS ARE REQUIRED FOR THOSE SEGMENTS LESS THAN 10 FEET IN LENGTH.

PARAPET IN THE SPAN SHALL NOT BE CAST UNTIL ALL SLAB CONCRETE IN THE SPAN HAS BEEN CAST AND HAS REACHED A MINIMUM COMPRESSIVE STRENGTH OF 3,000 PSI.

PAYMENT FOR THE END POSTS SHALL BE INCLUDED IN THE PAY ITEM FOR "1'-4" X 3'-0 1/2" CONCRETE PARAPET."

AESTHETIC DETAILS NOT SHOWN FOR CLARITY. SEE "CONCRETE PARAPET AESTHETIC DETAILS" SHEET.

THE COST OF THE 2" PVC CONDUIT SHALL BE CONSIDERED INCIDENTAL TO THE CONCRETE PARAPET.



DocuSigned by:
T.L. Averette
F248839306F40E...
3/29/2016

DRAWN BY :	T.L. AVERETTE	DATE :	11-14
CHECKED BY :	J.P. ADAMS	DATE :	07-15
DESIGN ENGINEER OF RECORD :	T.L. AVERETTE	DATE :	09-15

29-MAR-2016 09:20
R:\Structures\Plans\STR 2\SUPERSTRUCTURE\B4490.SD_CP.dgn
Jpodoms

DOCUMENT NOT CONSIDERED FINAL UNLESS ALL SIGNATURES COMPLETED

PROJECT NO. B-4490
CUMBERLAND COUNTY
STATION: 35+23.40 -L-
SHEET 1 OF 2

STATE OF NORTH CAROLINA DEPARTMENT OF TRANSPORTATION RALEIGH					
SUPERSTRUCTURE CONCRETE PARAPET DETAILS STAGE I					
REVISIONS					
NO.	BY:	DATE:	NO.	BY:	DATE:
1			3		
2			4		
SHEET NO. S-62					TOTAL SHEETS 84