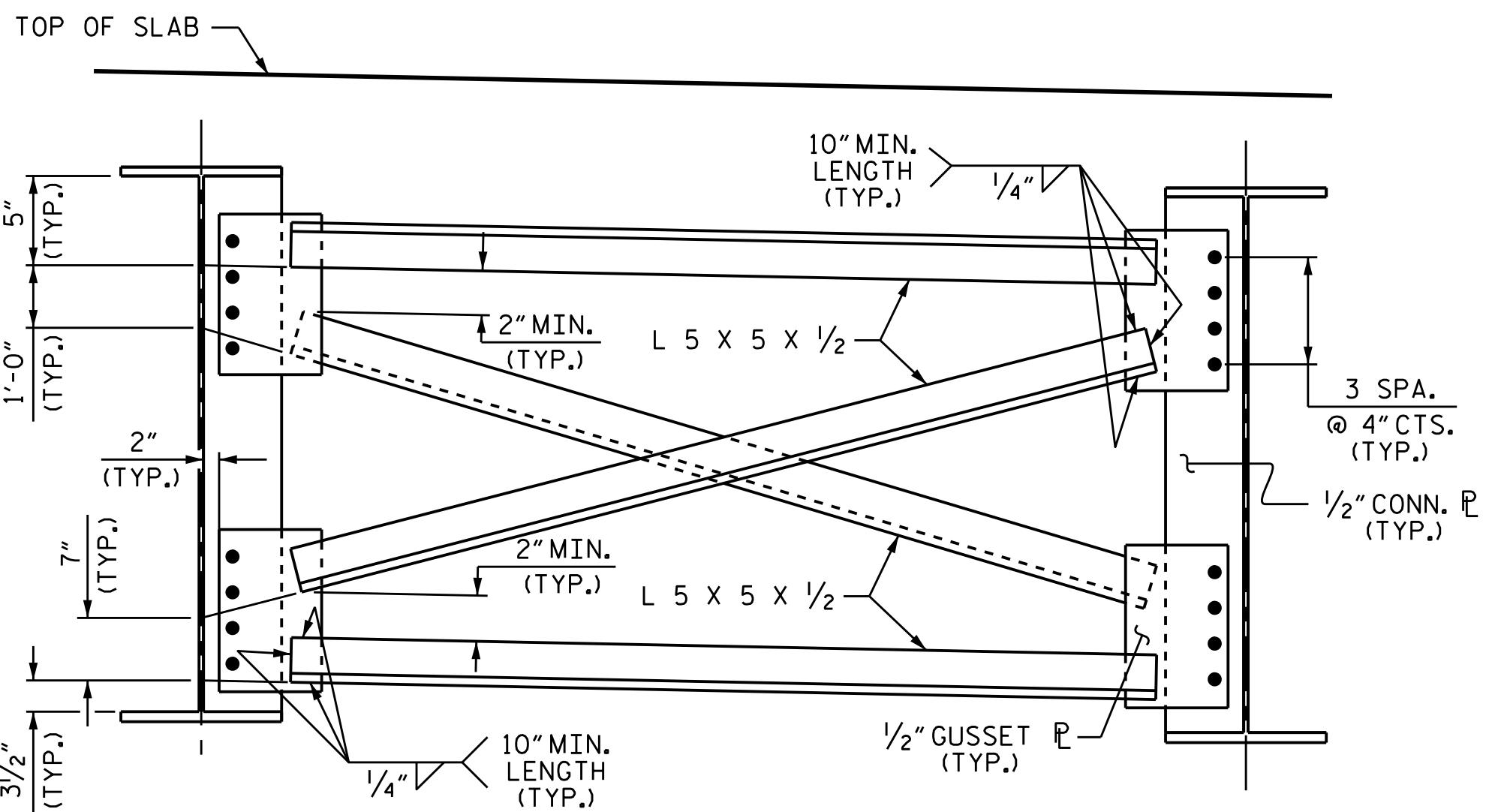
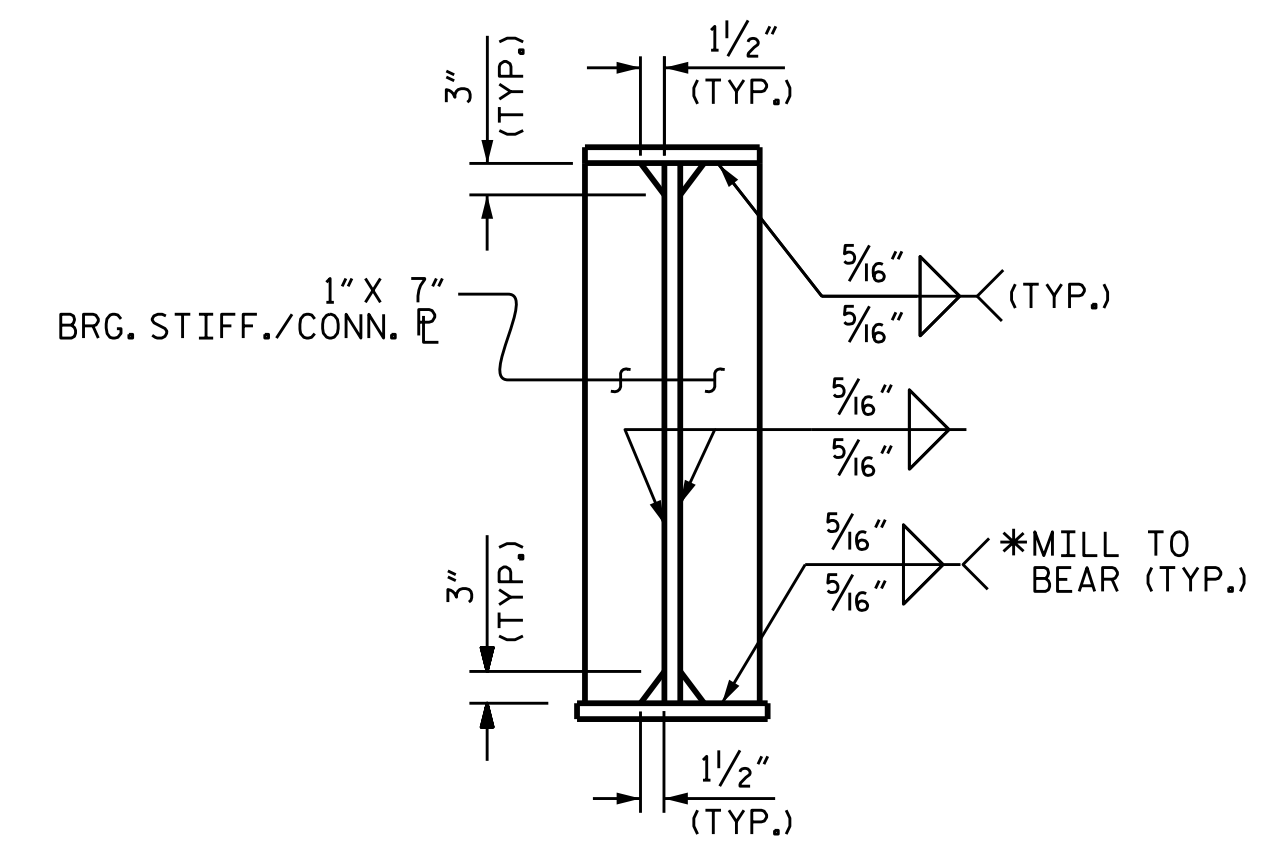


TYPICAL END BENT DIAPHRAGM (D1)

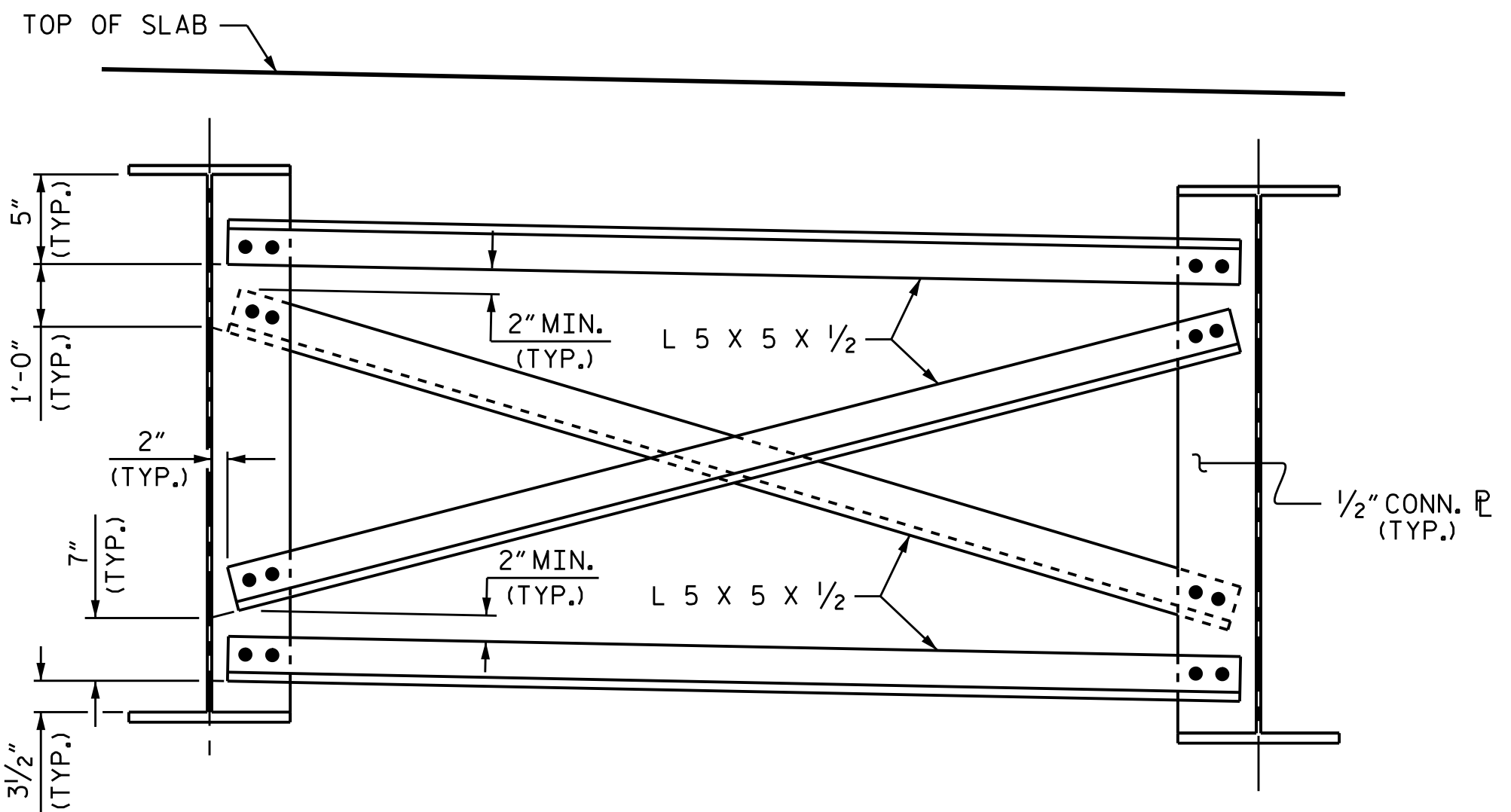


OPTIONAL INTERMEDIATE DIAPHRAGM

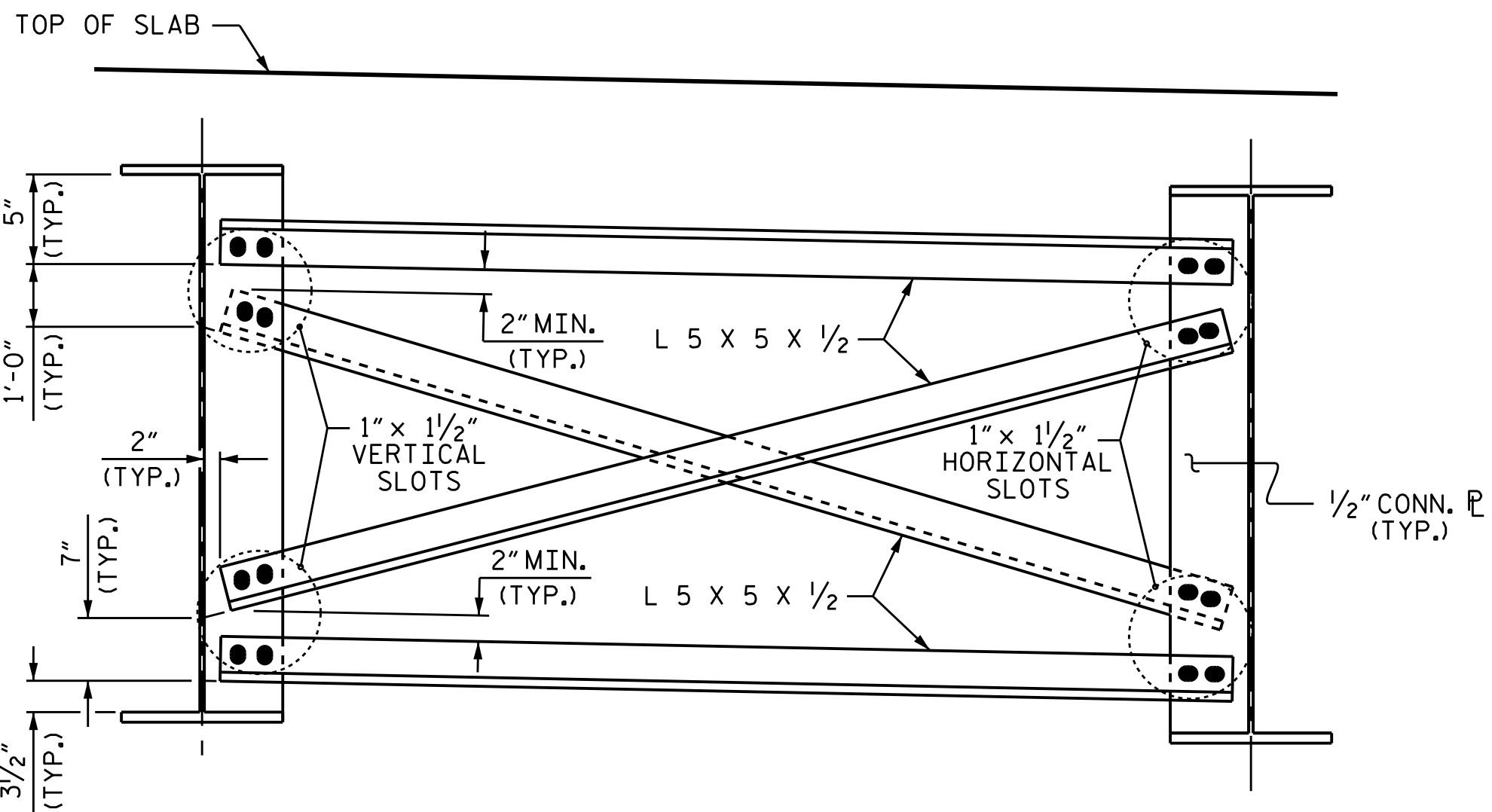


BEARING STIFFENER / CONNECTOR PLATE

(@ END BENT DIAPHRAGMS)
* NOTE: WELD ONLY WHEN USED AS A CONNECTOR PLATE

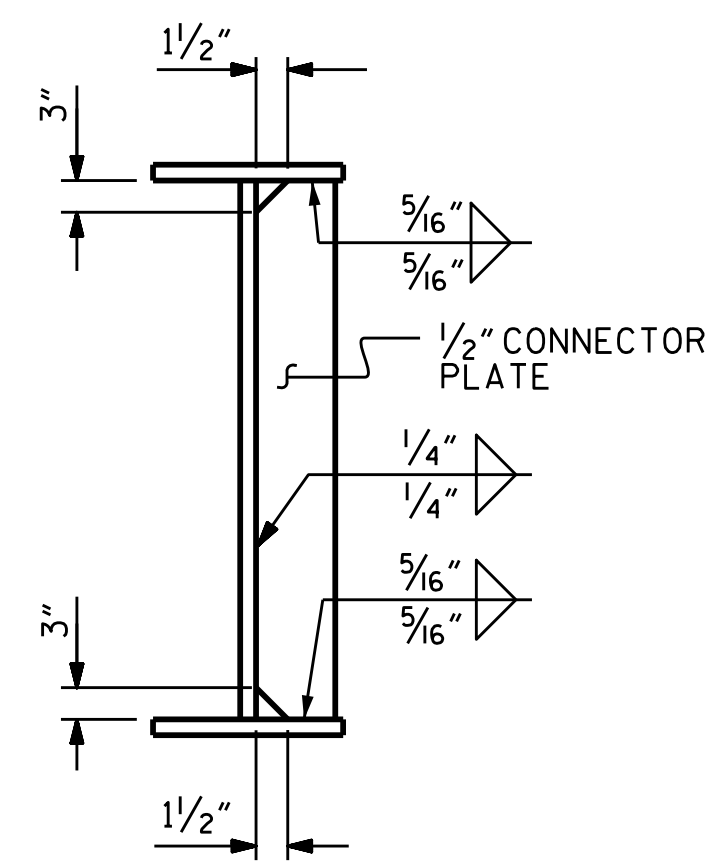


TYPICAL INTERMEDIATE DIAPHRAGM (D2)



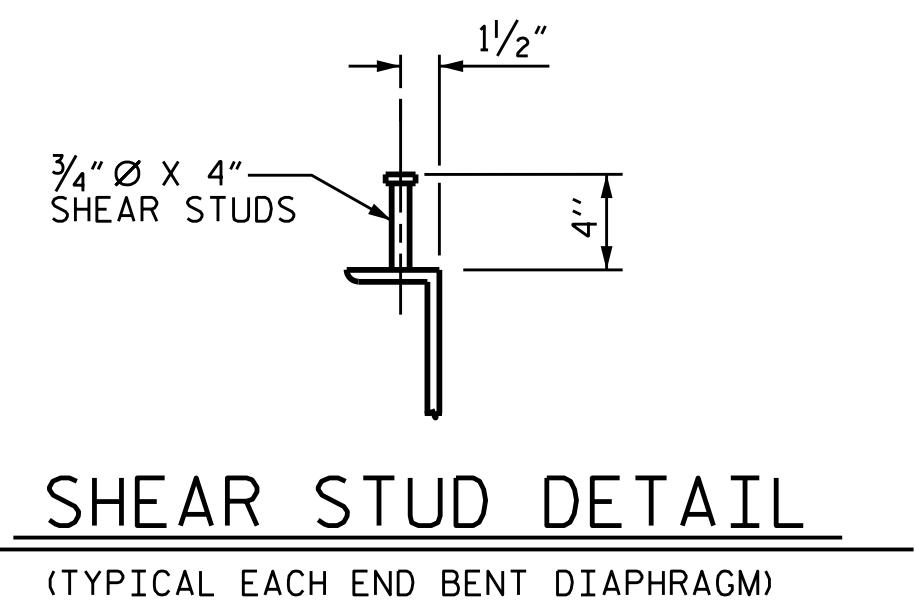
TYPICAL INTERMEDIATE DIAPHRAGM (D3)

NOTE: NUTS ON BOLTS FOR CONNECTING DIAPHRAGM TO CONNECTOR PLATE SHALL BE LEFT LOOSE FOR PURPOSE OF ADJUSTMENT UNTIL BOTH SIDES OF SLAB HAVE BEEN POURED.

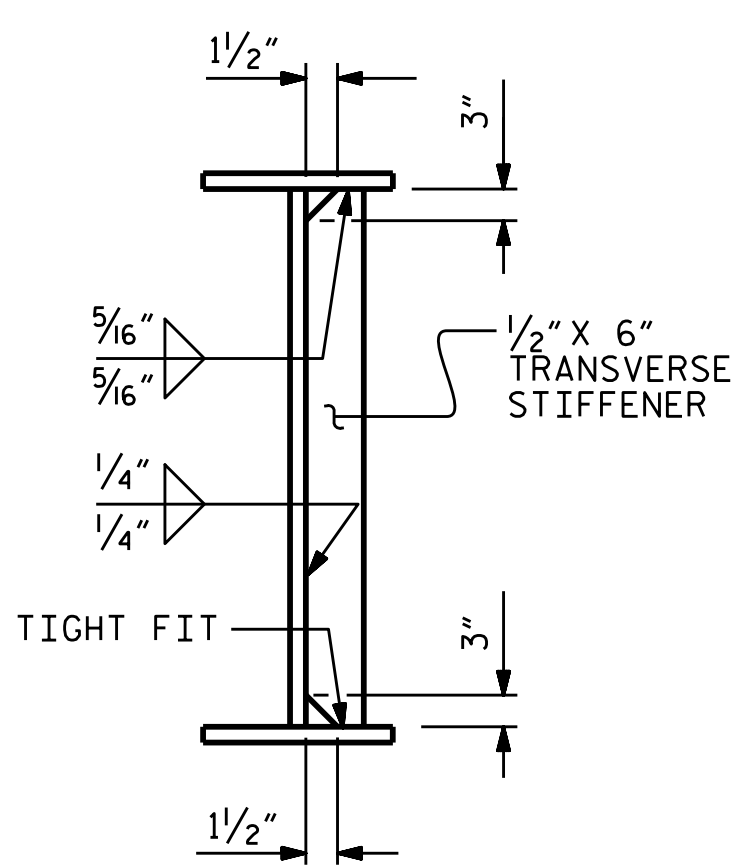


CONNECTOR PLATE

(@ INTERMEDIATE DIAPHRAGMS)



SHEAR STUD DETAIL
(TYPICAL EACH END BENT DIAPHRAGM)



TRANSVERSE STIFFENER

PROJECT NO. B-4490
CUMBERLAND COUNTY
STATION: 35+23.40 -L-

SHEET 2 OF 3



DocuSigned by:
3/29/2016

STATE OF NORTH CAROLINA
DEPARTMENT OF TRANSPORTATION
RALEIGH
SUPERSTRUCTURE
STRUCTURAL STEEL
DETAILS

DRAWN BY : I.L. AVERETTE DATE : 01-15
CHECKED BY : J.P. ADAMS DATE : 07-15
DESIGN ENGINEER OF RECORD : I.L. AVERETTE DATE : 09-15

DOCUMENT NOT CONSIDERED
FINAL UNLESS ALL
SIGNATURES COMPLETED

REVISIONS						SHEET NO.	
NO.	BY:	DATE:	NO.	BY:	DATE:	S-54	
1			3			TOTAL SHEETS	
2			4			84	