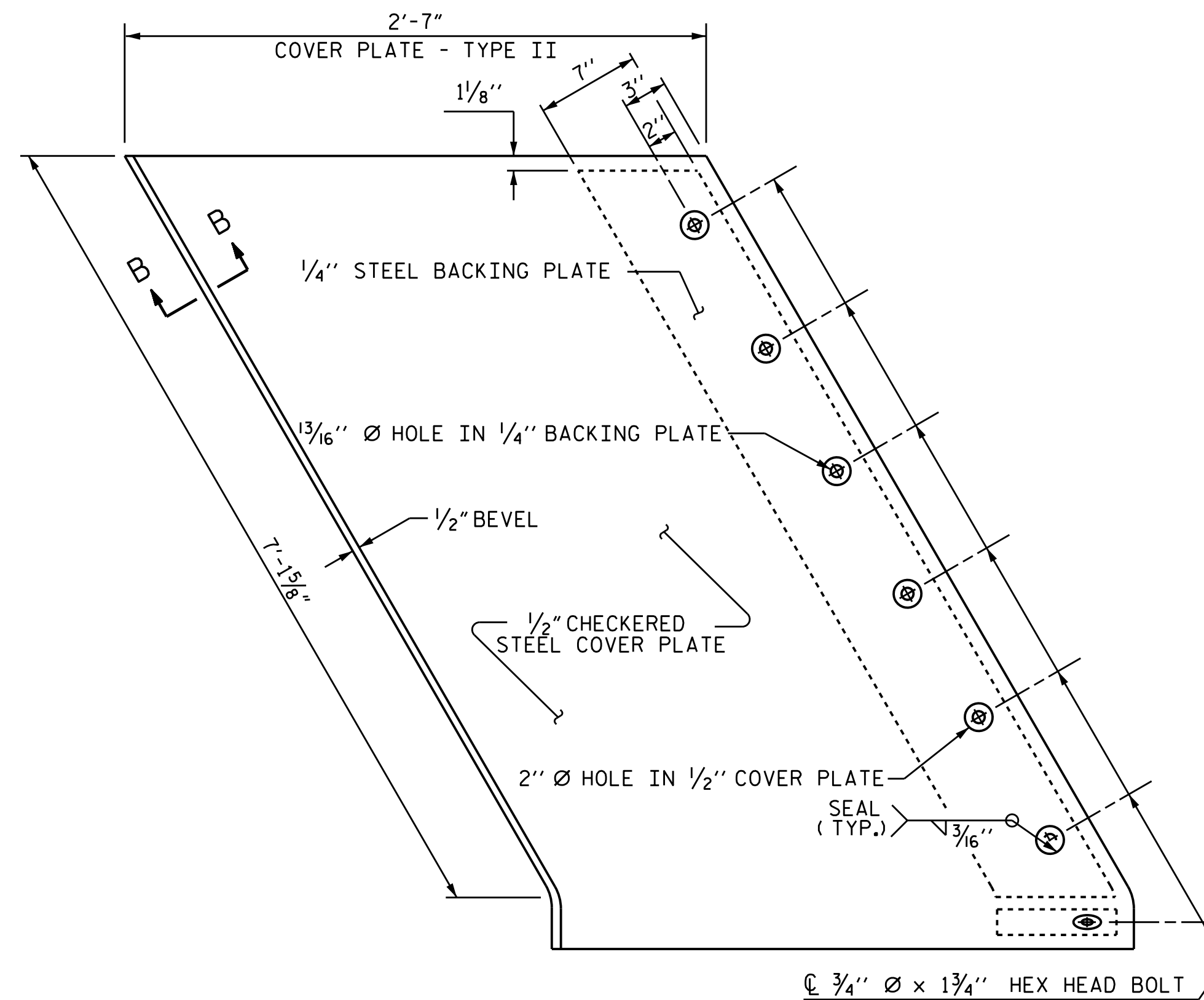


END VIEW  
(NORMAL TO SIDEWALK)

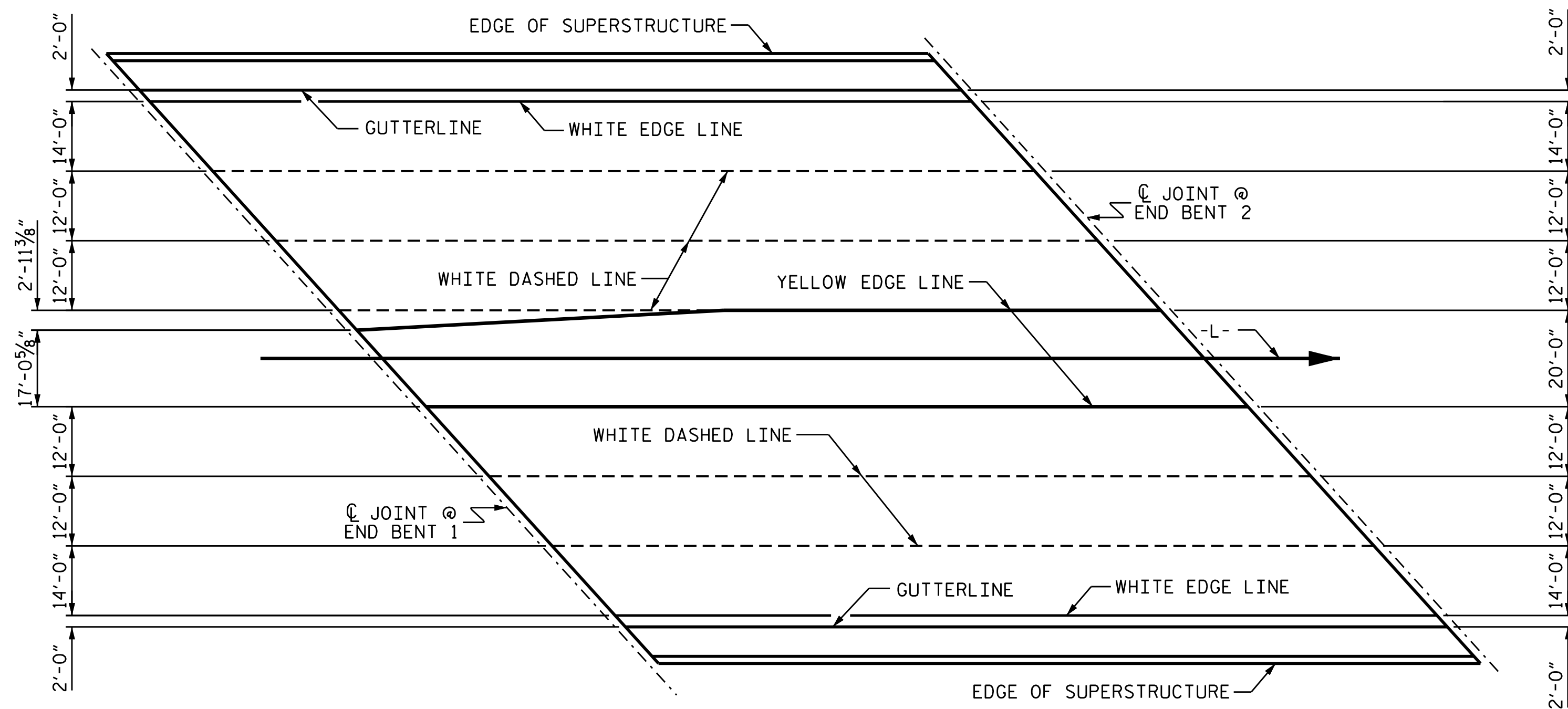
\* CONCRETE RECESS DIMENSIONS:

- 13/16" FOR THE SIDE OF THE JOINT HAVING THE 1/2" COVER PLATE WITH A 1/4" BACKING PLATE.
- 9/16" FOR THE SIDE OF THE JOINT HAVING ONLY THE 1/2" COVER PLATE.

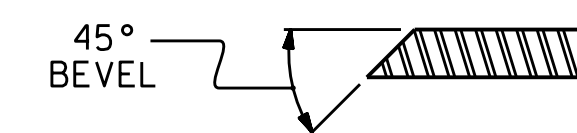


TYPE II - PLAN VIEW

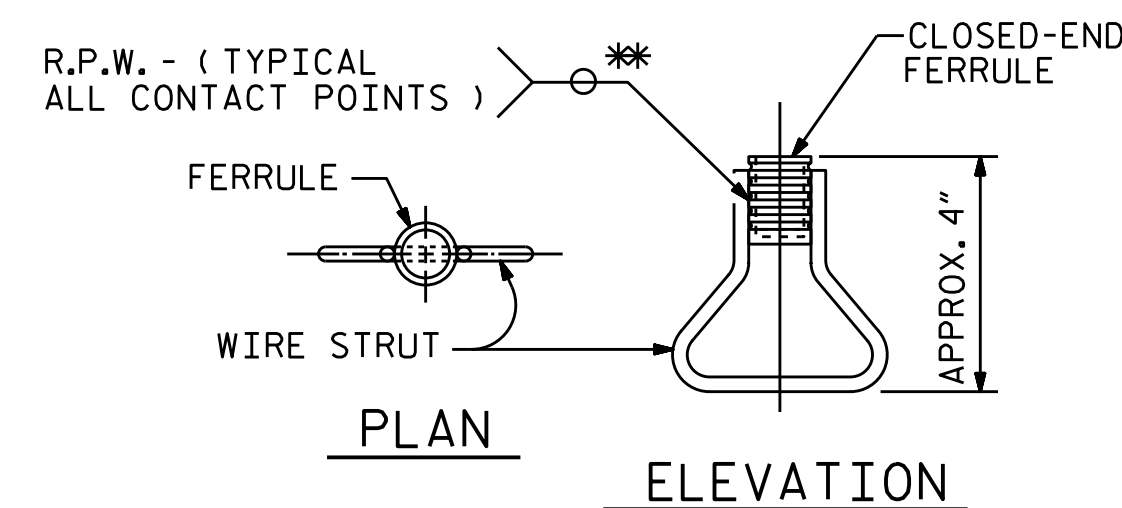
COVER PLATE DETAILS



PAVEMENT MARKING ALIGNMENT



SECTION B - B



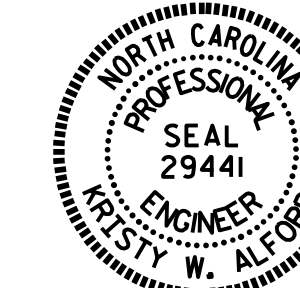
CONCRETE INSERT

\*\* EACH WELDED ATTACHMENT OF WIRE TO FERRULE SHALL DEVELOP THE TENSILE STRENGTH OF THE WIRE.

PROJECT NO. B-4490  
CUMBERLAND COUNTY  
STATION: 29+57.01 -L-

SHEET 3 OF 3

STATE OF NORTH CAROLINA  
DEPARTMENT OF TRANSPORTATION  
RALEIGH  
STANDARD  
EXPANSION JOINT  
SEAL DETAILS  
FOR SIDEWALK



DocuSigned by:  
Tristram W. Alford  
3/29/2016

ASSEMBLED BY :	A. SORSENGINH	DATE :	5/2015
CHECKED BY :	J.P. ADAMS	DATE :	6/2015
DRAWN BY :	REK 10/87	REV. 10/17/00	RWW/LES
CHECKED BY :	CRK 1/88	REV. 5/11/06	TLA/GM
		REV. 10/1/11	MAA/GM

DOCUMENT NOT CONSIDERED  
FINAL UNLESS ALL  
SIGNATURES COMPLETED

REVISIONS						SHEET NO.
NO.	BY:	DATE:	NO.	BY:	DATE:	S-29
1			3			TOTAL SHEETS
2			4			84

STR. #1

STD. NO. EJS4