

**NOTES**

SIDEWALK IN THE SPAN SHALL NOT BE CAST UNTIL ALL SLAB CONCRETE IN THE SPAN HAS BEEN CAST AND HAS REACHED A MINIMUM COMPRESSIVE STRENGTH OF 3,000 PSI.

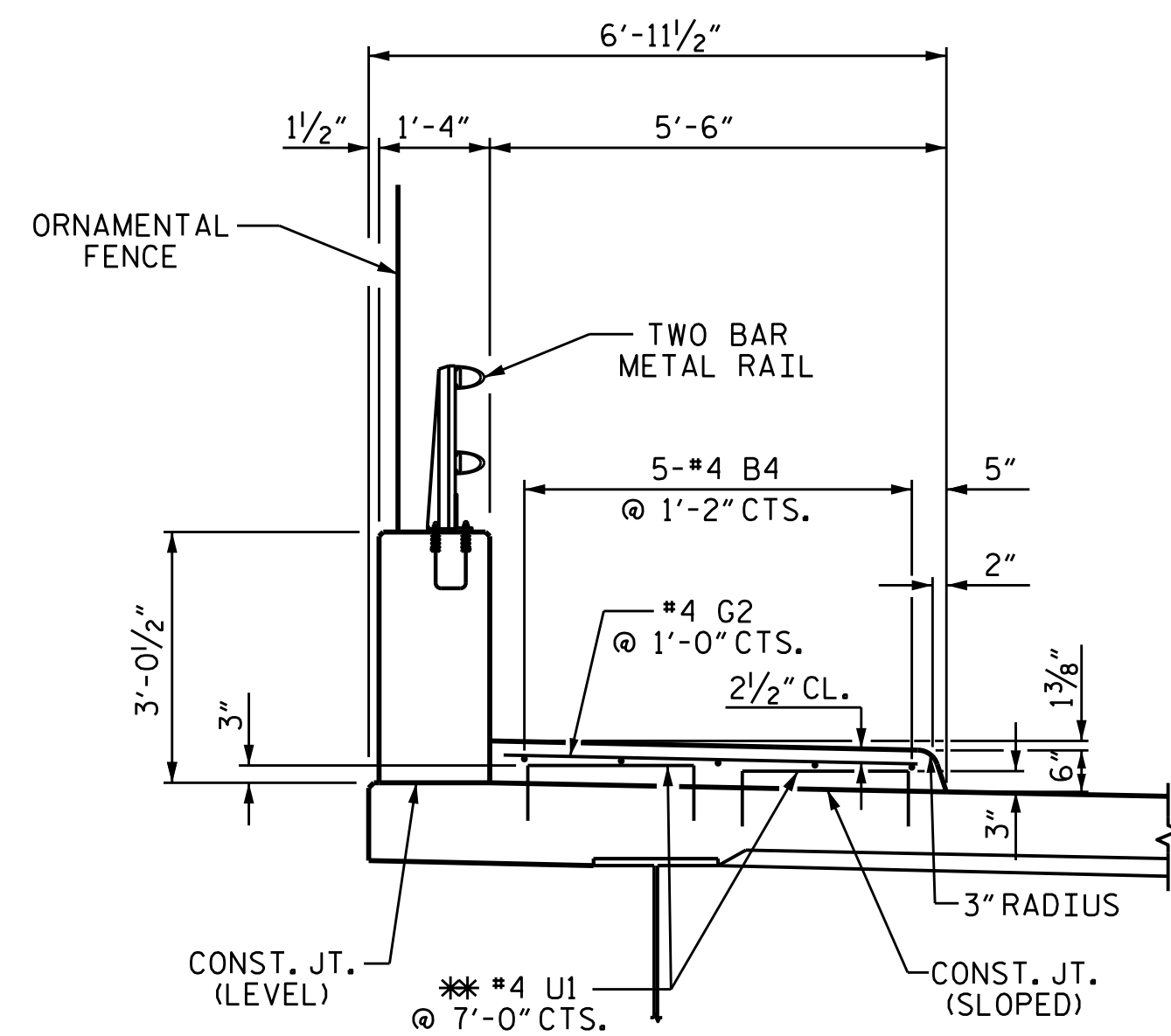
GROOVED CONTRACTION JOINTS, 1/2" IN DEPTH, SHALL BE TOOLED IN ALL EXPOSED FACES OF THE SIDEWALK IN ACCORDANCE WITH ARTICLE 825-10(B) OF THE STANDARD SPECIFICATIONS. THE CONTRACTION JOINTS SHALL BE LOCATED AT A SPACING OF 8 FT. TO 10 FT. BETWEEN EXPANSION JOINTS. NO CONTRACTION JOINT WILL BE REQUIRED FOR SEGMENTS LESS THAN 10 FT. IN LENGTH.

ALL REINFORCING STEEL IN THE SIDEWALK SHALL BE EPOXY COATED.

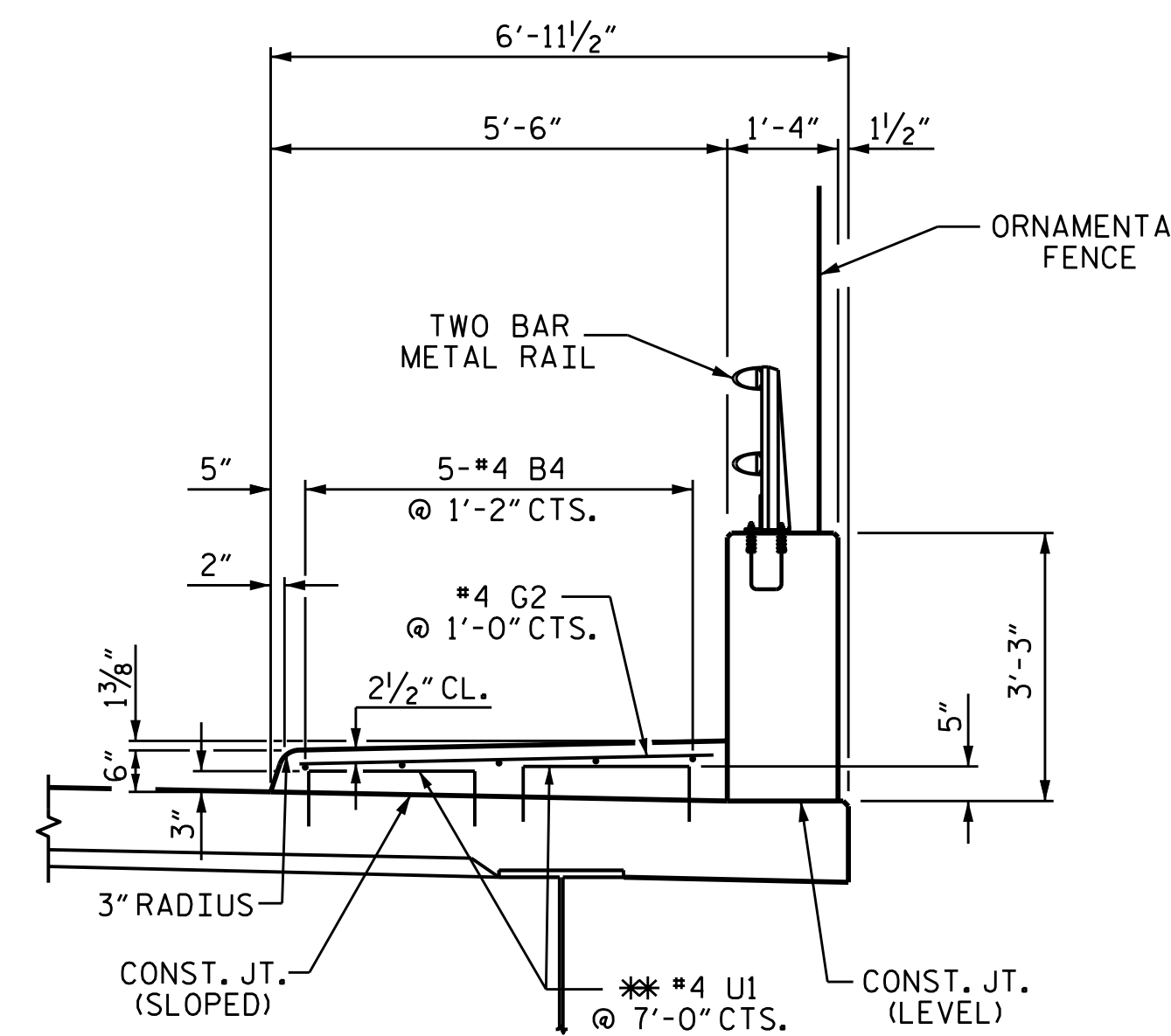
SEE "EXPANSION JOINT SEAL DETAILS FOR SIDEWALK" SHEETS FOR COVER PLATE DETAILS.

FOR SIDEWALK ON APPROACH SLAB, SEE APPROACH SLAB SHEETS.

FOR SIDEWALK REINFORCING STEEL AND CONCRETE QUANTITIES, SEE SUPERSTRUCTURE "BILL OF MATERIAL".

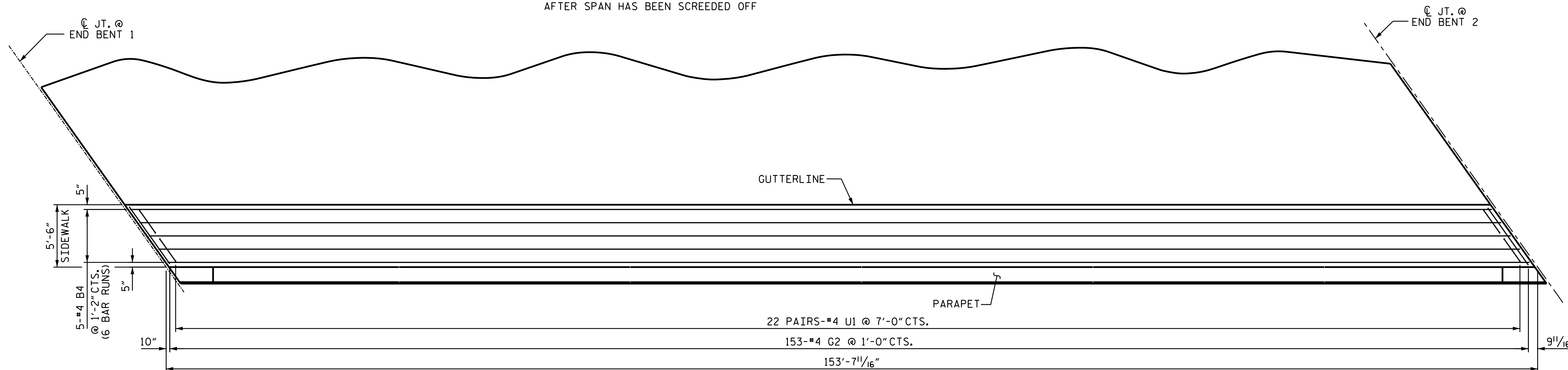


**SECTION THRU SIDEWALK**  
LEFT SIDE



**SECTION THRU SIDEWALK**  
RIGHT SIDE

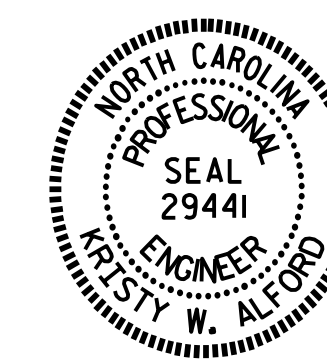
\*\* #4 U1 MAY BE PUSHED INTO GREEN CONCRETE AFTER SPAN HAS BEEN SCREEDED OFF



**PLAN OF SIDEWALK**

RIGHT SIDEWALK SHOWN, LEFT SIDE SIMILAR

PROJECT NO. B-4490  
CUMBERLAND COUNTY  
 STATION: 29+57.01 -L-



DocuSigned by:  
 F245838800F40E...  
 3/29/2016

STATE OF NORTH CAROLINA  
 DEPARTMENT OF TRANSPORTATION  
 RALEIGH

**SUPERSTRUCTURE  
 SIDEWALK DETAILS**

DRAWN BY : A. SORSENGINH DATE : 5/2015  
 CHECKED BY : J.P. ADAMS DATE : 6/2015  
 DESIGN ENGINEER OF RECORD: A. SORSENGINH DATE : 9/2015

DOCUMENT NOT CONSIDERED  
 FINAL UNLESS ALL  
 SIGNATURES COMPLETED

REVISIONS						SHEET NO.
NO.	BY:	DATE:	NO.	BY:	DATE:	TOTAL SHEETS
1			3			S-25
2			4			84