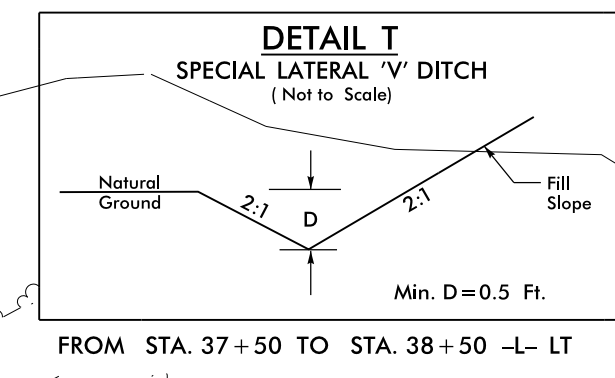
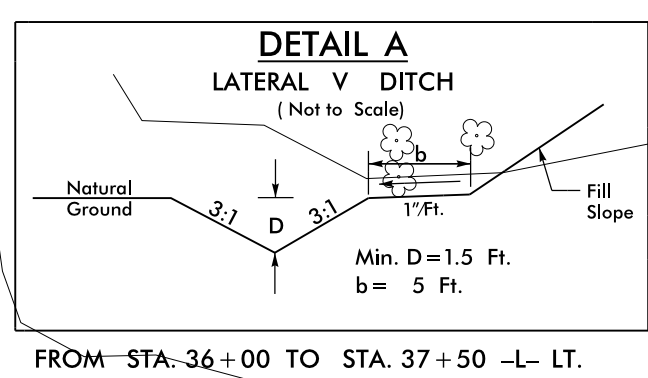


PROJECT REFERENCE NO.	SHEET NO.
B-4490	EC-9/CONST.9
RW SHEET NO.	
ROADWAY DESIGN ENGINEER	HYDRAULICS ENGINEER

CLEARING AND GRUBBING  
EROSION CONTROL FOR  
CONSTRUCTION SHEET 9

NOTE:  
PLACE TEMPORARY ROCK SEDIMENT DAMS TYPE - B  
AND TEMPORARY ROCK SILT CHECKS TYPE - A AT  
DRAINAGE OUTLETS.

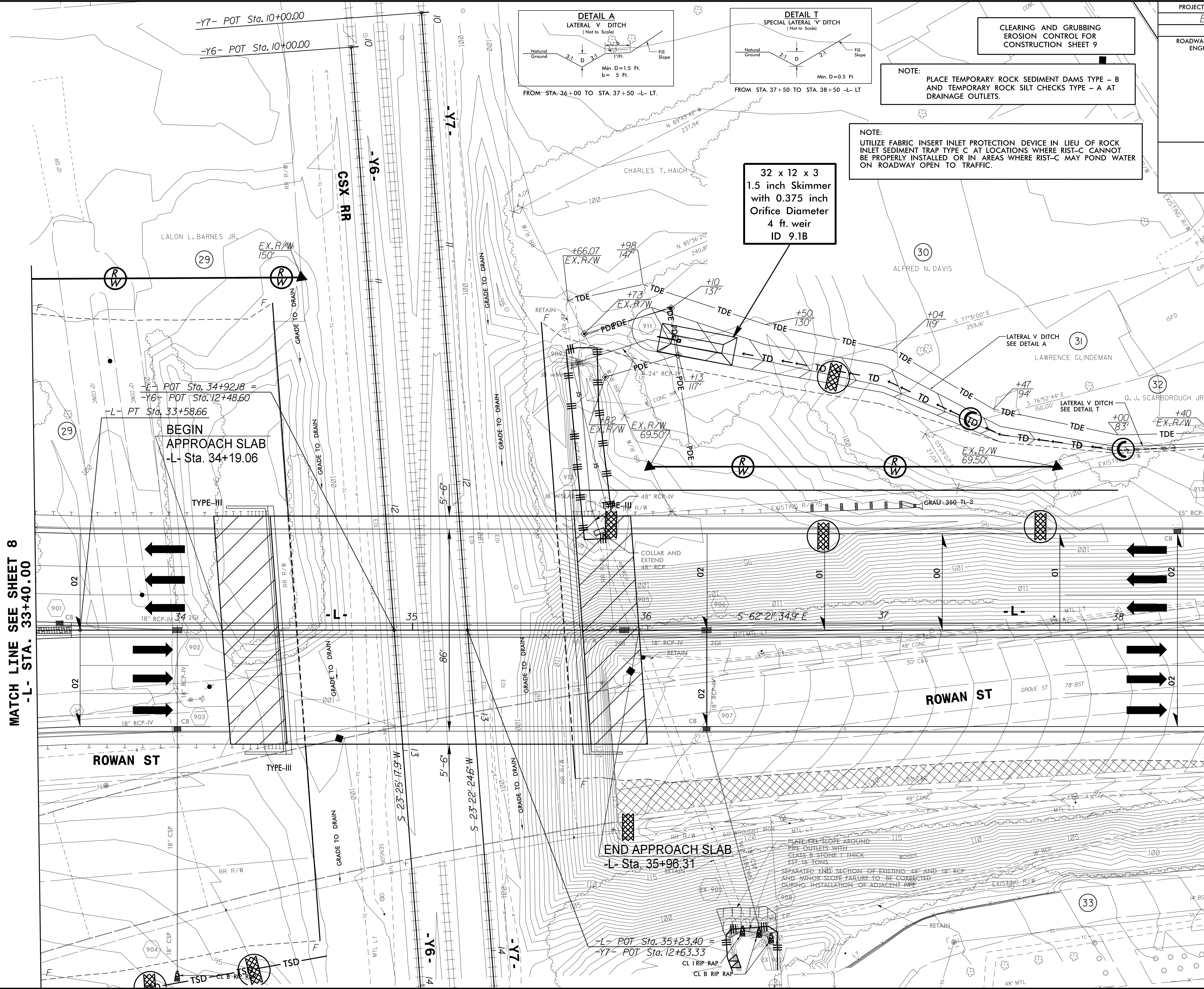
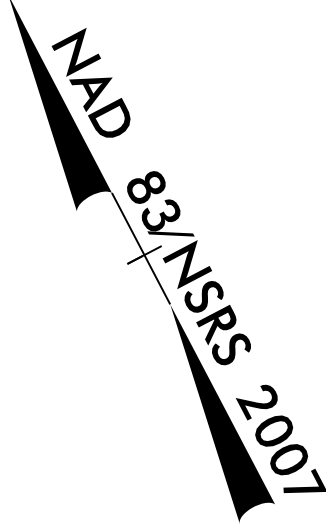
NOTE:  
UTILIZE FABRIC INSERT INLET PROTECTION DEVICE IN LIEU OF ROCK  
INLET SEDIMENT TRAP TYPE C AT LOCATIONS WHERE RST-C CANNOT  
BE PROPERLY INSTALLED OR IN AREAS WHERE RST-C MAY POND WATER  
ON ROADWAY OPEN TO TRAFFIC.



32 x 12 x 3  
1.5 inch Skimmer  
with 0.375 inch  
Orifice Diameter  
4 ft. weir  
ID 9.1B

MATCH LINE SEE SHEET 8  
-L- STA. 33+40.00

MATCH LINE SEE SHEET 10  
-L- STA. 38+40.00



STAMPED  
CONCRETE  
MEDIAN

8/17/99  
 21-AUG-2015 15:55  
 R:\Information\9814490\EC.psh\_09.dgn  
 REVISIONS: 1  
 1  
 1