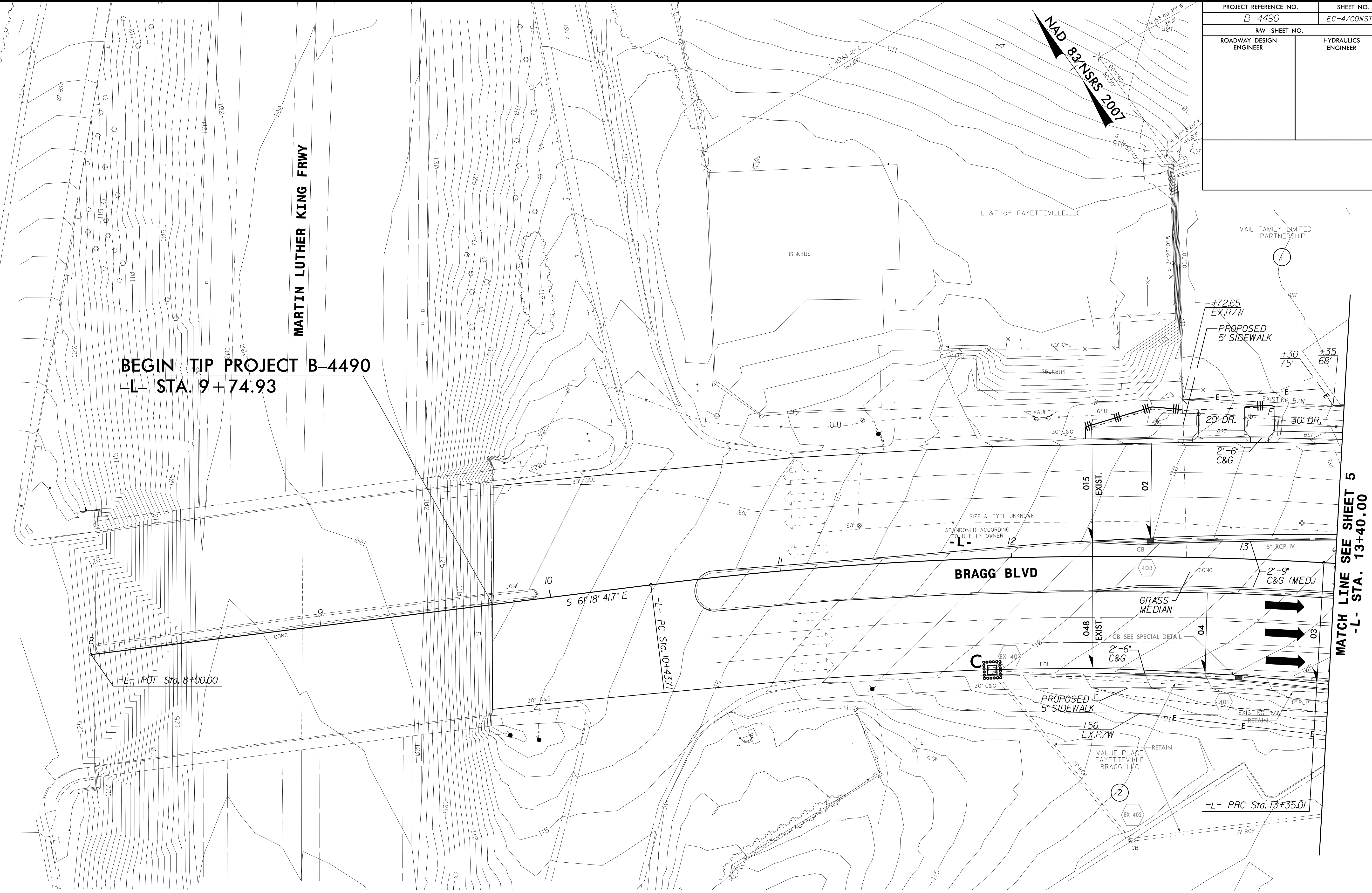


PROJECT REFERENCE NO. B-4490	SHEET NO. EC-4/CONST.4
RW SHEET NO.	
ROADWAY DESIGN ENGINEER	HYDRAULICS ENGINEER

8/17/99
21-AUG-2015 15:31
D:\projects\B4490\EC.psh_04.dgn
REVISION 1



BEGIN TIP PROJECT B-4490
-L- STA. 9+74.93

-L- POT Sta. 8+00.00

-L- PC Sta. 10+43.71

-L- PRC Sta. 13+35.01

MATCH LINE SEE SHEET 5
-L- STA. 13+40.00

NOTE:
UTILIZE FABRIC INSERT INLET PROTECTION DEVICE IN LIEU OF ROCK INLET SEDIMENT TRAP TYPE C AT LOCATIONS WHERE RIST-C CANNOT BE PROPERLY INSTALLED OR IN AREAS WHERE RIST-C MAY POND WATER ON ROADWAY OPEN TO TRAFFIC.

NOTE:
PLACE TEMPORARY ROCK SEDIMENT DAMS TYPE - B AND TEMPORARY ROCK SILT CHECKS TYPE - A AT DRAINAGE OUTLETS.

CLEARING AND GRUBBING EROSION CONTROL FOR CONSTRUCTION SHEET 4