

PROJECT REFERENCE NO. B-4490	SHEET NO. 4
RW SHEET NO.	
ROADWAY DESIGN ENGINEER SEAL 19563 NORTH CAROLINA PROFESSIONAL ENGINEER JAMES SCOTT HAYES	HYDRAULICS ENGINEER SEAL 039785 NORTH CAROLINA PROFESSIONAL ENGINEER C. Freeman
DOCUMENT NOT CONSIDERED FINAL UNLESS ALL SIGNATURES COMPLETED	
PLANS PREPARED BY: PARSONS BRINCKERHOFF 434 FAYETTEVILLE STREET SUITE 1500 RALEIGH, NC 27601 LICENSE NO. E-0165	
VAIL FAMILY LIMITED PARTNERSHIP DB 4594 PG 225	

-L- CURVE DATA

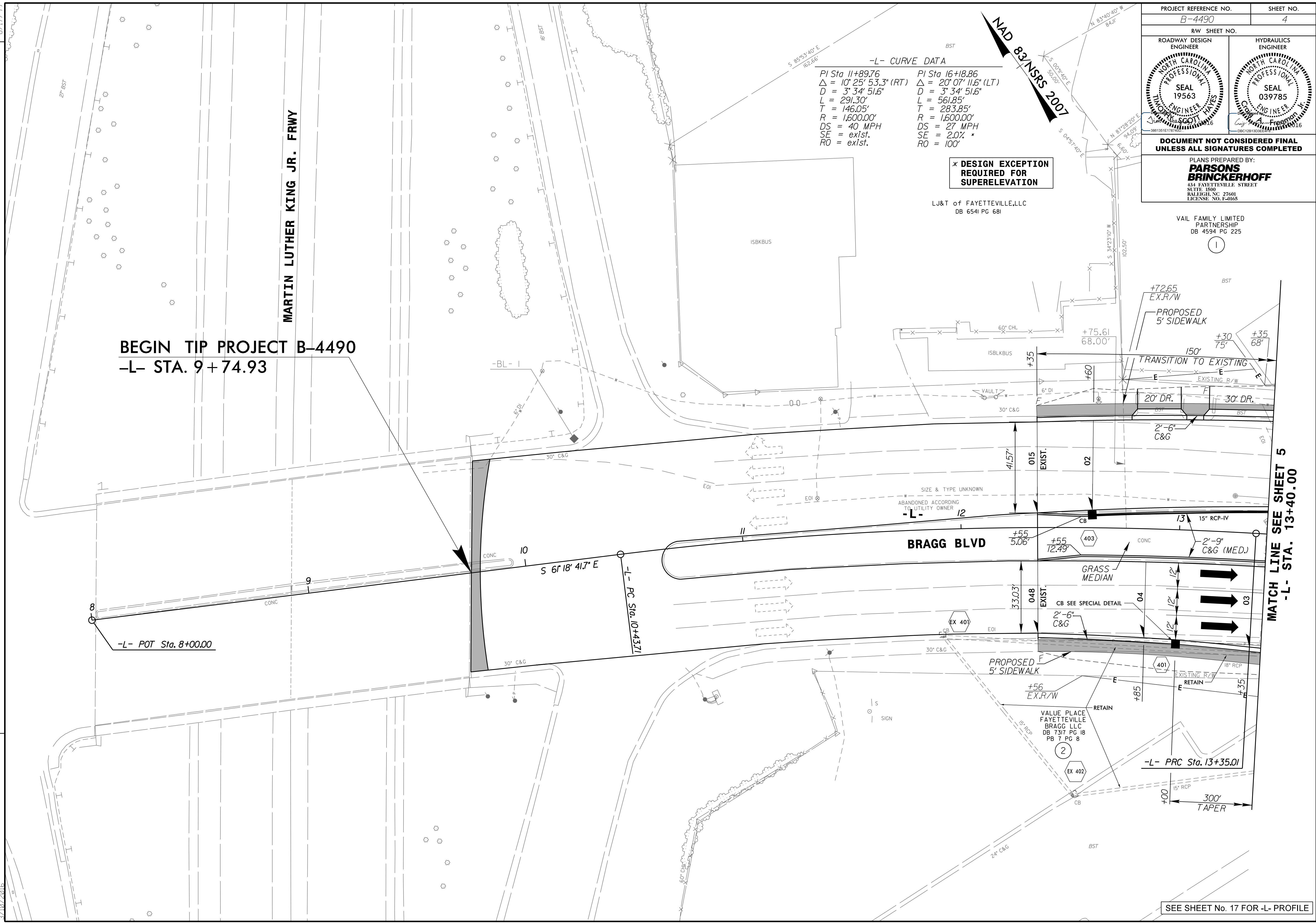
PI Sta 11+89.76	PI Sta 16+18.86
$\Delta = 10^\circ 25' 53.3"$ (RT)	$\Delta = 20^\circ 07' 11.6"$ (LT)
D = 3' 34' 51.6"	D = 3' 34' 51.6"
L = 291.30'	L = 561.85'
T = 146.05'	T = 283.85'
DS = 40 MPH	DS = 27 MPH
SE = exist.	SE = 2.0% *
RO = exist.	RO = 100'

*** DESIGN EXCEPTION
REQUIRED FOR
SUPERELEVATION**

LJ&T of FAYETTEVILLE, LLC
DB 6541 PG 681

**BEGIN TIP PROJECT B-4490
-L- STA. 9+74.93**

**MATCH LINE SEE SHEET 5
-L- STA. 13+40.00**



SEE SHEET No. 17 FOR -L- PROFILE

5/14/12 PM
B4490-F04-psh_04.dgn
3/10/2016