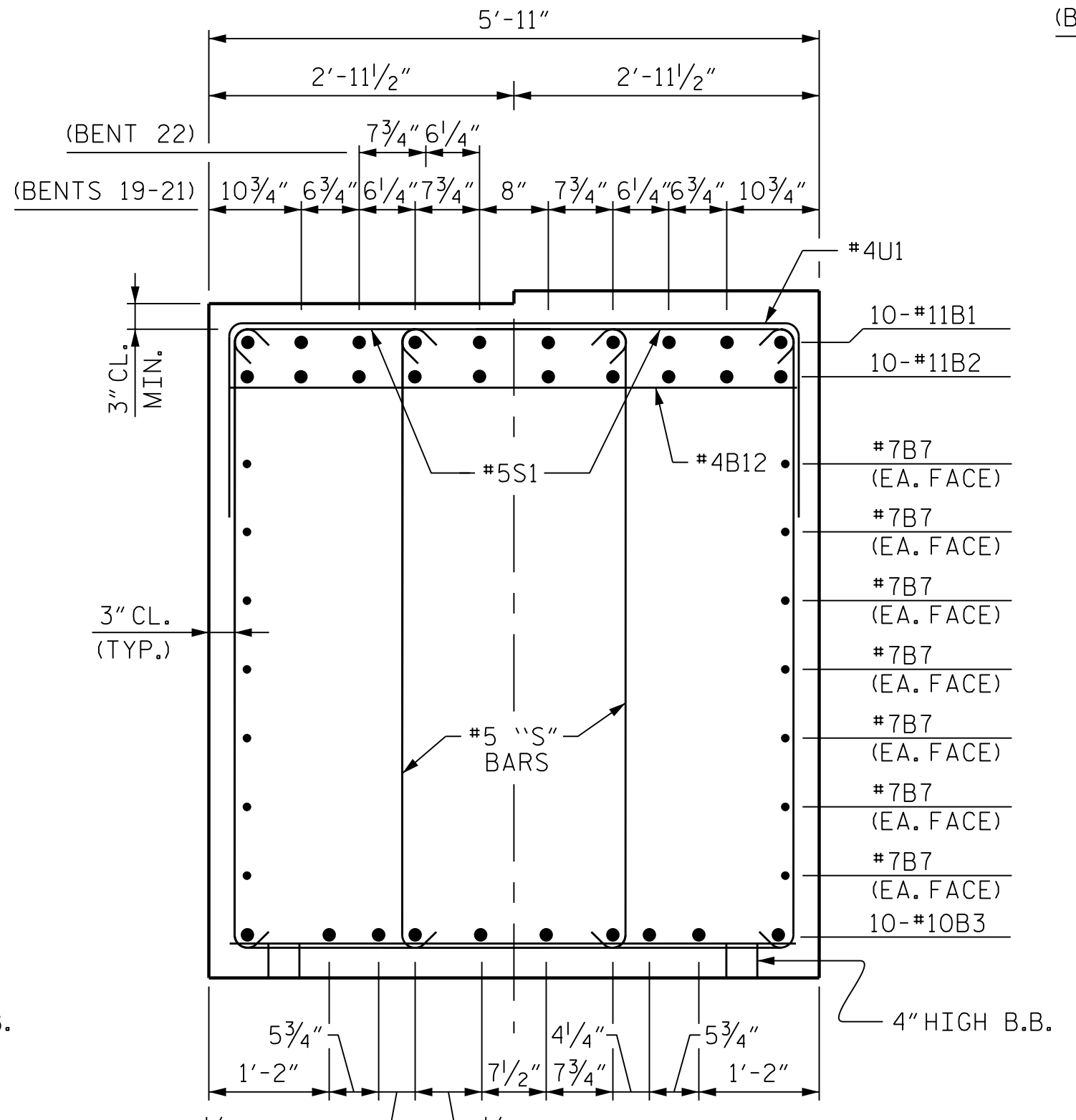


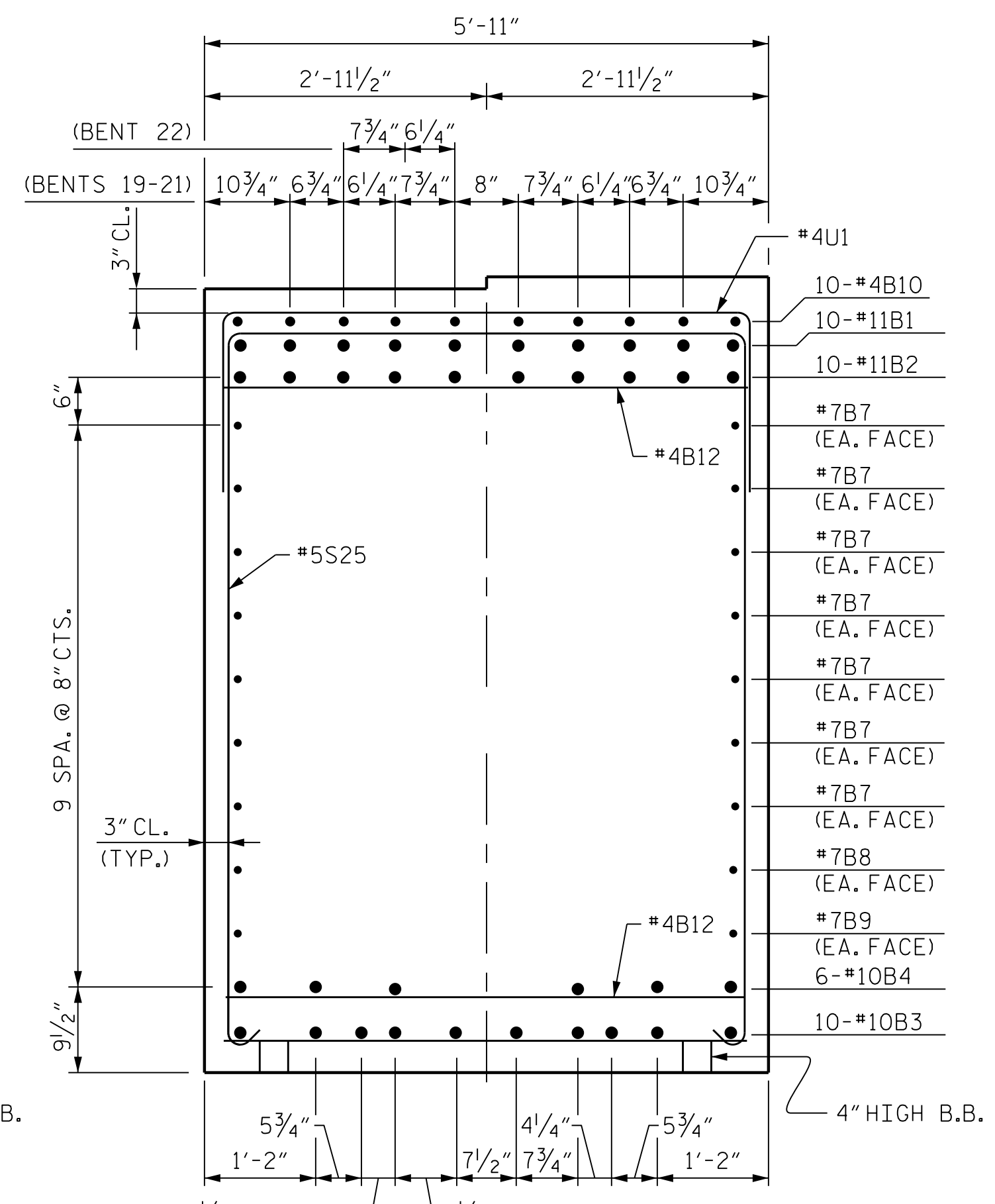
SECTION A-A

(BENT 19 SHOWN, BENTS 20, 21 & 22 SIMILAR)
(NO STEP IN BENTS 20 & 21)



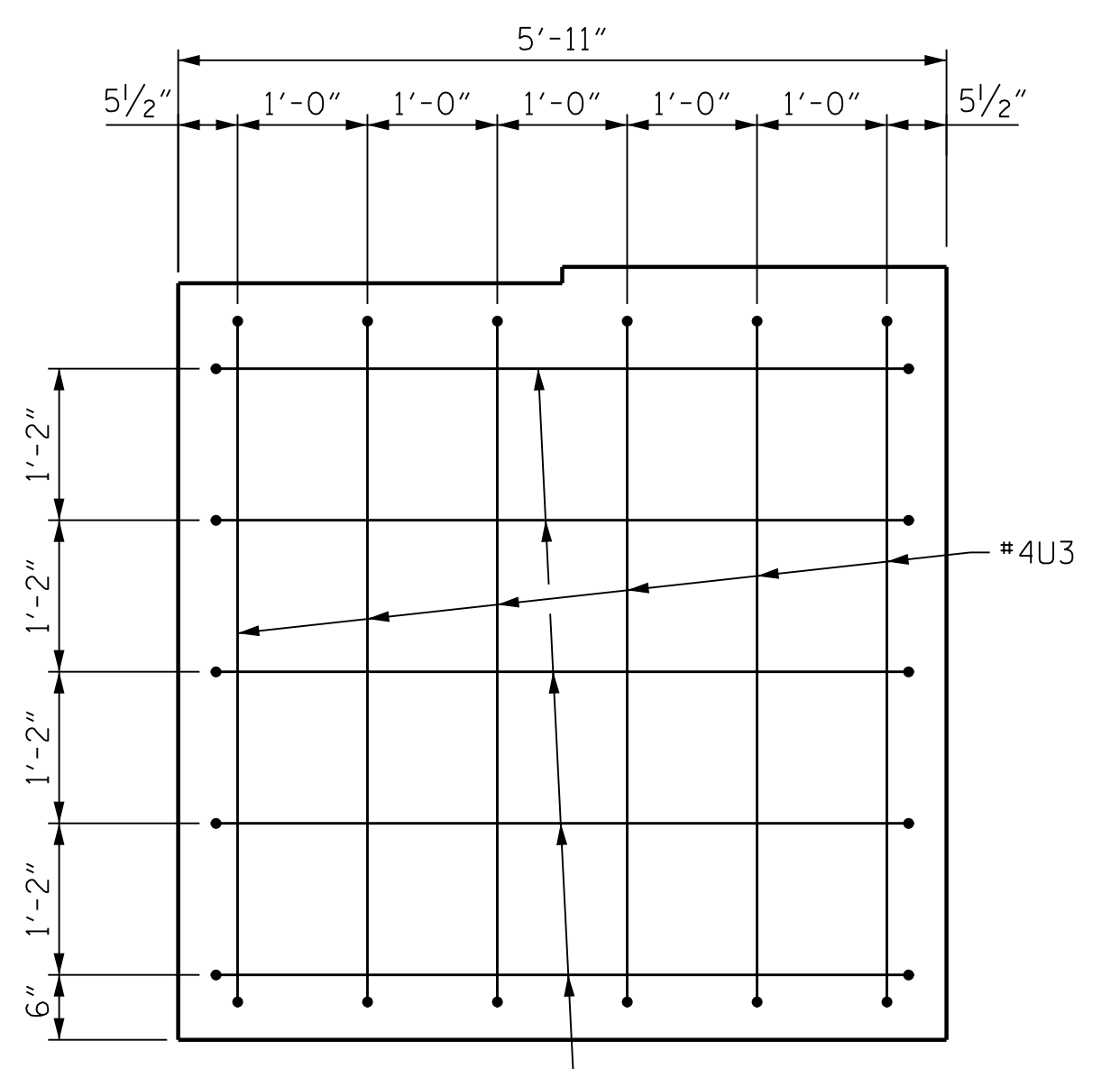
SECTION B-B

(BENT 19 SHOWN, BENTS 20, 21 & 22 SIMILAR)
(NO STEP IN BENTS 20 & 21)



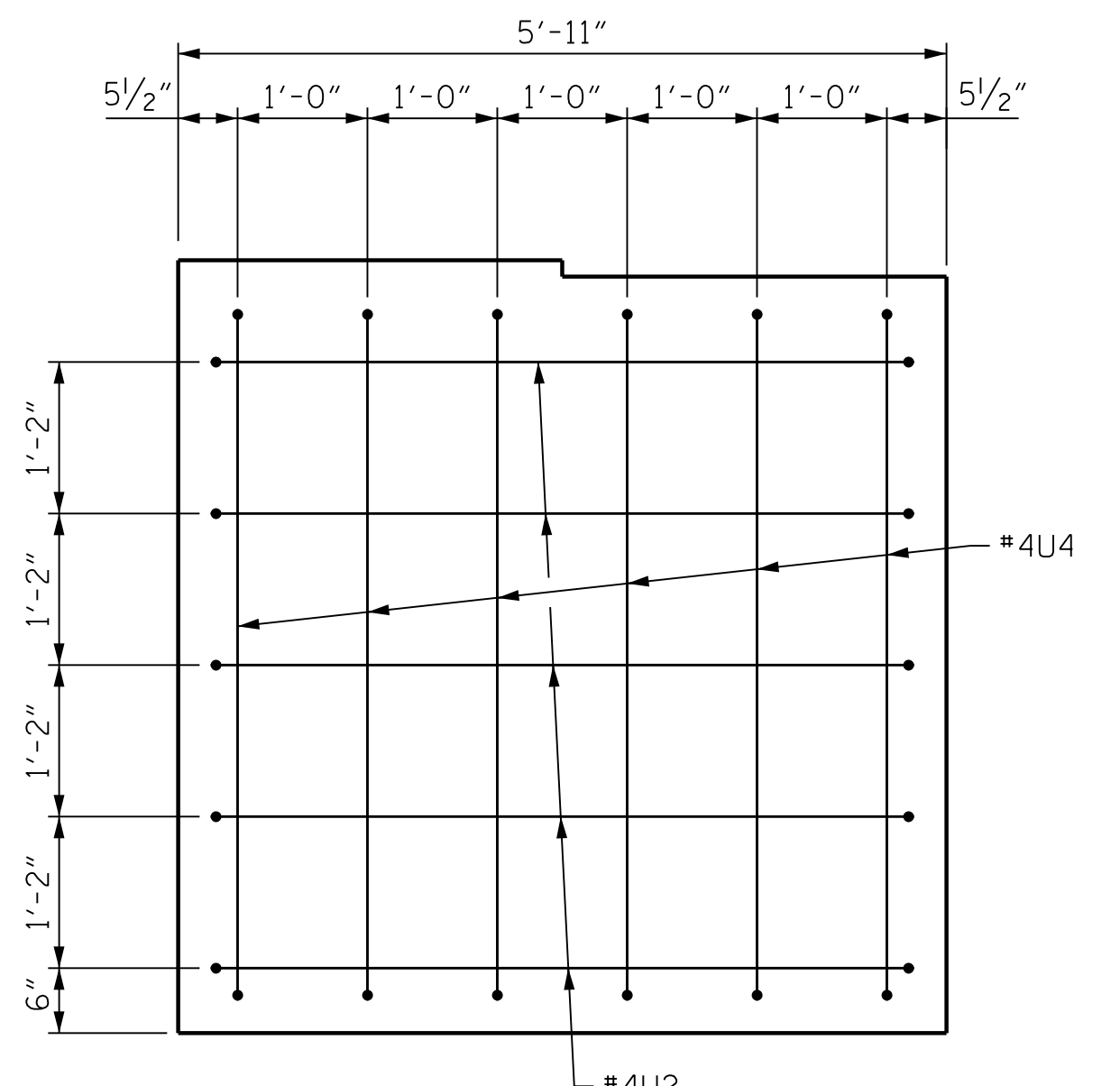
SECTION C-C

(BENT 19 SHOWN, BENTS 20, 21 & 22 SIMILAR)
(NO STEP IN BENTS 20 & 21)



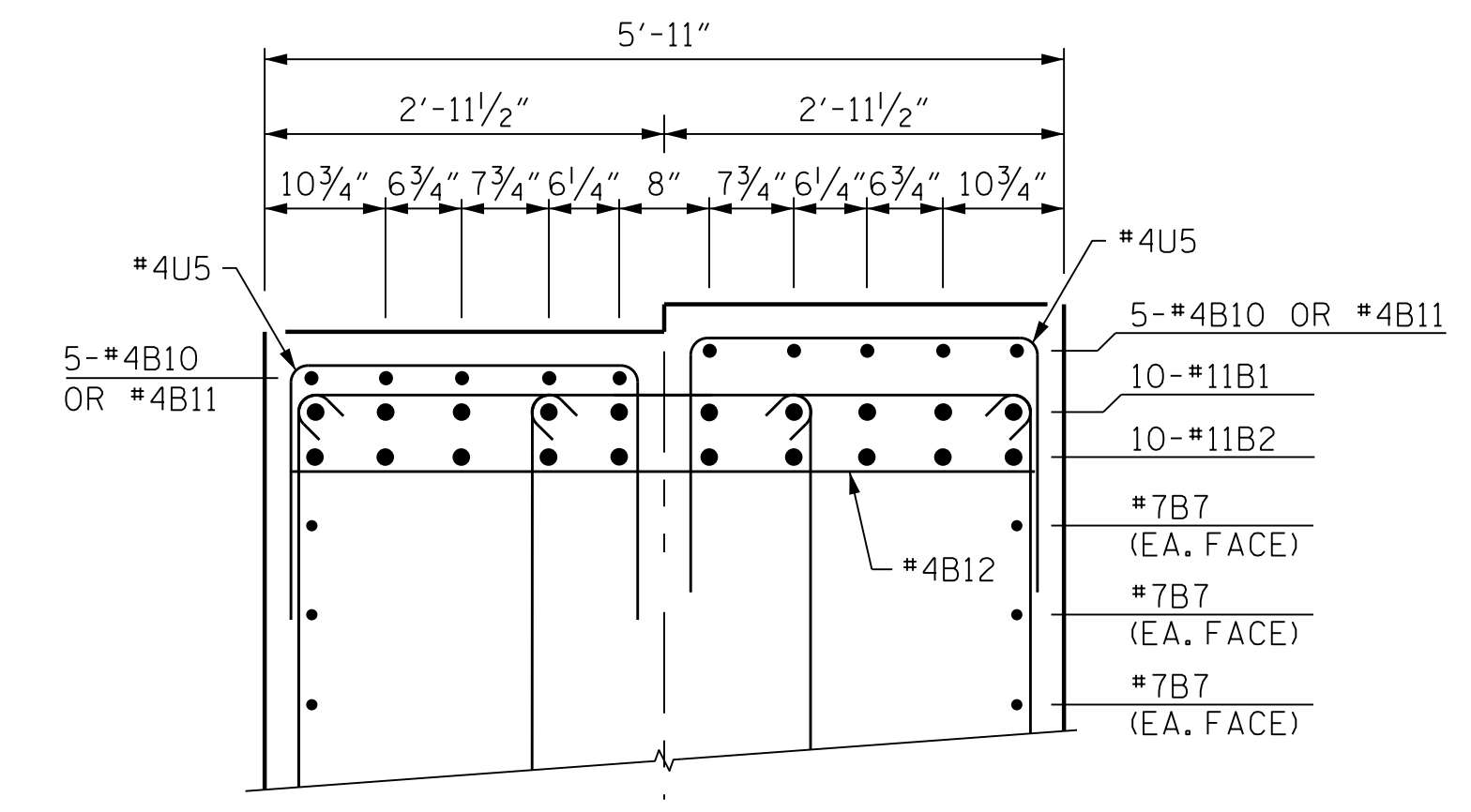
VIEW X-X

(NO STEP IN BENTS 20 & 21)



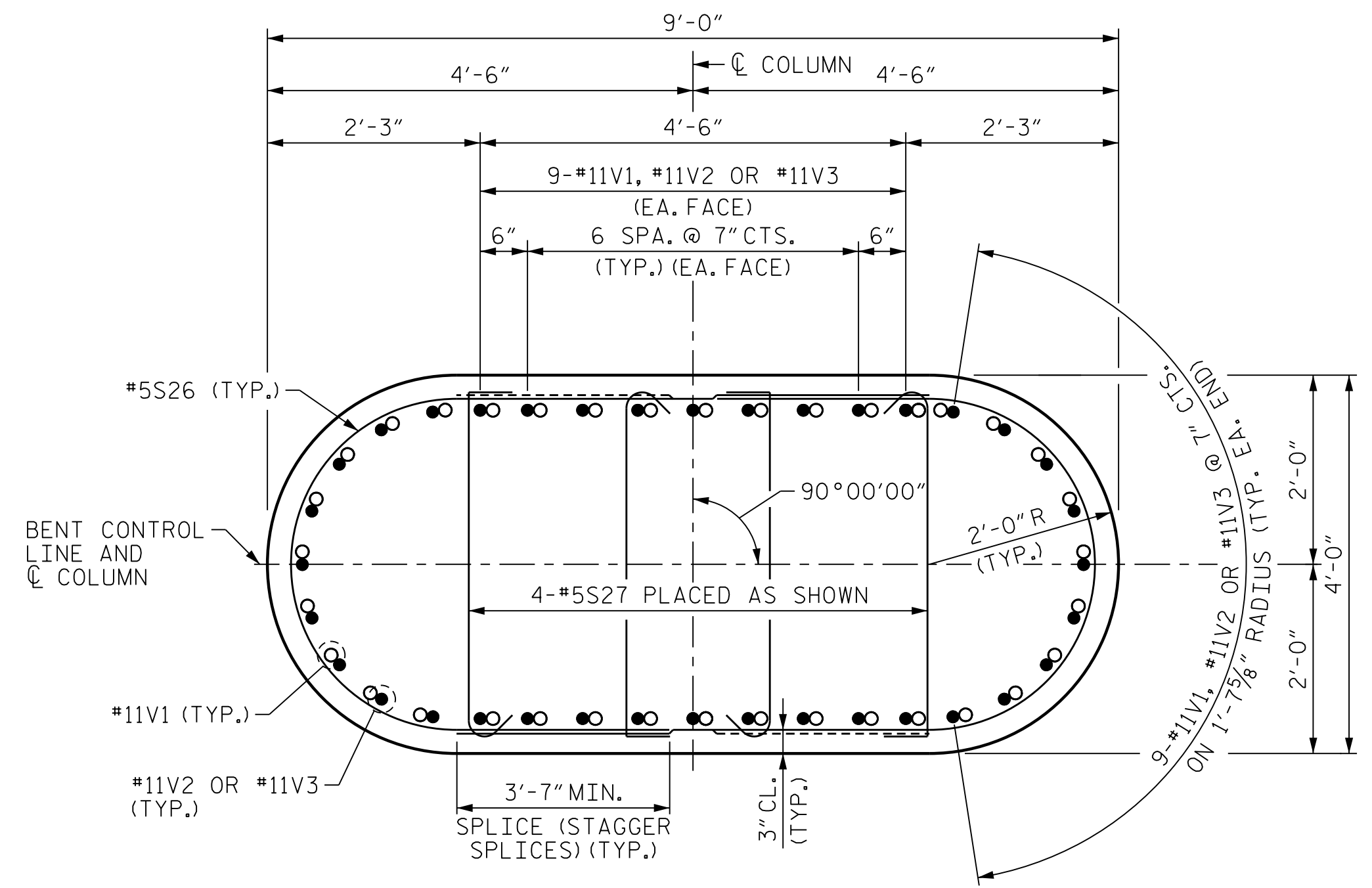
VIEW Y-Y

(NO STEP IN BENTS 20 & 21)



PARTIAL SECTION

(BENT 22)



SECTION D-D

WHEN PLACING #5S27 BARS, ALTERNATE THE POSITION OF THE 135° HOOK HORIZONTALLY AND VERTICALLY.
ALTERNATE DIRECTION OF #5S26 TO STAGGER LAPS.

NOTES:

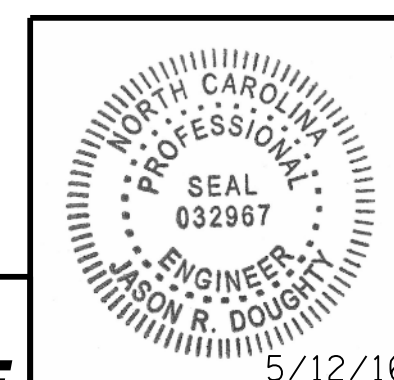
FOR NOTES, SEE SHEET 1 OF 5.

PROJECT NO. B-4929

PENDER COUNTY

STATION: 38+13.81 -L2-

SHEET 2 OF 5 STEEL ALTERNATE



PARSONS BRINCKERHOFF
434 FAYETTEVILLE STREET
SUITE 1500
RALEIGH, NC 27601
LICENSE NO. F-0165

DocuSigned by:
Jason R Doughty
00F1C86448274F7...

STATE OF NORTH CAROLINA
DEPARTMENT OF TRANSPORTATION
RALEIGH
SUBSTRUCTURE
BENTS 19 AND 22
SECTIONS AND DETAILS

REVISIONS						SHEET NO. S-275
NO.	BY:	DATE:	NO.	BY:	DATE:	
1			3			TOTAL SHEETS 278
2			4			

5/12/2016 401_127_B4929_SMU_IB19_2s.dgn

DESIGNED BY: J. BORUTA DATE: FEB 2016
DRAWN BY: MAH/KEW DATE: MAR 2016
CHECKED BY: J. DOUGHTY DATE: APR 2016
DESIGN ENGINEER OF RECORD: J. DOUGHTY DATE: MAY 2016