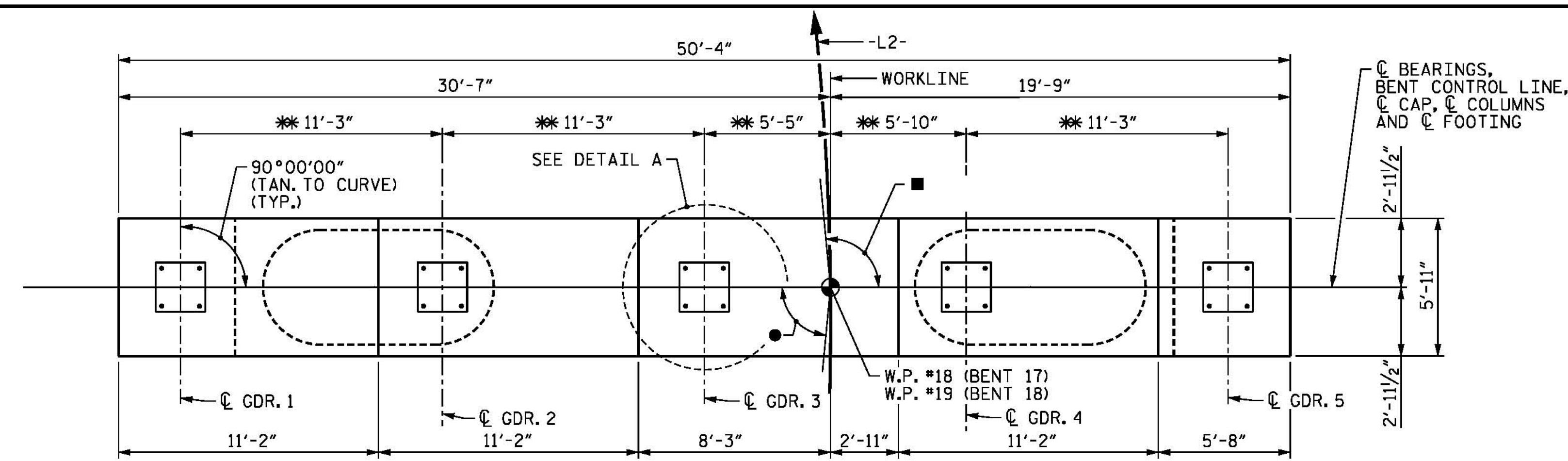


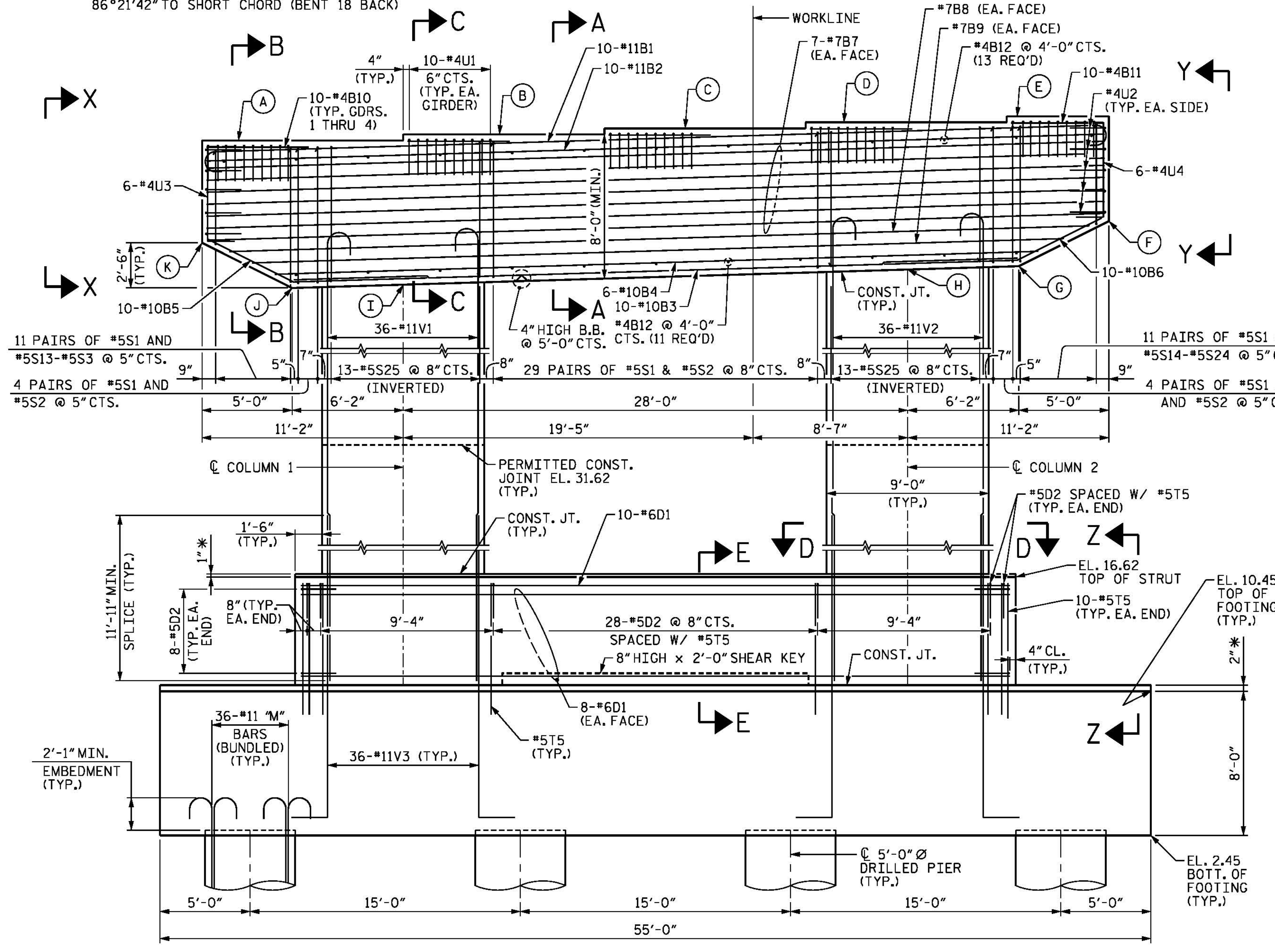
NOTES

STIRRUPS AND "U" BARS IN CAP MAY BE SHIFTED AS NECESSARY TO CLEAR ANCHOR BOLTS.
 HOOKS ON "V" AND "M" BARS MAY BE TURNED AS NECESSARY FOR PLACING REINFORCING STEEL.
 "T" BARS IN FOOTING MAY BE SHIFTED AS NECESSARY TO CLEAR COLUMN AND DRILLED PIER REINFORCEMENT.
 FOR FOUNDATION NOTES, SEE "FOUNDATION NOTES" SHEET.
 FOR SECTIONS AND VIEWS, SEE SHEET 2 OF 5 AND SHEET 3 OF 5.
 FOR FOOTING AND DRILLED PIER REINFORCING DETAILS, SEE SHEET 3 OF 5 AND SHEET 4 OF 5.
 * THE FOOTING AND STRUT ARE SLOPED TO DRAIN.
 ALL STEEL IN THE DRILLED PIERS IS INCLUDED IN THE PAY ITEMS FOR "EPOXY COATED REINFORCING STEEL" AND "EPOXY COATED SPIRAL COLUMN REINFORCING STEEL".
 THE CONTRACTOR'S ATTENTION IS CALLED TO THE FACT THAT THE LONGITUDINAL REINFORCEMENT FOR THE DRILLED PIERS IS DETAILED WITH 3 FEET OF EXTRA LENGTH.
 NO SEPARATE PAYMENT SHALL BE MADE FOR ANY ADDITIONAL STEEL REQUIRED IN CONSTRUCTION OF THE DRILLED PIER AS THIS IS CONSIDERED INCIDENTAL TO THE LINEAR FOOT PRICE FOR DRILLED PIER.
 FOR MASS CONCRETE, SEE SPECIAL PROVISIONS.



- 93°38'19" TO SHORT CHORD (BENT 17 AHEAD)
- 92°53'09" TO SHORT CHORD (BENT 18 AHEAD)
- 87°06'52" TO SHORT CHORD (BENT 17 BACK)
- 86°21'42" TO SHORT CHORD (BENT 18 BACK)

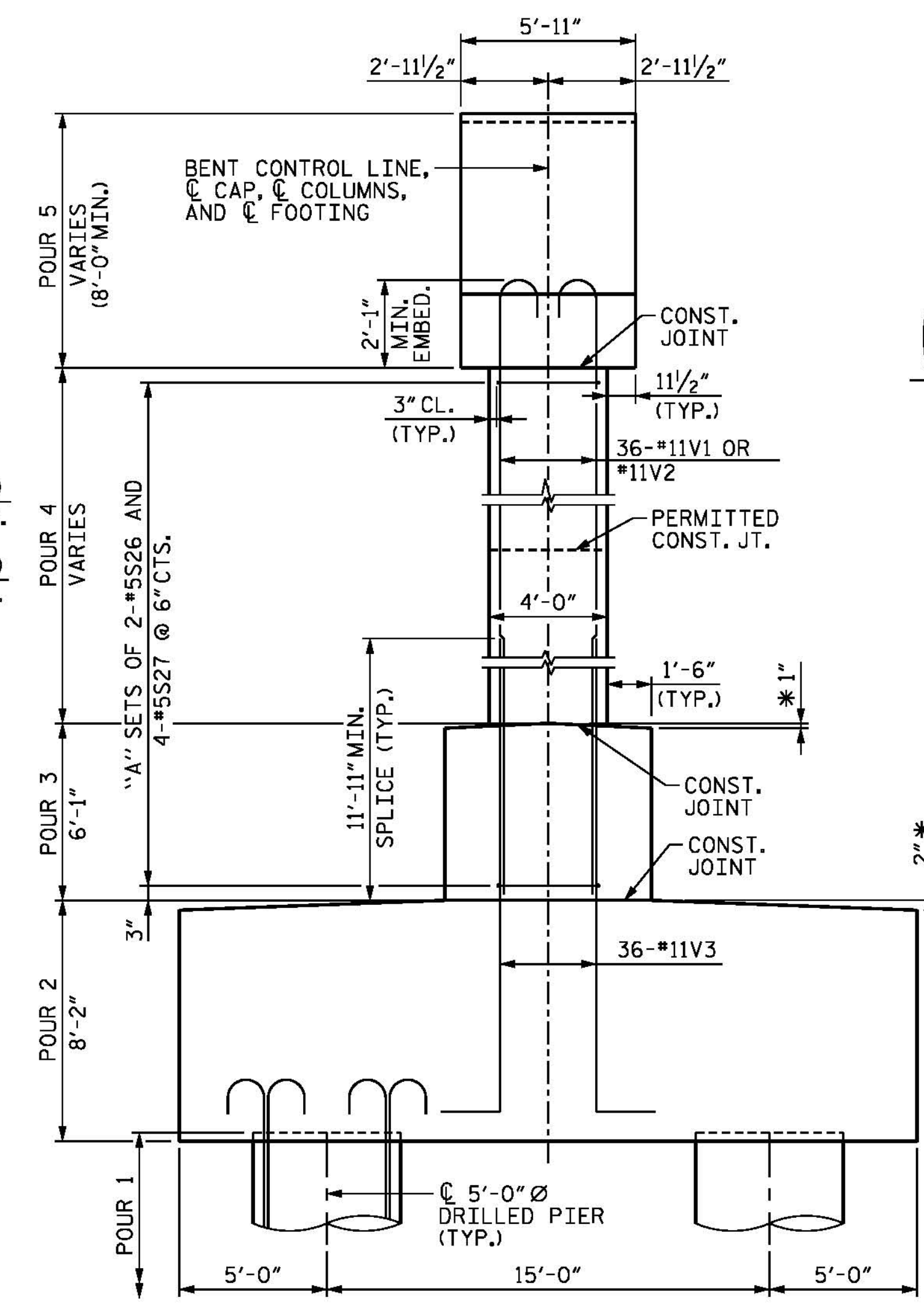
PLAN
 ** MEASURED ALONG BENT CONTROL LINE



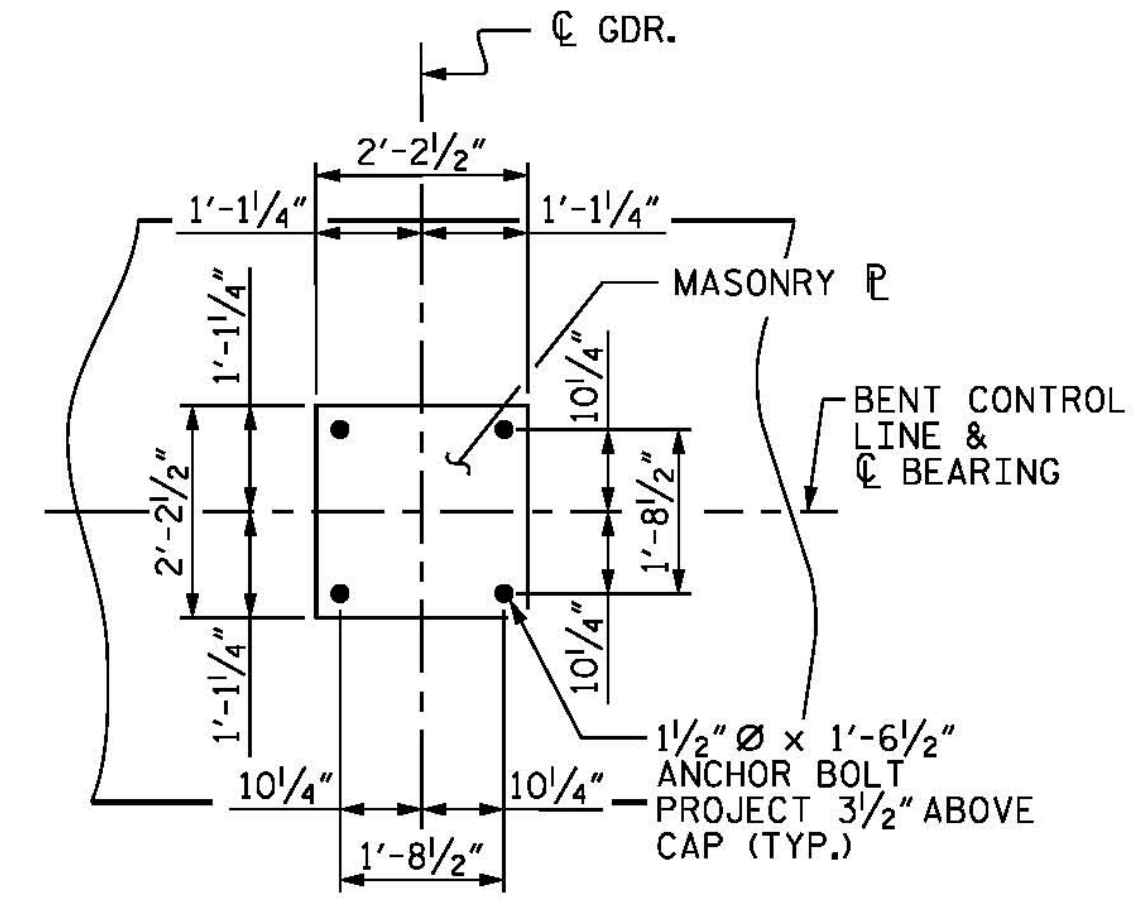
ELEVATION

FOOTING REINFORCEMENT NOT SHOWN FOR CLARITY, SEE SHEET 3 OF 5.

ELEVATION TABLE										
BENT	A	B	C	D	E	F	G	H	I	K
17	60.74	61.08	61.41	61.75	62.09	56.26	53.76	53.57	52.74	52.55
18	54.47	54.81	55.15	55.49	55.82	50.00	47.50	47.31	46.47	46.79



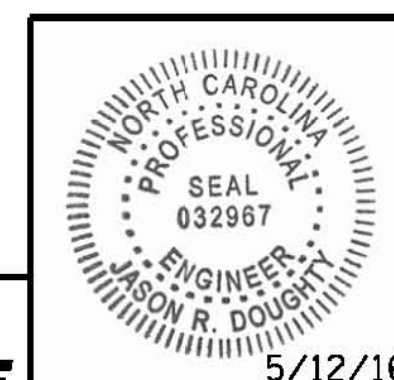
END VIEW



DETAIL A

BAR QUANTITY "A"	
BENT 17 COLUMN 1	84
BENT 17 COLUMN 2	85
BENT 18 COLUMN 1	71
BENT 18 COLUMN 2	73

PROJECT NO. B-4929
 PENDER COUNTY
 STATION: 38+13.81 -L2-
 SHEET 1 OF 5 STEEL ALTERNATE



PARSONS BRINCKERHOFF
 434 FAYETTEVILLE STREET
 SUITE 1500
 RALEIGH, NC 27601
 LICENSE NO. P-0165

DocuSigned by:
 Jason R. Doughty

STATE OF NORTH CAROLINA
 DEPARTMENT OF TRANSPORTATION
 RALEIGH
 SUBSTRUCTURE
BENTS 17 AND 18
 PLAN AND ELEVATION

REVISIONS						SHEET NO.
NO.	BY:	DATE:	NO.	BY:	DATE:	S-269
1			3			TOTAL SHEETS 278
2			4			

DOCUMENT NOT CONSIDERED FINAL UNLESS ALL SIGNATURES COMPLETED

5/12/2016 401.115.B4929_SMU_IB17_Is.dgn

DESIGNED BY: E. ULLMER DATE: FEB 2016
 DRAWN BY: M. HOBBS DATE: MAR 2016
 CHECKED BY: B. LOFLIN DATE: MAY 2016
 DESIGN ENGINEER OF RECORD: J. DOUGHTY DATE: MAY 2016