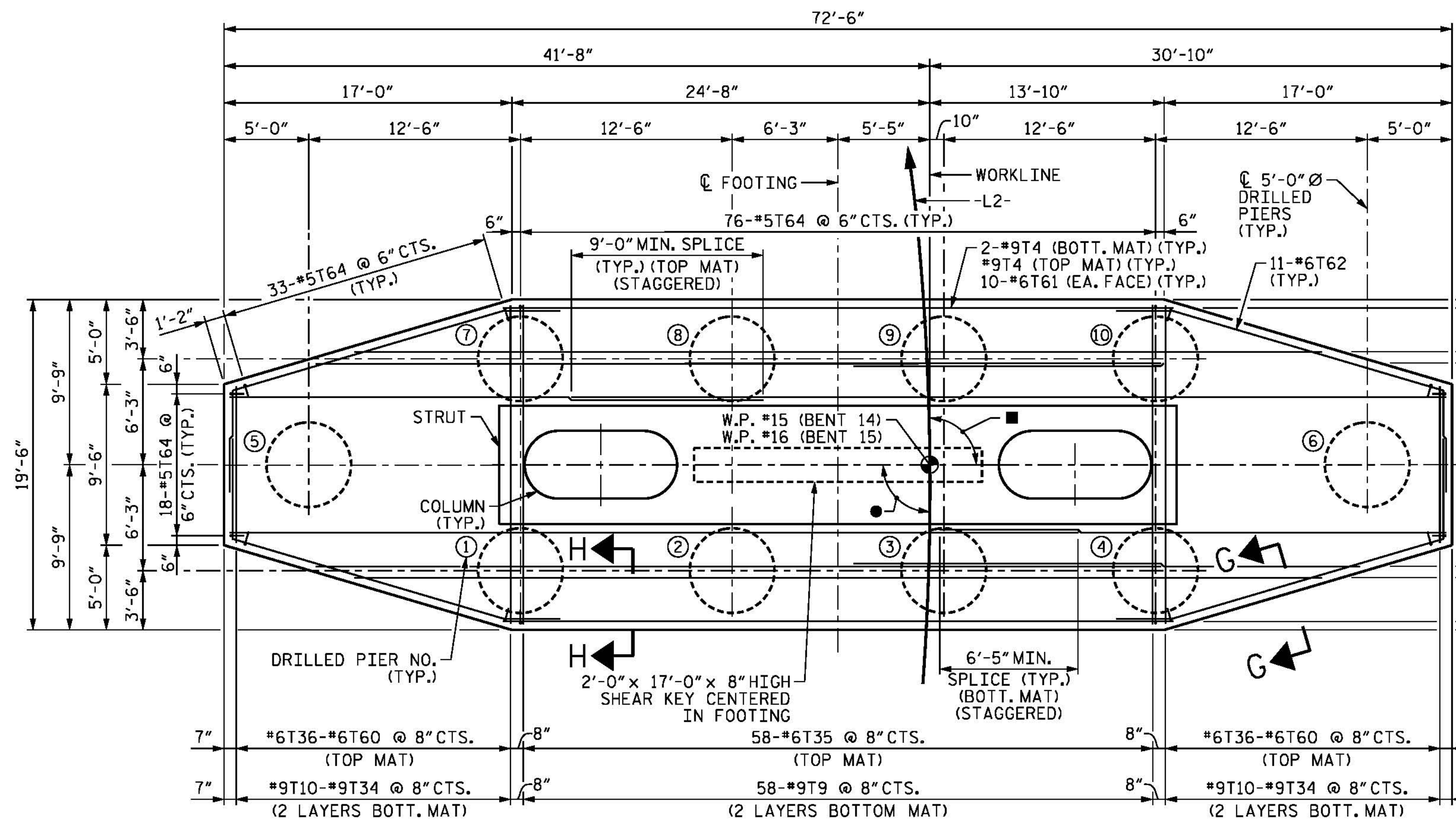


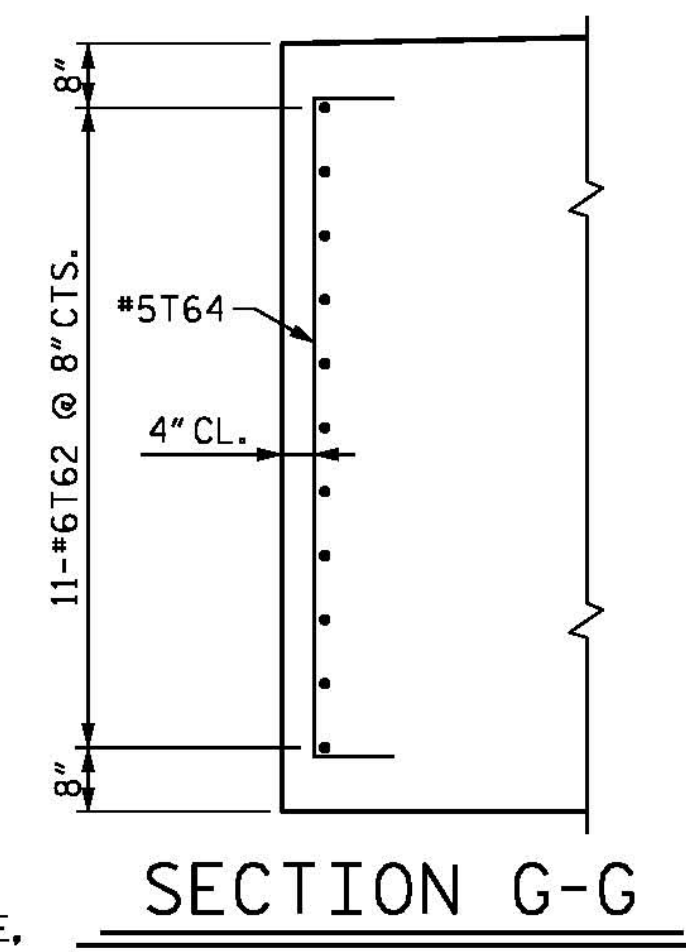
NOTES

FOR NOTES, SEE SHEET 1 OF 5.

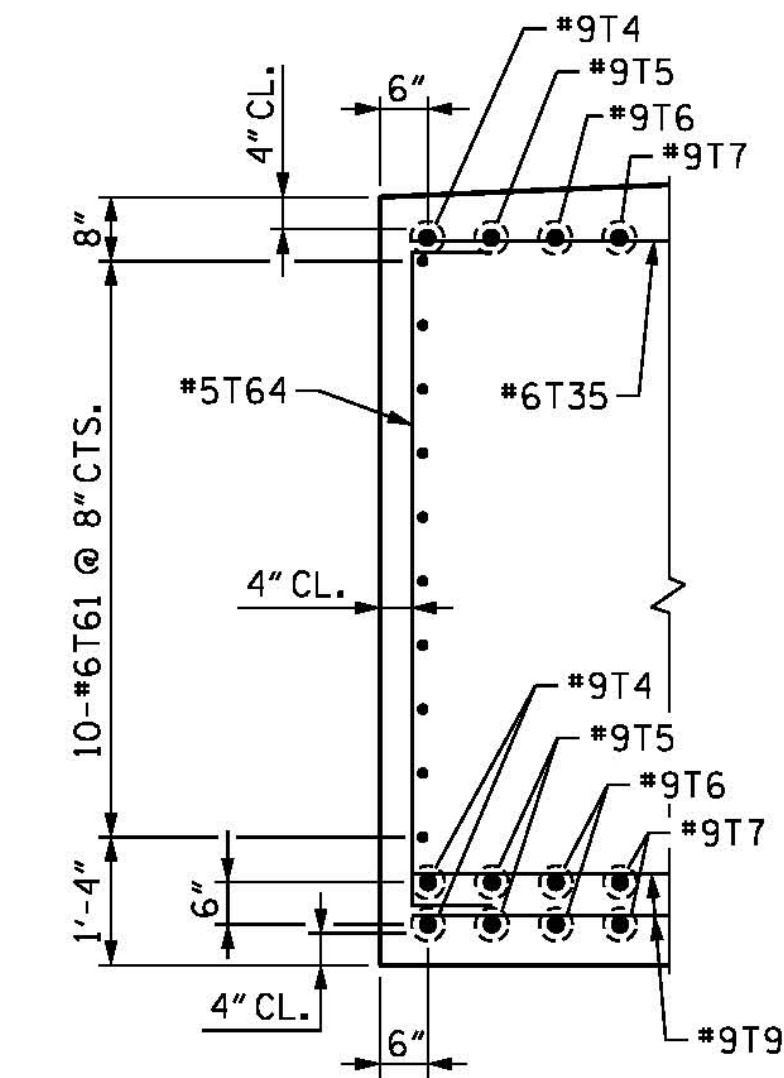


FOOTING PLAN

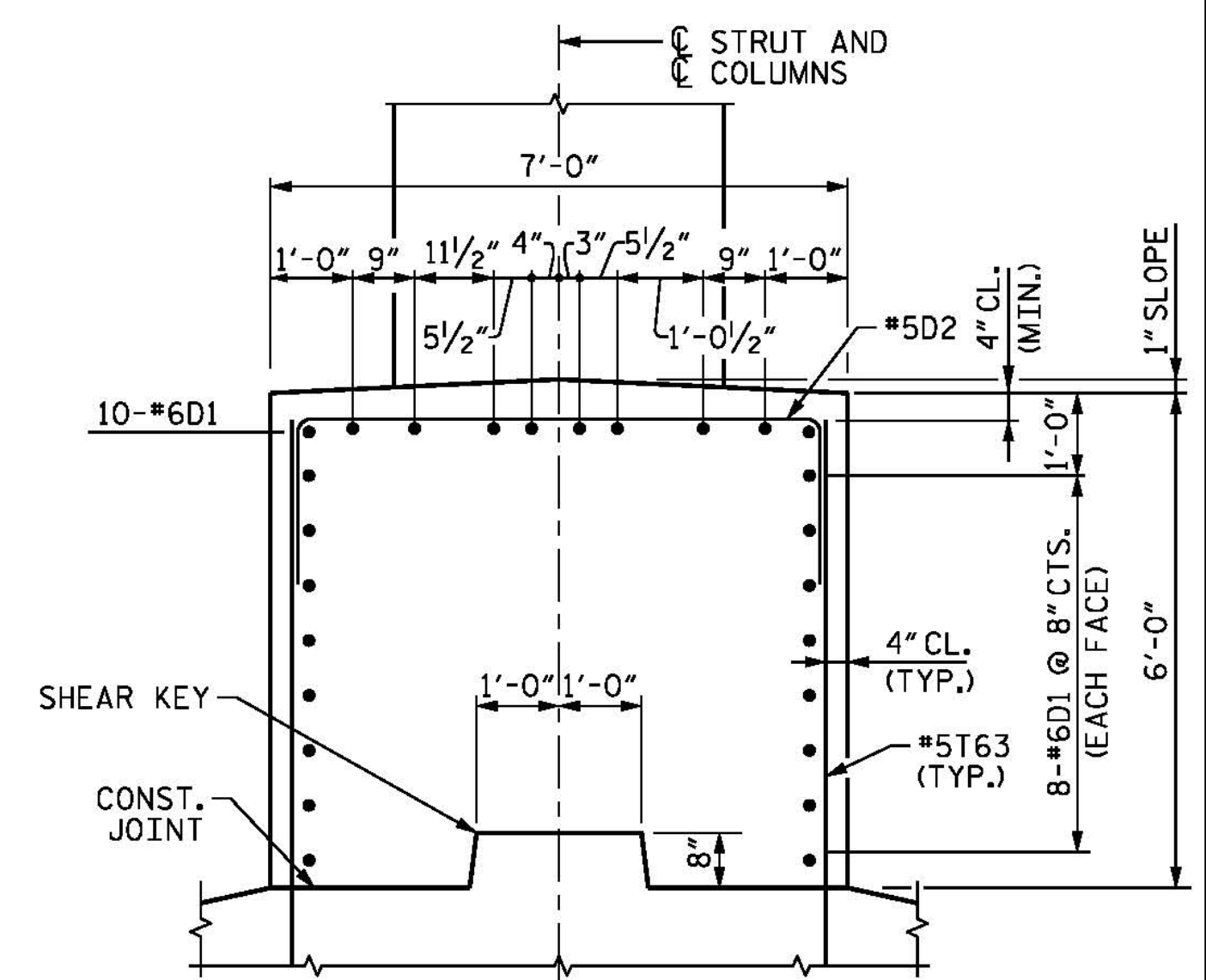
- 93°38'19" TO SHORT CHORD (BENT 14 AHEAD)
- 92°53'09" TO SHORT CHORD (BENT 15 AHEAD)
- 87°06'52" TO SHORT CHORD (BENT 14 BACK)
- 86°21'42" TO SHORT CHORD (BENT 15 BACK)



SECTION G-G

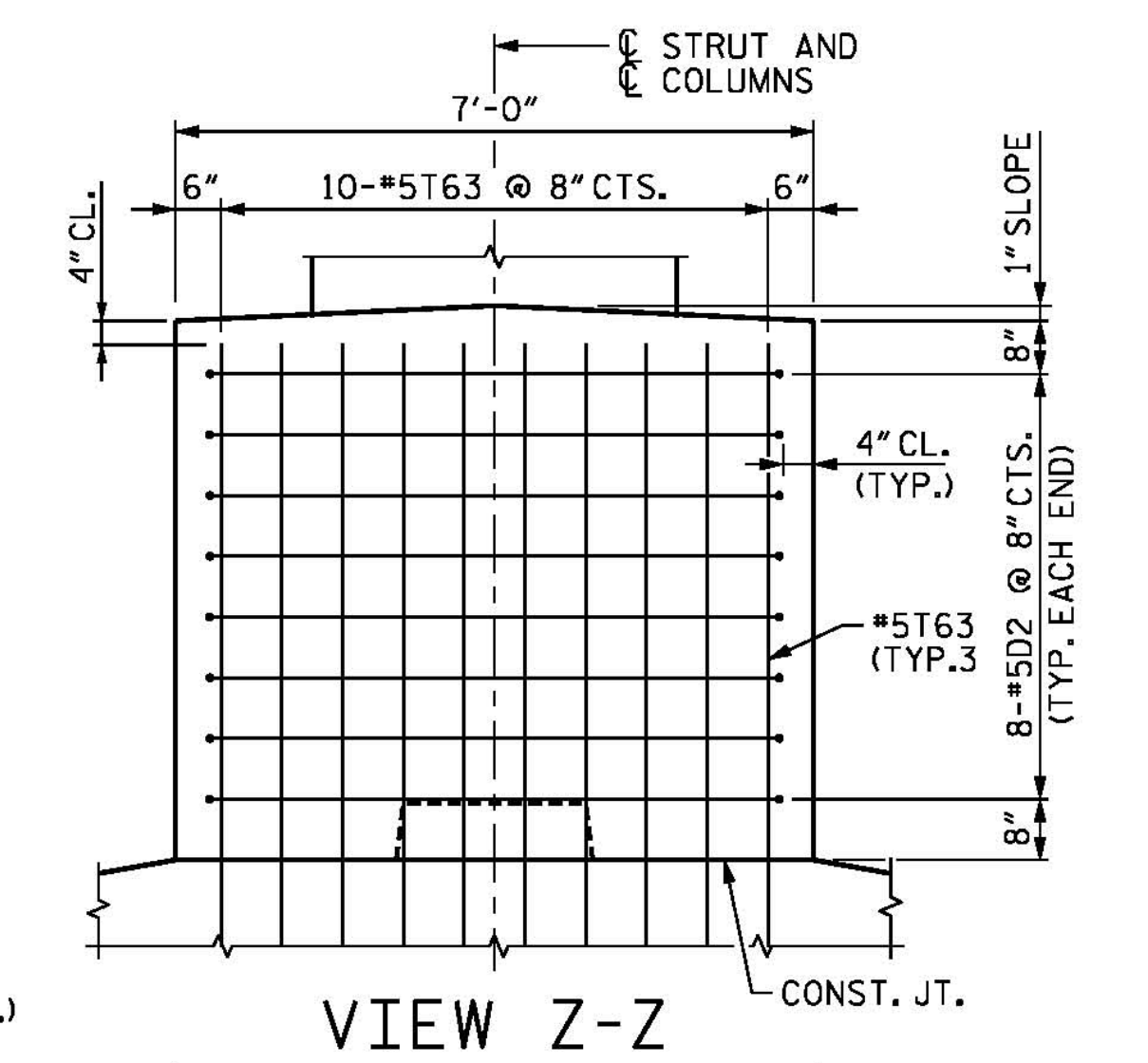


SECTION H-H

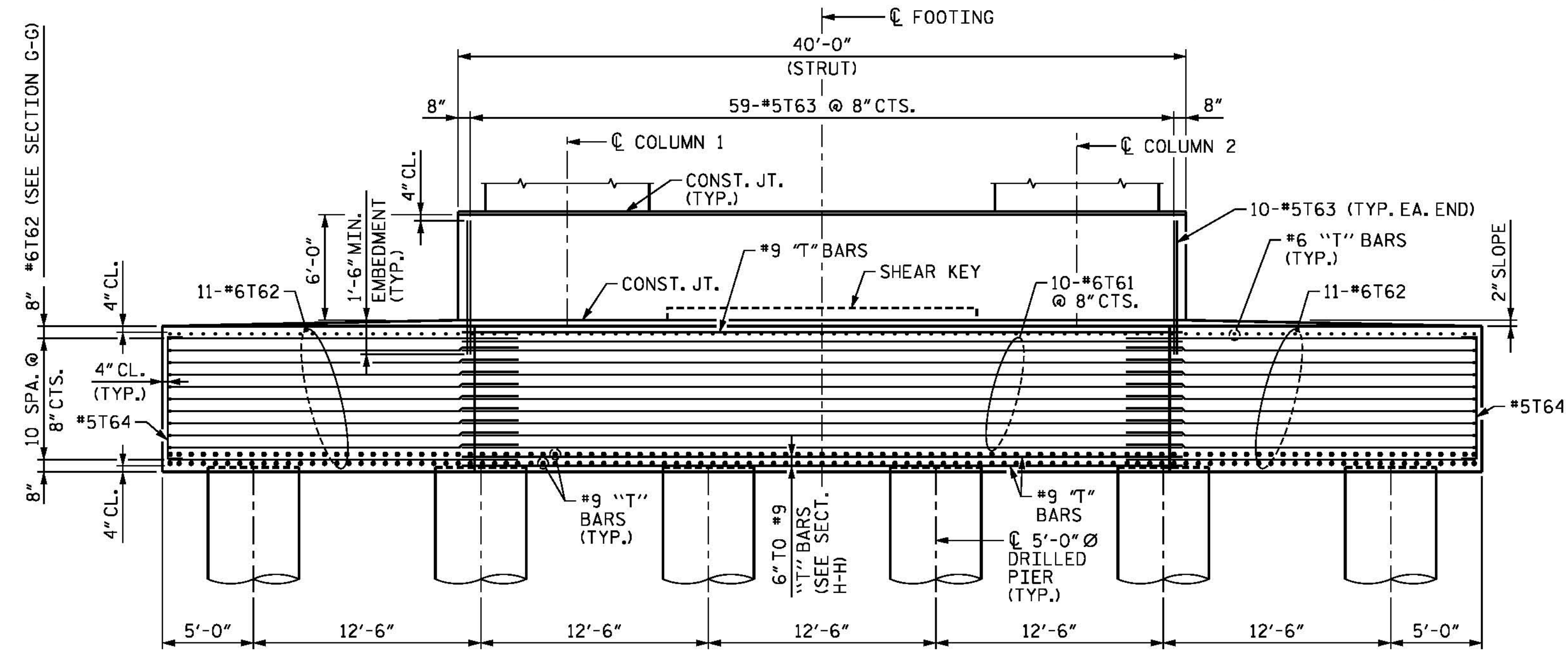


SECTION F-F

BARS MAY BE SHIFTED SLIGHTLY, AS NECESSARY, TO CLEAR COLUMN REINFORCING.

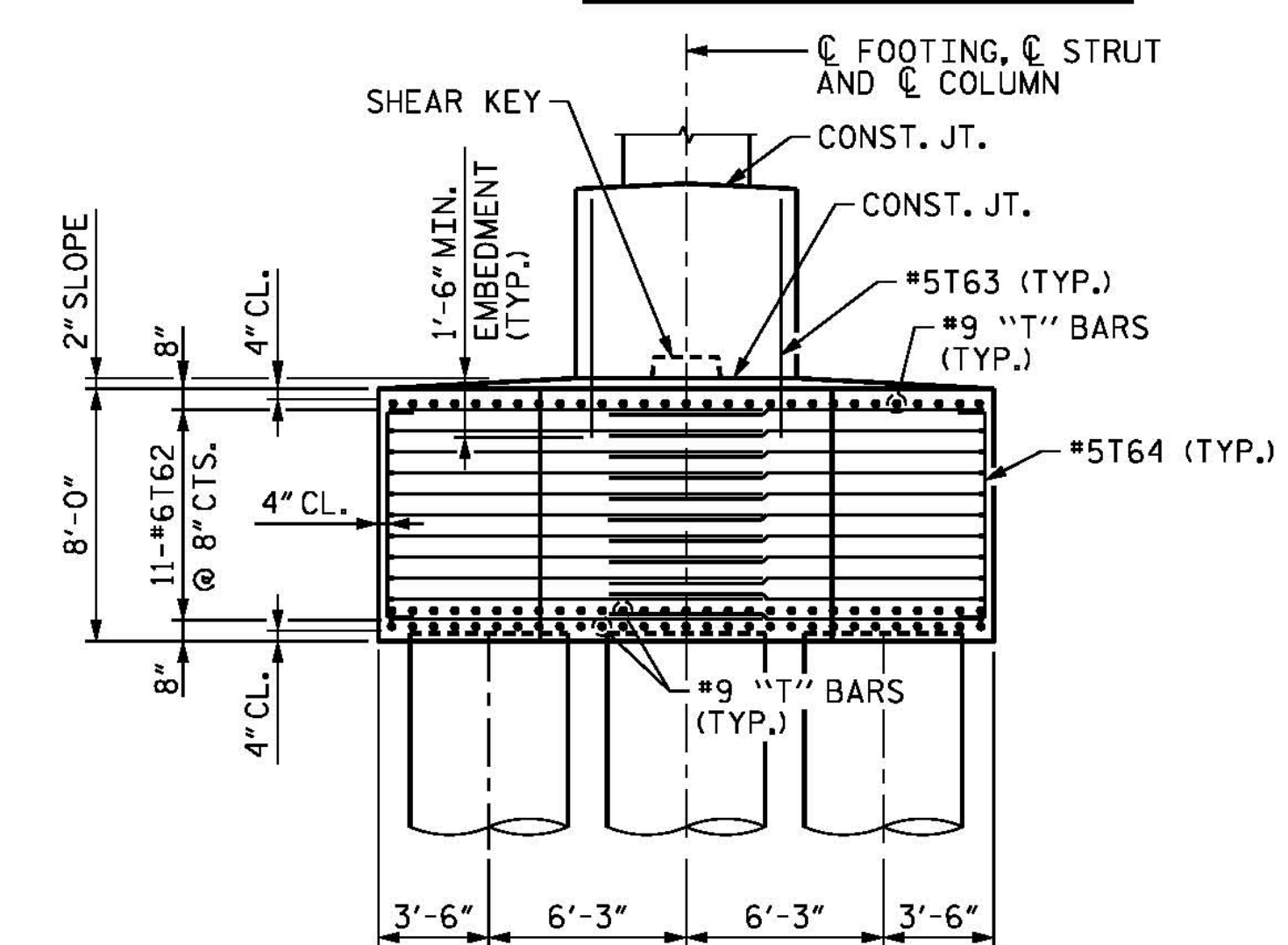


VIEW Z-Z



FOOTING AND STRUT ELEVATION

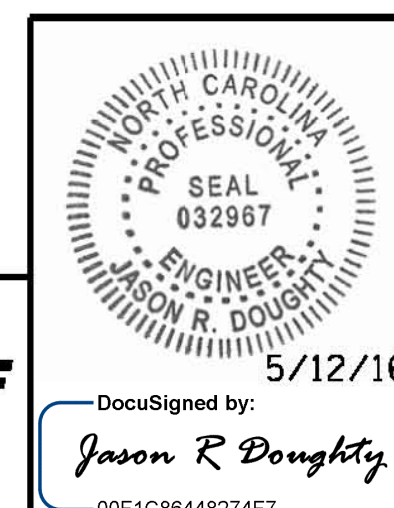
COLUMN AND STRUT REINFORCEMENT NOT SHOWN FOR CLARITY, SEE SHEETS 1 OF 5 AND 2 OF 5.



SIDE ELEVATION

COLUMN AND STRUT REINFORCEMENT NOT SHOWN FOR CLARITY, SEE SHEETS 1 OF 5 AND 2 OF 5.

PROJECT NO. B-4929
PENDER COUNTY
 STATION: 38+13.81 -L2-
 SHEET 3 OF 5 STEEL ALTERNATE



PARSONS BRINCKERHOFF
 434 FAYETTEVILLE STREET
 SUITE 1500
 RALEIGH, NC 27601
 LICENSE NO. F-0165

DocuSigned by:
Jason R. Doughty
 00F1C86448274F7...

STATE OF NORTH CAROLINA
 DEPARTMENT OF TRANSPORTATION
 RALEIGH
 SUBSTRUCTURE
**BENTS 14 AND 15
 FOOTING DETAILS**

REVISIONS					
NO.	BY:	DATE:	NO.	BY:	DATE:
1			3		
2			4		

SHEET NO.
S-266
 TOTAL SHEETS
 278

DESIGNED BY: E. ULLMER DATE: FEB 2016
 DRAWN BY: M. HOBBS DATE: MAR 2016
 CHECKED BY: B. LOFLIN DATE: APR 2016
 DESIGN ENGINEER OF RECORD: J. DOUGHTY DATE: MAY 2016

**DOCUMENT NOT CONSIDERED FINAL
 UNLESS ALL SIGNATURES COMPLETED**

5/12/2016 401_109_B4929_SMJ_IB14_3s.dgn