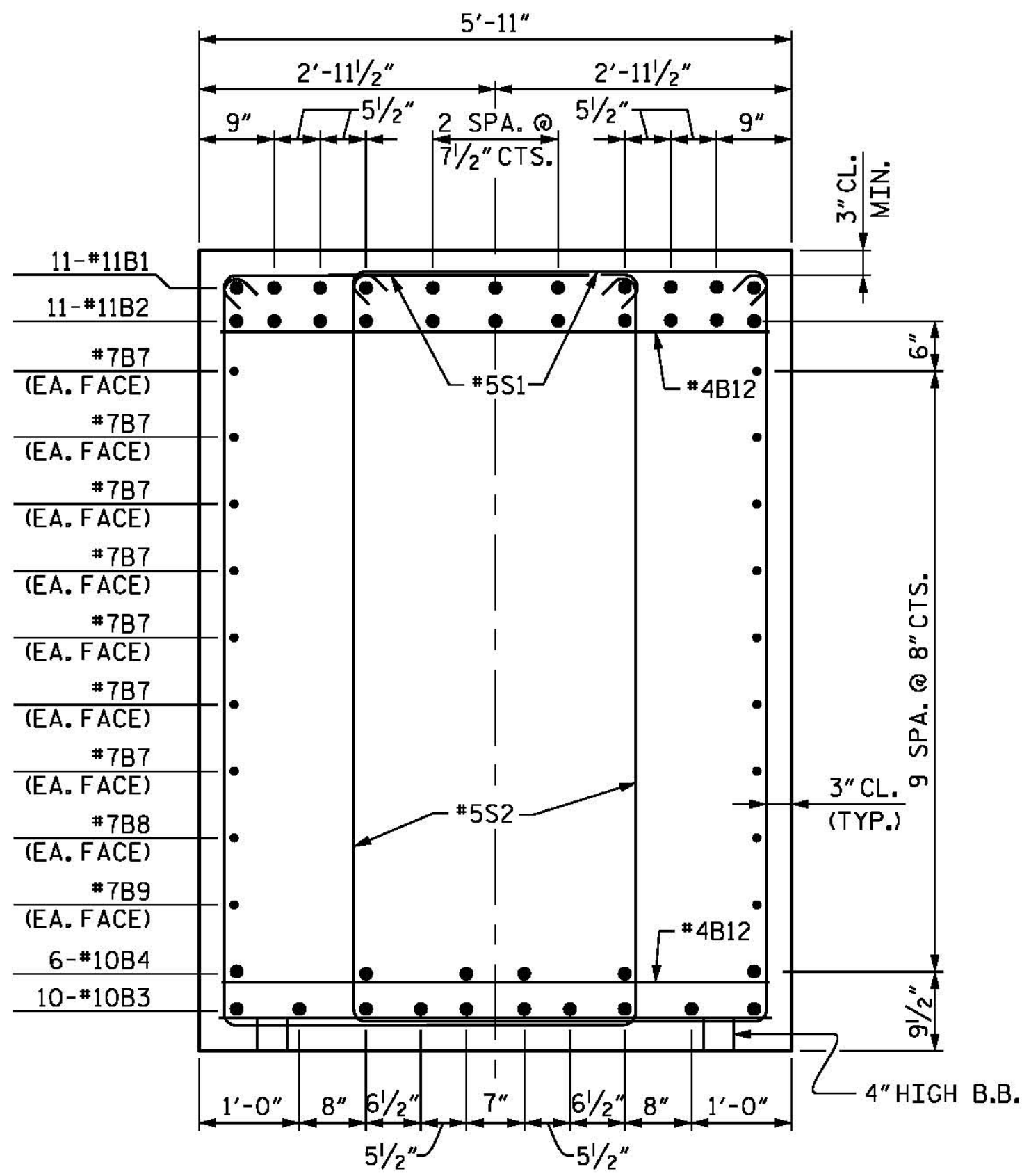
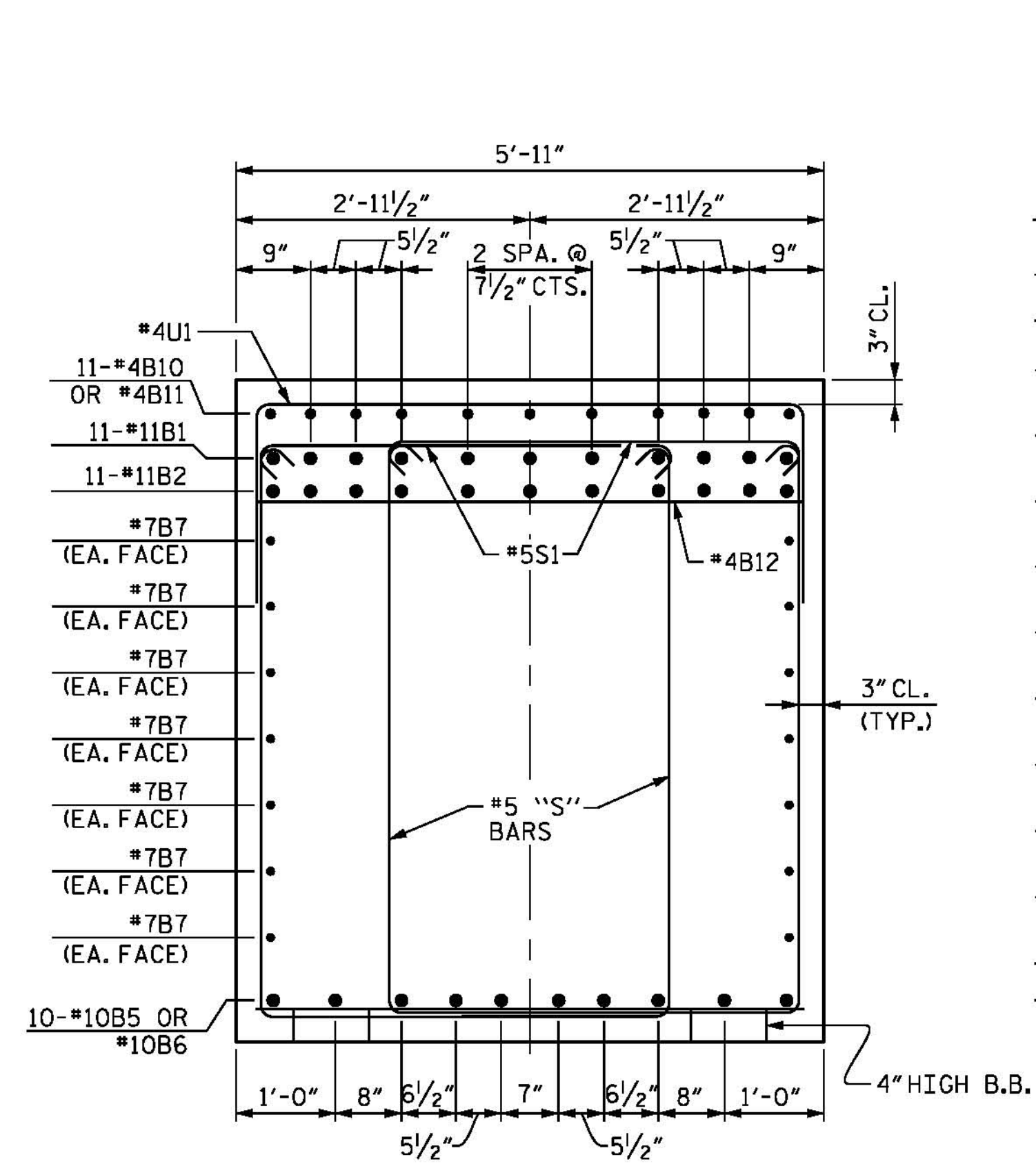


NOTES

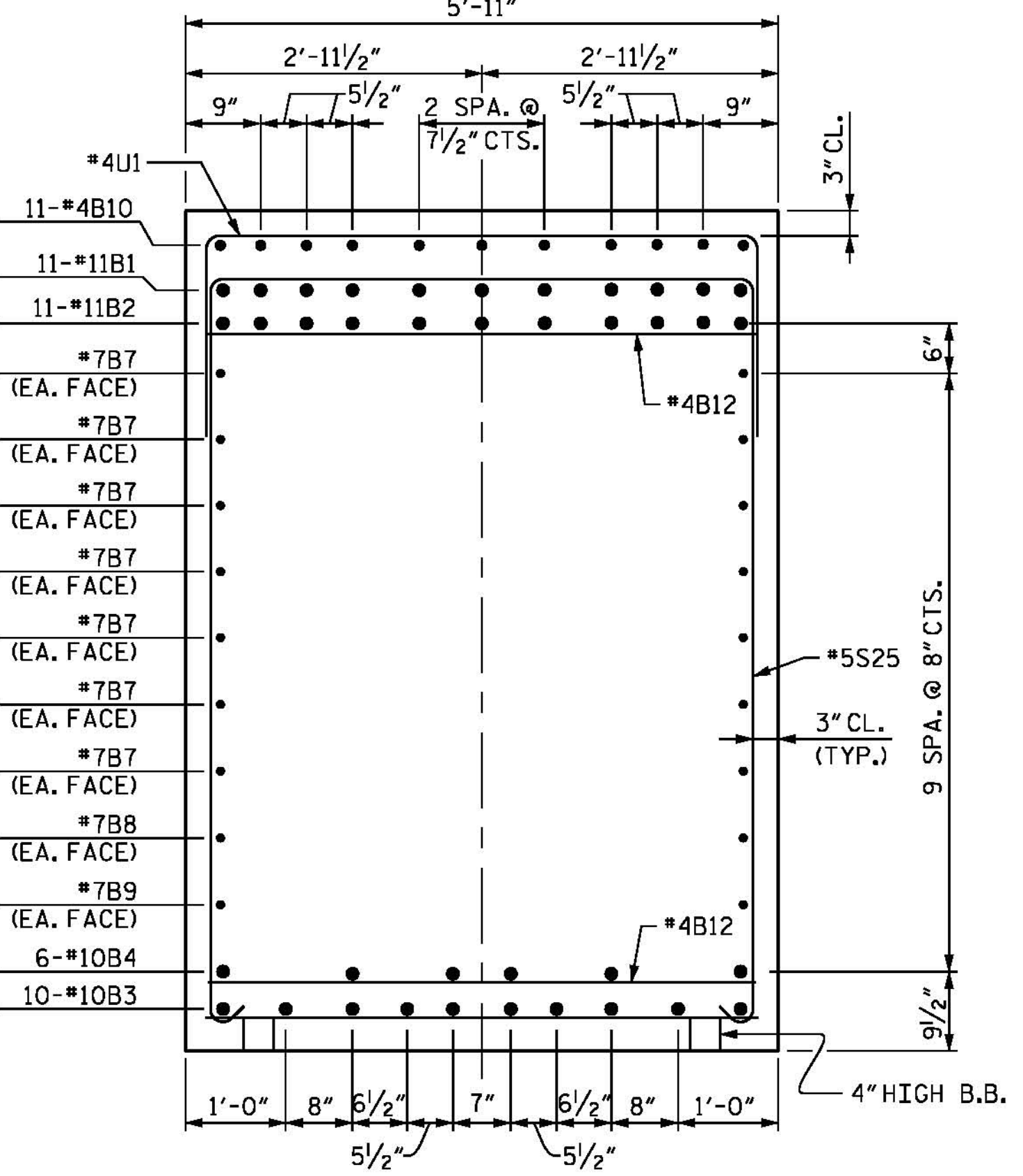
FOR NOTES, SEE SHEET 1 OF 5.



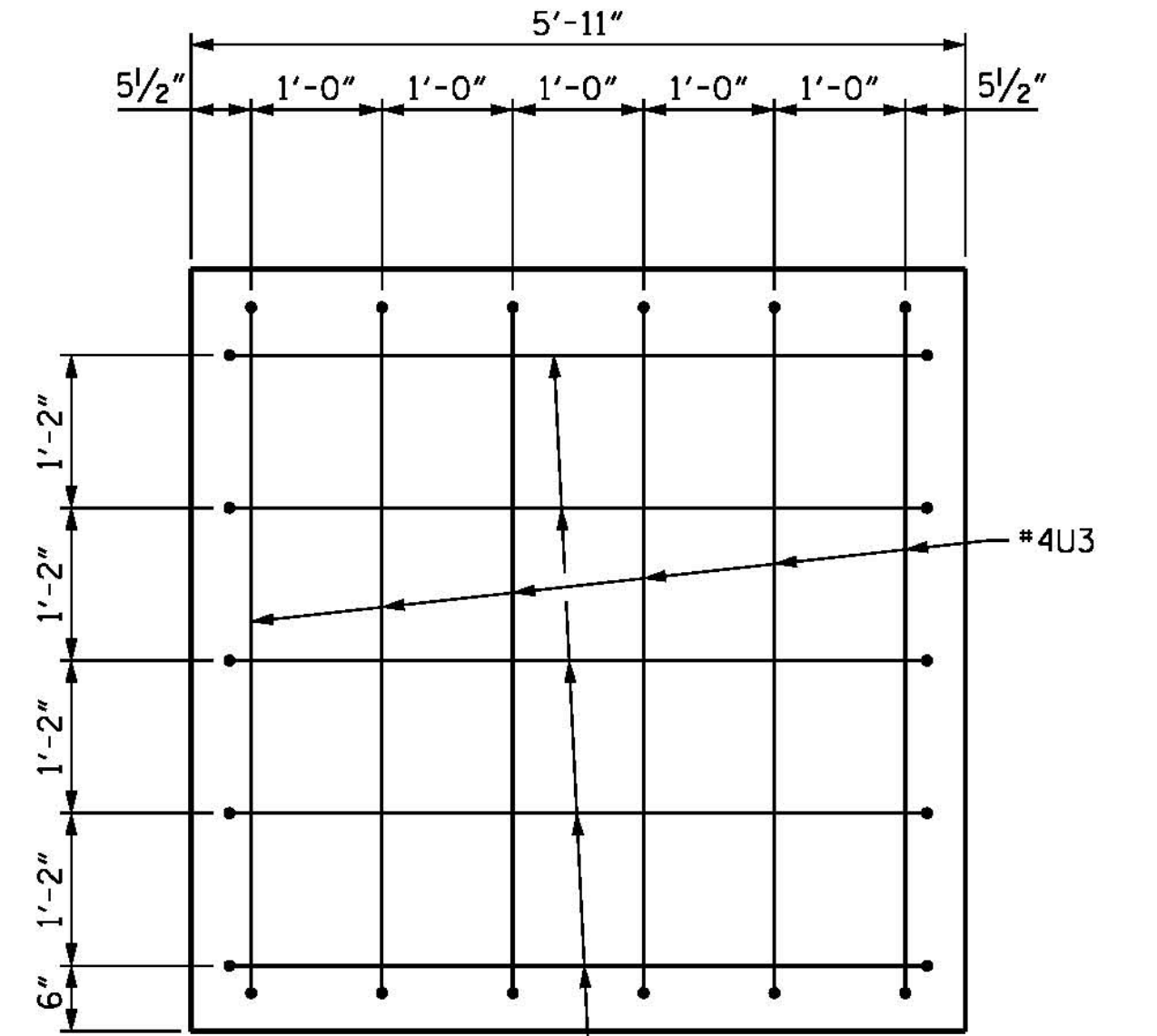
SECTION A-A



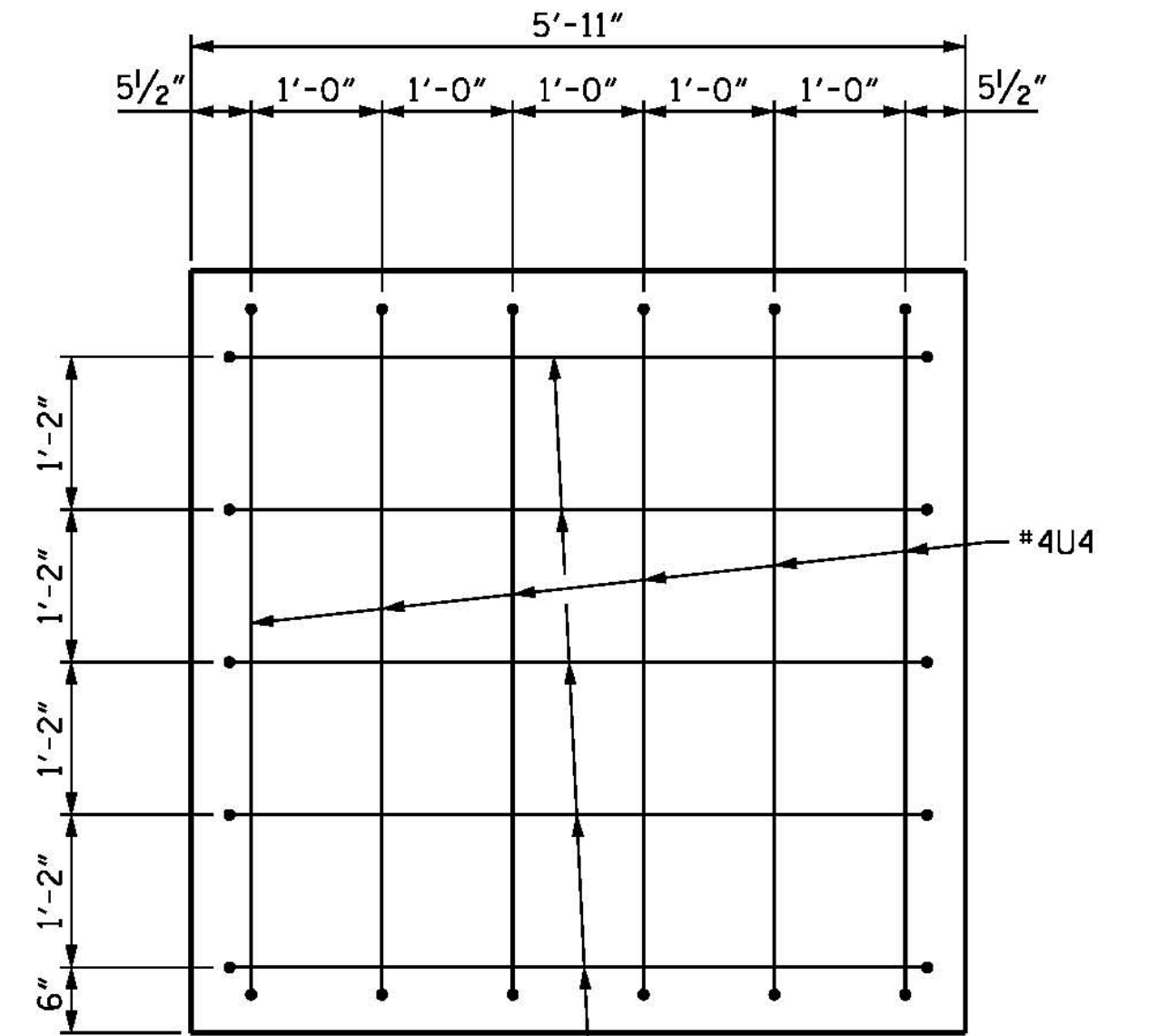
SECTION B-B



SECTION C-C

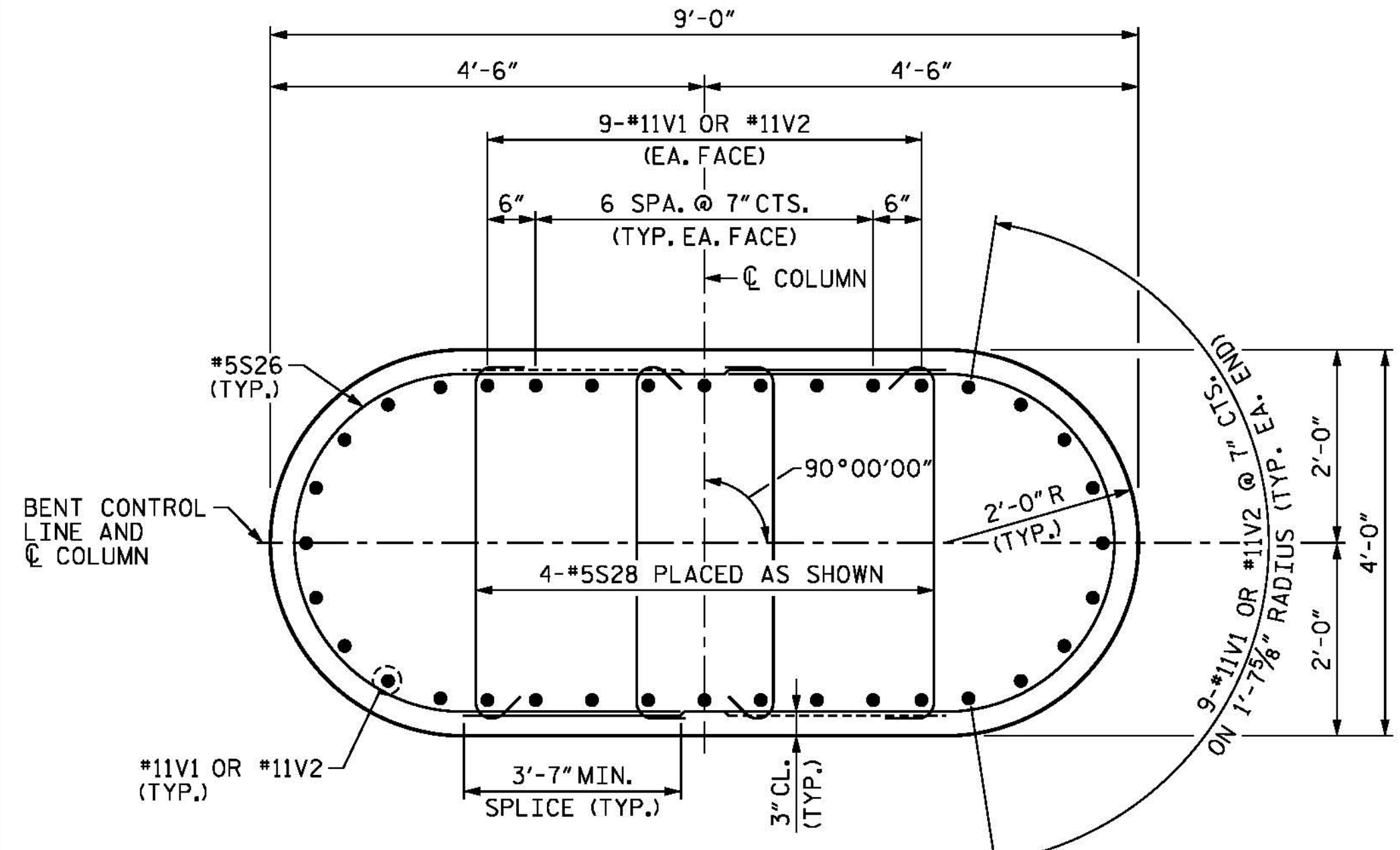


VIEW X-X



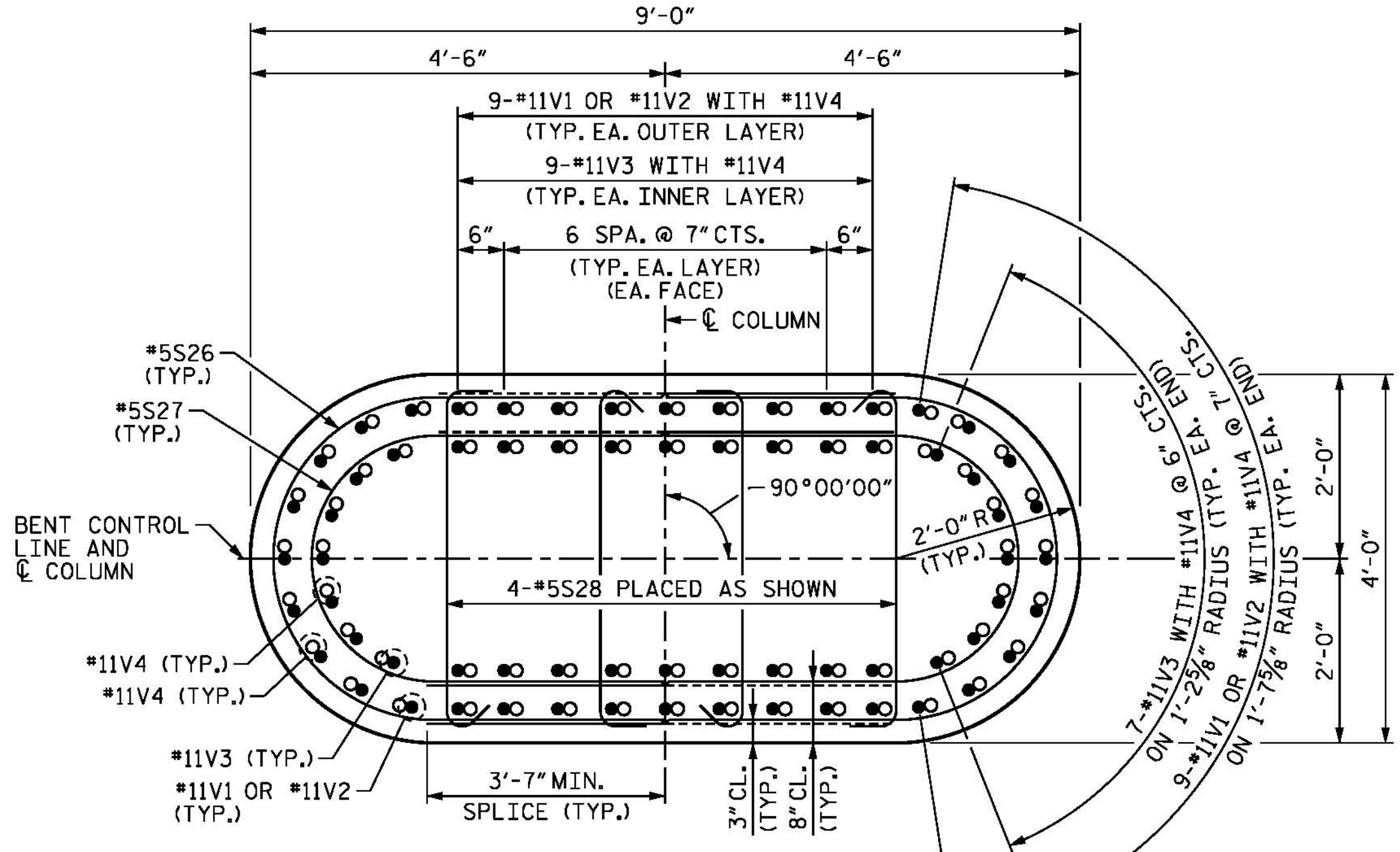
VIEW Y-Y

PROJECT NO. B-4929
PENDER COUNTY
 STATION: 38+13.81 -L2-
 SHEET 2 OF 5 STEEL ALTERNATE



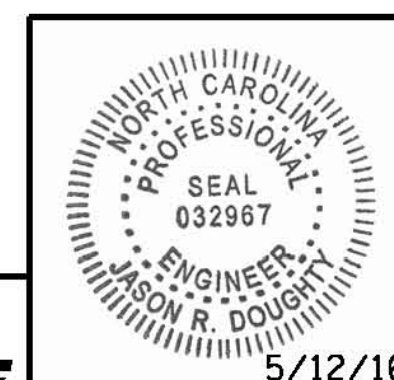
SECTION D-D

WHEN PLACING #5S28 BARS, ALTERNATE THE POSITION OF THE 135° HOOK HORIZONTALLY AND VERTICALLY.
 ALTERNATE DIRECTION OF #5S26 TO STAGGER LAPS.



SECTION E-E

WHEN PLACING #5S28 BARS, ALTERNATE THE POSITION OF THE 135° HOOK HORIZONTALLY AND VERTICALLY.
 ALTERNATE DIRECTION OF #5S26 AND #5S27 TO STAGGER LAPS.



DocuSigned by:
 Jason R. Doughty
 00F1C8B448274F7...

PARSONS BRINCKERHOFF
 434 FAYETTEVILLE STREET
 SUITE 1500
 RALEIGH, NC 27601
 LICENSE NO. F-0165

DOCUMENT NOT CONSIDERED FINAL
 UNLESS ALL SIGNATURES COMPLETED

STATE OF NORTH CAROLINA DEPARTMENT OF TRANSPORTATION RALEIGH					
SUBSTRUCTURE					
BENTS 14 AND 15 SECTIONS AND DETAILS					
REVISIONS					
NO.	BY:	DATE:	NO.	BY:	DATE:
1			3		
2			4		

SHEET NO. **S-265**
 TOTAL SHEETS 278

5/12/2016
 401.107_B4929_SMJ_IB14_2s.dgn

DESIGNED BY: E. ULLMER DATE: FEB 2016
 DRAWN BY: M. HOBBS DATE: MAR 2016
 CHECKED BY: B. LOFLIN DATE: APR 2016
 DESIGN ENGINEER OF RECORD: J. DOUGHTY DATE: MAY 2016