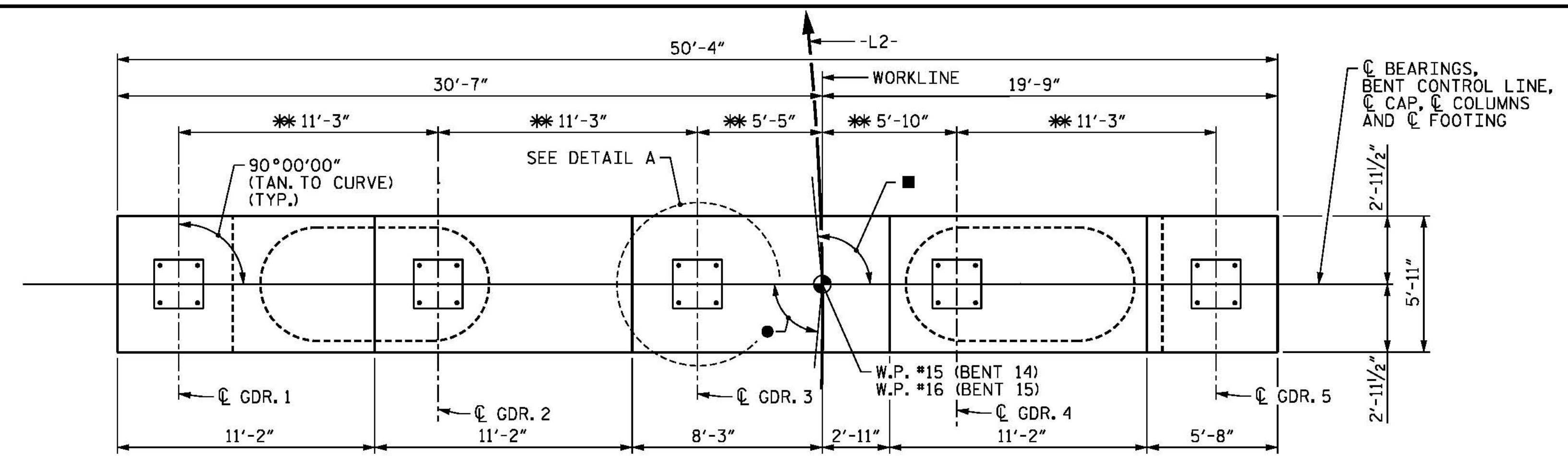


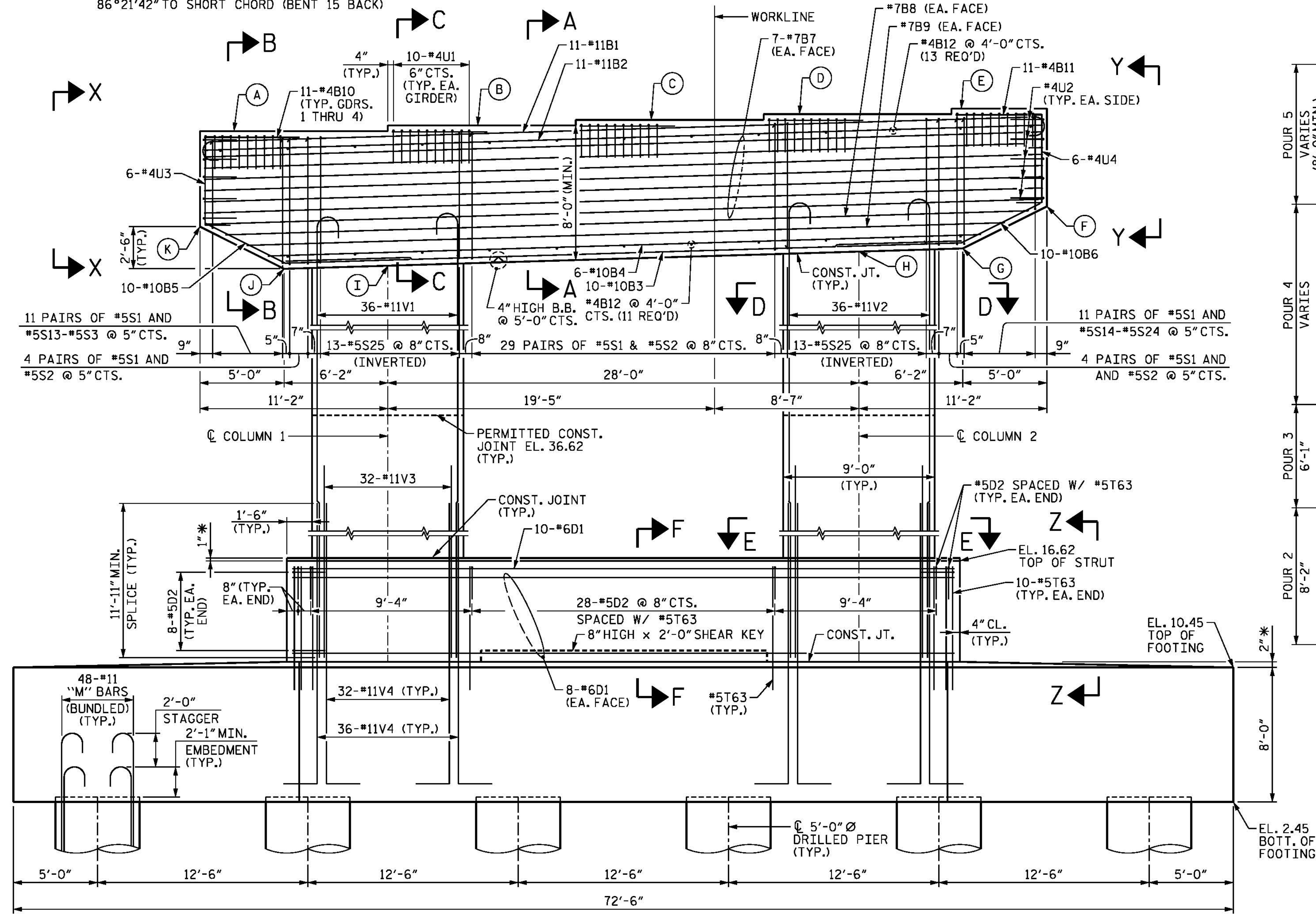
NOTES

- STIRRUPS AND "U" BARS IN CAP MAY BE SHIFTED AS NECESSARY TO CLEAR ANCHOR BOLTS.
- HOOKS ON "V" AND "M" BARS MAY BE TURNED AS NECESSARY FOR PLACING REINFORCING STEEL.
- "T" BARS IN FOOTING MAY BE SHIFTED AS NECESSARY TO CLEAR COLUMN AND DRILLED PIER REINFORCEMENT.
- FOR FOUNDATION NOTES, SEE "FOUNDATION NOTES" SHEET.
- FOR SECTIONS AND VIEWS, SEE SHEET 2 OF 5 AND SHEET 3 OF 5.
- FOR FOOTING AND DRILLED PIER REINFORCING DETAILS, SEE SHEET 3 OF 5 AND SHEET 4 OF 5.
- * THE FOOTING AND STRUT ARE SLOPED TO DRAIN.
- ALL STEEL IN THE DRILLED PIERS IS INCLUDED IN THE PAY ITEMS FOR "EPOXY COATED REINFORCING STEEL" AND "EPOXY COATED SPIRAL COLUMN REINFORCING STEEL".
- THE CONTRACTOR'S ATTENTION IS CALLED TO THE FACT THAT THE LONGITUDINAL REINFORCEMENT FOR THE DRILLED PIERS IS DETAILED WITH 3 FEET OF EXTRA LENGTH.
- NO SEPARATE PAYMENT SHALL BE MADE FOR ANY ADDITIONAL STEEL REQUIRED IN CONSTRUCTION OF THE DRILLED PIER AS THIS IS CONSIDERED INCIDENTAL TO THE LINEAR FOOT PRICE FOR DRILLED PIER.
- FOR MASS CONCRETE, SEE SPECIAL PROVISIONS.
- PLASTIC LUMBER FENDER SYSTEM IS REQUIRED AT BENTS 14 AND 15 BUT IS NOT SHOWN. SEE "PLASTIC LUMBER FENDERING SYSTEM" SHEET FOR DETAILS.



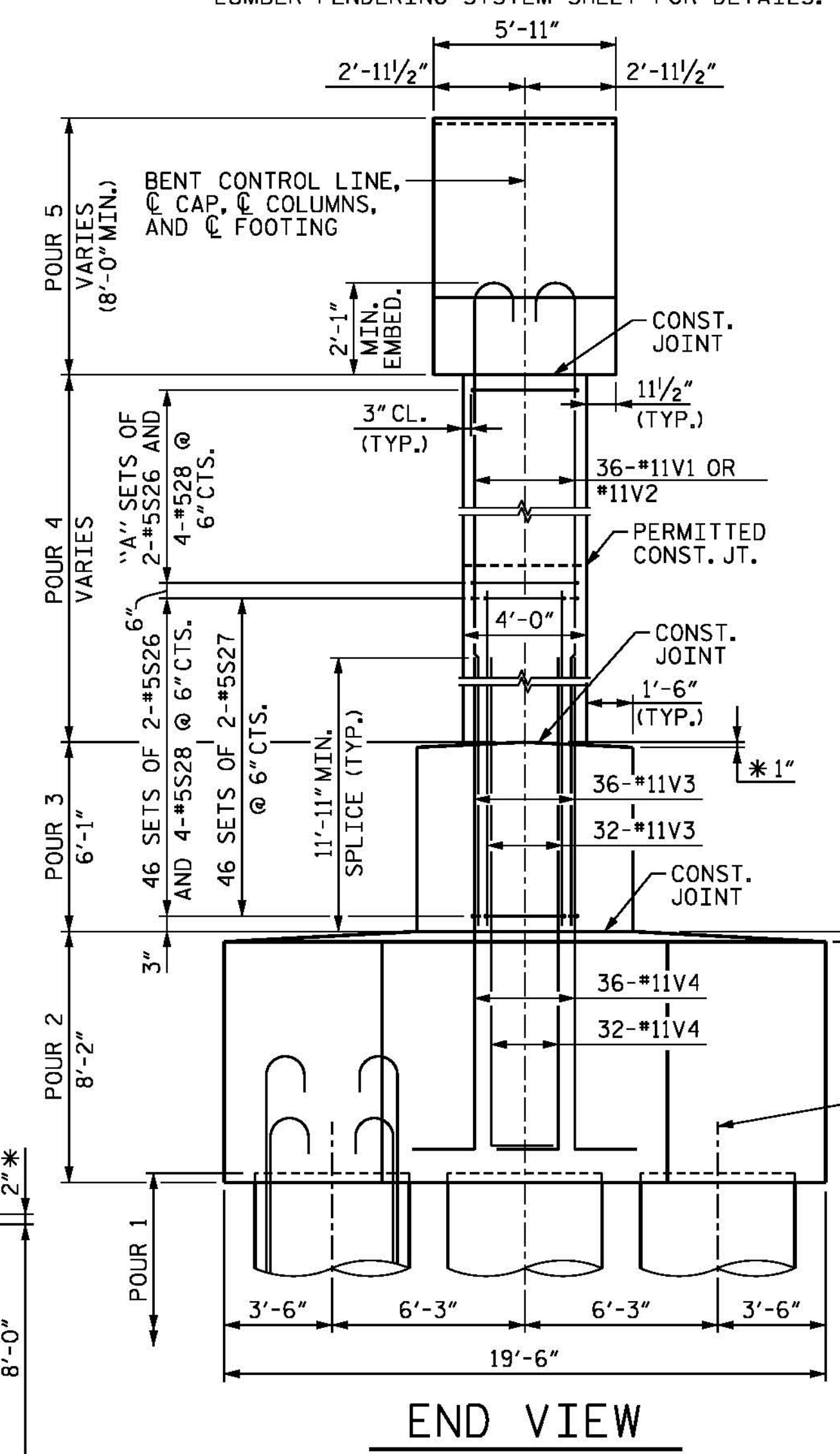
- 93°38'19" TO SHORT CHORD (BENT 14 AHEAD)
- 92°53'09" TO SHORT CHORD (BENT 15 AHEAD)
- 87°06'52" TO SHORT CHORD (BENT 14 BACK)
- 86°21'42" TO SHORT CHORD (BENT 15 BACK)

PLAN
** MEASURED ALONG BENT CONTROL LINE

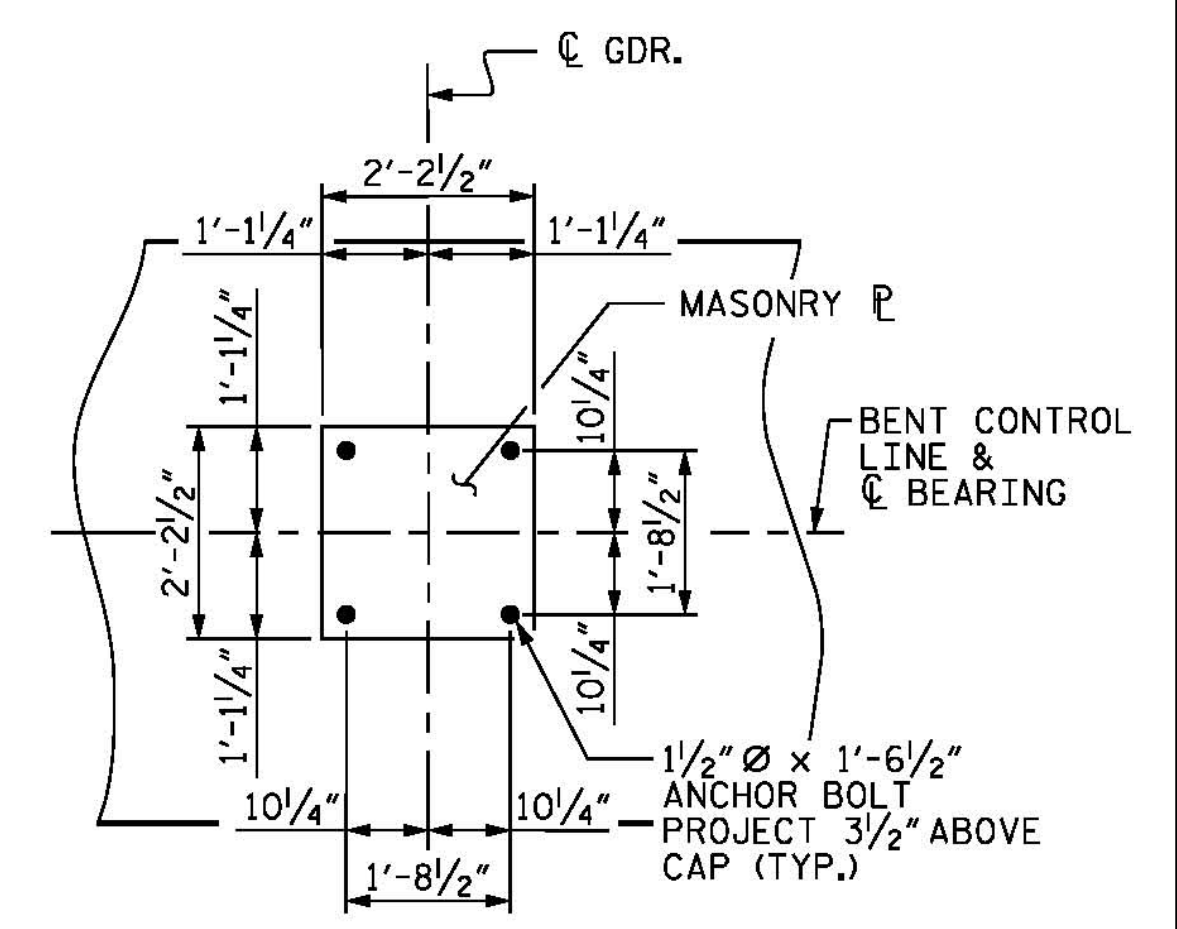


ELEVATION
FOOTING REINFORCEMENT NOT SHOWN FOR CLARITY, SEE SHEET 3 OF 5.

ELEVATION TABLE											
BENT	A	B	C	D	E	F	G	H	I	J	K
14	66.87	67.20	67.54	67.88	68.22	62.39	59.89	59.70	58.86	58.68	61.18
15	68.48	68.21	69.16	69.50	69.83	64.00	61.50	61.32	60.48	60.29	62.79



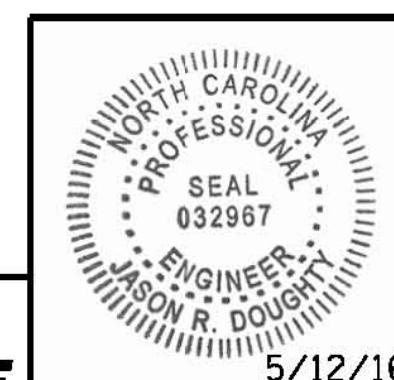
END VIEW



DETAIL A

BAR QUANTITY "A"	
BENT 14 COLUMN 1	50
BENT 14 COLUMN 2	52
BENT 15 COLUMN 1	53
BENT 15 COLUMN 2	55

PROJECT NO. B-4929
PENDER COUNTY
 STATION: 38+13.81 -L2-
 SHEET 1 OF 5 STEEL ALTERNATE



PARSONS BRINCKERHOFF
 434 FAYETTEVILLE STREET
 SUITE 1500
 RALEIGH, NC 27601
 LICENSE NO. F-0165

DocuSigned by:
 Jason R. Doughty

STATE OF NORTH CAROLINA
 DEPARTMENT OF TRANSPORTATION
 RALEIGH
 SUBSTRUCTURE
BENTS 14 AND 15
PLAN AND ELEVATION

REVISIONS						SHEET NO.
NO.	BY:	DATE:	NO.	BY:	DATE:	S-264
1			3			TOTAL SHEETS 278
2			4			

DOCUMENT NOT CONSIDERED FINAL UNLESS ALL SIGNATURES COMPLETED

5/12/2016 401_105_B4929_SMJ_IB14_1.s.dgn

DESIGNED BY: E. ULLMER DATE: FEB 2016
 DRAWN BY: M. HOBBS DATE: FEB 2016
 CHECKED BY: B. LOFLIN DATE: APR 2016
 DESIGN ENGINEER OF RECORD: J. DOUGHTY DATE: MAY 2016