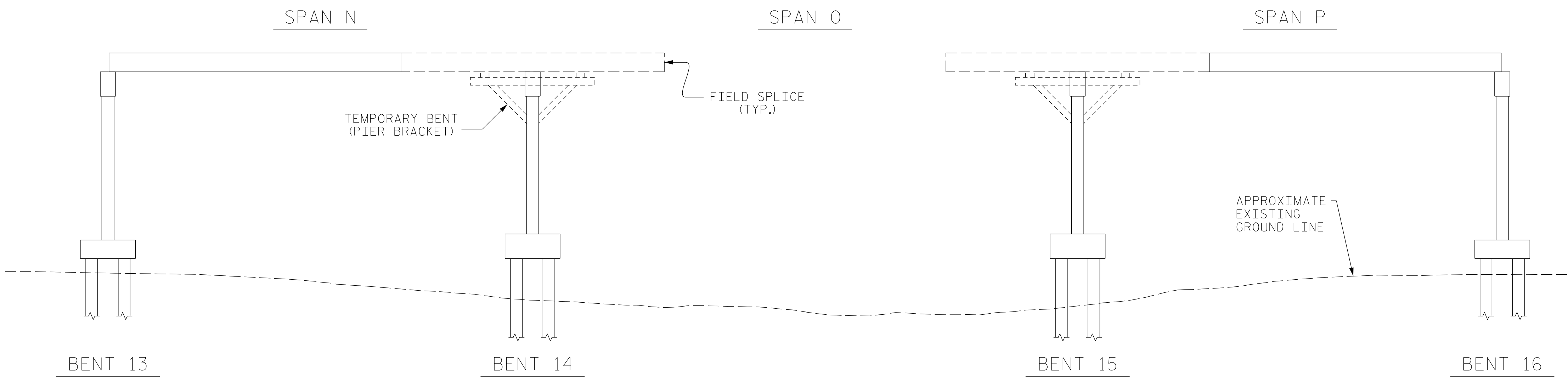


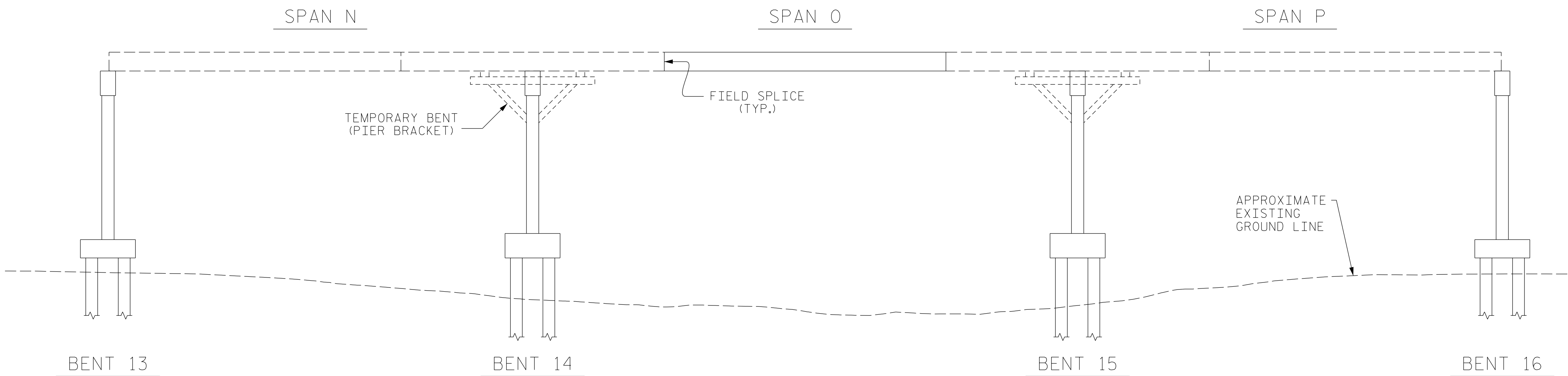
PHASE I GIRDER ERECTION

SPANS Q THROUGH S AND SPANS T THROUGH V SIMILAR



PHASE II GIRDER ERECTION

SPANS Q THROUGH S AND SPANS T THROUGH V SIMILAR



PHASE III GIRDER ERECTION

SPANS Q THROUGH S AND SPANS T THROUGH V SIMILAR

ERECTION NOTES

ERECT A MINIMUM OF TWO GIRDERS WITH ALL DIAPHRAGMS/CROSSFRAMES BETWEEN THE GIRDERS IN PLACE AND THE BOLTS TIGHTENED PRIOR TO RELEASING THE GIRDERS.

ERECT EACH SUBSEQUENT GIRDER WITH DIAPHRAGMS/CROSSFRAMES CONNECTING TO THE ADJACENT PREVIOUSLY ERECTED GIRDER AND TIGHTEN ALL BOLTS BEFORE RELEASING.

THE STRUCTURAL STEEL SHALL REMAIN SUPPORTED DURING ERECTION IN ITS CAMBERED POSITION. TEMPORARY SUPPORTS AS SHOWN SHALL BE USED.

TEMPORARY BENTS SHALL REMAIN IN PLACE UNTIL ALL DIAPHRAGMS/CROSSFRAMES ARE IN PLACE AND ALL HIGH STRENGTH BOLTS ARE TIGHTENED.

THE CONTRACTOR'S ERECTION PLANS SHALL INCLUDE A METHOD OF TEMPORARY BENT REMOVAL THAT WILL UNIFORMLY TRANSFER THE STRUCTURAL WEIGHT TO THE DIAPHRAGMS/CROSSFRAMES AND THE GIRDERS WILL REMAIN IN THE CAMBERED POSITIONS.

PLANS FOR TEMPORARY BENT ERECTION AND REMOVAL SHALL BE SUBMITTED TO THE ENGINEER FOR REVIEW.

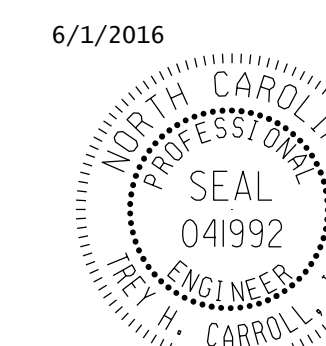
THE CONTRACTOR IS RESPONSIBLE FOR DESIGNING THE TEMPORARY BENTS. THE DESIGN SHALL BE COMPLETED BY A PROFESSIONAL ENGINEER REGISTERED IN THE STATE OF NORTH CAROLINA. THE CONTRACTOR SHALL SUBMIT SIGNED AND SEALED WORKING DRAWINGS AND CALCULATIONS FOR APPROVAL BY THE ENGINEER.

DURING GIRDER ERECTION PROCEDURE, THE CONTRACTOR IS RESPONSIBLE FOR PROVIDING TEMPORARY LATERAL BRACING AND OTHER MEANS OF SUPPORT, AS REQUIRED TO ENSURE STABILITY OF THE GIRDERS, AVOID UPLIFT OF THE GIRDERS AND TEMPORARY BENTS AND TO ENSURE PLUMBNESS OF THE GIRDERS IN THE FINAL POSITION.

THE CONTRACTOR MAY SUBMIT AN ALTERNATE ERECTION METHOD TO THE ENGINEER FOR REVIEW AND APPROVAL.

FOR TEMPORARY BENTS, SEE SPECIAL PROVISIONS.

PROJECT NO. B-4929
PENDER COUNTY
 STATION: 38+13.81 -L2-



DocuSigned by:
Trey H. Carroll III
 C61628E0D9C74BE

STATE OF NORTH CAROLINA
 DEPARTMENT OF TRANSPORTATION
 RALEIGH

**GIRDER ERECTION
 DETAILS**

DRAWN BY : T. H. CARROLL DATE : 2/8/2016
 CHECKED BY : T. R. PETERSON DATE : 2/9/2016
 DESIGN ENGINEER OF RECORD: T. H. CARROLL DATE : 5/10/2016

*****SYSTEM*****
 *****DCN*****
 *****USERNAME*****

DOCUMENT NOT CONSIDERED
 FINAL UNLESS ALL
 SIGNATURES COMPLETED

REVISIONS						SHEET NO.
NO.	BY:	DATE:	NO.	BY:	DATE:	S-227
1			3			TOTAL SHEETS
2			4			278