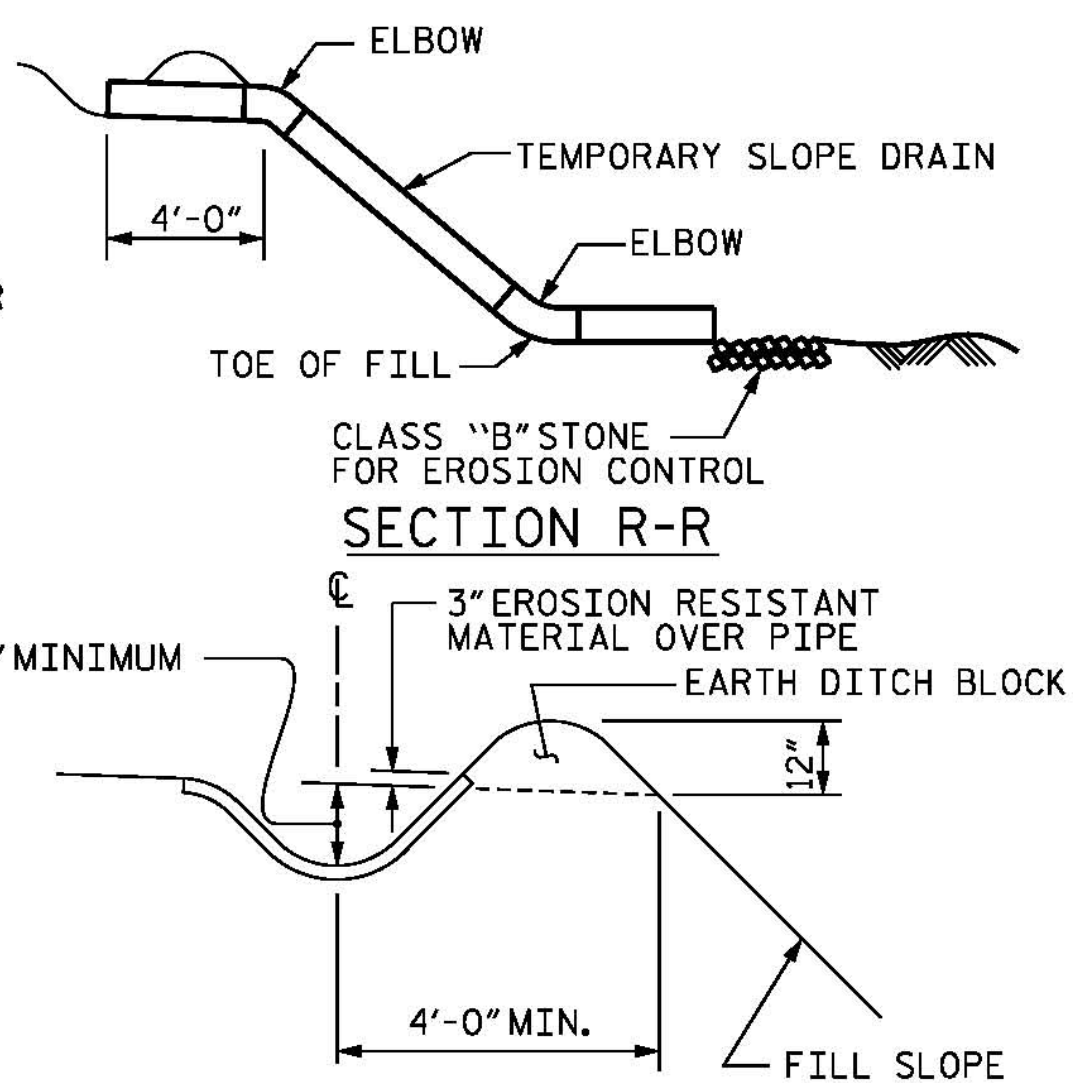


NOTE: IMMEDIATELY AFTER THE CONSTRUCTION OF THE APPROACH SLAB, THE CONTRACTOR SHALL PROVIDE TEMPORARY BERM AND SLOPE DRAIN. CONTRACTOR SHALL GRADE TO PIPE INLET AND PROVIDE EROSION RESISTANT MATERIAL AS SHOWN. THE EROSION RESISTANT MATERIAL SHALL BE EITHER 1) ASPHALT PLANT MIX, TYPE 1 OR TYPE 2, MIN. 2" DEPTH, 2) EROSION CONTROL MAT, OR 3) CONCRETE, AS DIRECTED BY THE ENGINEER. THE SLOPE DRAIN SHALL CONSIST OF A NON-PERFORATED TEMPORARY DRAINAGE PIPE, 12 INCHES IN DIAMETER.

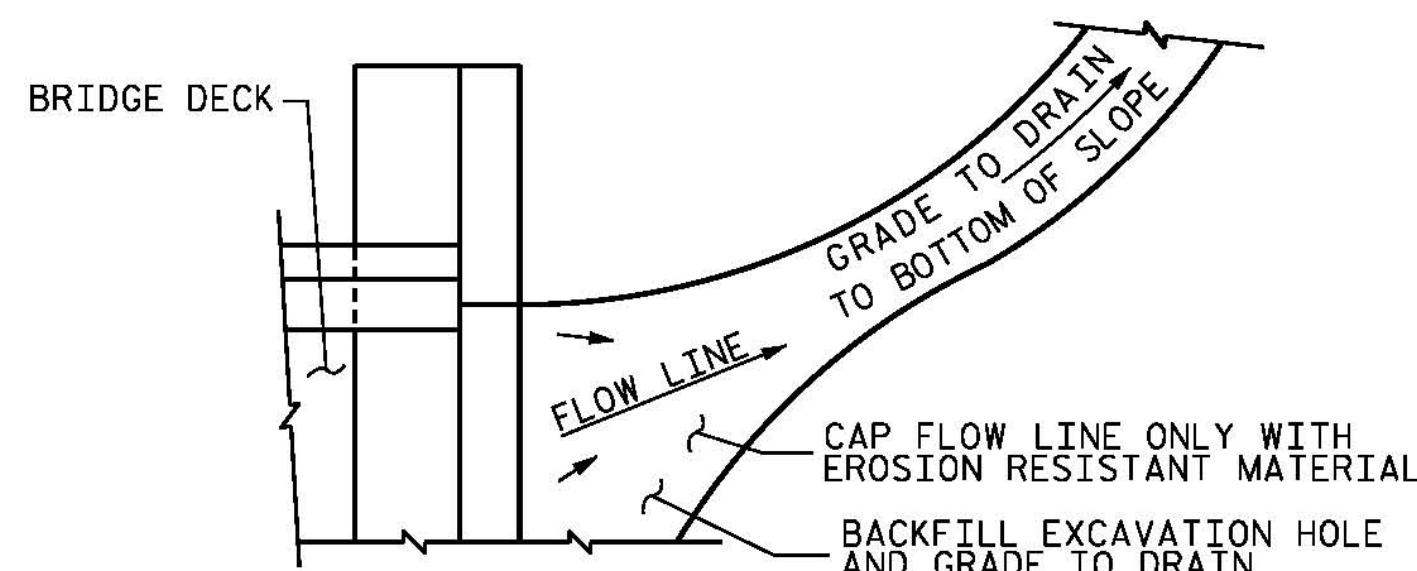
PLAN VIEW

**TEMPORARY BERM AND SLOPE DRAIN DETAILS**

(TO BE USED WHEN SHOULDER BERM GUTTER IS REQUIRED)



SECTION R-R



NOTE: IF THE APPROACH SLAB IS NOT CONSTRUCTED IMMEDIATELY AFTER THE BACKFILLING OF THE END BENT EXCAVATION, GRADE TO DRAIN TO THE BOTTOM OF THE SLOPE AND PROVIDE EROSION RESISTANT MATERIAL, SUCH AS FIBERGLASS ROVING OR AS DIRECTED BY THE ENGINEER TO PREVENT SOIL EROSION AND TO PROTECT THE AREA ADJACENT TO THE STRUCTURE. THE CONTRACTOR WILL BE REQUIRED TO REMOVE THESE MATERIALS PRIOR TO CONSTRUCTION OF THE APPROACH SLAB.

TEMPORARY DRAINAGE DETAIL

**NOTES**

APPROACH SLAB SHALL NOT BE CONSTRUCTED PRIOR TO COMPLETION OF THE BRIDGE DECK.

AREA BETWEEN THE RETAINING WALL AND APPROACH SLAB SHALL BE GRADED TO DRAIN THE WATER AWAY FROM THE FILL FACE OF THE BRIDGE. SEE ROADWAY PLANS.

FOR EXPANSION JOINT SEALS, SEE SPECIAL PROVISIONS.

ALL REINFORCING STEEL SHALL BE EPOXY COATED.

**SPLICE LENGTHS**

BAR SIZE	EPOXY COATED	UNCOATED
#4	2'-0"	1'-9"
#5	2'-6"	2'-2"
#6	3'-10"	2'-7"

**BILL OF MATERIAL**

APPROACH SLAB AT EB #1					
BAR NO.	NO.	SIZE	TYPE	LENGTH	WEIGHT
A1	102	#4	STR	26'-6"	1806
A2	51	#4	STR	4'-0"	136
B1	103	#5	STR	23'-10"	2560
B2	103	#6	STR	24'-8"	3816
B3	2	#5	STR	3'-5"	7
B4	2	#6	STR	3'-5"	10
J1	50	#4	1	1'-5"	47
U1	2	#4	2	3'-10"	5
U2	2	#4	3	2'-10"	4
U3	2	#4	3	3'-2"	4

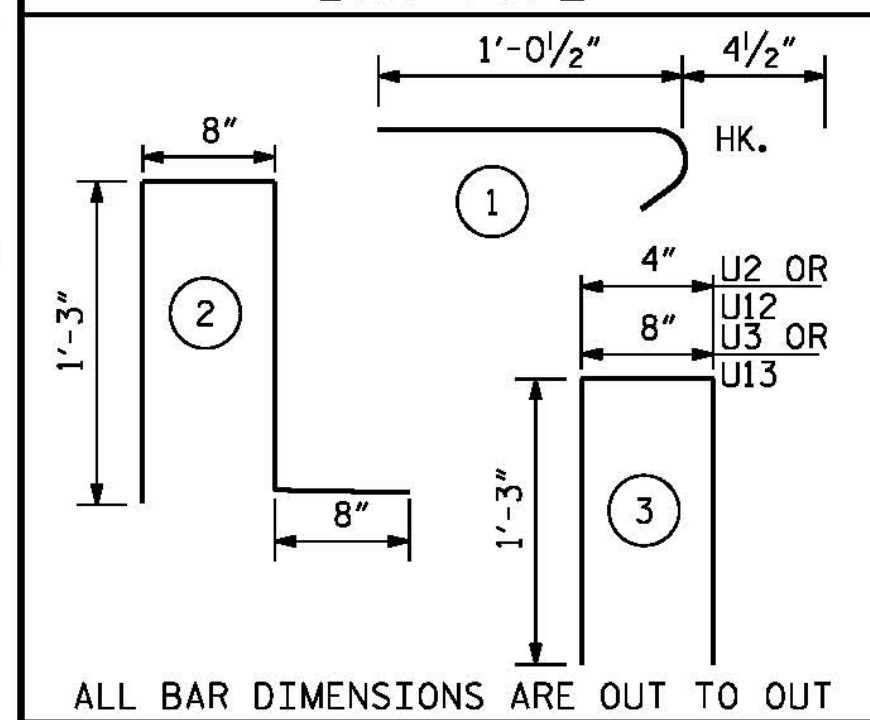
EPOXY COATED REINFORCING STEEL \*\* LBS. 8,395  
CLASS AA CONCRETE \*\* C. Y. 55.8

**APPROACH SLAB AT EB #2**

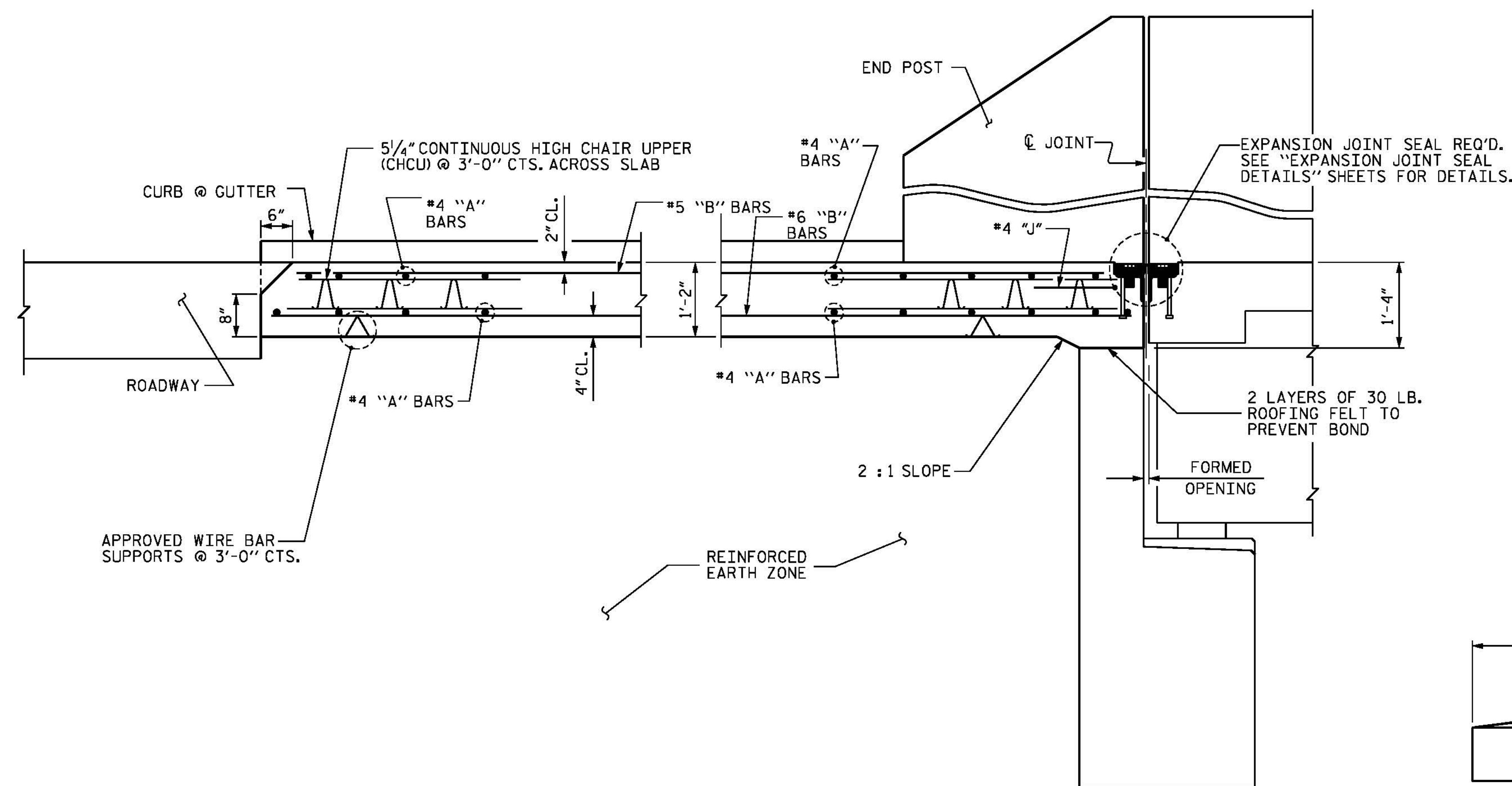
BAR NO.	NO.	SIZE	TYPE	LENGTH	WEIGHT
A11	153	#4	STR	23'-2"	2368
A12	51	#4	STR	4'-0"	136
B11	132	#5	STR	23'-10"	3281
B12	132	#6	STR	24'-8"	4891
B13	2	#5	STR	3'-5"	7
B14	2	#6	STR	3'-5"	10
J11	64	#4	1	1'-5"	61
U11	2	#4	2	3'-10"	5
U12	2	#4	3	2'-10"	4
U13	2	#4	3	3'-2"	4

EPOXY COATED REINFORCING STEEL \*\* LBS. 10,767  
CLASS AA CONCRETE \*\* C. Y. 71.5

**BAR TYPE**

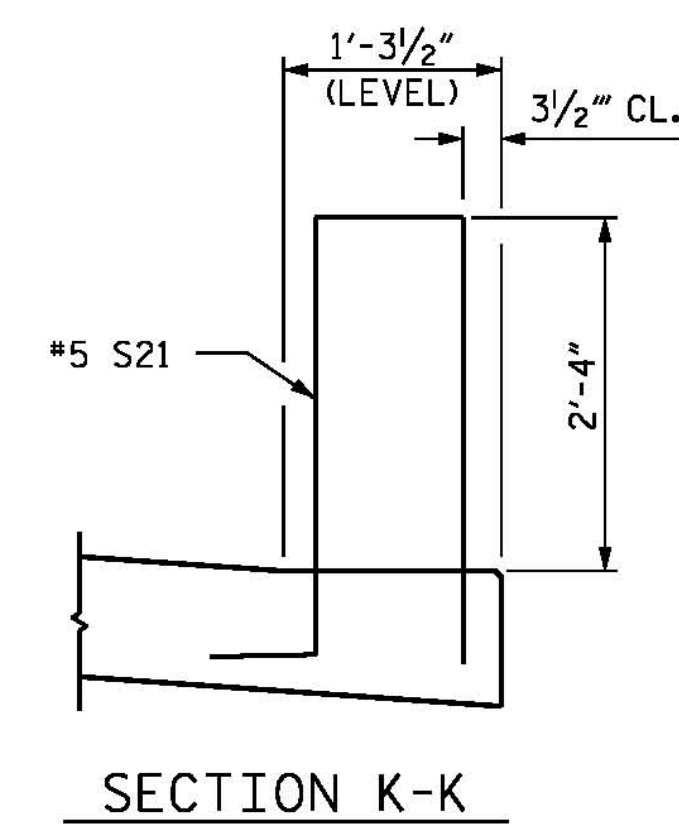


ALL BAR DIMENSIONS ARE OUT TO OUT  
\*\* QUANTITIES FOR VERTICAL CONCRETE BARRIER RAIL AND END POST ARE NOT INCLUDED. SEE SHEET 3 OF 3.

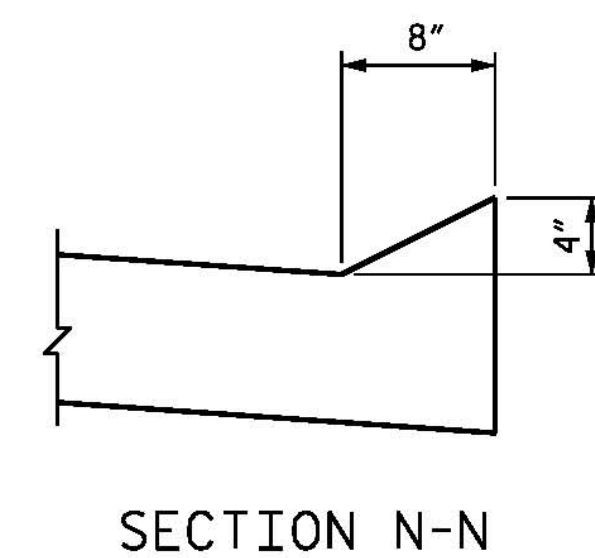


SECTION THRU SLAB

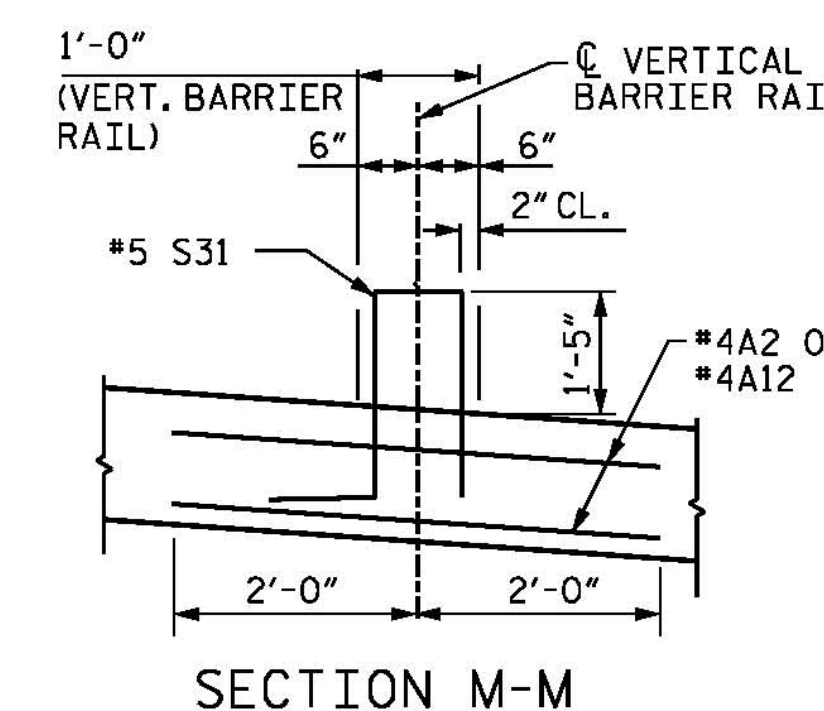
SECTION THRU SLAB SHOWN AT END POST FOR 2 BAR METAL RAIL. ALL OTHER SECTIONS SIMILIAR.



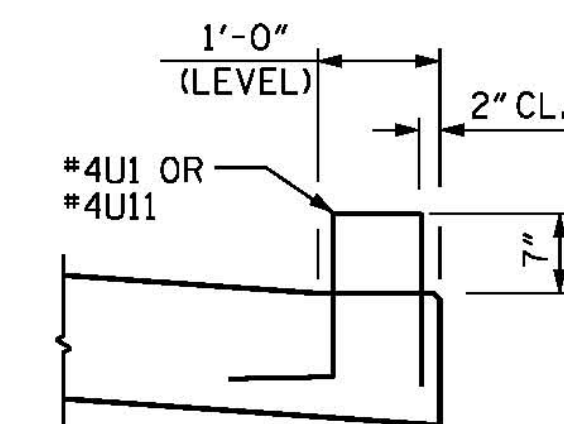
SECTION K-K



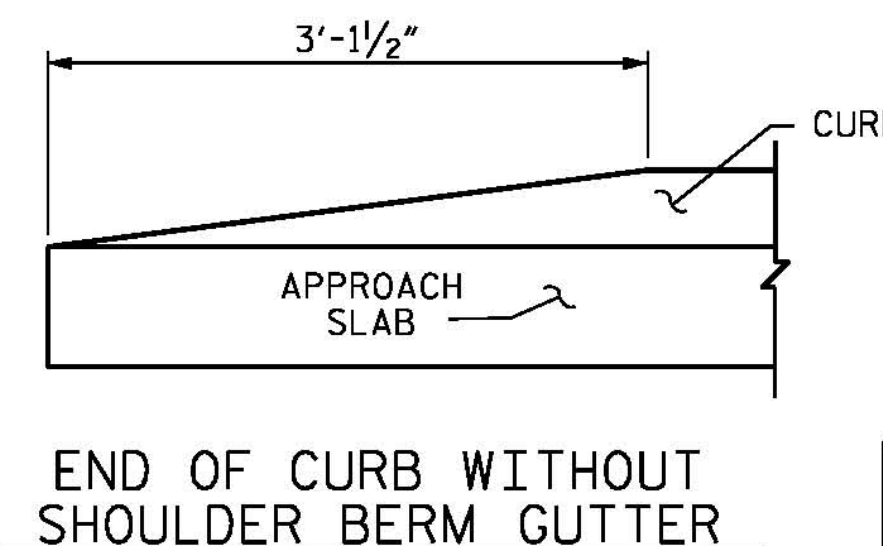
SECTION N-N



SECTION M-M



SECTION P-P

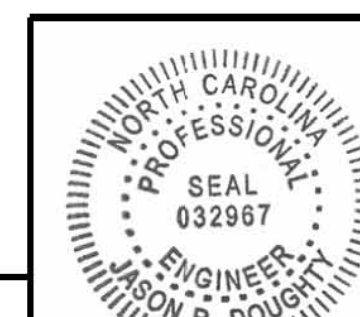


END OF CURB WITHOUT SHOULDER BERM GUTTER

CURB DETAILS

DESIGNED BY: E. DAVIS	DATE: JAN. 2016
DRAWN BY: B. CALDWELL	DATE: JAN. 2016
CHECKED BY: J. SHERMAN	DATE: FEB. 2016
DESIGN ENGINEER OF RECORD: J. DOUGHTY	DATE: MAY 2016
DRAWN BY: EEM 3/95	REV. 10/1/11 MAA/GM
CHECKED BY: VAP 3/95	REV. 12/21/11 MAA/GM
	REV. 6/13 MAA/GM

**PARSONS BRINCKERHOFF**  
434 FAYETTEVILLE STREET  
SUITE 1500  
RALEIGH, NC 27601  
LICENSE NO. F-0165



DocuSigned by:  
Jason R. Doughty  
00F1C8648274F7...

PROJECT NO. **B-4929**  
PENDER COUNTY  
STATION: **38+13.81 -L2-**  
SHEET 2 OF 3

STATE OF NORTH CAROLINA DEPARTMENT OF TRANSPORTATION RALEIGH					
STANDARD BRIDGE APPROACH SLAB FOR FLEXIBLE PAVEMENT					
REVISIONS					
NO.	BY:	DATE:	NO.	BY:	DATE:
1			3		
2			4		

SHEET NO. **S-208**  
TOTAL SHEETS **278**