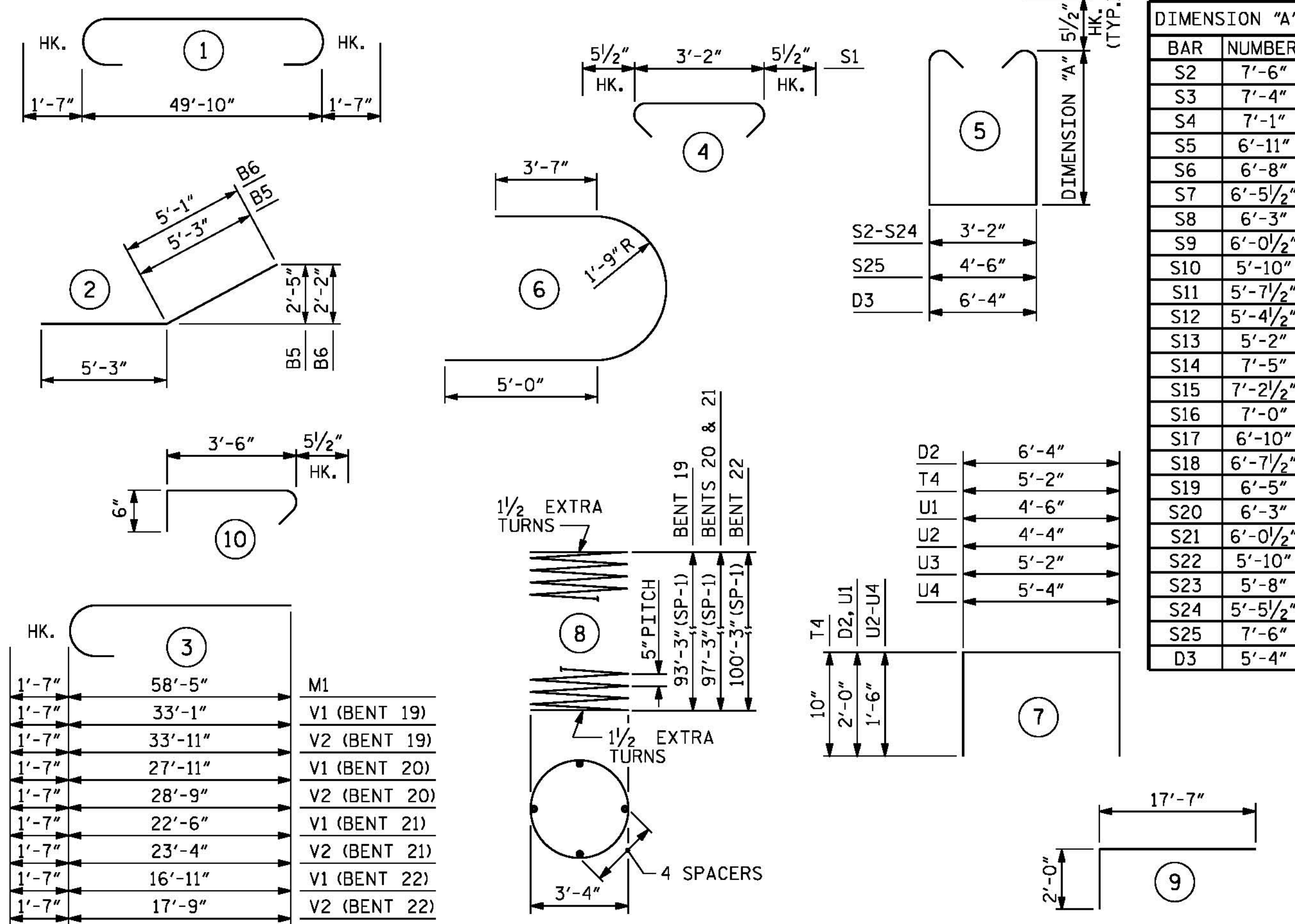


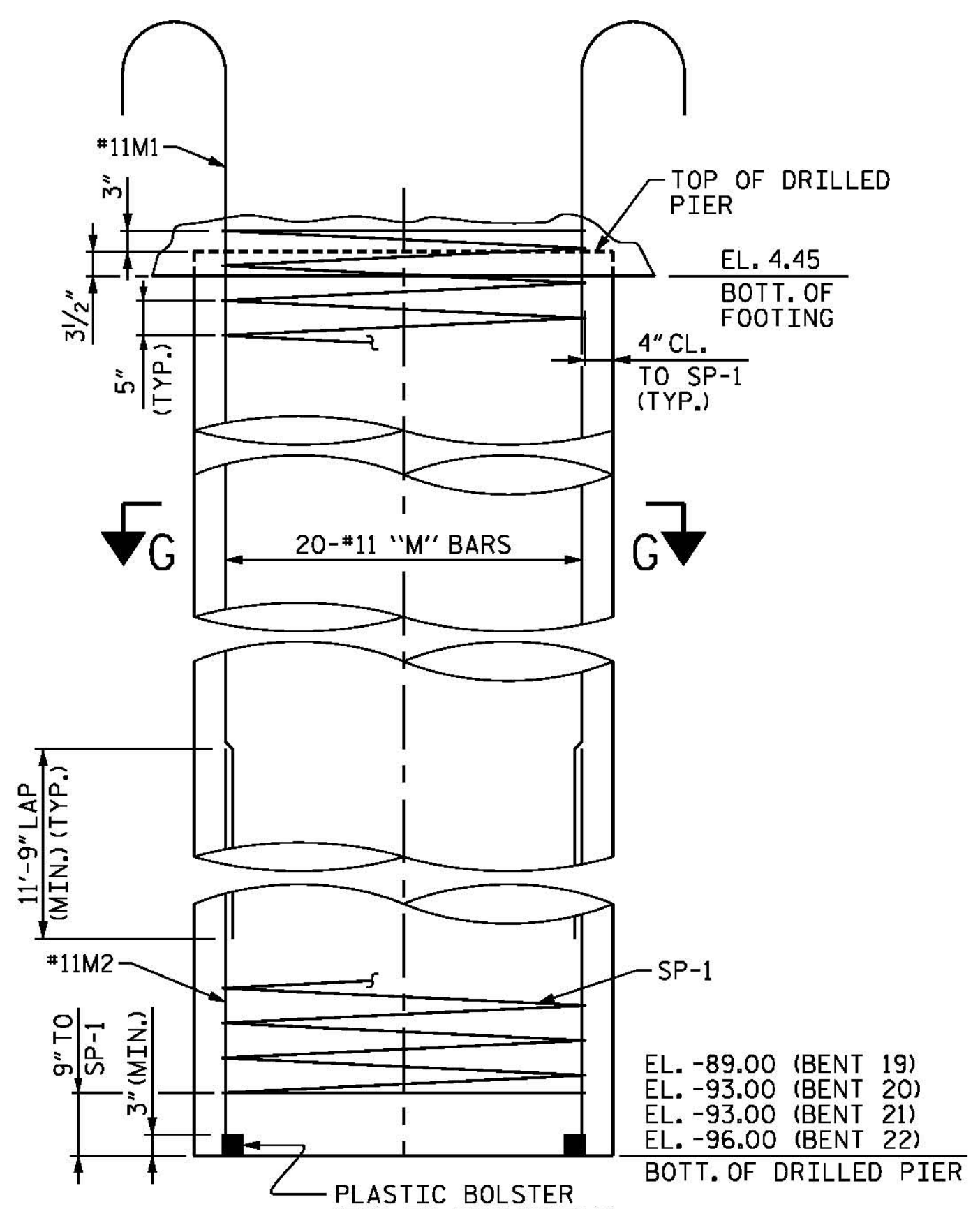
BAR TYPES



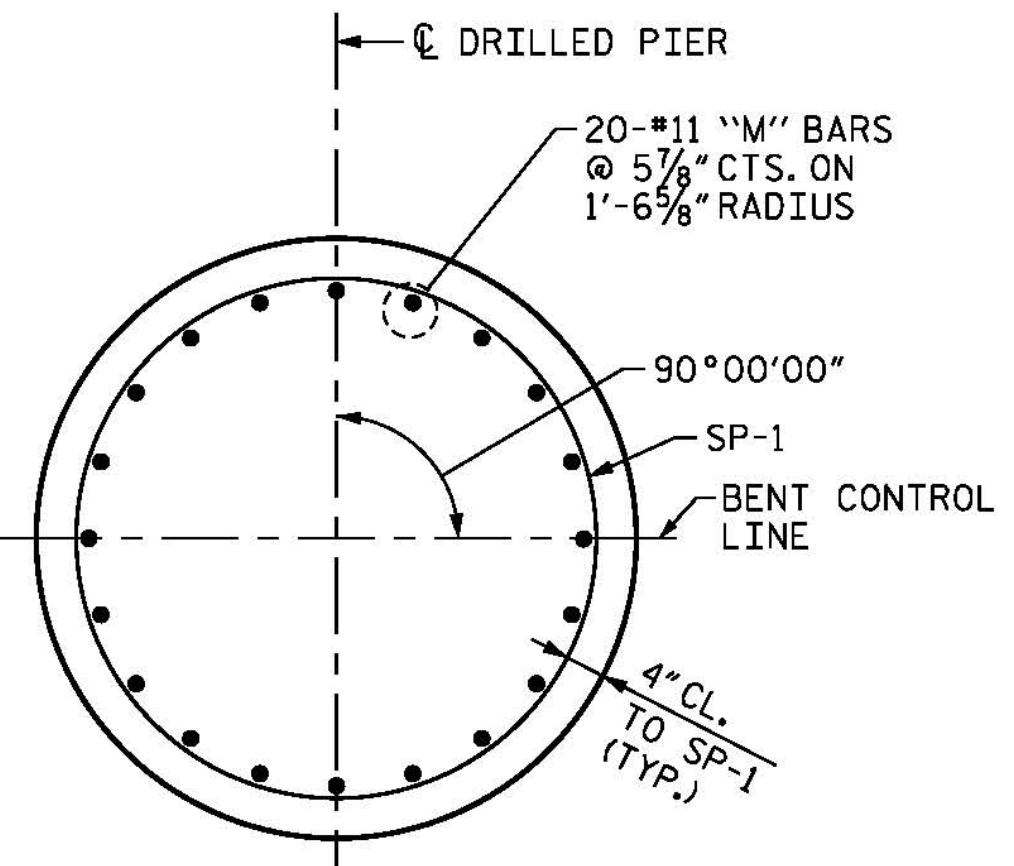
ALL BAR DIMENSIONS ARE OUT TO OUT.

BILL OF MATERIAL

BENT 19										BENT 20													
BAR	NUMBER	SIZE	TYPE	LENGTH	WEIGHT	BAR	NUMBER	SIZE	TYPE	LENGTH	WEIGHT	BAR	NUMBER	SIZE	TYPE	LENGTH	WEIGHT	BAR	NUMBER	SIZE	TYPE	LENGTH	WEIGHT
B1	10	*11	1	53'-0"	2816	S25	24	*5	5	20'-5"	511	B1	10	*11	1	53'-0"	2816	S25	24	*5	5	20'-5"	511
B2	10	*11	STR	49'-10"	2648	S26	252	*5	6	14'-1"	3702	B2	10	*11	STR	49'-10"	2648	S26	208	*5	6	14'-1"	3055
B3	8	*10	STR	40'-4"	1388	S27	504	*5	10	4'-6"	2366	B3	8	*10	STR	40'-4"	1388	S27	416	*5	10	4'-6"	1952
B4	6	*10	STR	42'-4"	1093							B4	6	*10	STR	42'-4"	1093						
B5	8	*10	2	10'-6"	361	T1	188	*9	STR	19'-4"	12358	B5	8	*10	2	10'-6"	361	T1	188	*9	STR	19'-4"	12358
B6	8	*10	2	10'-4"	356	T2	136	*7	STR	19'-4"	5374	B6	8	*10	2	10'-4"	356	T2	136	*7	STR	19'-4"	5374
B7	14	*7	STR	49'-10"	1426	T3	72	*5	STR	19'-4"	1452	B7	14	*7	STR	49'-10"	1426	T3	72	*5	STR	19'-4"	1452
B8	2	*7	STR	47'-8"	195	T4	312	*5	7	6'-10"	2224	B8	2	*7	STR	47'-8"	195	T4	312	*5	7	6'-10"	2224
B9	2	*7	STR	45'-0"	184	T5	110	*5	STR	7'-2"	822	B9	2	*7	STR	45'-0"	184	T5	110	*5	STR	7'-2"	822
B10	40	*4	STR	6'-3"	167							B10	40	*4	STR	6'-3"	167						
B11	10	*4	STR	5'-2"	35	U1	50	*4	7	8'-6"	284	B11	10	*4	STR	5'-2"	35	U1	50	*4	7	8'-6"	284
B12	24	*4	STR	4'-6"	72	U2	10	*4	7	7'-4"	49	B12	24	*4	STR	4'-6"	72	U2	10	*4	7	7'-4"	49
						U3	5	*4	7	8'-2"	27							U3	5	*4	7	8'-2"	27
						U4	5	*4	7	8'-4"	28							U4	5	*4	7	8'-4"	28
D1	42	*10	STR	39'-4"	7109							D1	42	*10	STR	39'-4"	7109						
D2	76	*5	7	10'-4"	819							D2	76	*5	7	10'-4"	819						
D3	14	*5	5	17'-11"	262	V1	36	*11	3	34'-8"	6631	D3	14	*5	5	17'-11"	262	V1	36	*11	3	29'-6"	5642
						V2	36	*11	3	35'-6"	6790							V2	36	*11	3	30'-4"	5802
M1	160	*11	3	60'-0"	51005	V3	72	*11	9	19'-7"	7491	M1	160	*11	3	60'-0"	51005	V3	72	*11	9	19'-7"	7491
M2	160	*11	STR	52'-2"	44346							M2	160	*11	STR	56'-2"	47746						
S1	110	*5	4	4'-1"	468	EPOXY COATED REINFORCING STEEL LBS. 166,942					S1	110	*5	4	4'-1"	468	EPOXY COATED REINFORCING STEEL LBS. 167,304						
S2	66	*5	5	19'-1"	1314							S2	66	*5	5	19'-1"	1314						
S3	2	*5	5	18'-9"	39							S3	2	*5	5	18'-9"	39	SP-1	8	*	8	2438'-9"	20349
S4	2	*5	5	18'-3"	38	CLASS "AA" CONCRETE BREAKDOWN					S4	2	*5	5	18'-3"	38	CLASS "AA" CONCRETE BREAKDOWN						
S5	2	*5	5	17'-11"	37	POUR #2 - FOOTING	C.Y.	179.8	S5	2	*5	5	17'-11"	37	POUR #3 - STRUT	C.Y.	62.7						
S6	2	*5	5	17'-5"	36	POUR #4 - COLUMNS	C.Y.	61.0	S6	2	*5	5	17'-5"	36	POUR #5 - CAP	C.Y.	73.9						
S7	2	*5	5	17'-0"	35	CLASS "AA" CONCRETE C.Y. 377.4					S7	2	*5	5	17'-0"	35	CLASS "AA" CONCRETE C.Y. 364.8						
S8	2	*5	5	16'-7"	35	4'-0" Ø DRILLED PIERS QUANTITIES:					S8	2	*5	5	16'-7"	35	4'-0" Ø DRILLED PIERS QUANTITIES:						
S9	2	*5	5	16'-2"	34	DRILLED PIER	LIN. FT.	749.9	S9	2	*5	5	16'-2"	34	DRILLED PIER LIN. FT. 781.9								
S10	2	*5	5	15'-9"	33	POUR 1 - DRILLED PIER C.Y. 349.0					S10	2	*5	5	15'-9"	33	POUR 1 - DRILLED PIER C.Y. 363.9						
S11	2	*5	5	15'-4"	32	PERMANENT STEEL CASING FOR					S11	2	*5	5	15'-4"	32	PERMANENT STEEL CASING FOR						
S12	2	*5	5	14'-10"	31	4'-0" Ø DRILLED PIERS	LIN. FT.	269.9	S12	2	*5	5	14'-10"	31	4'-0" Ø DRILLED PIERS LIN. FT. 269.9								
S13	2	*5	5	14'-5"	30	CSL TUBES LIN. FT. 3047.7					S13	2	*5	5	14'-5"	30	CSL TUBES LIN. FT. 3175.7						
S14	2	*5	5	18'-11"	39				S14	2	*5	5	18'-11"	39	SPT TESTING EA. 8								
S15	2	*5	5	18'-6"	39				S15	2	*5	5	18'-6"	39									
S16	2	*5	5	18'-1"	38				S16	2	*5	5	18'-1"	38									
S17	2	*5	5	17'-9"	37				S17	2	*5	5	17'-9"	37									
S18	2	*5	5	17'-4"	36				S18	2	*5	5	17'-4"	36									
S19	2	*5	5	16'-11"	35				S19	2	*5	5	16'-11"	35									
S20	2	*5	5	16'-7"	35				S20	2	*5	5	16'-7"	35									
S21	2	*5	5	16'-2"	34				S21	2	*5	5	16'-2"	34									
S22	2	*5	5	15'-9"	33				S22	2	*5	5	15'-9"	33									
S23	2	*5	5	15'-5"	32				S23	2	*5	5	15'-5"	32									
S24	2	*5	5	15'-0"	31				S24	2	*5	5	15'-0"	31									



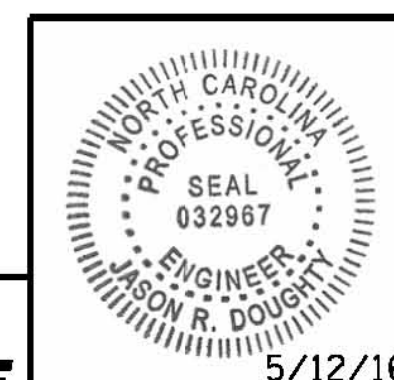
DRILLED PIER ELEVATION



SECTION G-G

NOTES:
FOR NOTES, SEE SHEET 1 OF 5.

PROJECT NO. B-4929
PENDER COUNTY
STATION: 38+13.81 -L2-
SHEET 4 OF 5



PARSONS BRINCKERHOFF
434 FAYETTEVILLE STREET
SUITE 1500
RALEIGH, NC 27601
LICENSE NO. F-0165

DocuSigned by:
Jason R. Doughty
00F1C96448274F7

STATE OF NORTH CAROLINA
DEPARTMENT OF TRANSPORTATION
RALEIGH
SUBSTRUCTURE
BENTS 19 THROUGH 22
BILL OF MATERIALS

REVISIONS						SHEET NO.	
NO.	BY:	DATE:	NO.	BY:	DATE:	S-188	
1			3			TOTAL SHEETS 278	
2			4				

DOCUMENT NOT CONSIDERED FINAL
UNLESS ALL SIGNATURES COMPLETED

5/12/2016
400_369_B4929_SMU_IB19_4.dgn

DESIGNED BY: J. BORUTA DATE: MAR 2016
DRAWN BY: K. WHITE DATE: MAR 2016
CHECKED BY: J. DOUGHTY DATE: MAR 2016
DESIGN ENGINEER OF RECORD: J. DOUGHTY DATE: MAY 2016