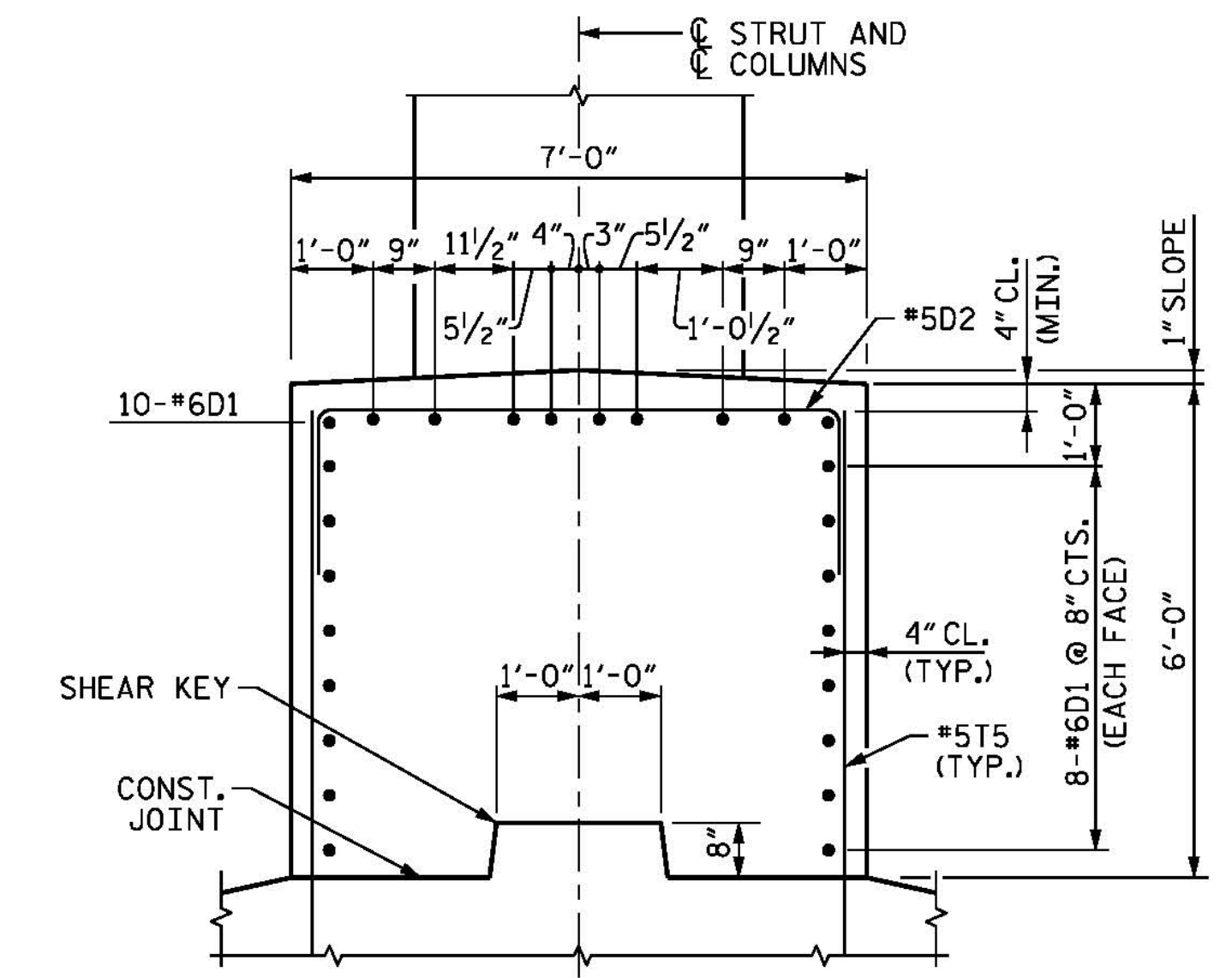


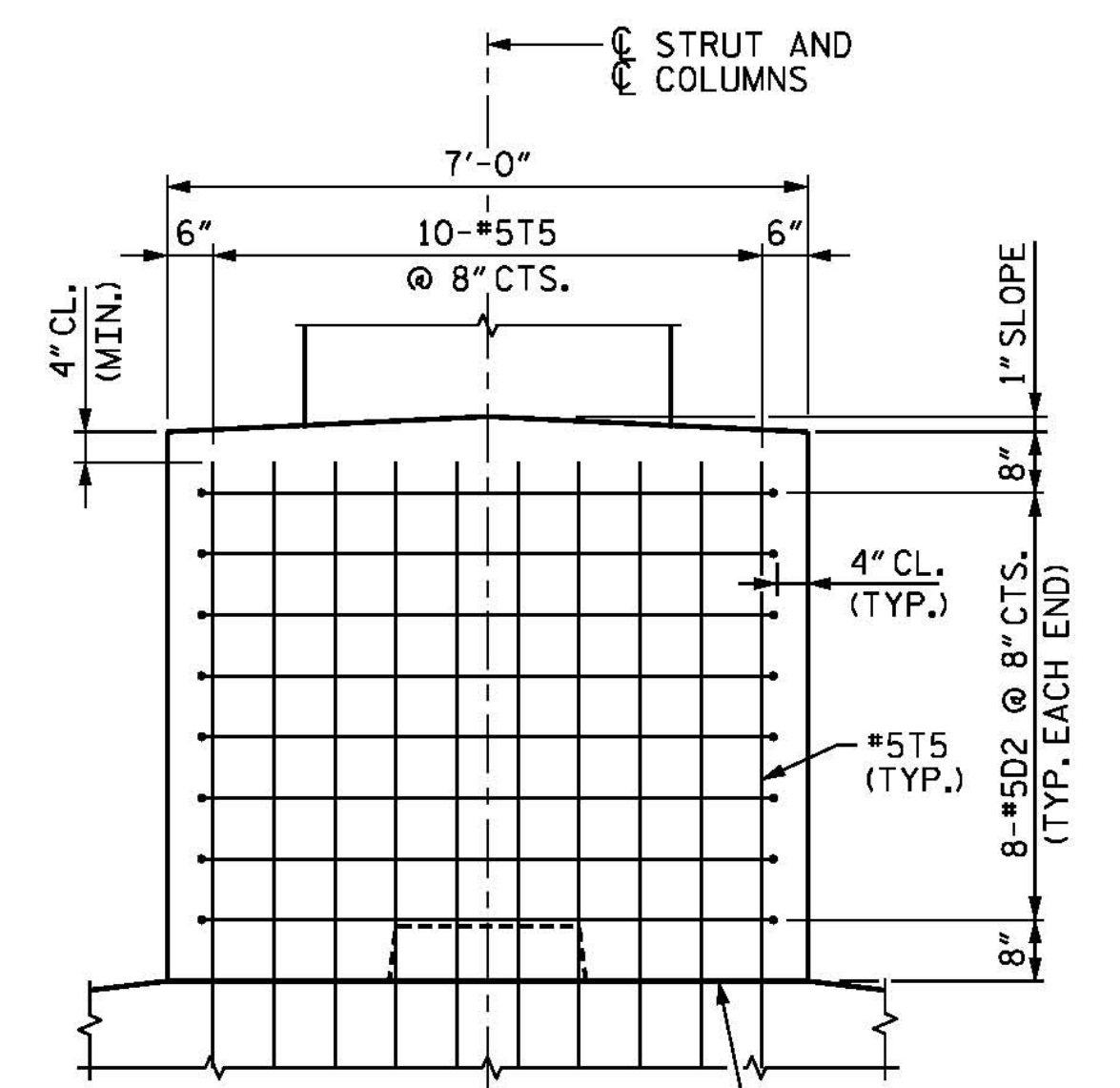
**NOTES**

FOR NOTES, SEE SHEET 1 OF 5.

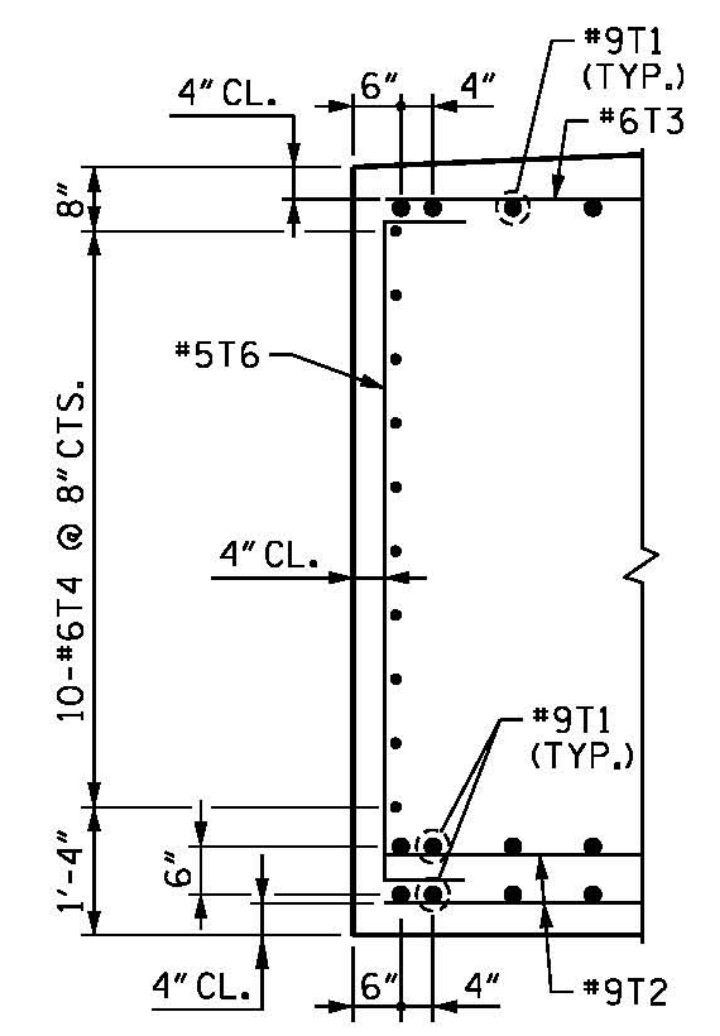


**SECTION E-E**

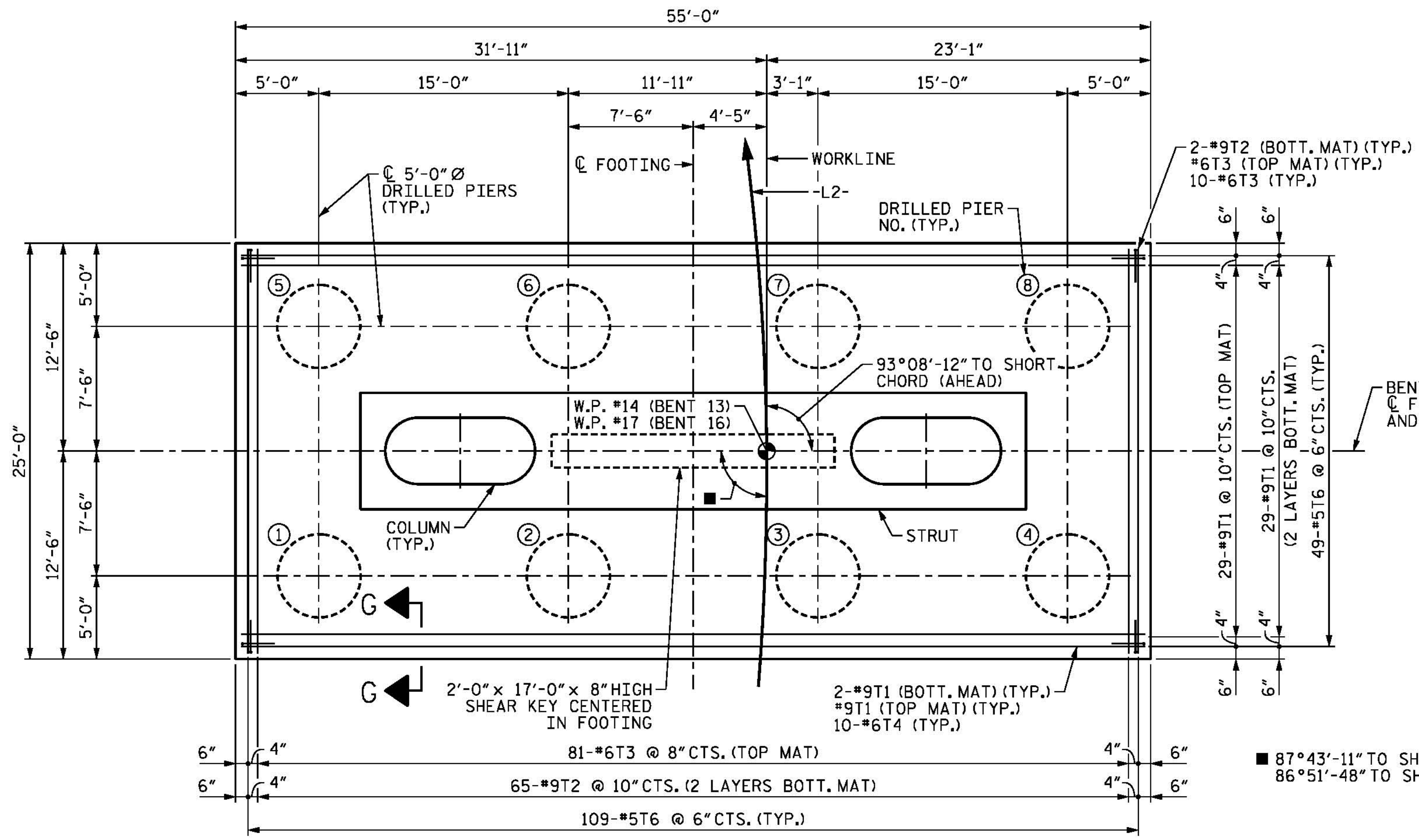
BARs MAY BE SHIFTED SLIGHTLY, AS NECESSARY, TO CLEAR COLUMN REINFORCING.



**VIEW Z-Z**

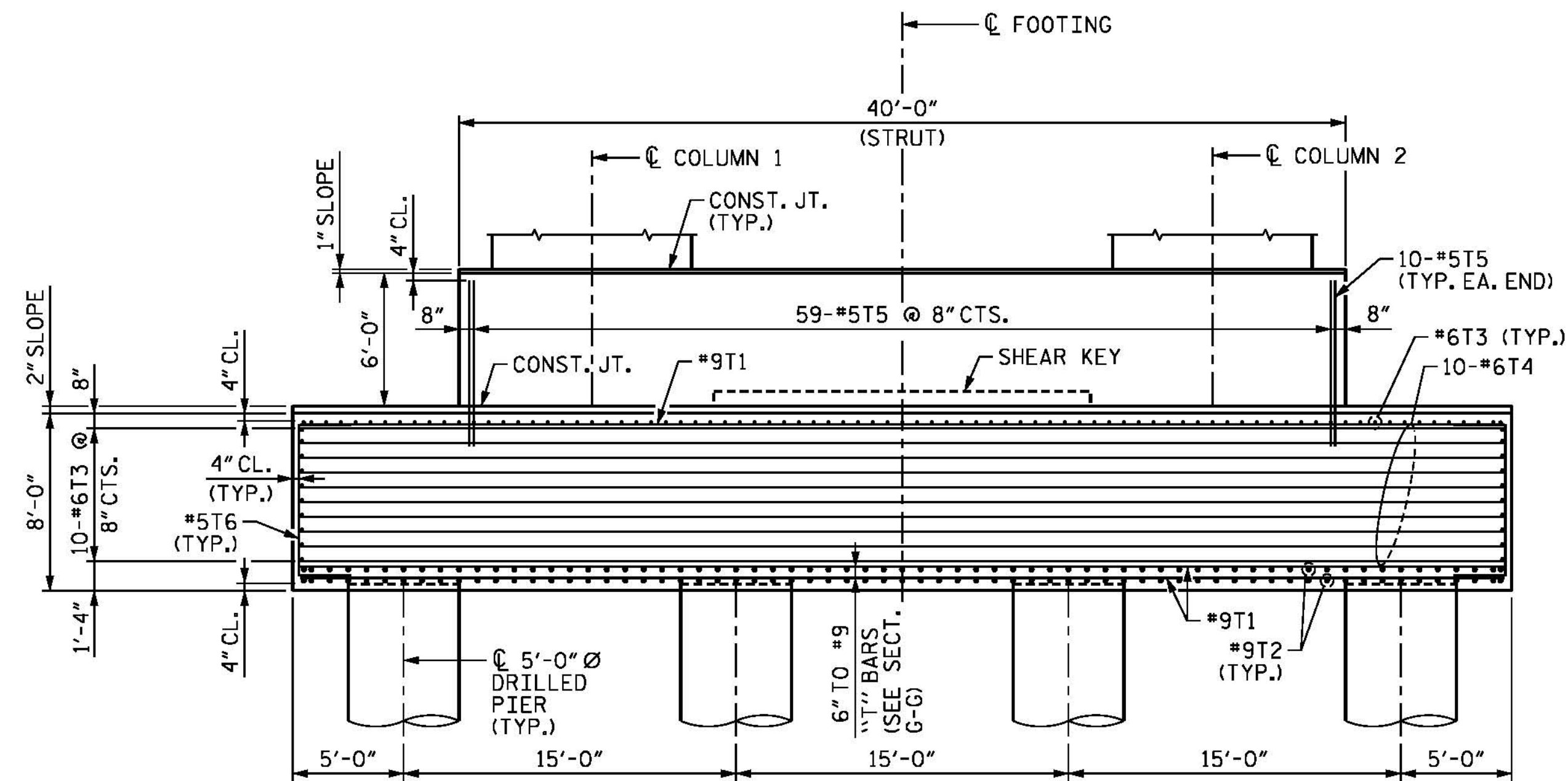


**SECTION G-G**



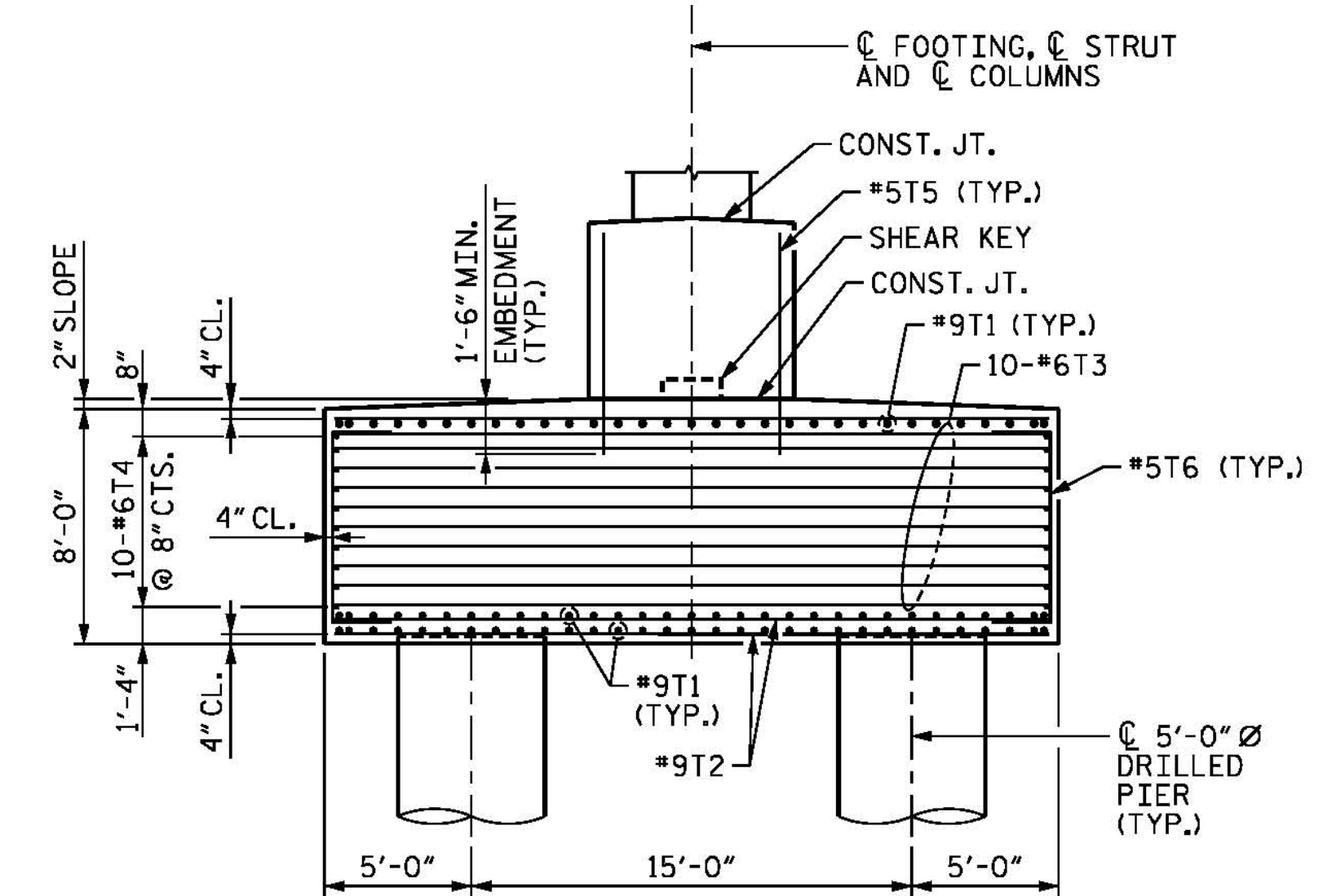
**FOOTING PLAN**

87°43'-11" TO SHORT CHORD (BENT 13 BACK)  
86°51'-48" TO SHORT CHORD (BENT 16 BACK)



**FOOTING AND STRUT ELEVATION**

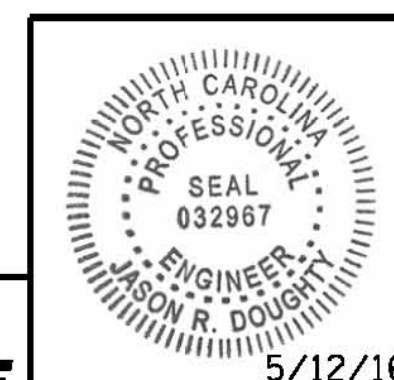
COLUMN AND STRUT REINFORCEMENT NOT SHOWN FOR CLARITY, SEE SHEETS 1 OF 5 AND 2 OF 5.



**SIDE ELEVATION**

COLUMN AND STRUT REINFORCEMENT NOT SHOWN FOR CLARITY, SEE SHEETS 1 OF 5 AND 2 OF 5.

PROJECT NO. B-4929  
PENDER COUNTY  
STATION: 38+13.81 -L2-  
SHEET 3 OF 5



STATE OF NORTH CAROLINA  
DEPARTMENT OF TRANSPORTATION  
RALEIGH  
SUBSTRUCTURE  
**BENTS 13 AND 16**  
SECTIONS AND DETAILS

REVISIONS					
NO.	BY:	DATE:	NO.	BY:	DATE:
1			3		
2			4		

SHEET NO.  
**S-172**  
TOTAL SHEETS  
278

**PARSONS BRINCKERHOFF**  
434 FAYETTEVILLE STREET  
SUITE 1500  
RALEIGH, NC 27601  
LICENSE NO. F-0165

DocuSigned by:  
*Jason R. Doughty*  
00F1C96448274F7...

**DOCUMENT NOT CONSIDERED FINAL UNLESS ALL SIGNATURES COMPLETED**

5/12/2016  
400\_337\_B4929\_SMU\_IB13\_3.dgn

DESIGNED BY:	E. ULLMER	DATE:	FEB 2016
DRAWN BY:	M. HOBBS	DATE:	FEB 2016
CHECKED BY:	B. LOFLIN	DATE:	MAR 2016
DESIGN ENGINEER OF RECORD:	J. DOUGHTY	DATE:	MAY 2016