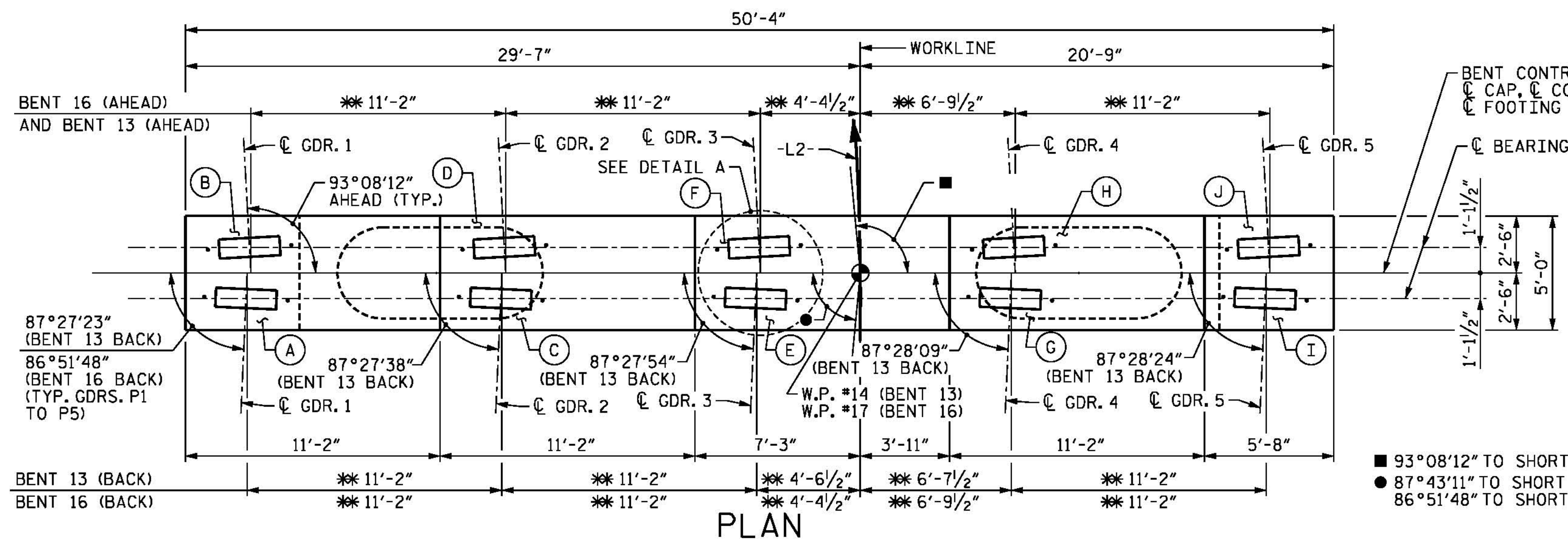
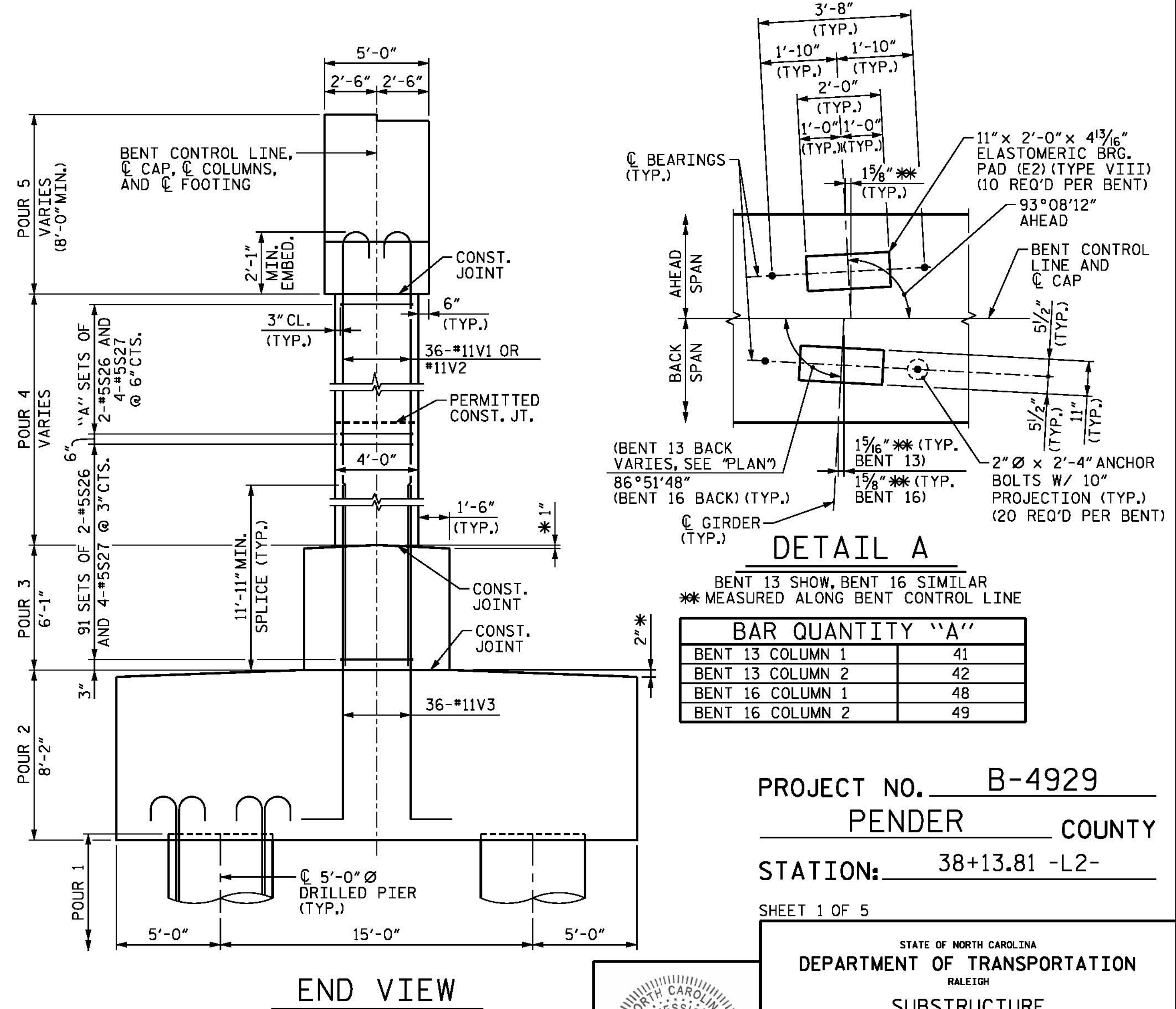
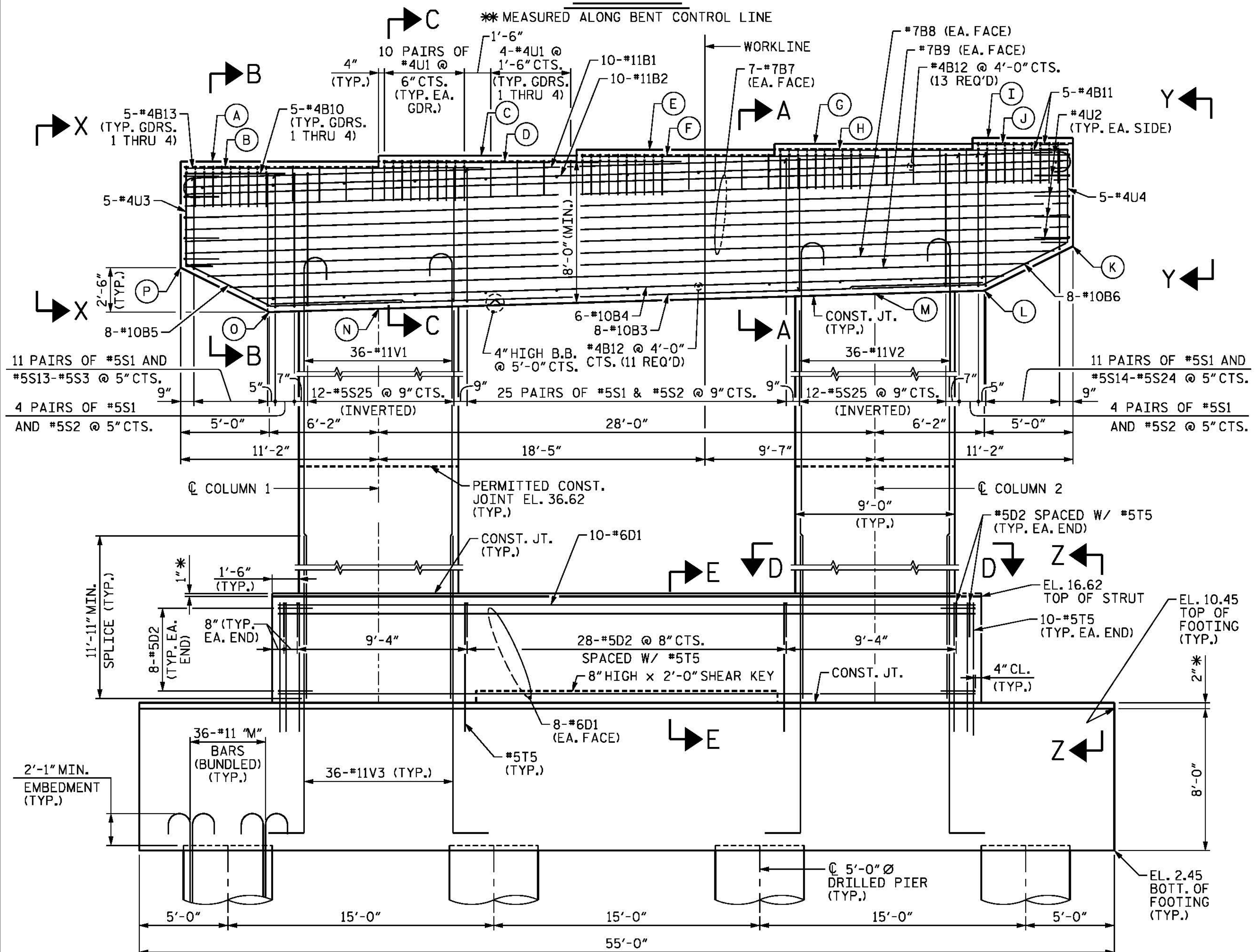


NOTES

STIRRUPS AND "U" BARS IN CAP MAY BE SHIFTED AS NECESSARY TO CLEAR ANCHOR BOLTS.
 HOOKS ON "V" AND "M" BARS MAY BE TURNED AS NECESSARY FOR PLACING REINFORCING STEEL.
 "T" BARS IN FOOTING MAY BE SHIFTED AS NECESSARY TO CLEAR COLUMN AND DRILLED PIER REINFORCEMENT.
 FOR FOUNDATION NOTES, SEE "FOUNDATION NOTES" SHEET.
 FOR SECTIONS AND VIEWS, SEE SHEET 2 OF 5 AND SHEET 3 OF 5.
 FOR FOOTING AND DRILLED PIER REINFORCING DETAILS, SEE SHEET 3 OF 5 AND SHEET 4 OF 5.
 * THE FOOTING AND STRUT ARE SLOPED TO DRAIN.
 ALL STEEL IN THE DRILLED PIERS IS INCLUDED IN THE PAY ITEMS FOR "EPOXY COATED REINFORCING STEEL" AND "EPOXY COATED SPIRAL COLUMN REINFORCING STEEL".
 THE CONTRACTOR'S ATTENTION IS CALLED TO THE FACT THAT THE LONGITUDINAL REINFORCEMENT FOR THE DRILLED PIERS IS DETAILED WITH 3 FEET OF EXTRA LENGTH.
 NO SEPARATE PAYMENT SHALL BE MADE FOR ANY ADDITIONAL STEEL REQUIRED IN CONSTRUCTION OF THE DRILLED PIER AS THIS IS CONSIDERED INCIDENTAL TO THE LINEAR FOOT PRICE FOR DRILLED PIER.
 FOR MASS CONCRETE, SEE SPECIAL PROVISIONS.
 THE TOP SURFACE AREAS OF THE BENT CAP SHALL BE CURED IN ACCORDANCE WITH THE STANDARD SPECIFICATIONS EXCEPT THE MEMBRANE COMPOUND METHOD SHALL NOT BE USED.



- 93°08'12" TO SHORT CHORD (AHEAD)
- 87°43'11" TO SHORT CHORD (BENT 13 BACK)
- 86°51'48" TO SHORT CHORD (BENT 16 BACK)



ELEVATION TABLE

BENT	A	B	C	D	E	F	G	H	I	J	K	L	M	N	O	P
13	62.51	62.21	62.85	62.54	63.18	62.88	63.51	63.21	63.85	63.54	57.73	55.23	55.04	54.21	54.02	56.52
16	65.93	65.68	66.26	66.02	66.60	66.35	66.93	66.69	67.27	67.02	61.21	58.71	58.52	57.67	57.48	59.98

FOOTING REINFORCEMENT NOT SHOWN FOR CLARITY, SEE SHEET 3 OF 5.

DESIGNED BY: E. ULLMER DATE: MAR 2016
 DRAWN BY: M. HOBBS DATE: MAR 2016
 CHECKED BY: B. LOFLIN DATE: MAR 2016
 DESIGN ENGINEER OF RECORD: J. DOUGHTY DATE: MAY 2016

PARSONS BRINCKERHOFF
 434 FAYETTEVILLE STREET
 SUITE 1500
 RALEIGH, NC 27601
 LICENSE NO. F-0165



PROJECT NO. B-4929
 PENDER COUNTY
 STATION: 38+13.81 -L2-
 SHEET 1 OF 5

STATE OF NORTH CAROLINA
 DEPARTMENT OF TRANSPORTATION
 RALEIGH
 SUBSTRUCTURE
 BENTS 13 AND 16
 PLAN AND ELEVATION

REVISIONS

NO.	BY:	DATE:	NO.	BY:	DATE:
1			3		
2			4		

SHEET NO. S-170
 TOTAL SHEETS 278

DOCUMENT NOT CONSIDERED FINAL UNLESS ALL SIGNATURES COMPLETED

5/11/2016 400_333_B4929_SMU_IB13.1.dgn