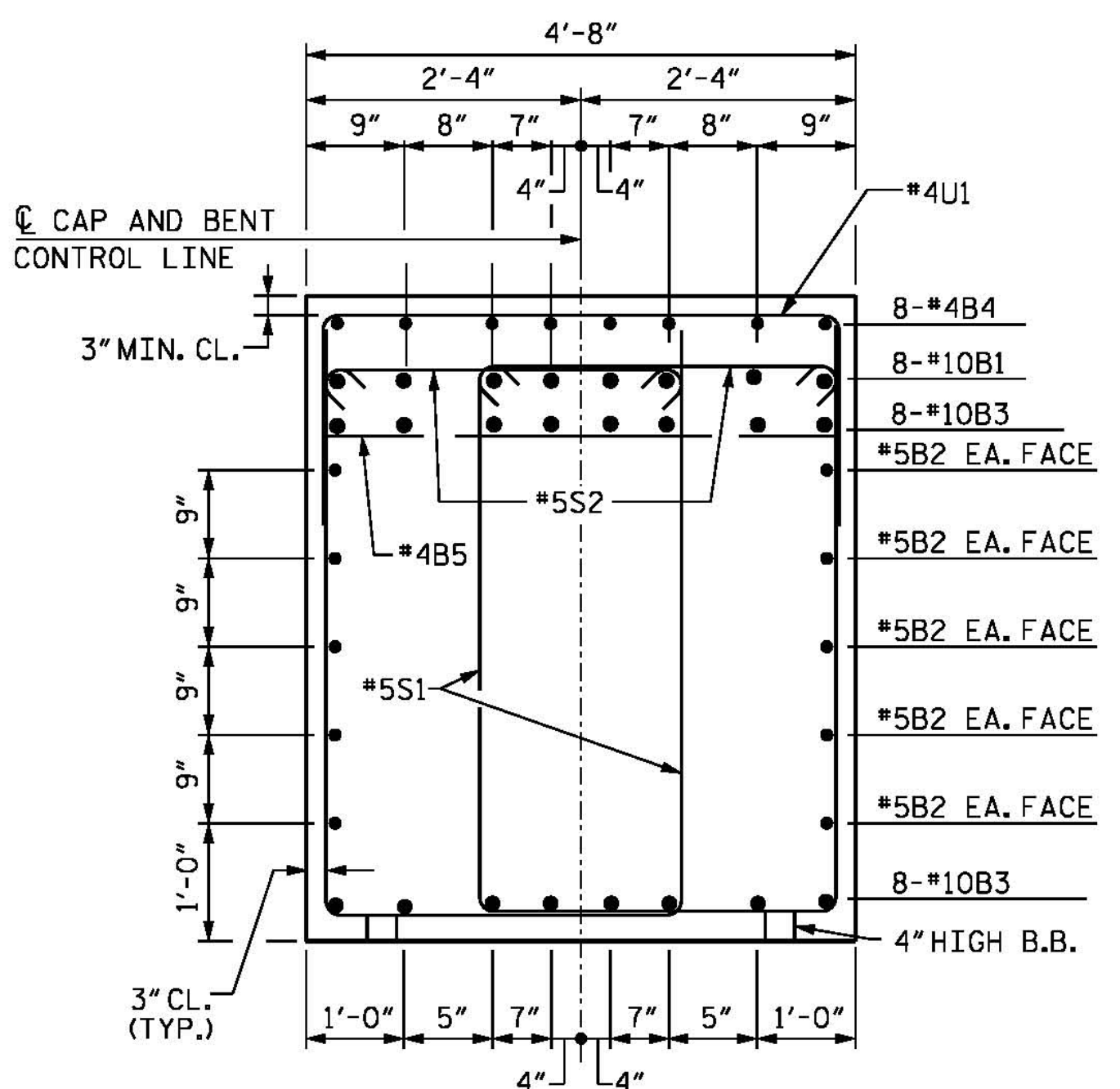
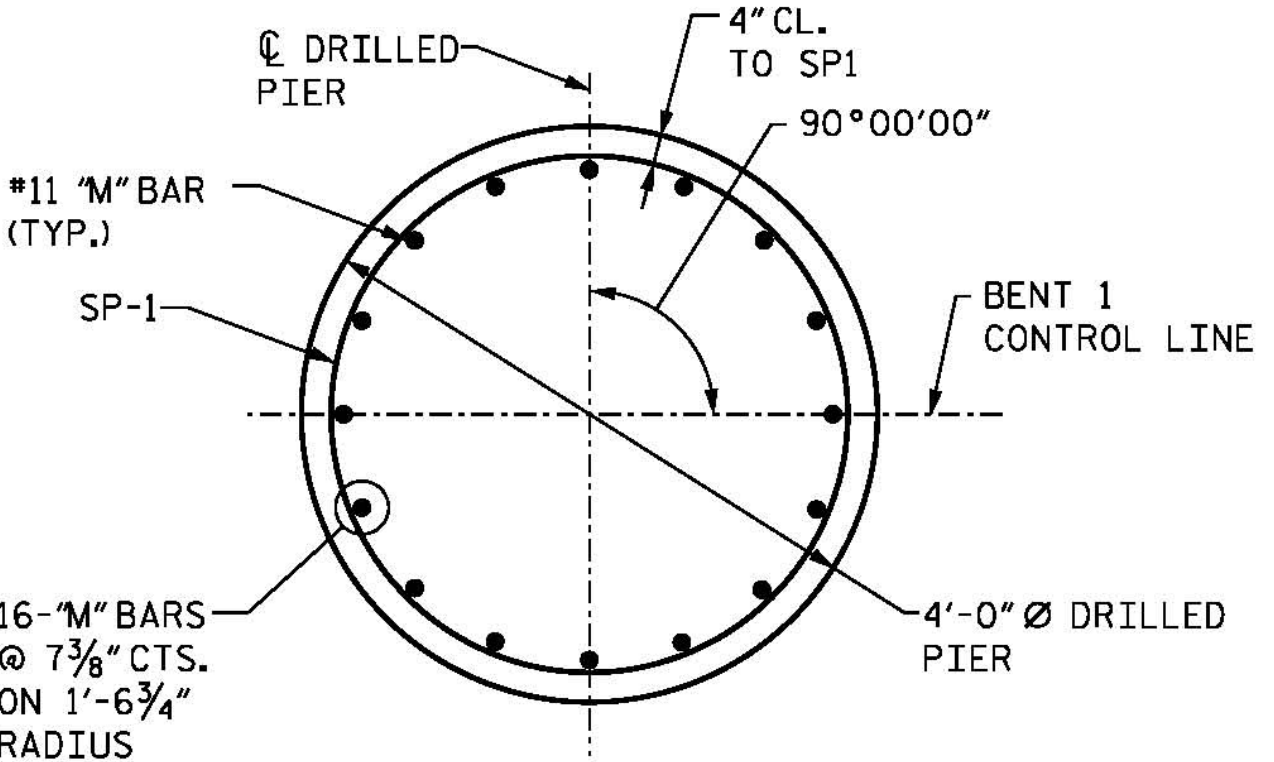


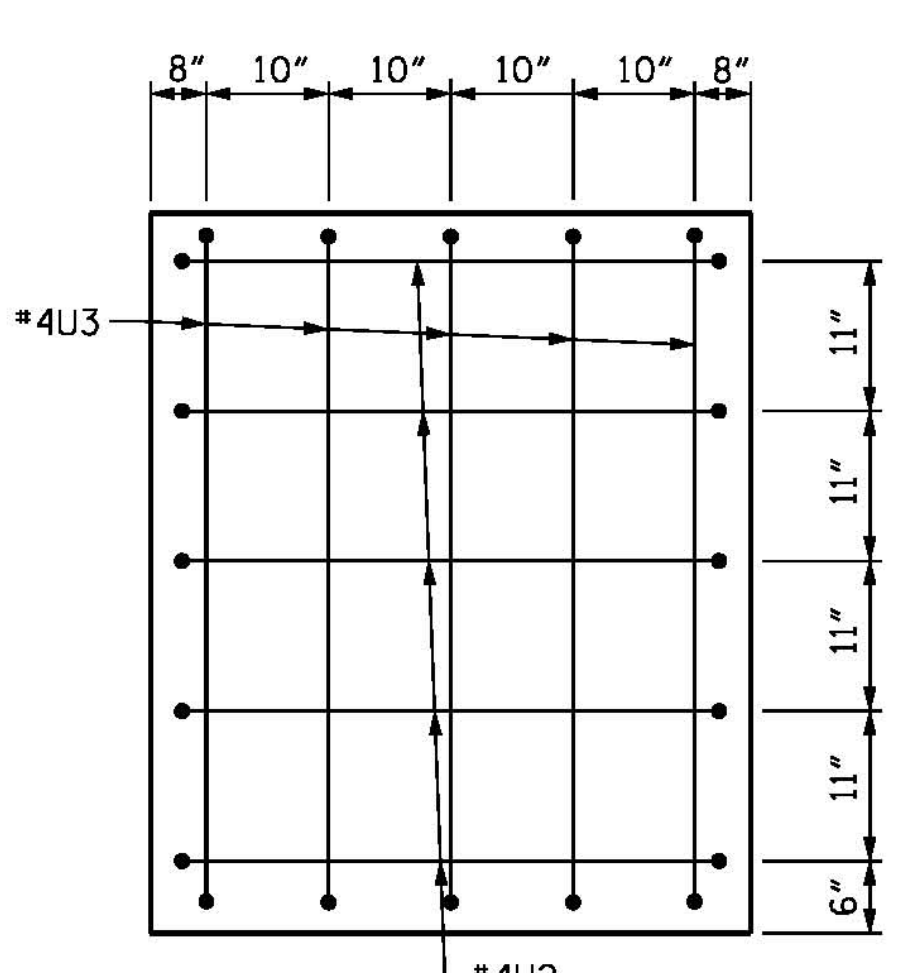
SECTION A-A



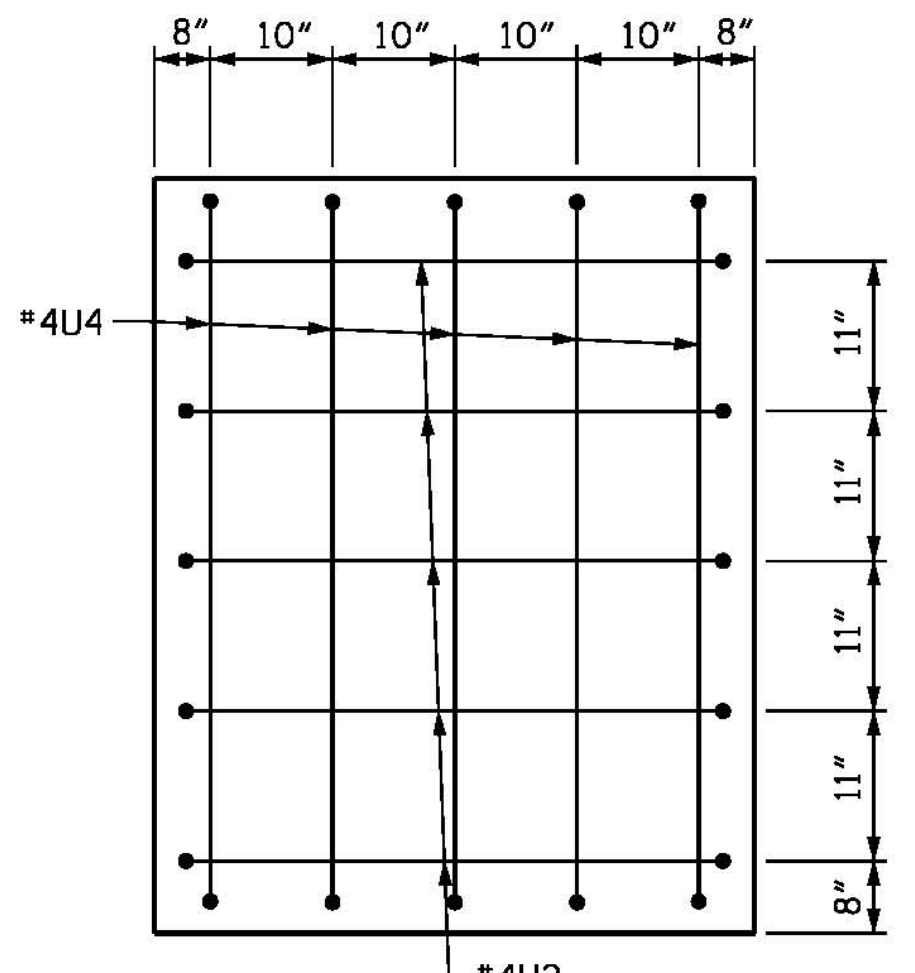
SECTION B-B



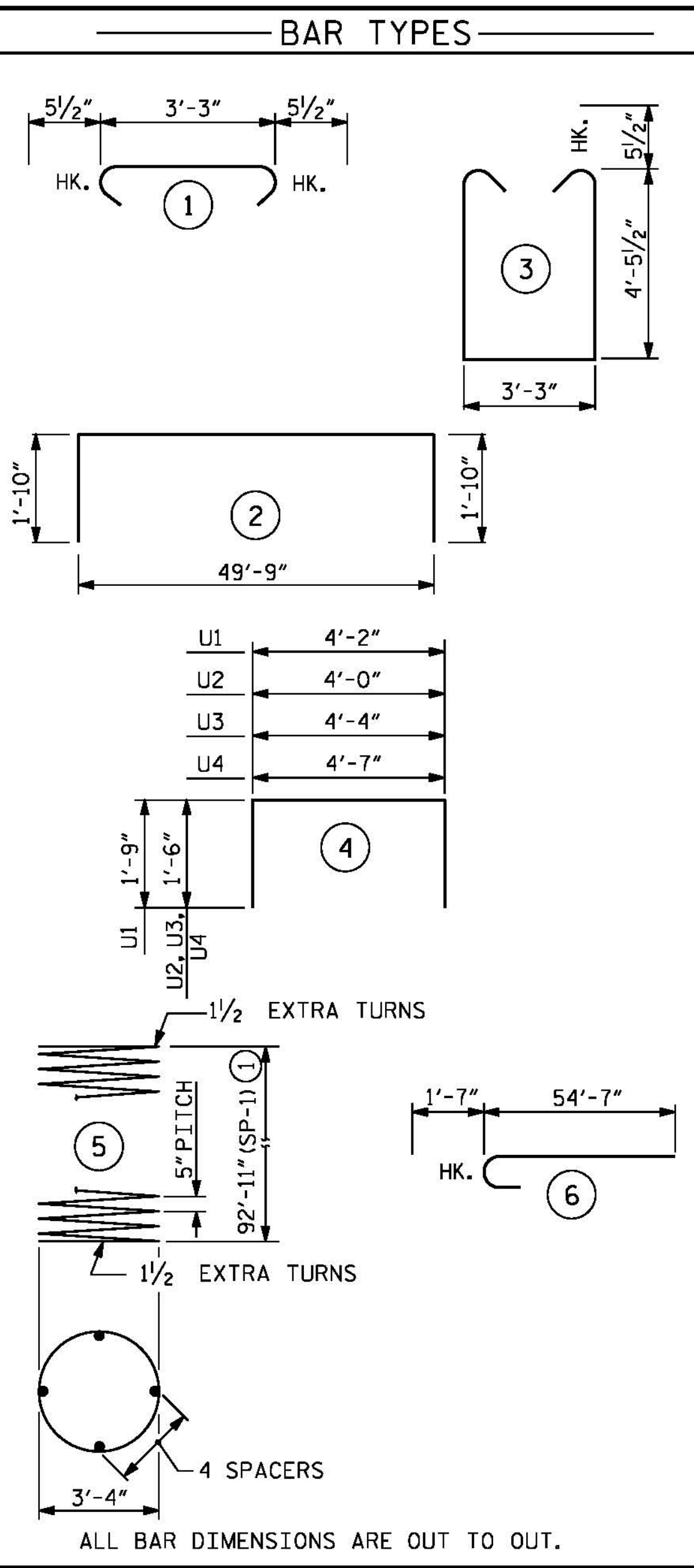
DRILLED PIER DETAIL



VIEW X-X

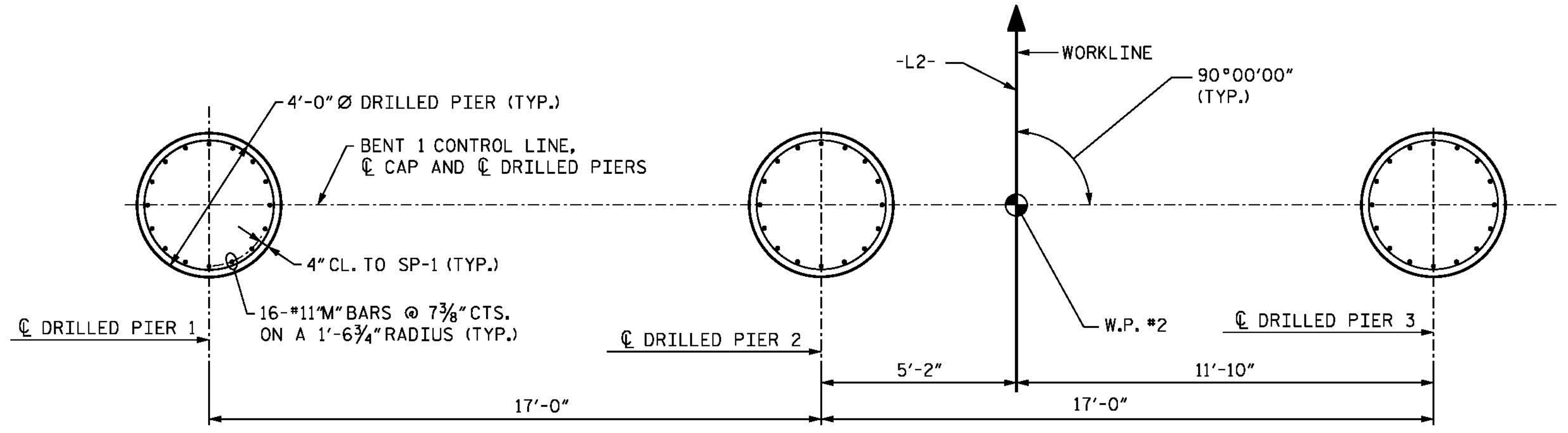


VIEW Y-Y



BILL OF MATERIAL						
BENT 1						
BAR	NUMBER	SIZE	TYPE	LENGTH	WEIGHT	
B1	8	#10	2	53'-5"	1839	
B2	10	#10	STR	49'-6"	516	
B3	16	#10	STR	49'-6"	3408	
B4	16	#4	STR	20'-7"	220	
B5	13	#4	STR	4'-2"	36	
M1	48	#11	6	56'-2"	14,324	
M2	48	#11	STR	54'-7"	13,920	
S1	196	#5	3	13'-1"	2675	
S2	196	#5	1	4'-2"	852	
U1	49	#4	4	7'-8"	251	
U2	10	#4	4	7'-0"	47	
U3	5	#4	4	7'-4"	24	
U4	5	#4	4	7'-7"	25	
EPOXY COATED REINFORCING STEEL				LBS.	38,137	
SP1	3	*	5	2341'-11"	7328	
EPOXY COATED SPIRAL REINFORCING STEEL				LBS.	7328	
CLASS "AA" CONCRETE BREAKDOWN						
POUR #2 - CAP					45.7	C.Y.
CLASS "AA" CONCRETE					45.7	C.Y.
DRILLED PIER QUANTITIES						
POUR #1 - DRILLED PIER CONCRETE					130.4	C.Y.
4'-0" Ø DRILLED PIERS					280.2	L.F.
PERMANENT STEEL CASING FOR 4'-0" Ø DRILLED PIERS					52.2	L.F.
SPT TESTING					1	EA.
SID INSPECTIONS					1	EA.
CSL TUBES					1140	L.F.

* THE SP-1 EPOXY COATED SPIRAL REINFORCING STEEL SHALL BE W31 OR D-31 COLD DRAWN WIRE OR #5 PLAIN OR DEFORMED BAR,
 (1) CONTRACTOR MAY PROVIDE 3'-0" MIN. SPLICE AT MID HEIGHT OF EPOXY COATED SPIRAL REINFORCING STEEL. NO ADDITIONAL PAYMENT WILL BE PROVIDED FOR SPLICES.

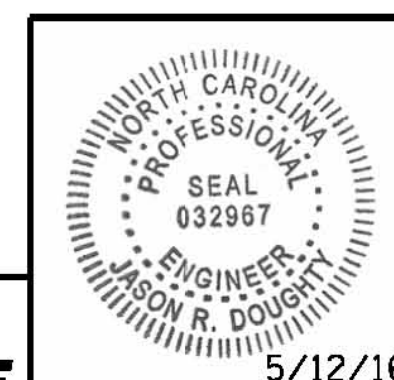


PLAN OF DRILLED PIERS

(REINFORCING STEEL ARE TYPICAL FOR EACH DRILLED PIER)

PROJECT NO. B-4929
PENDER COUNTY
 STATION: 38+13.81 -L2-
 SHEET 2 OF 2

STATE OF NORTH CAROLINA
 DEPARTMENT OF TRANSPORTATION
 RALEIGH
 SUBSTRUCTURE
 BENT 1
 SECTIONS AND DETAILS



PARSONS BRINCKERHOFF
 434 FAYETTEVILLE STREET
 SUITE 1500
 RALEIGH, NC 27601
 LICENSE NO. F-0165

DocuSigned by:
 Jason R. Doughty
 00F1C8648274F7...

REVISIONS					
NO.	BY:	DATE:	NO.	BY:	DATE:
1			3		
2			4		

SHEET NO.
S-153
 TOTAL SHEETS
 278

DOCUMENT NOT CONSIDERED FINAL UNLESS ALL SIGNATURES COMPLETED

5/10/2016 400_299_B4929_SMU_IB12.dgn

DESIGNED BY: MJW/AMD DATE: JAN. 2016
 DRAWN BY: B. CALDWELL DATE: FEB. 2016
 CHECKED BY: J. SHERMAN DATE: MAR. 2016
 DESIGN ENGINEER OF RECORD: J. DOUGHTY DATE: MAY 2016