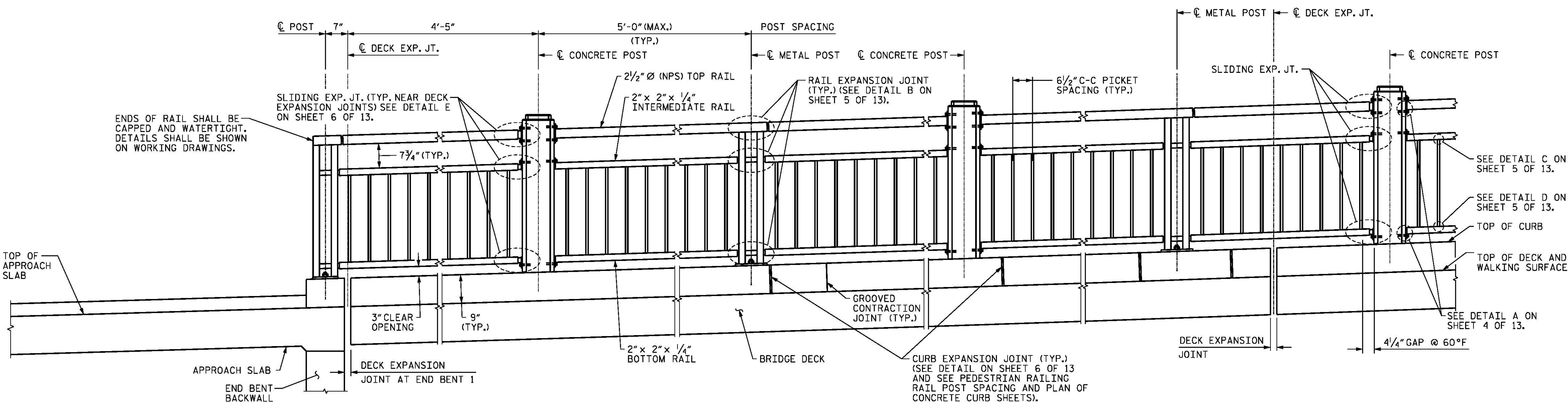


PLAN



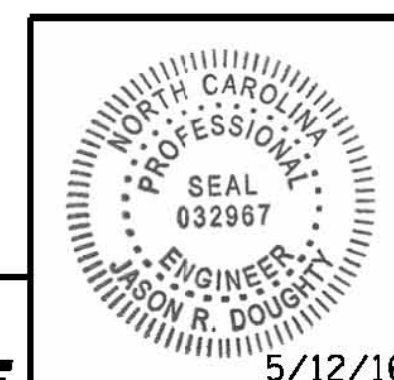
ELEVATION OF INSIDE FACE OF RAILING

END BENT 1 SHOWN, END BENT 2 SIMILAR

NOTES

- FOR NOTES SEE SHEET 1 OF 13.
- GROOVED CONTRACTION JOINTS, 1/2" IN DEPTH, SHALL BE TOOLED IN ALL EXPOSED FACES OF THE CURB IN ACCORDANCE WITH ARTICLE 825-10(B) OF THE STANDARD SPECIFICATIONS. THE CONTRACTION JOINT SHALL BE LOCATED AT A SPACING OF 8 FT. TO 10 FT. BETWEEN CURB EXPANSION JOINTS. NO CONTRACTION JOINTS WILL BE REQUIRED FOR SEGMENTS LESS THAN 10 FEET IN LENGTH.
- FOR CONCRETE POST, METAL POST AND CURB LAYOUT, SEE PEDESTRIAN RAILING RAIL POST SPACING AND PLAN OF CONCRETE CURB SHEETS.
- DECK EXPANSION JOINT DETAILS NOT SHOWN FOR CLARITY.
- THE CURB IN EACH SPAN SHALL NOT BE CAST UNTIL ALL SLAB CONCRETE IN THAT SPAN HAS BEEN CAST AND HAS REACHED A MINIMUM COMPRESSIVE STRENGTH OF 3,000 PSI.

PROJECT NO. B-4929
PENDER COUNTY
 STATION: 38+13.81 -L2-
 SHEET 2 OF 13



PARSONS BRINCKERHOFF
 434 FAYETTEVILLE STREET
 SUITE 1500
 RALEIGH, NC 27601
 LICENSE NO. F-0165

DocuSigned by:
 Jason R. Doughty
 00F1C86448274F7...

STATE OF NORTH CAROLINA
 DEPARTMENT OF TRANSPORTATION
 RALEIGH
 SUPERSTRUCTURE
 PEDESTRIAN RAILING
 PLAN AND ELEVATION

DESIGNED BY:	JRD / EMD	DATE :	OCT 2015
DRAWN BY:	K. WHITE	DATE :	OCT 2015
CHECKED BY:	J. SHERMAN	DATE :	JAN 2016
DESIGN ENGINEER OF RECORD:	J. DOUGHTY	DATE :	MAY 2016

DOCUMENT NOT CONSIDERED FINAL UNLESS ALL SIGNATURES COMPLETED				REVISIONS				SHEET NO.
NO.	BY:	DATE:	NO.	BY:	DATE:		S-120	
1			3			TOTAL SHEETS	278	
2			4					

5/10/2016 400_237_B4929_SMU_PED02.dgn