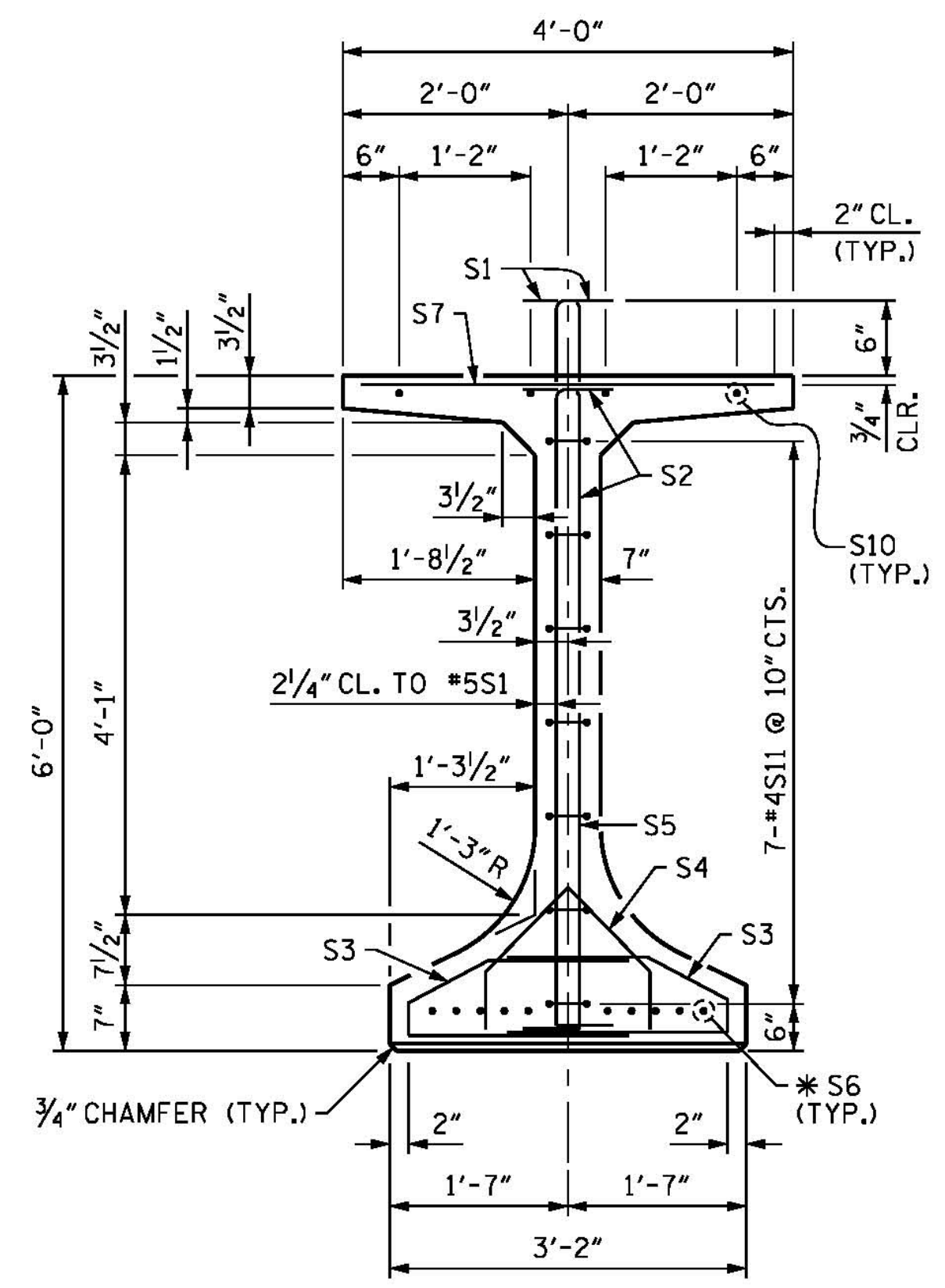
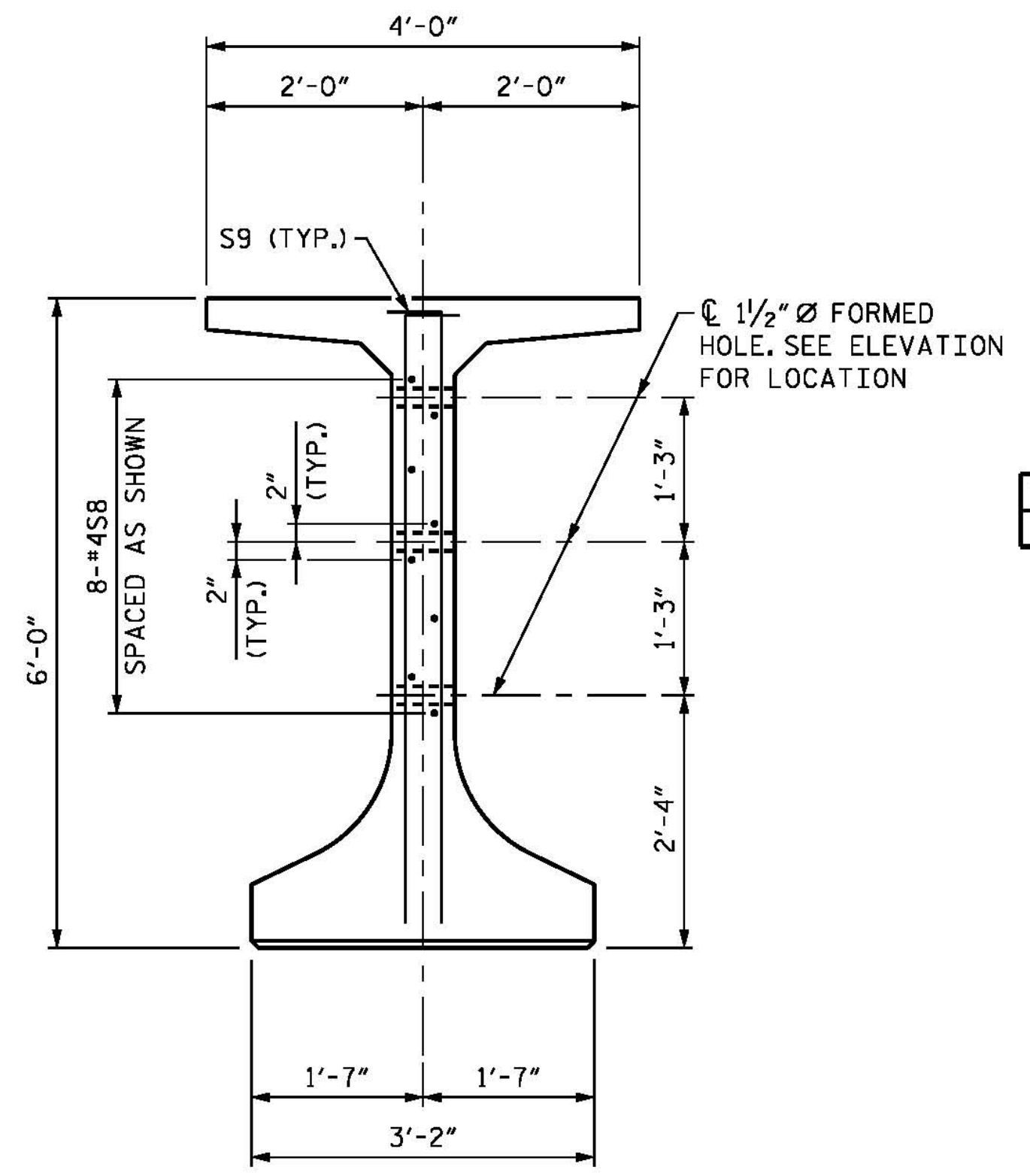


SECTION A-A

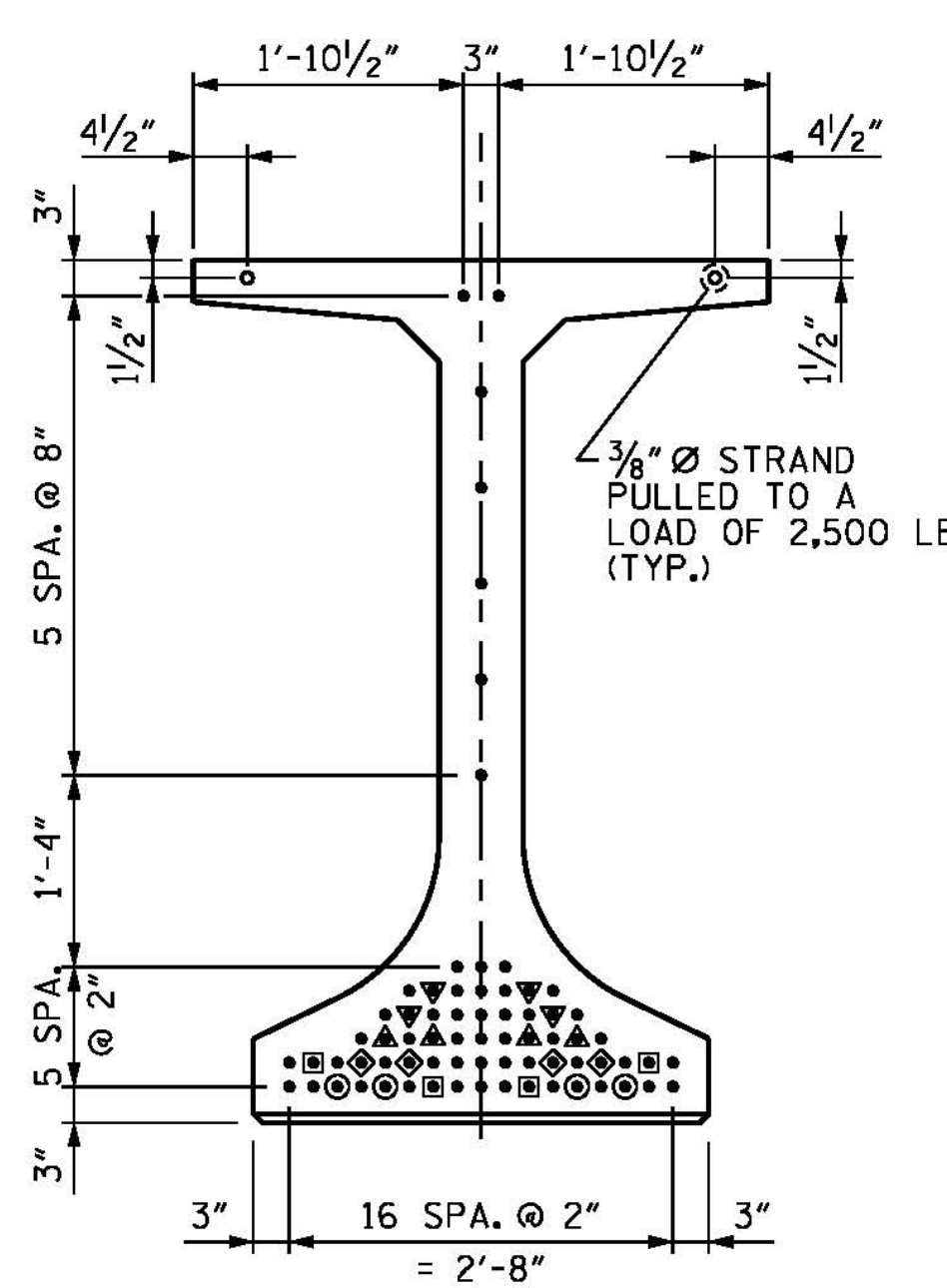


SECTION B-B

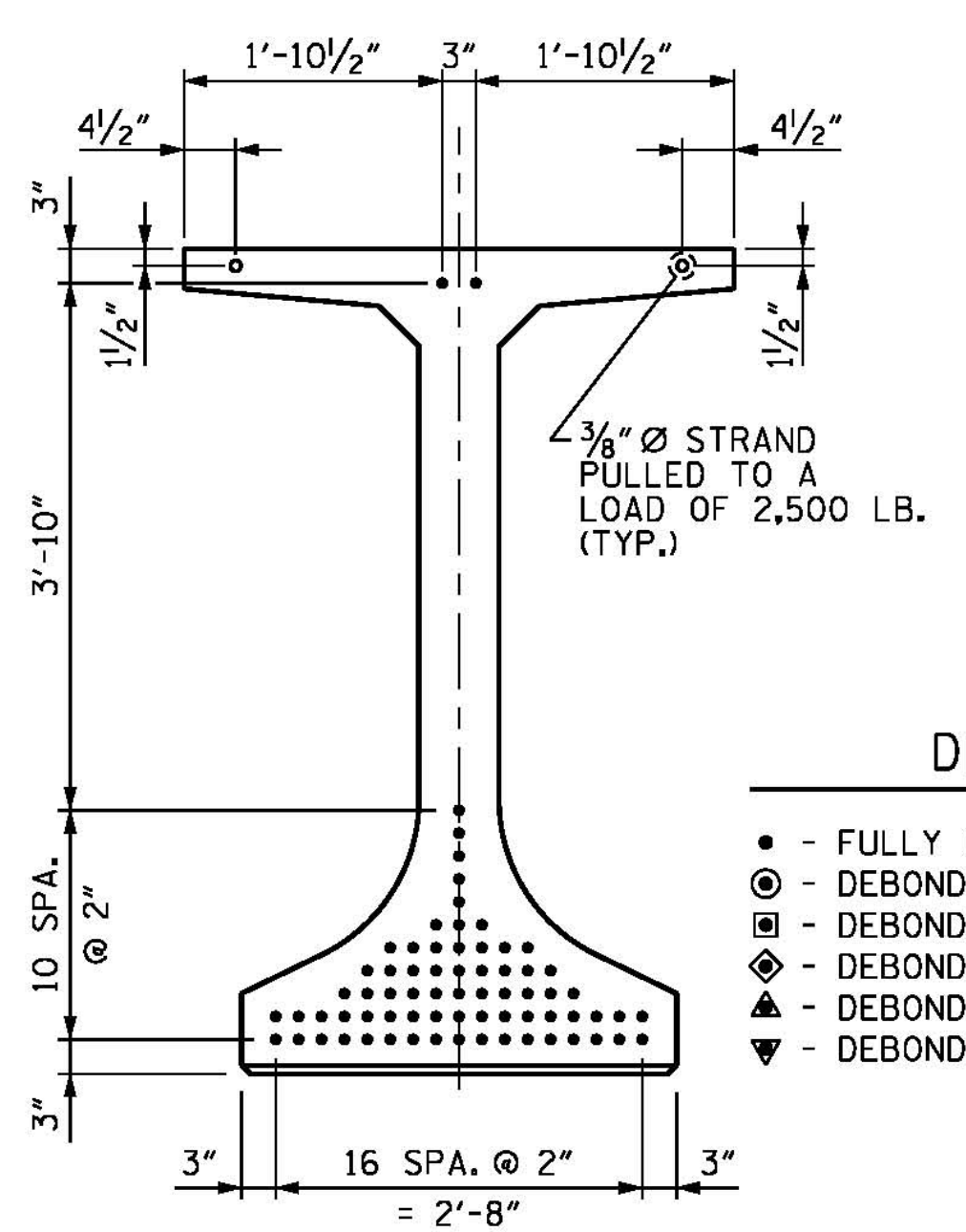


SECTION C-C

(S1, S3 AND S7 BARS NOT SHOWN)



AT END OF GIRDER



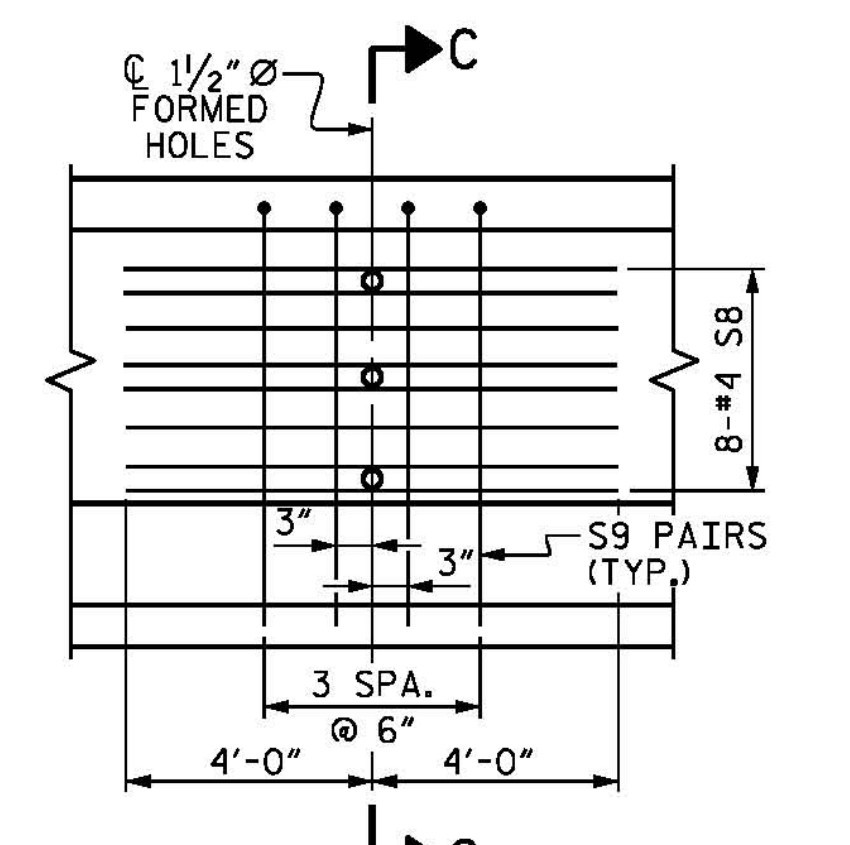
AT CL OF GIRDER

0.6" Ø LOW RELAXATION STRAND LAYOUT

(71 STRANDS REQUIRED)

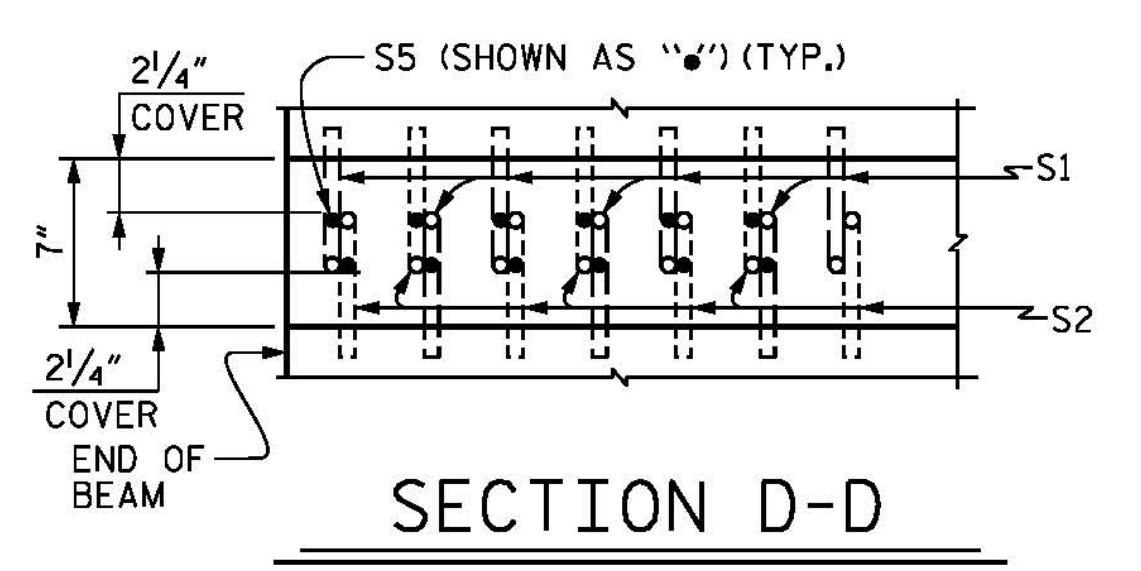
DEBONDING LEGEND

- - FULLY BONDED STRANDS
- ⊙ - DEBONDED FOR 20'-0" FROM END OF GIRDER
- ⊠ - DEBONDED FOR 16'-0" FROM END OF GIRDER
- ◇ - DEBONDED FOR 12'-0" FROM END OF GIRDER
- ▲ - DEBONDED FOR 8'-0" FROM END OF GIRDER
- ▼ - DEBONDED FOR 4'-0" FROM END OF GIRDER



PARTIAL ELEVATION

SHOWING INTERMEDIATE STEEL DIAPHRAGM REINFORCING STEEL FOR ALL SPANS.



SECTION D-D

0.6" Ø L. R. GRADE 270 STRANDS

AREA (SQ. INCHES)	ULTIMATE STRENGTH (LBS. PER STRAND)	APPLIED PRESTRESS (LBS. PER STRAND)
0.217	58,600	43,950

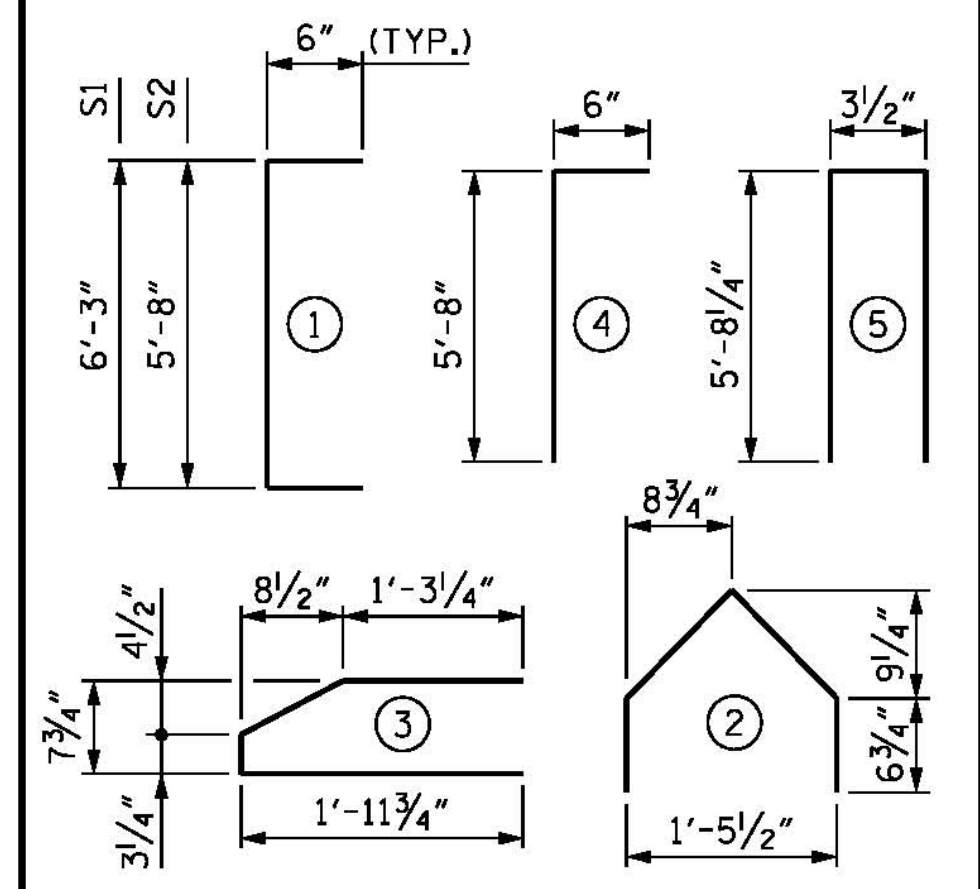
REINFORCING STEEL FOR ONE GIRDER

BAR	NUMBER	SIZE	TYPE	LENGTH	WEIGHT
S1	209	#5	1	7'-3"	1580
S2	114	#5	1	6'-8"	793
S3	246	#3	3	4'-4"	401
S4	42	#3	2	3'-3"	51
S5	24	#5	STR	5'-6"	138
S6	10	#5	STR	3'-8"	38
S7	157	#4	STR	3'-8"	385
S8	16	#4	STR	8'-0"	86
S9	16	#4	4	6'-2"	66
S10	8	#6	STR	26'-0"	312
S11	14	#4	5	11'-8"	109

* NOTE: S6 BARS SHALL BE BENT BEFORE SHIPMENT. HEAT BENDING SHALL NOT BE ALLOWED.

BAR TYPES

ALL BAR DIMENSIONS ARE OUT-TO-OUT



QUANTITIES FOR ONE GIRDER

REINFORCING STEEL	10,000 PSI CONCRETE	0.6" Ø L.R. STRANDS
LB.	C.Y.	NO.
3959	38.33	71
3997	38.33	71

GIRDERS REQUIRED

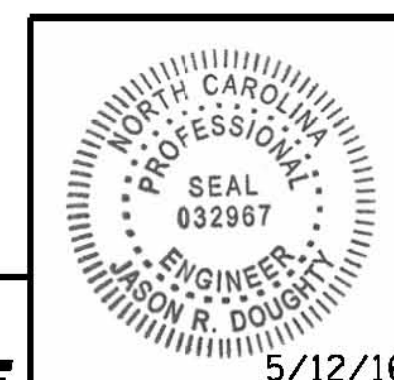
NUMBER	LENGTH	TOTAL LENGTH
30	140.77'	4223.13'

PROJECT NO. B-4929

PENDER COUNTY

STATION: 38+13.81 -L2-

SHEET 4 OF 4



DocuSigned by: Jason R. Doughty 5/12/16

PARSONS BRINCKERHOFF
434 FAYETTEVILLE STREET
SUITE 1500
RALEIGH, NC 27601
LICENSE NO. F-0165

DOCUMENT NOT CONSIDERED FINAL UNLESS ALL SIGNATURES COMPLETED

STATE OF NORTH CAROLINA
DEPARTMENT OF TRANSPORTATION
RALEIGH
SUPERSTRUCTURE
F.I.B. 72"
PRESTRESSED
CONCRETE GIRDER
(SPANS D, E, F, J, K AND L)

REVISIONS				SHEET NO.	
NO.	BY:	DATE:	NO.	BY:	DATE:
1			3		
2			4		

S-78
TOTAL SHEETS 278

5/10/2016 400_153_B4929_SMJ_FIB72_04.dgn

DESIGNED BY: J. BORUTA DATE: JAN 2016
DRAWN BY: KEW/MAH DATE: JAN 2016
CHECKED BY: B. LOFLIN DATE: FEB 2016
DESIGN ENGINEER OF RECORD: J. DOUGHTY DATE: MAY 2016