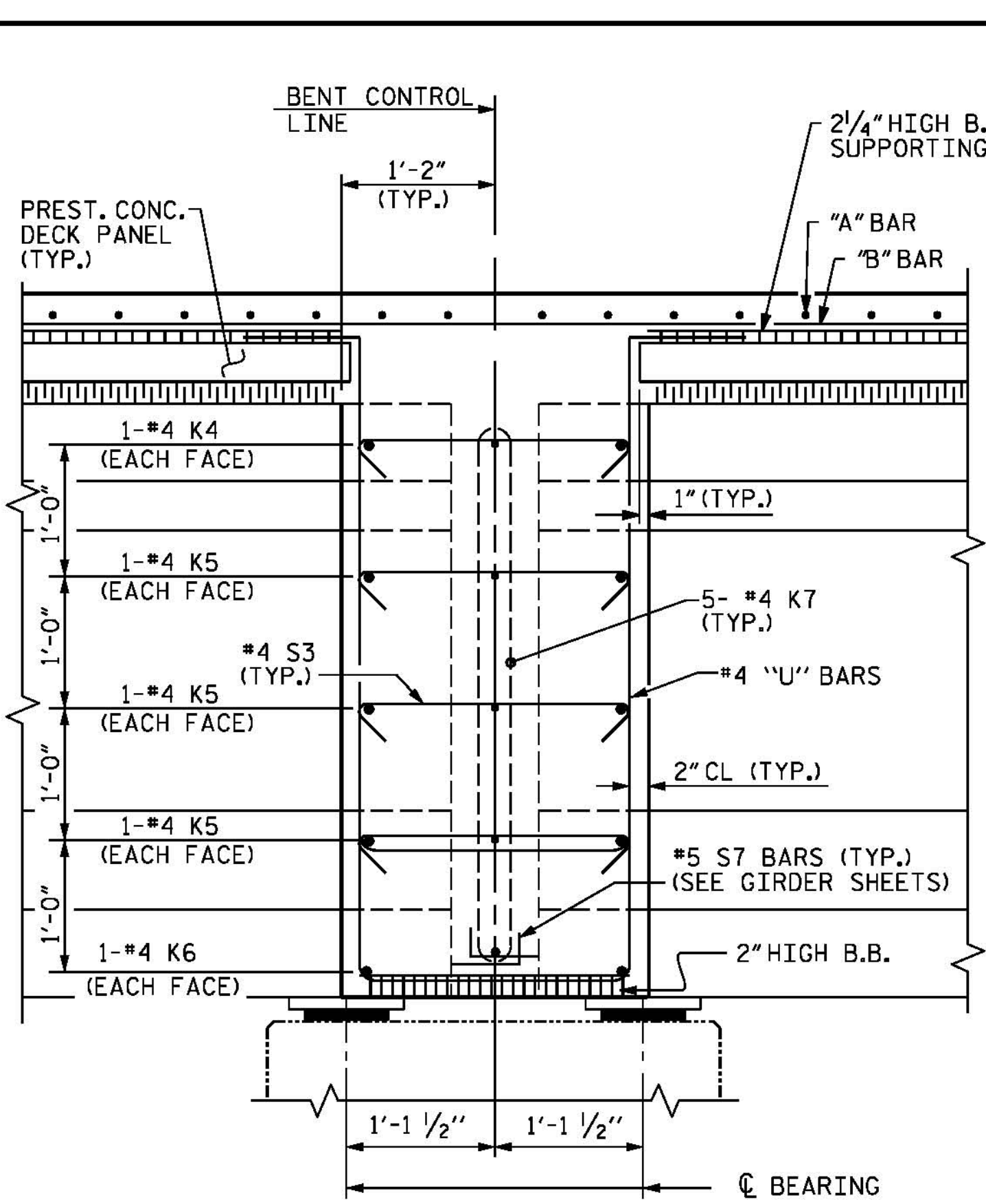
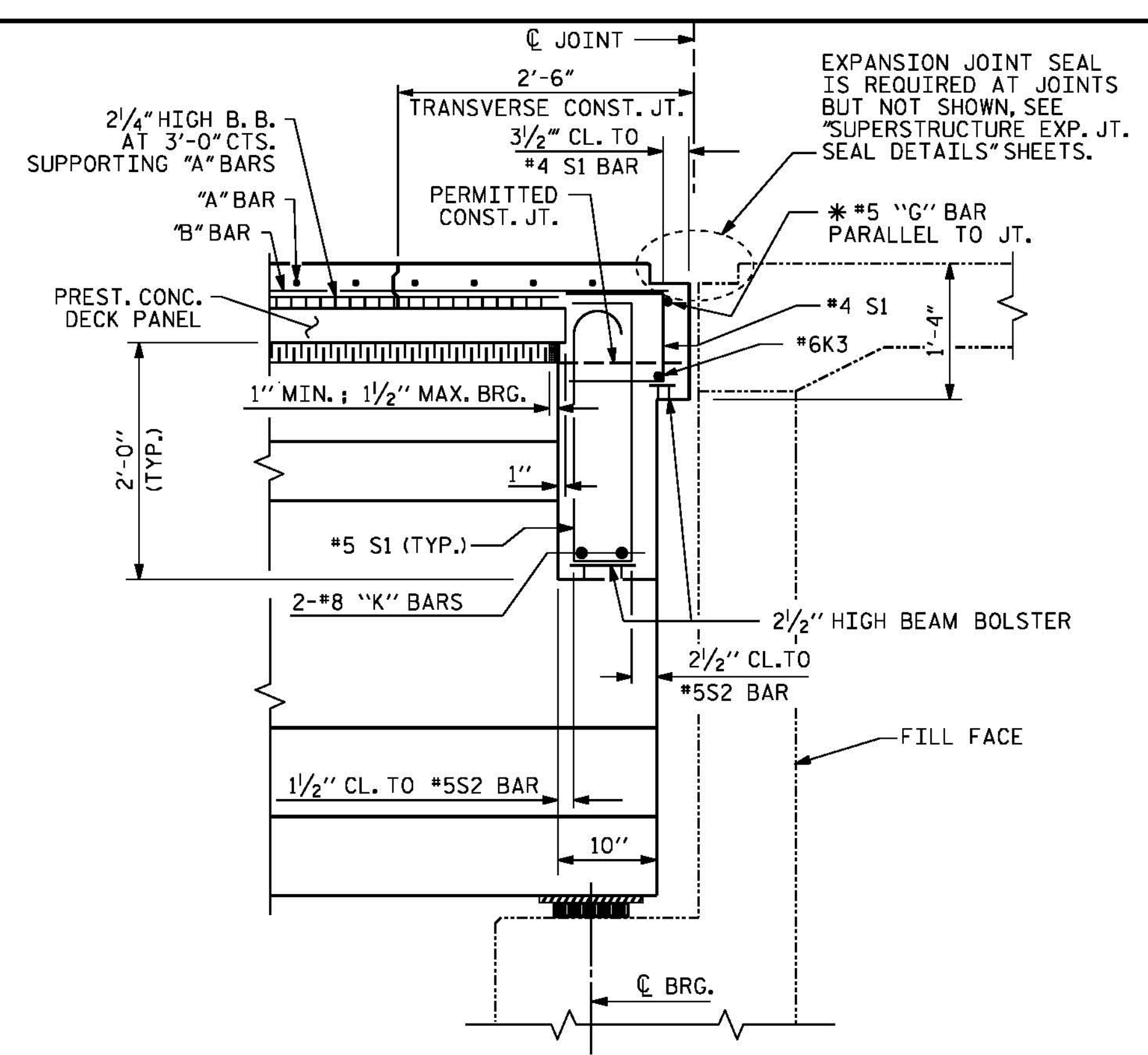


SECTION AT BENT DIAPHRAGM

* #5G BAR MAY BE SHIFTED SLIGHTLY, AS NECESSARY, TO CLEAR REINFORCING STEEL AND STIRRUPS.

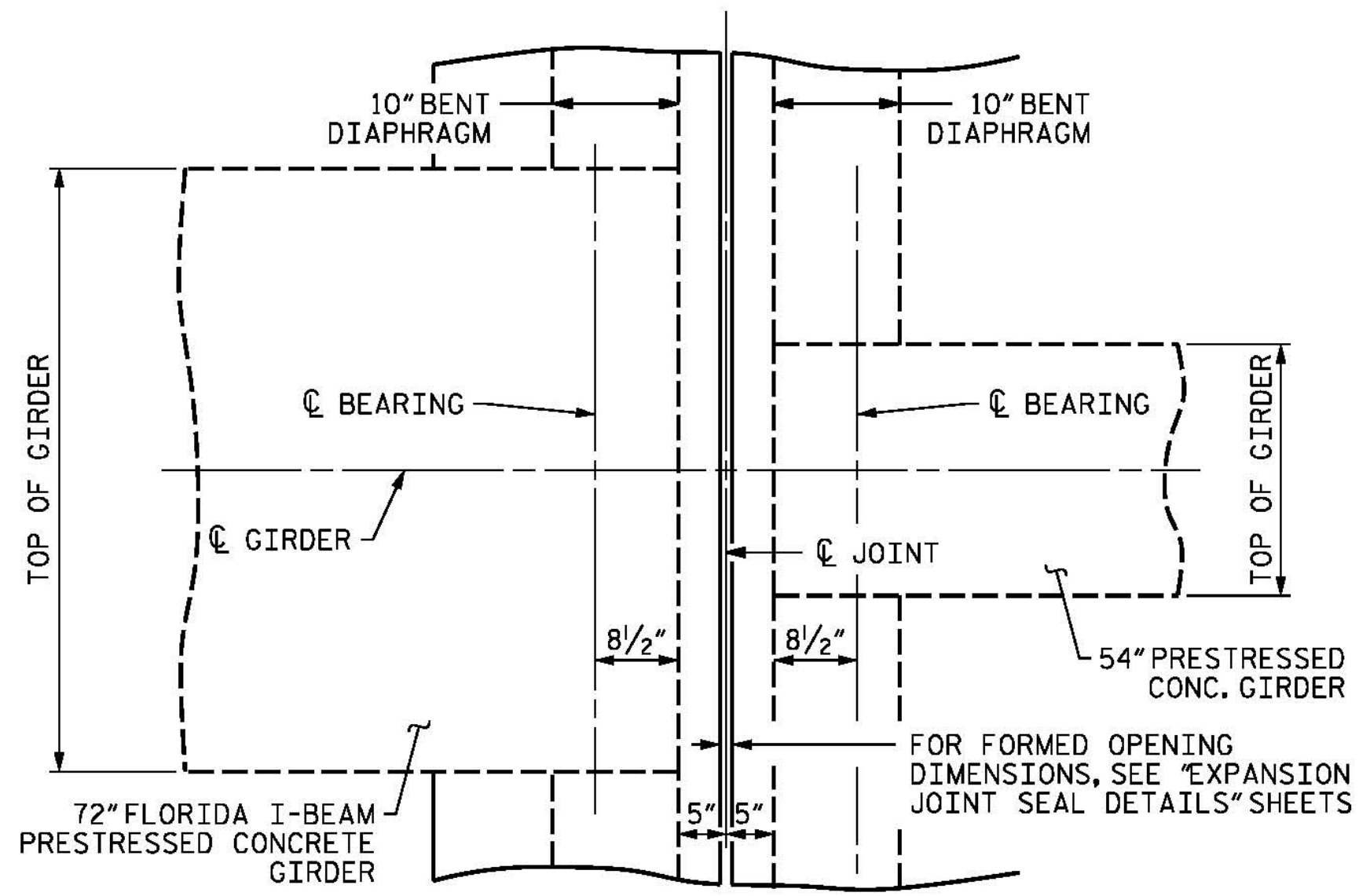


SECTION AT CONTINUOUS BENT DIAPHRAGM

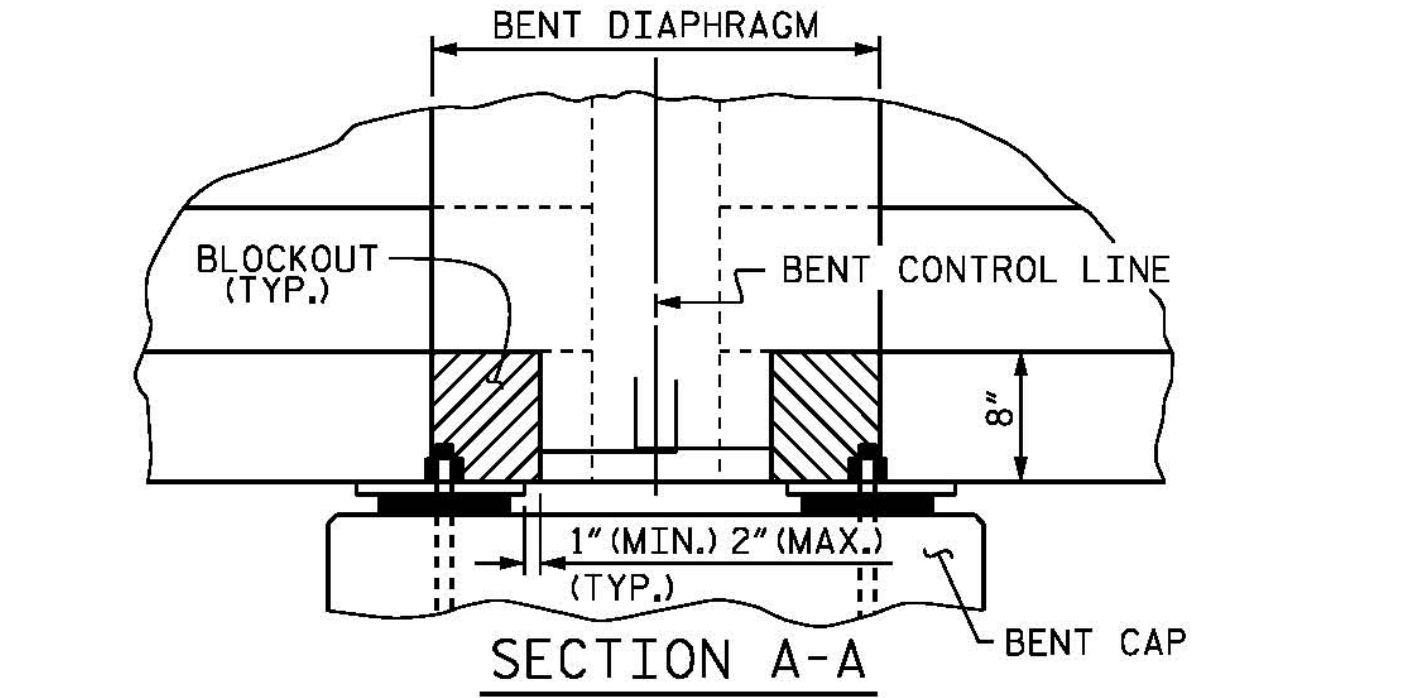


SECTION AT END BENT DIAPHRAGM

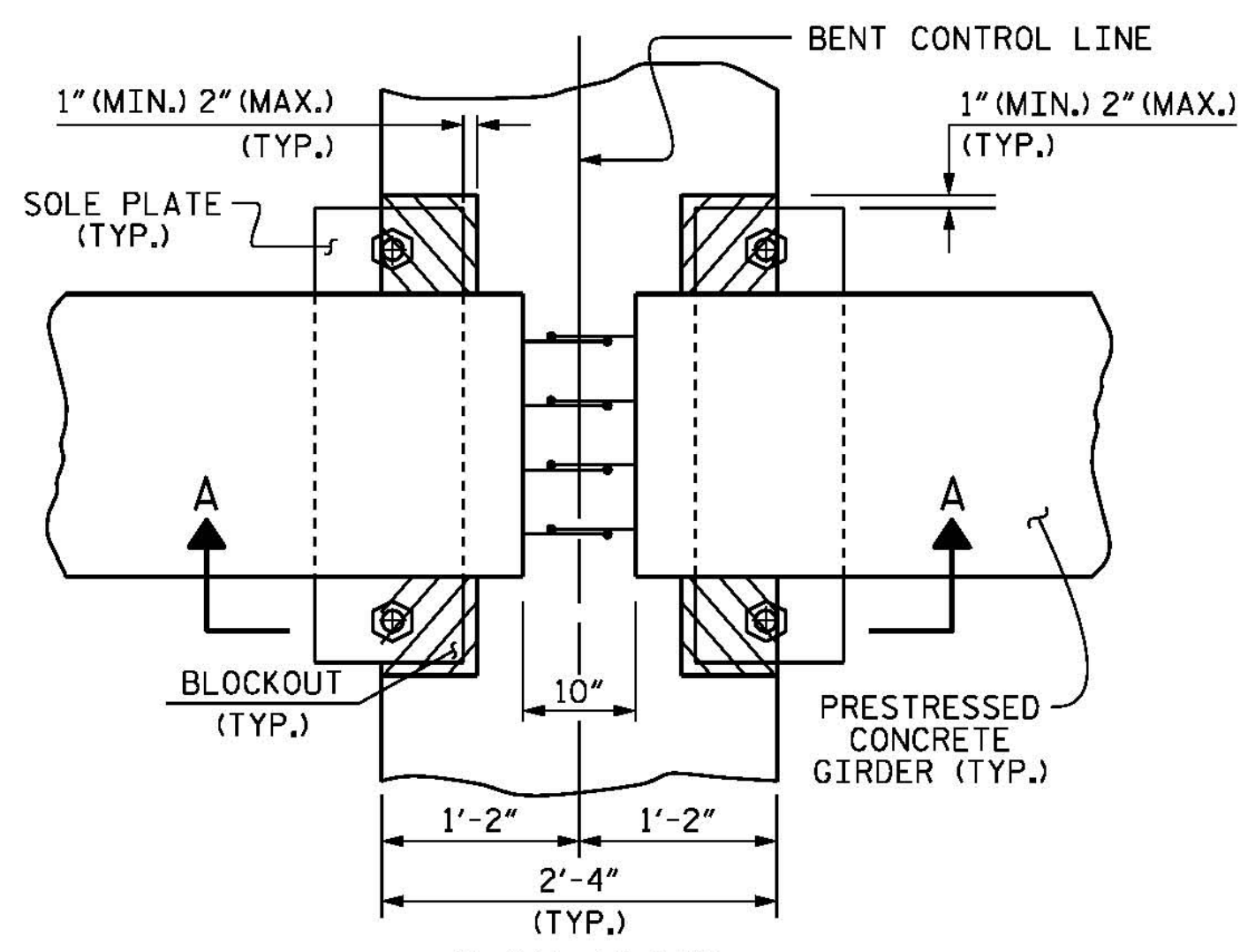
* #5G BAR MAY BE SHIFTED SLIGHTLY, AS NECESSARY, TO CLEAR REINFORCING STEEL AND STIRRUPS.



SECTION AT BENT DIAPHRAGM

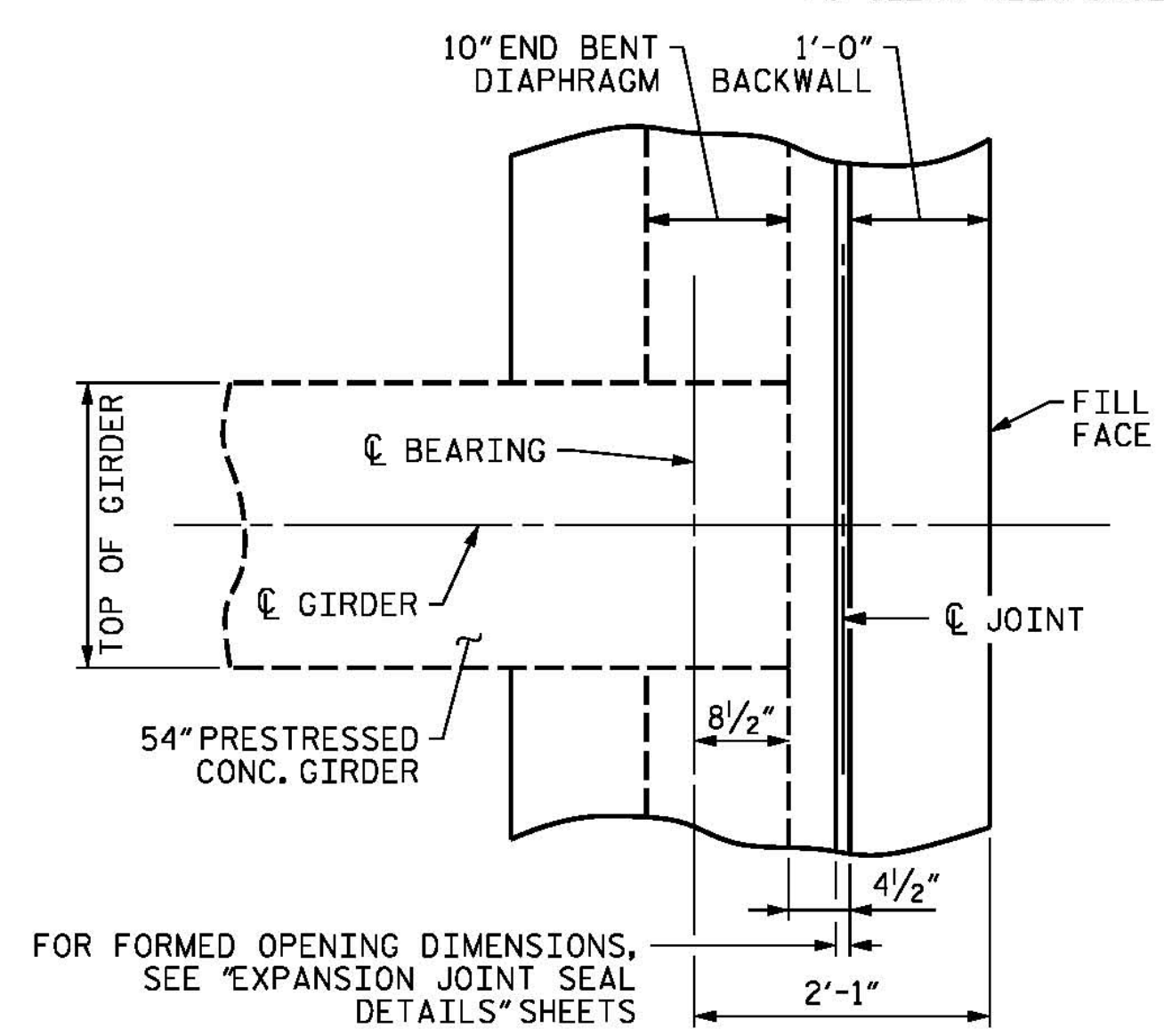


SECTION A-A



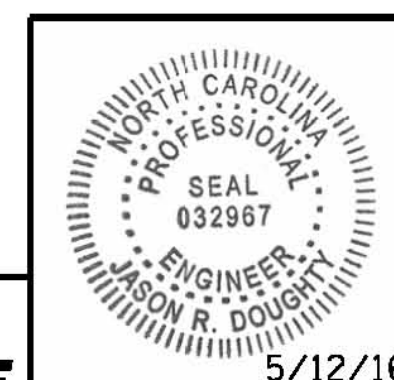
PLAN VIEW

BENT DIAPHRAGM BLOCKOUT DETAIL



SECTION AT END BENT DIAPHRAGM

PROJECT NO. B-4929
PENDER COUNTY
 STATION: 38+13.81 -L2-
 SHEET 12 OF 13



DocuSigned by:
 Jason R. Doughty
 00F1C8648274F7...

STATE OF NORTH CAROLINA
 DEPARTMENT OF TRANSPORTATION
 RALEIGH
 SUPERSTRUCTURE
 TYPICAL SECTION
 DETAILS
 SPANS AA, AB AND AC

REVISIONS						SHEET NO.
NO.	BY:	DATE:	NO.	BY:	DATE:	S-43
1			3			TOTAL SHEETS
2			4			278

PARSONS BRINCKERHOFF
 434 FAYETTEVILLE STREET
 SUITE 1500
 RALEIGH, NC 27601
 LICENSE NO. F-0165

**DOCUMENT NOT CONSIDERED FINAL
 UNLESS ALL SIGNATURES COMPLETED**

5/9/2016
 400_083_B4929_SMU_TYPD5.dgn

DESIGNED BY: J. BORUTA DATE: NOV 2015
 DRAWN BY: M. HOBBS DATE: NOV 2015
 CHECKED BY: E. DAVIS DATE: FEB 2016
 DESIGN ENGINEER OF RECORD: J. DOUGHTY DATE: MAY 2016