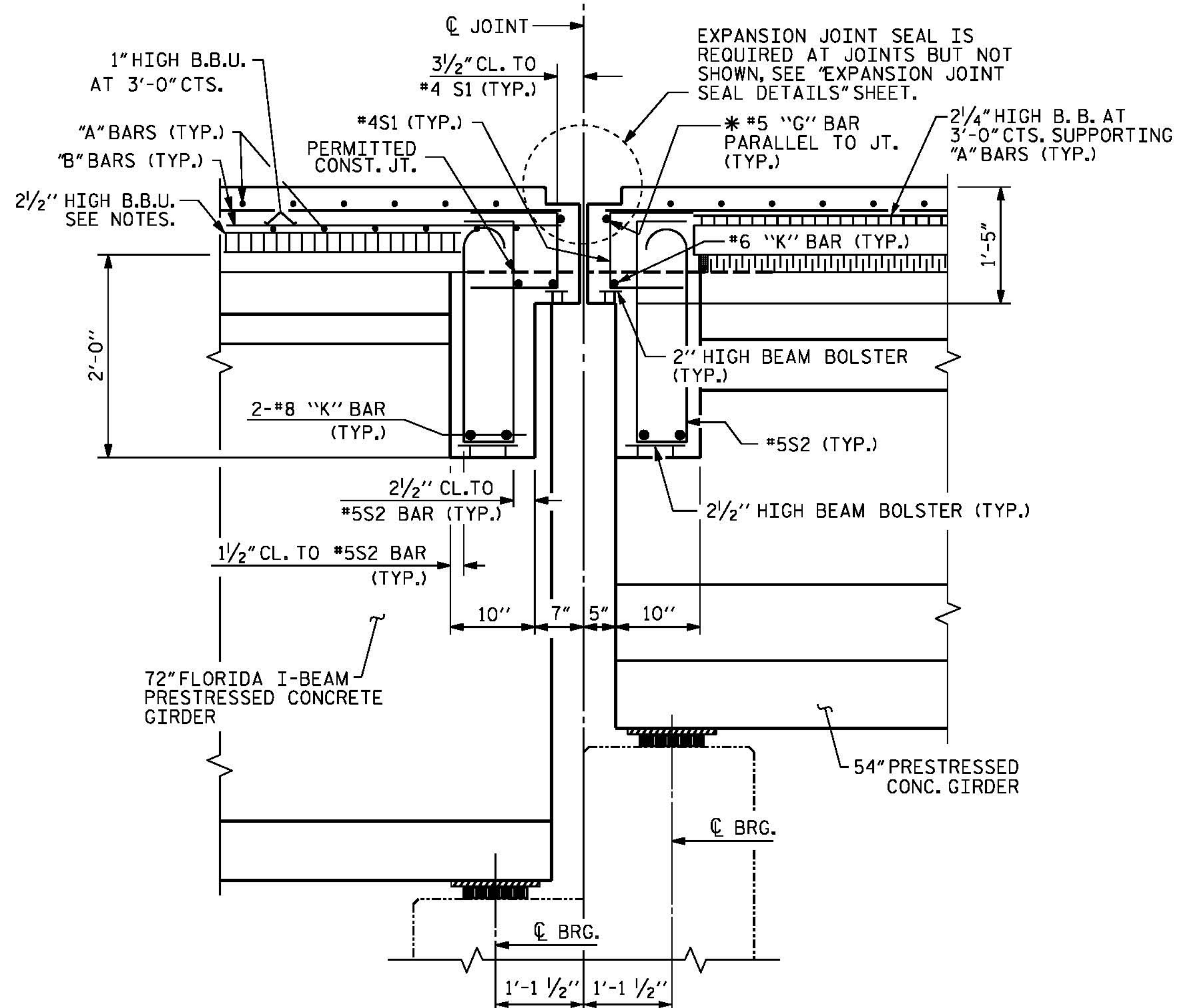


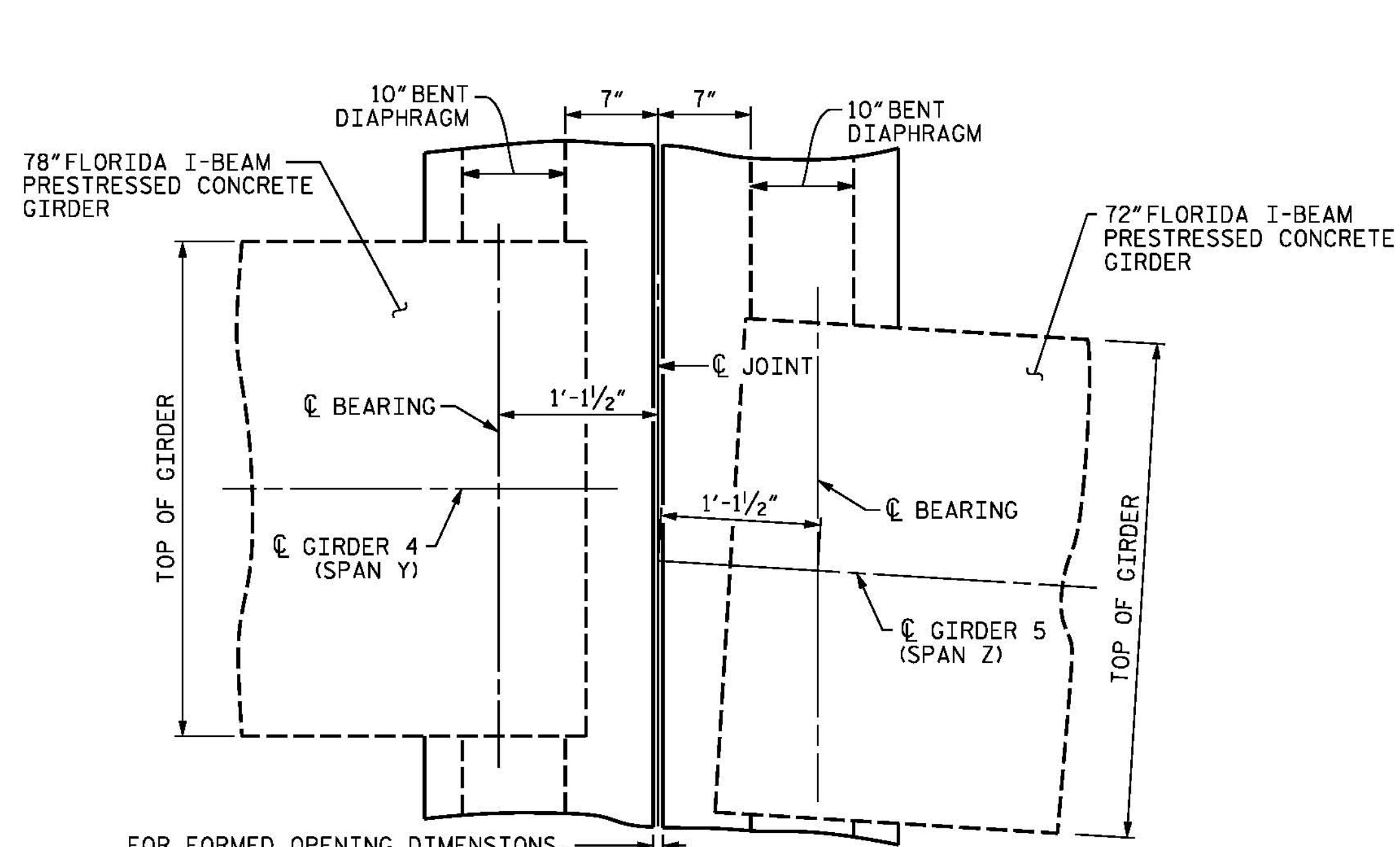
**SECTION AT BENT DIAPHRAGM**

\* #5G BAR MAY BE SHIFTED SLIGHTLY, AS NECESSARY, TO CLEAR REINFORCING STEEL AND STIRRUPS.



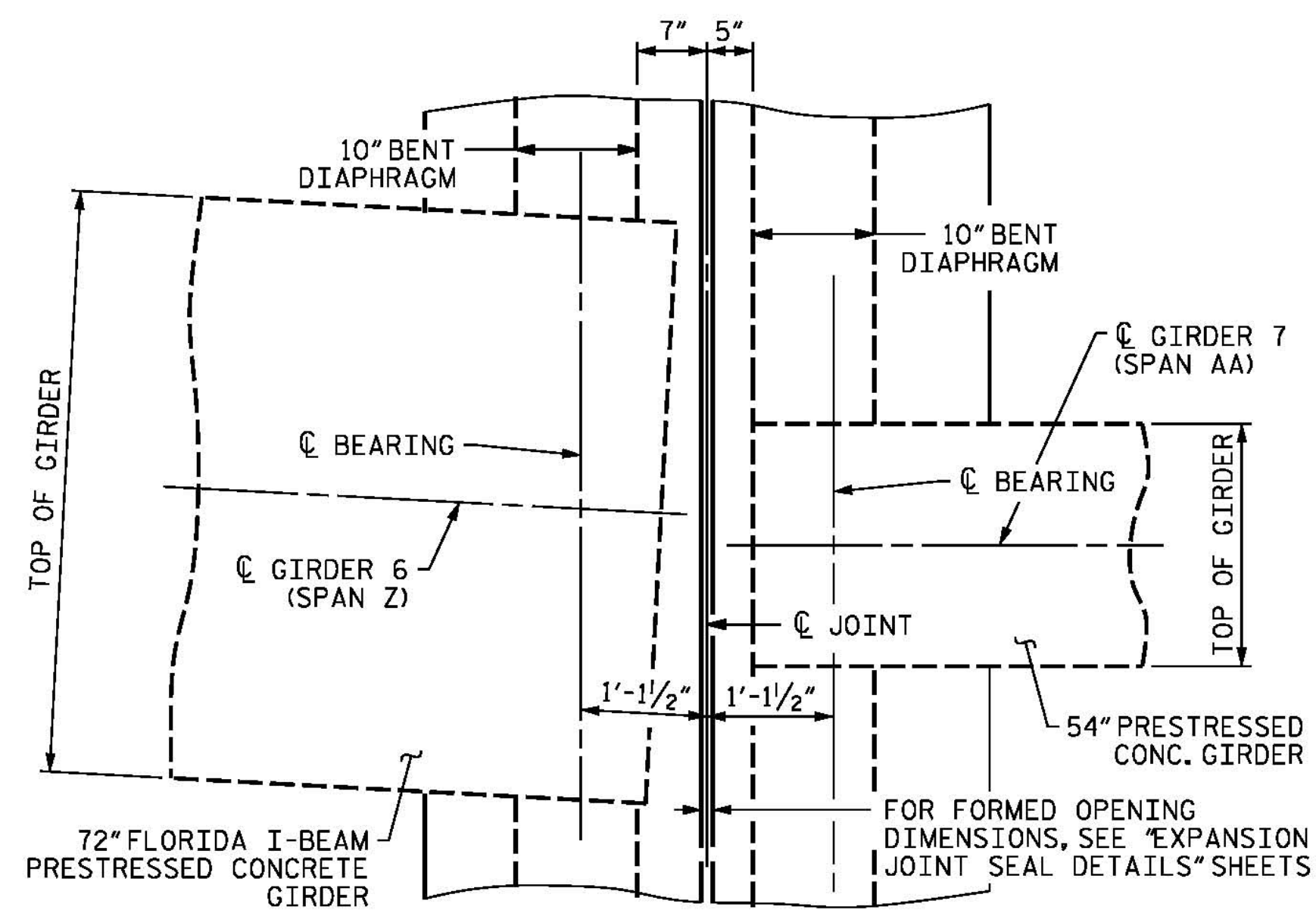
**SECTION AT BENT DIAPHRAGM**

\* #5G BAR MAY BE SHIFTED SLIGHTLY, AS NECESSARY, TO CLEAR REINFORCING STEEL AND STIRRUPS.



**PLAN VIEW AT BENT DIAPHRAGM**

LOCATIONS VARY FROM GIRDER TO GIRDER BETWEEN SPANS, SEE "PLAN OF SPANS"



**PLAN VIEW AT BENT DIAPHRAGM**

LOCATIONS VARY FROM GIRDER TO GIRDER BETWEEN SPANS, SEE "PLAN OF SPANS"

PROJECT NO. B-4929

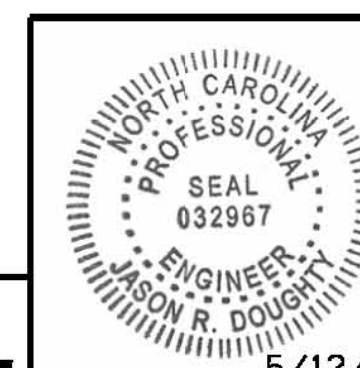
PENDER COUNTY

STATION: 38+13.81 -L2-

SHEET 11 OF 13

STATE OF NORTH CAROLINA  
DEPARTMENT OF TRANSPORTATION  
RALEIGH

SUPERSTRUCTURE  
TYPICAL SECTION  
DETAILS  
SPAN Z



DocuSigned by:  
*Jason R. Doughty*  
00F1C86448274F7...

5/12/16

DESIGNED BY: J. SMITH DATE: MAR 2016  
DRAWN BY: M. HOBBS DATE: MAR 2016  
CHECKED BY: E. DAVIS DATE: MAR 2016  
DESIGN ENGINEER OF RECORD: J. DOUGHTY DATE: MAY 2016

**PARSONS BRINCKERHOFF**  
434 FAYETTEVILLE STREET  
SUITE 1500  
RALEIGH, NC 27601  
LICENSE NO. F-0165

**DOCUMENT NOT CONSIDERED FINAL  
UNLESS ALL SIGNATURES COMPLETED**

REVISIONS						SHEET NO.
NO.	BY:	DATE:	NO.	BY:	DATE:	S-42
1			3			TOTAL SHEETS
2			4			278

5/9/2016 400\_081\_B4929\_SMU\_TYPD4.dgn