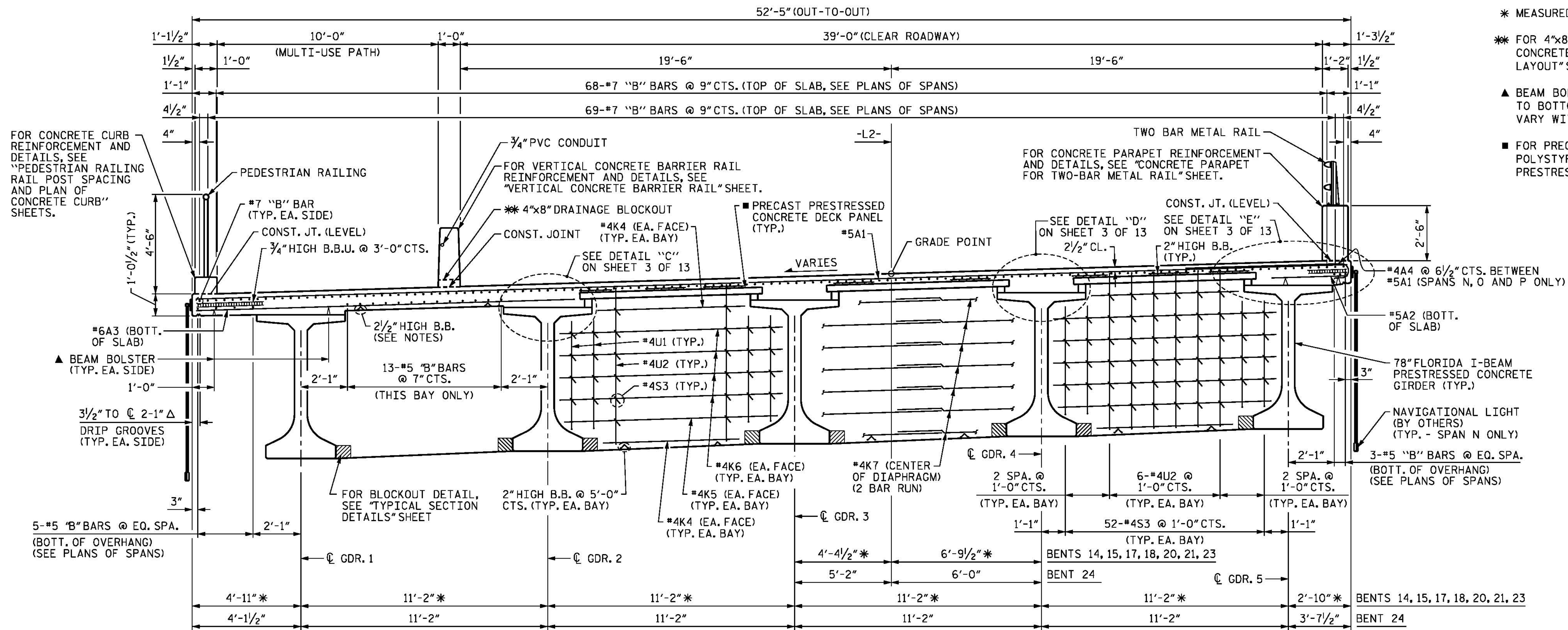


NOTES

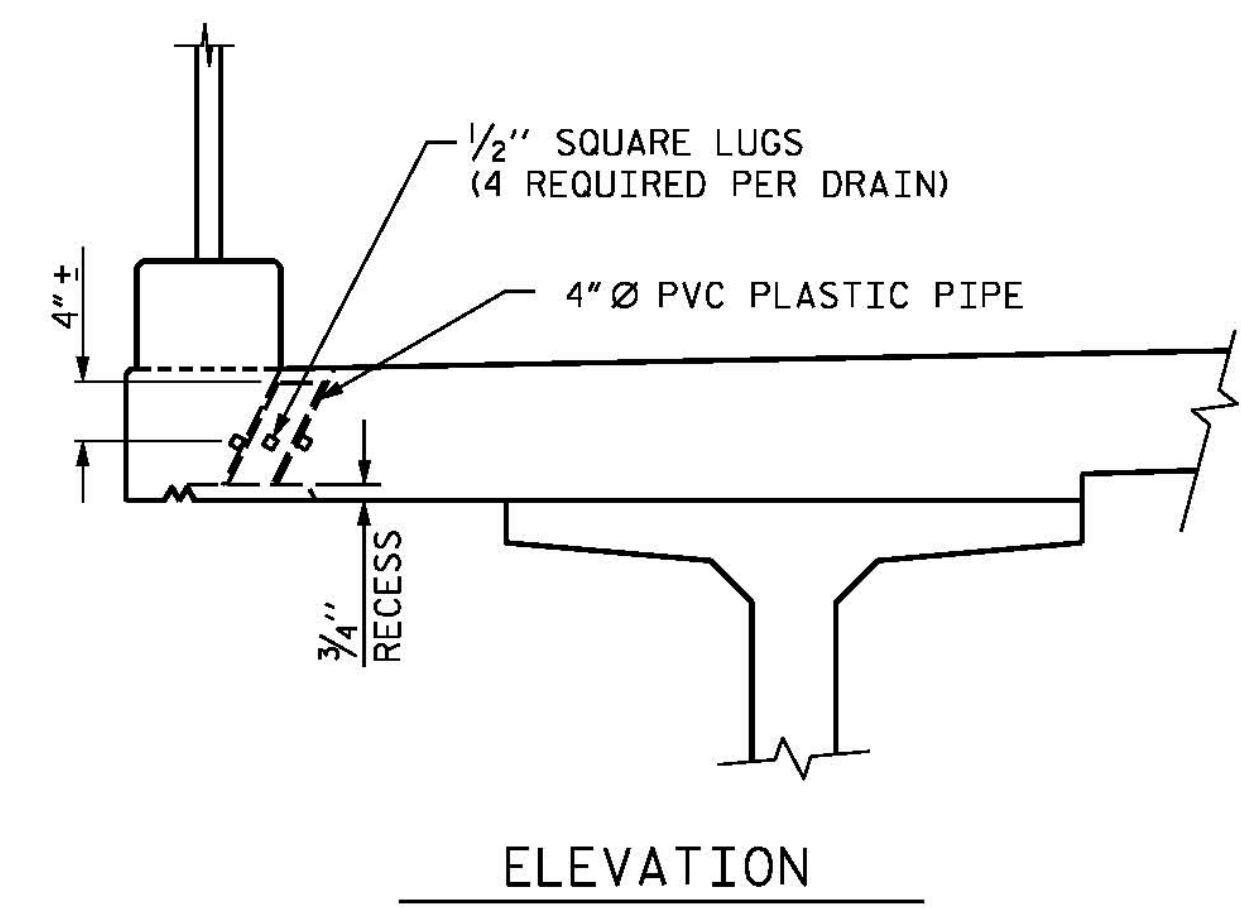
FOR NOTES, SEE SHEET 1 OF 13.

- * MEASURED RADIAL THROUGH WORK POINT.
- ** FOR 4"x8" DRAINAGE BLOCKOUT SPACING, SEE "VERTICAL CONCRETE BARRIER RAIL, PARAPET AND RAIL POST LAYOUT" SHEET.
- ▲ BEAM BOLSTER REQUIRED TO MAINTAIN 2 1/2" CL. TO BOTTOM OF SLAB (BEAM BOLSTER HEIGHT WILL VARY WITH BUILD-UPS) (TYP. EA. OVERHANG)
- FOR PRECAST PRESTRESSED CONCRETE DECK PANEL AND POLYSTYRENE DETAILS AND NOTES, SEE "PRECAST PRESTRESSED CONCRETE DECK PANELS" SHEET.

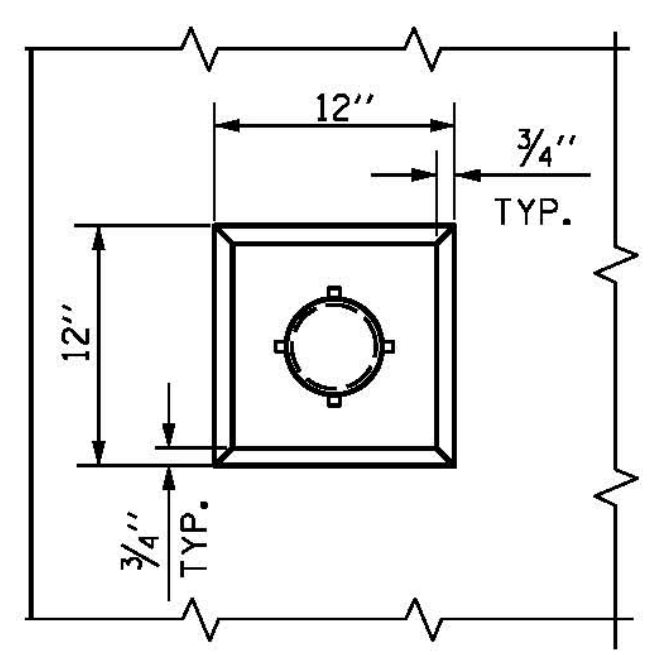


HALF SECTION AT CONTINUOUS BENT DIAPHRAGMS

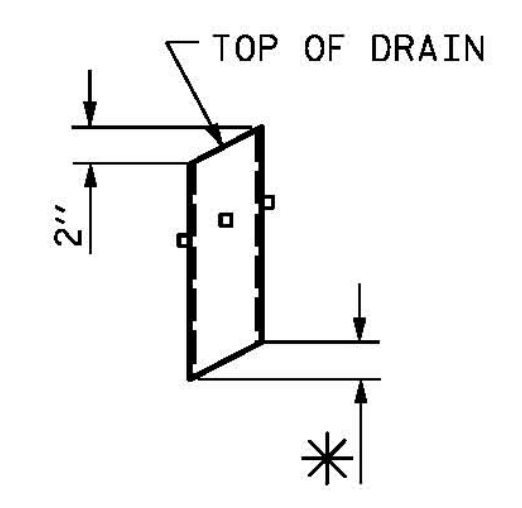
TYPICAL SECTION



ELEVATION



PLAN OF RECESS

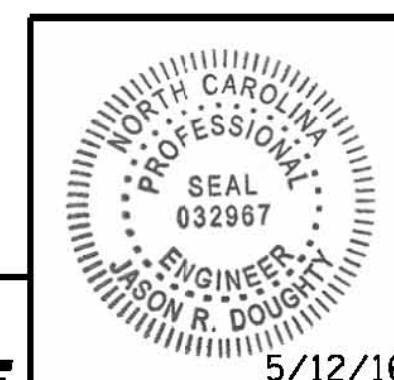


PIPE DETAIL

DRAIN DETAILS

TOP OF FLOOR DRAINS TO BE SET 3/8" BELOW SURFACE OF SLAB.
4 - 1/2" SQUARE LUGS TO BE GLUED TO THE P.V.C. PLASTIC PIPE AT EQUAL SPACES AROUND THE PIPE DRAIN APPROXIMATELY 4" FROM THE TOP OF THE PIPE.
THE 4" Ø PVC PLASTIC PIPE AND FITTINGS SHALL BE SCHEDULE 40 AND CONFORM TO ASTM D1785.

PROJECT NO. B-4929
PENDER COUNTY
STATION: 38+13.81 -L2-
SHEET 4 OF 13



DocuSigned by:
Jason R. Doughty
5/12/16

STATE OF NORTH CAROLINA
DEPARTMENT OF TRANSPORTATION
RALEIGH
SUPERSTRUCTURE
TYPICAL SECTION
SPANS N THROUGH Y

REVISIONS						SHEET NO.
NO.	BY:	DATE:	NO.	BY:	DATE:	TOTAL SHEETS
1			3			278
2			4			

PARSONS BRINCKERHOFF
434 FAYETTEVILLE STREET
SUITE 1500
RALEIGH, NC 27601
LICENSE NO. F-0165

DOCUMENT NOT CONSIDERED FINAL
UNLESS ALL SIGNATURES COMPLETED

5/9/2016 400_067_B4929_SMU_TYP04.dgn

DESIGNED BY:	J. SMITH	DATE:	JAN 2016
DRAWN BY:	K. WHITE	DATE:	JAN 2016
CHECKED BY:	B. LOFLIN	DATE:	MAR 2016
DESIGN ENGINEER OF RECORD:	J. DOUGHTY	DATE:	MAY 2016