

NOTES

- FOR NOTES, SEE SHEET 1 OF 13.
- FOR DECK DRAIN DETAILS, SEE SHEET 4 OF 13.
- * MEASURED RADIAL THROUGH WORK POINT.
- ** FOR 4"x8" DRAINAGE BLOCKOUT SPACING, SEE "VERTICAL CONCRETE BARRIER RAIL, PARAPET AND RAIL POST LAYOUT" SHEET.
- ▲ BEAM BOLSTER REQUIRED TO MAINTAIN 2 1/2" CL. TO BOTTOM OF SLAB (BEAM BOLSTER HEIGHT WILL VARY WITH BUILD-UPS) (TYP. EA. OVERHANG)
- FOR PRECAST PRESTRESSED CONCRETE DECK PANEL AND POLYSTYRENE DETAILS AND NOTES, SEE "PRECAST PRESTRESSED CONCRETE DECK PANELS" SHEET.

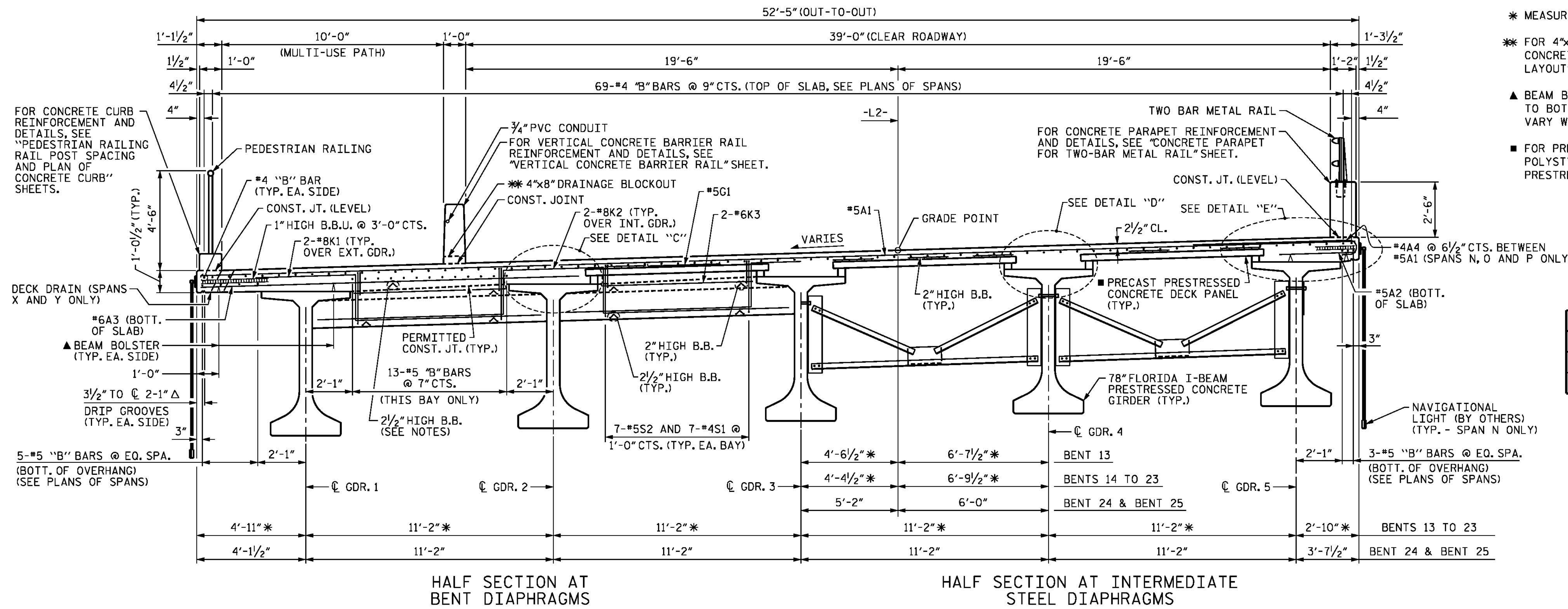
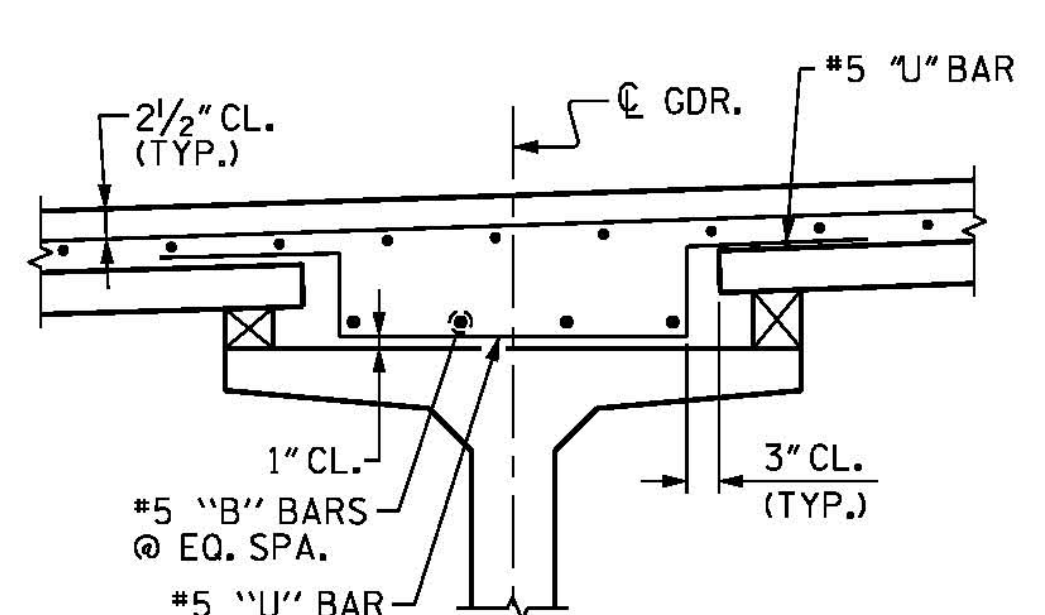
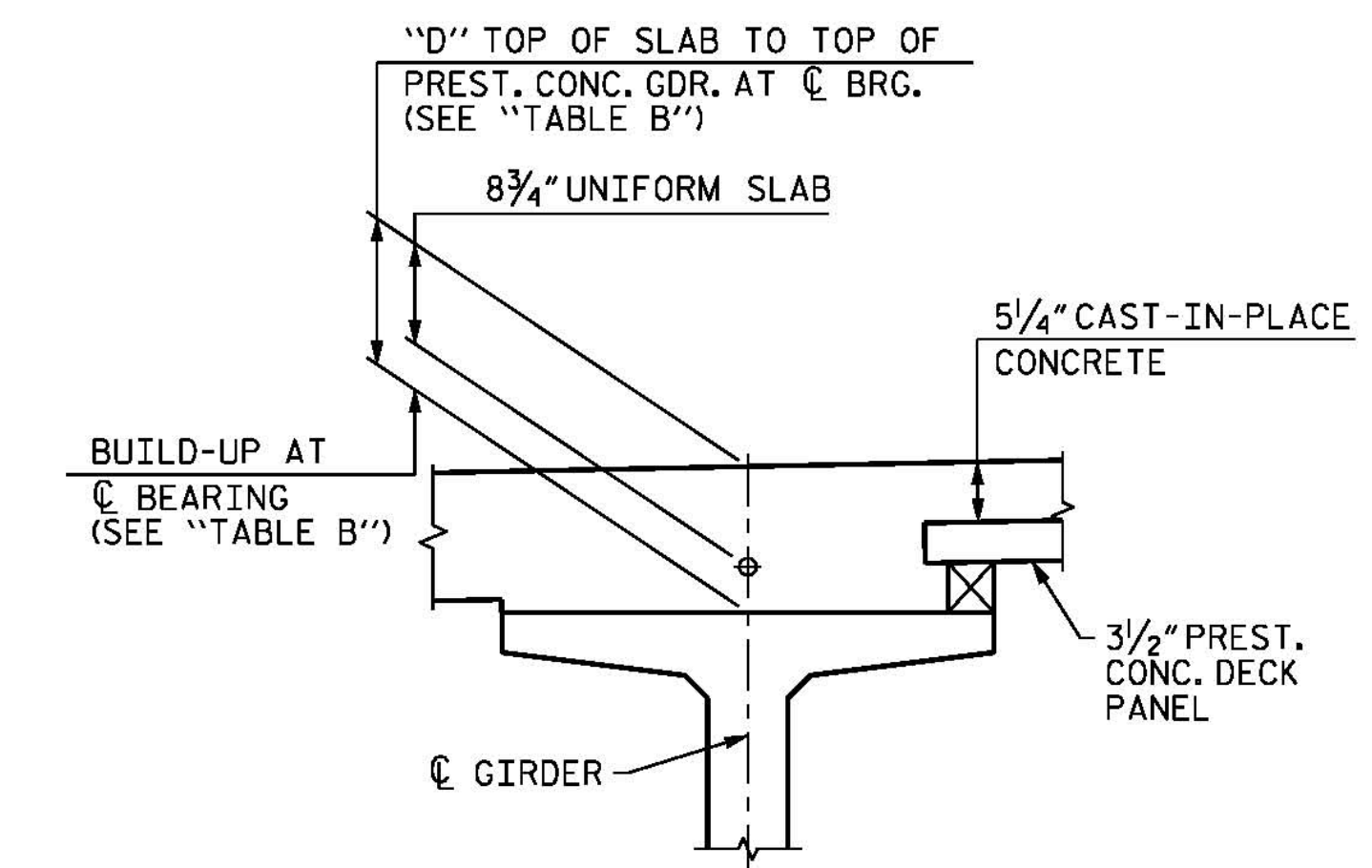


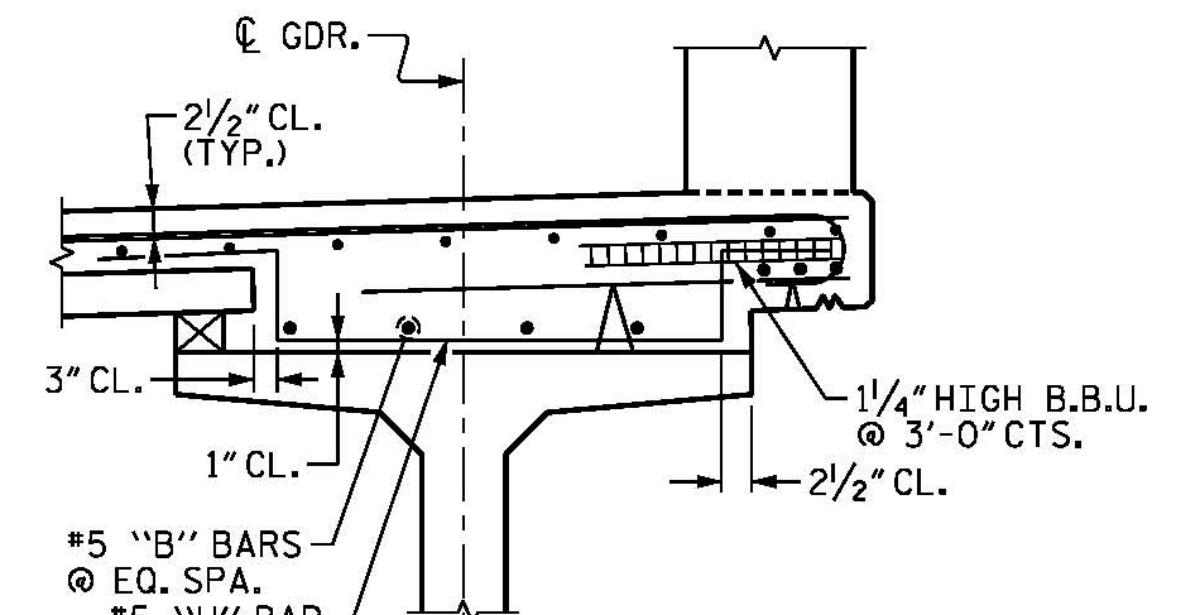
TABLE B

SPAN	BUILD-UP	D
N-P	2 1/2"	1 1/4"
Q-Y	4 1/2"	1'-1 1/4"

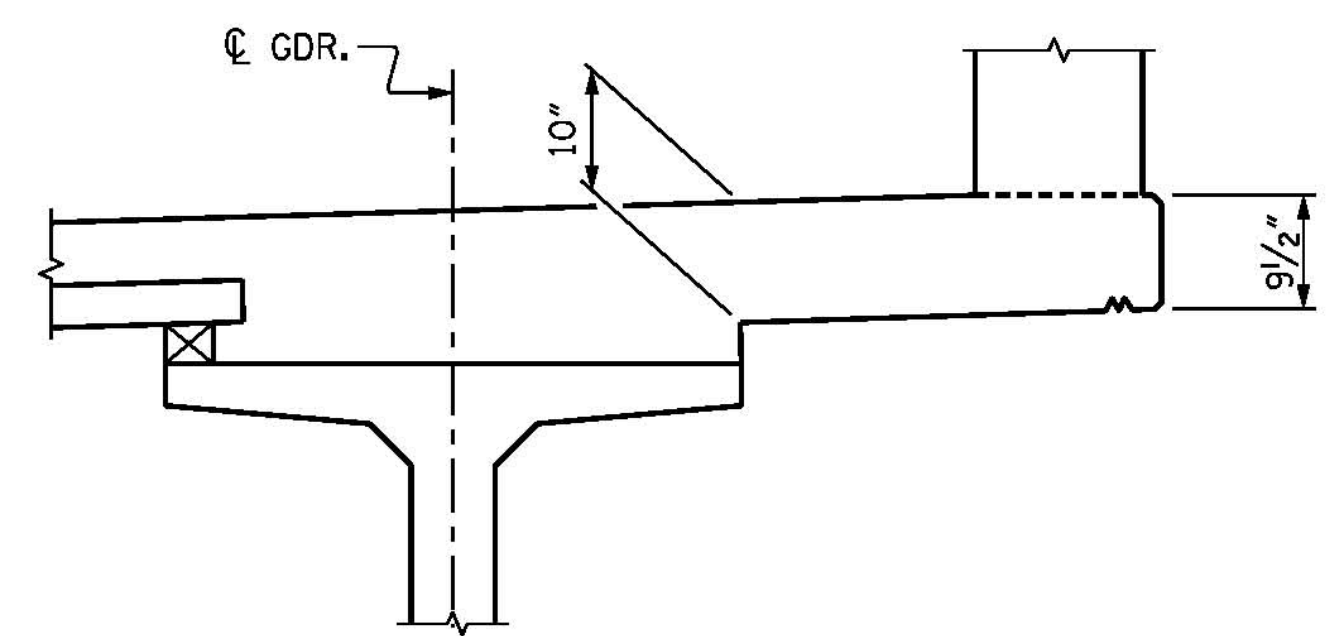
TYPICAL SECTION
FOR INTERMEDIATE STEEL DIAPHRAGM DETAILS, SEE "INTERMEDIATE STEEL DIAPHRAGMS FOR FLORIDA I-BEAM PRESTRESSED CONCRETE GIRDERS" SHEET



BUILD-UP REINFORCEMENT GIRDERS 1 TO 4 ONLY IN SPANS O AND P.
FOR LOCATION OF #5 "U" BARS, SEE PLAN OF SPAN SHEETS.
"U" BARS MAY BE SHIFTED AS REQUIRED TO CLEAR STIRRUPS AND DECK REINFORCEMENT.

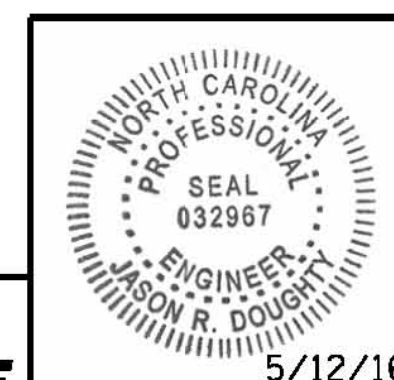


BUILD-UP REINFORCEMENT FOR GIRDERS IN SPANS N, O AND P ONLY
"U" BARS MAY BE SHIFTED AS REQUIRED TO CLEAR STIRRUPS AND DECK REINFORCEMENT.



SPANS N, O AND P ONLY SHOWN AT MIDSPAN
REBAR NOT SHOWN FOR CLARITY

PROJECT NO. B-4929
PENDER COUNTY
STATION: 38+13.81 -L2-
SHEET 3 OF 13



PARSONS BRINCKERHOFF
434 FAYETTEVILLE STREET
SUITE 1500
RALEIGH, NC 27601
LICENSE NO. F-0165

DocuSigned by:
Jason R. Doughty
00F1C8648274F7...

STATE OF NORTH CAROLINA
DEPARTMENT OF TRANSPORTATION
RALEIGH
SUPERSTRUCTURE
TYPICAL SECTION
SPANS N THROUGH Y

REVISIONS

NO.	BY:	DATE:	NO.	BY:	DATE:
1			3		
2			4		

SHEET NO. **S-34**
TOTAL SHEETS **278**

DESIGNED BY: J. SMITH DATE: JAN 2016
DRAWN BY: K. WHITE DATE: JAN 2016
CHECKED BY: B. LOFLIN DATE: MAR 2016
DESIGN ENGINEER OF RECORD: J. DOUGHTY DATE: MAY 2016

5/10/2016
400_065_B4929_SMU_TYPO3.dgn

**DOCUMENT NOT CONSIDERED FINAL
UNLESS ALL SIGNATURES COMPLETED**