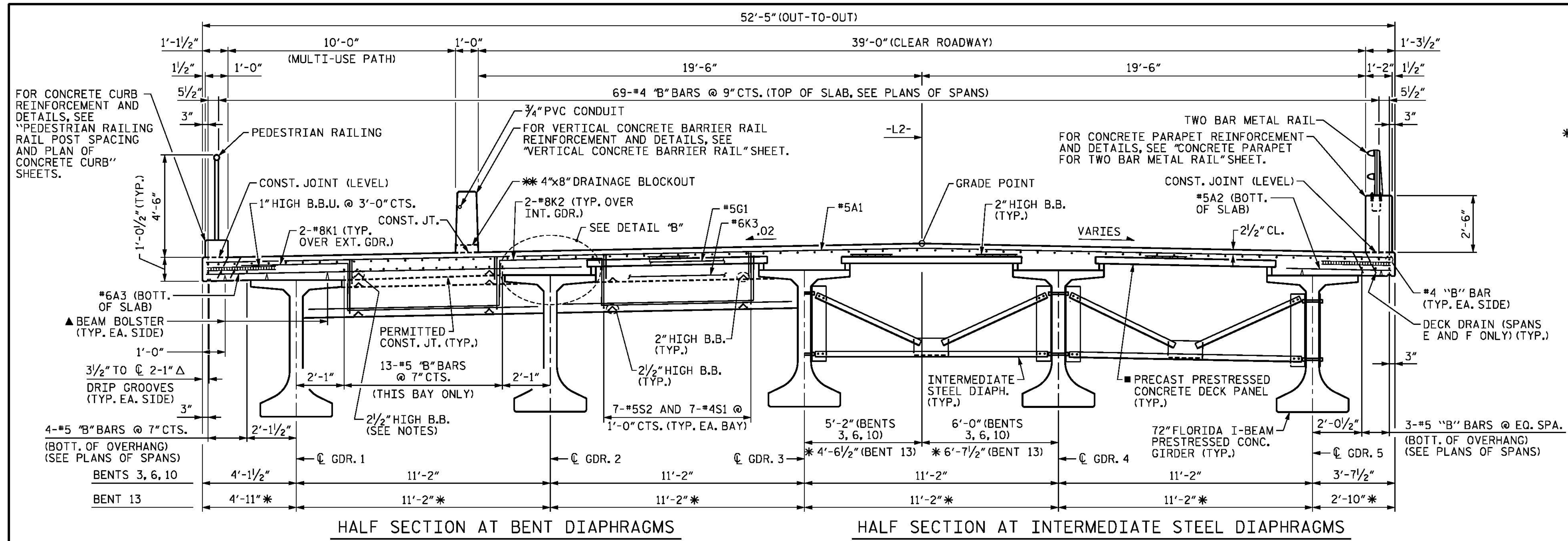


**NOTES**

- FOR NOTES, SEE SHEET 1 OF 13.
- FOR DECK DRAIN DETAILS, SEE SHEET 4 OF 13.
- \* MEASURED RADIAL THROUGH WORK POINT.
- \*\* FOR 4"x8" DRAINAGE BLOCKOUT SPACING, SEE "VERTICAL CONCRETE BARRIER RAIL, PARAPET AND RAIL POST LAYOUT" SHEET.
- ▲ BEAM BOLSTER REQUIRED TO MAINTAIN 2 1/2" CL. TO BOTTOM OF SLAB (BEAM BOLSTER HEIGHT WILL VARY WITH BUILD-UPS) (TYP. EA. OVERHANG)
- FOR PRECAST PRESTRESSED CONCRETE DECK PANEL AND POLYSTYRENE DETAILS AND NOTES, SEE "PRECAST PRESTRESSED CONCRETE DECK PANELS" SHEET.

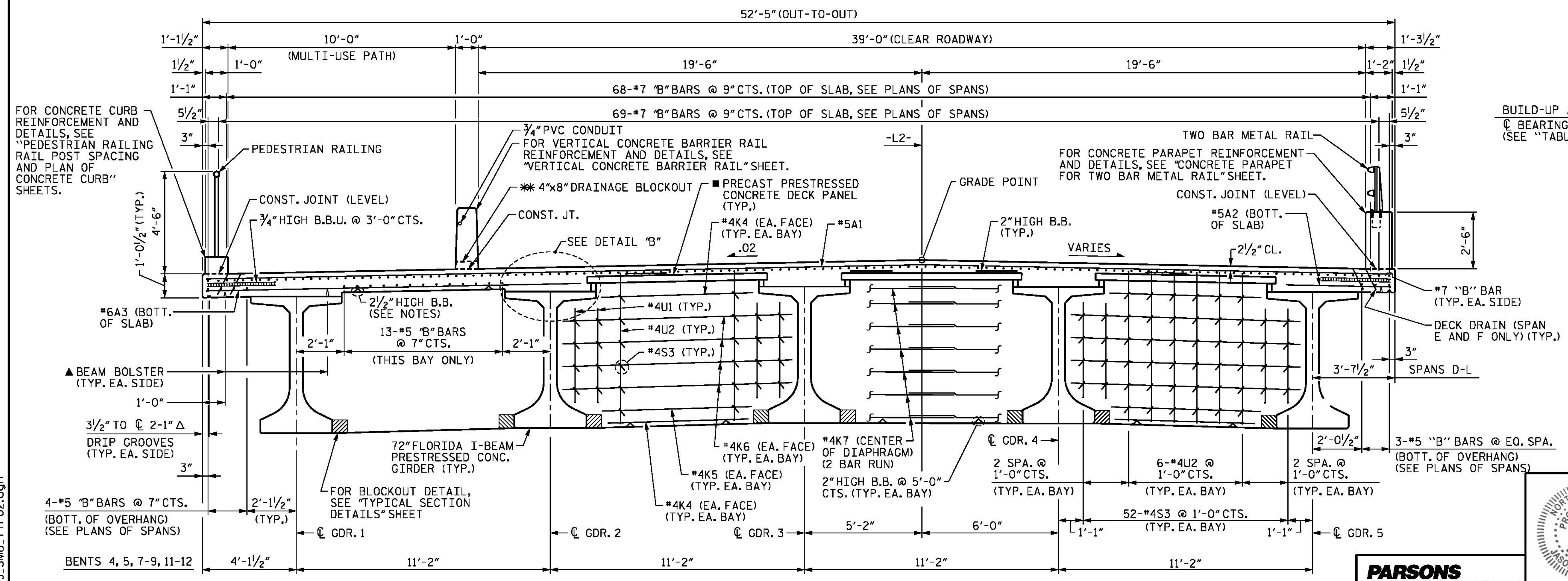
**TABLE A**

SPAN	BUILD-UP	D
D-J	3"	11 3/4"
K-M	3 3/4"	1'-0 1/2"



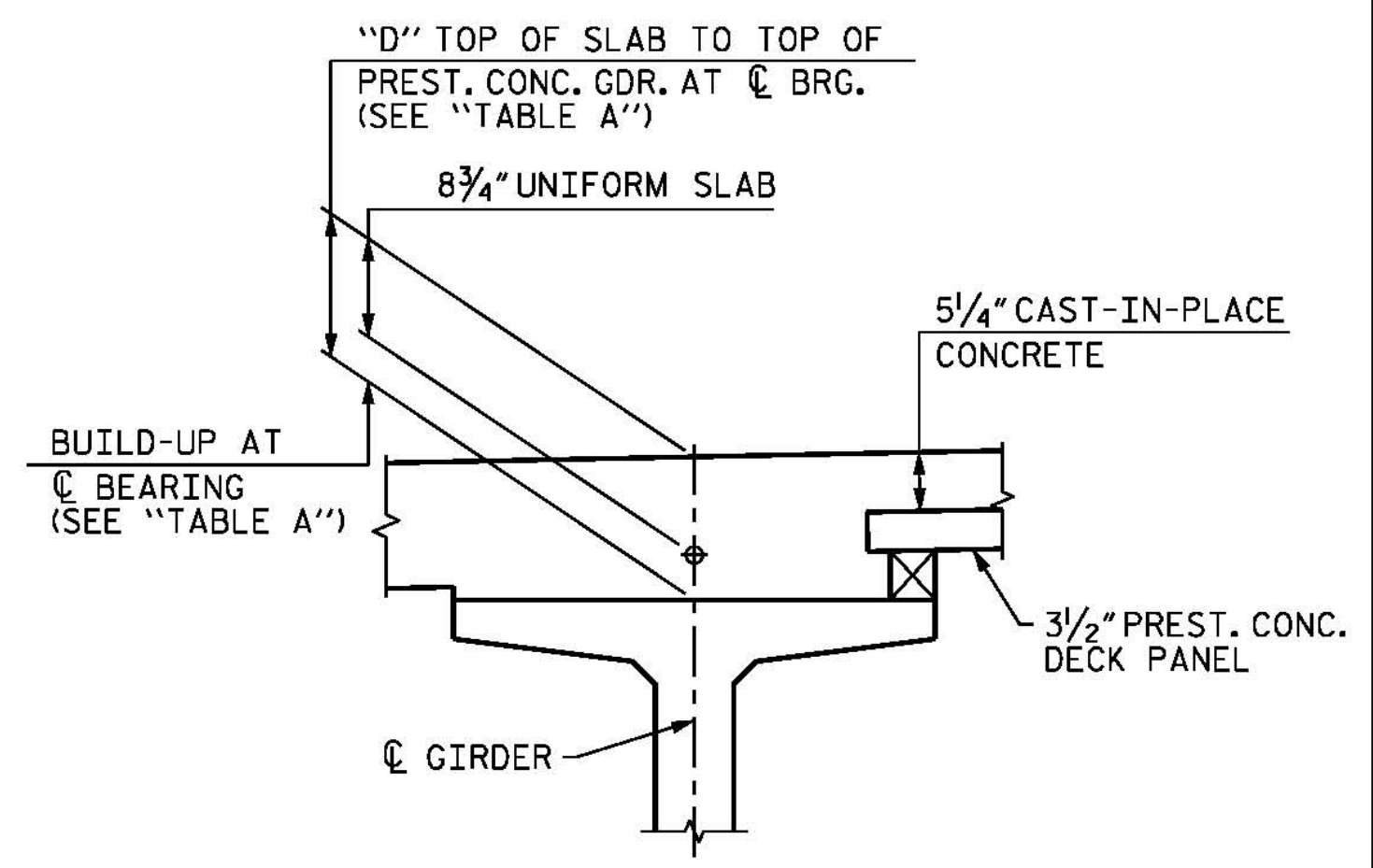
**TYPICAL SECTION**

FOR INTERMEDIATE STEEL DIAPHRAGM DETAILS, SEE "INTERMEDIATE STEEL DIAPHRAGMS FOR FLORIDA I-BEAM PRESTRESSED CONCRETE GIRDERS" SHEET



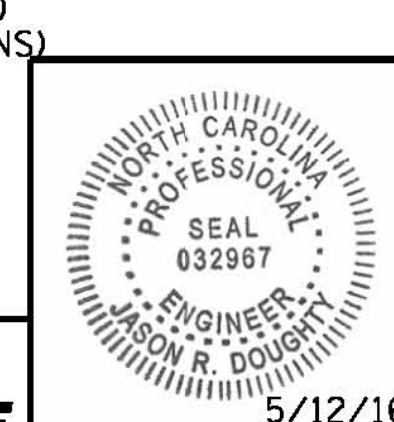
**SECTION AT CONTINUOUS BENT DIAPHRAGMS**

**TYPICAL SECTION**



**DETAIL "B"**

PROJECT NO. **B-4929**  
**PENDER** COUNTY  
 STATION: **38+13.81 -L2-**  
 SHEET 2 OF 13



**PARSONS BRINCKERHOFF**  
 434 FAYETTEVILLE STREET  
 SUITE 1500  
 RALEIGH, NC 27601  
 LICENSE NO. F-0165

DocuSigned by:  
**Jason R. Doughty**  
 5/12/16

STATE OF NORTH CAROLINA  
 DEPARTMENT OF TRANSPORTATION  
 RALEIGH  
 SUPERSTRUCTURE  
**TYPICAL SECTION SPANS D THROUGH M**

REVISIONS

NO.	BY:	DATE:	NO.	BY:	DATE:
1			3		
2			4		

SHEET NO. **S-33**  
 TOTAL SHEETS **278**

DESIGNED BY: **J. SMITH** DATE: **NOV 2015**  
 DRAWN BY: **KEW / MAH** DATE: **NOV 2015**  
 CHECKED BY: **E. DAVIS** DATE: **MAR 2016**  
 DESIGN ENGINEER OF RECORD: **J. DOUGHTY** DATE: **MAY 2016**

**DOCUMENT NOT CONSIDERED FINAL UNLESS ALL SIGNATURES COMPLETED**

5/10/2016 400\_063\_B4929\_SMU\_TYPO2.dgn