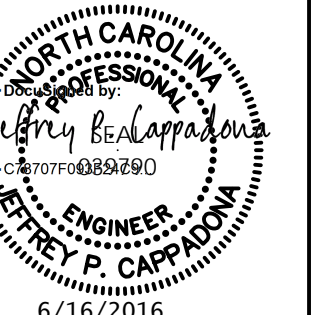
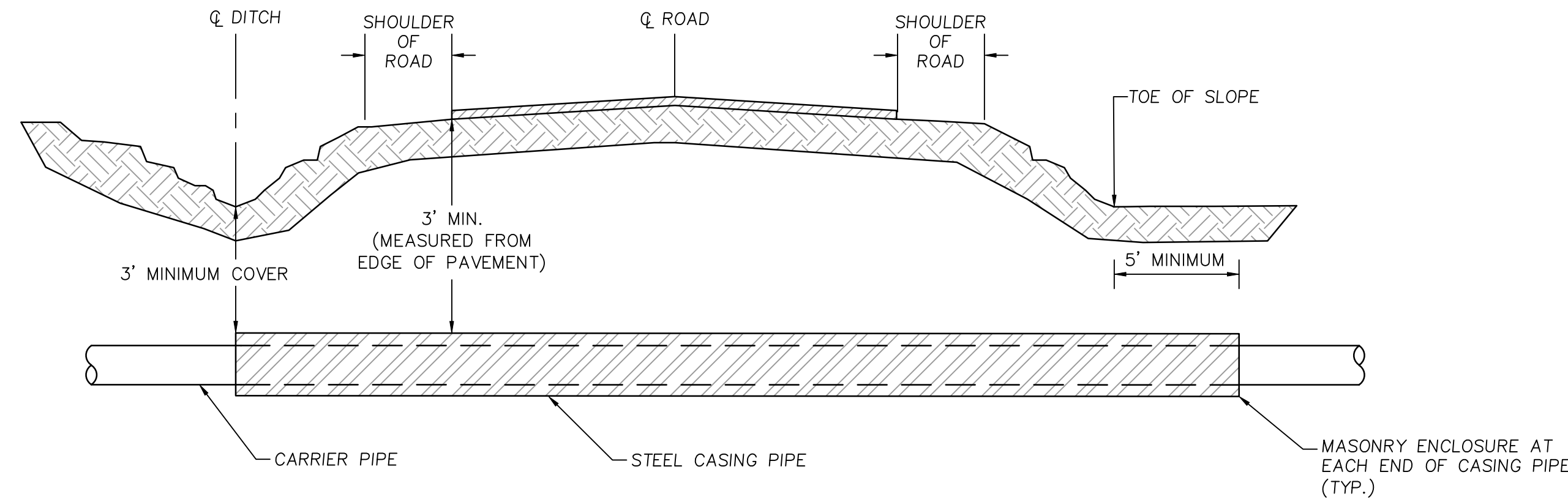


DESIGNED BY: JPC
 DRAWN BY: JPC
 CHECKED BY: WGS
 APPROVED BY: JPC
 REVISED:
 NORTH CAROLINA DEPARTMENT OF TRANSPORTATION
 UTILITIES ENGINEERING SEC. PHONE: (919) 707-6690 FAX: (919) 250-4151
 6/16/2016
 UTILITY CONSTRUCTION PLANS ONLY



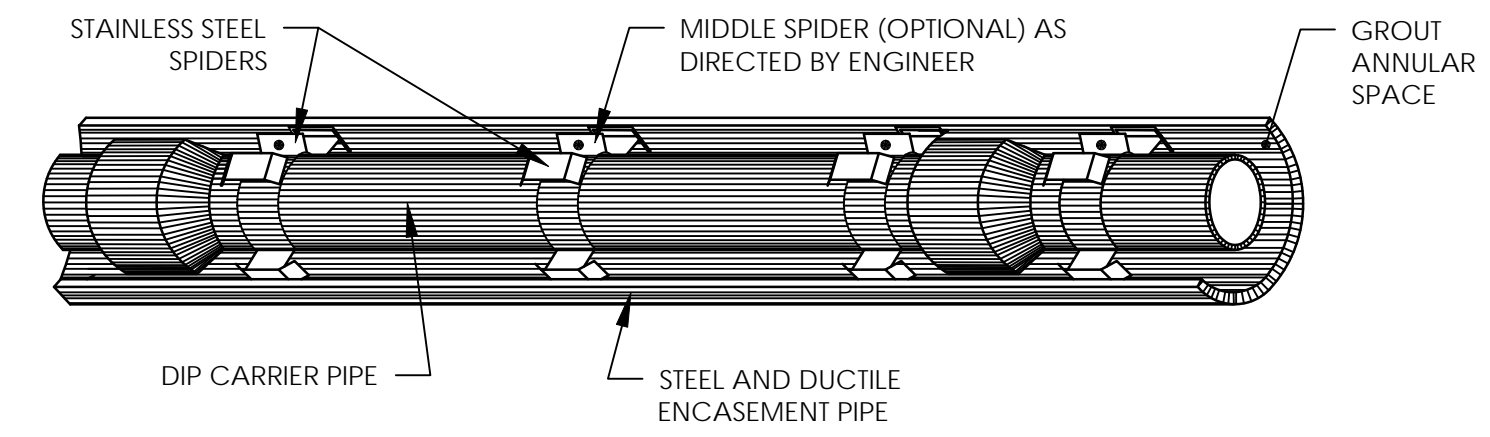
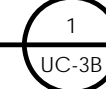
UTILITY CONSTRUCTION



NOTE: ALL ENCASEMENTS SHALL EXTEND FROM DITCH LINE TO DITCH LINE IN CUT SECTIONS, 5' BEYOND THE TOE OF SLOPES IN FILL SECTIONS, AND 10' BEYOND THE EDGE OF PAVEMENT IN SECTIONS WITH NO DITCH OR FILL AREA (PER NCDOT)

JACK AND BORE UNDER STATE ROAD (NCDOT) DETAIL

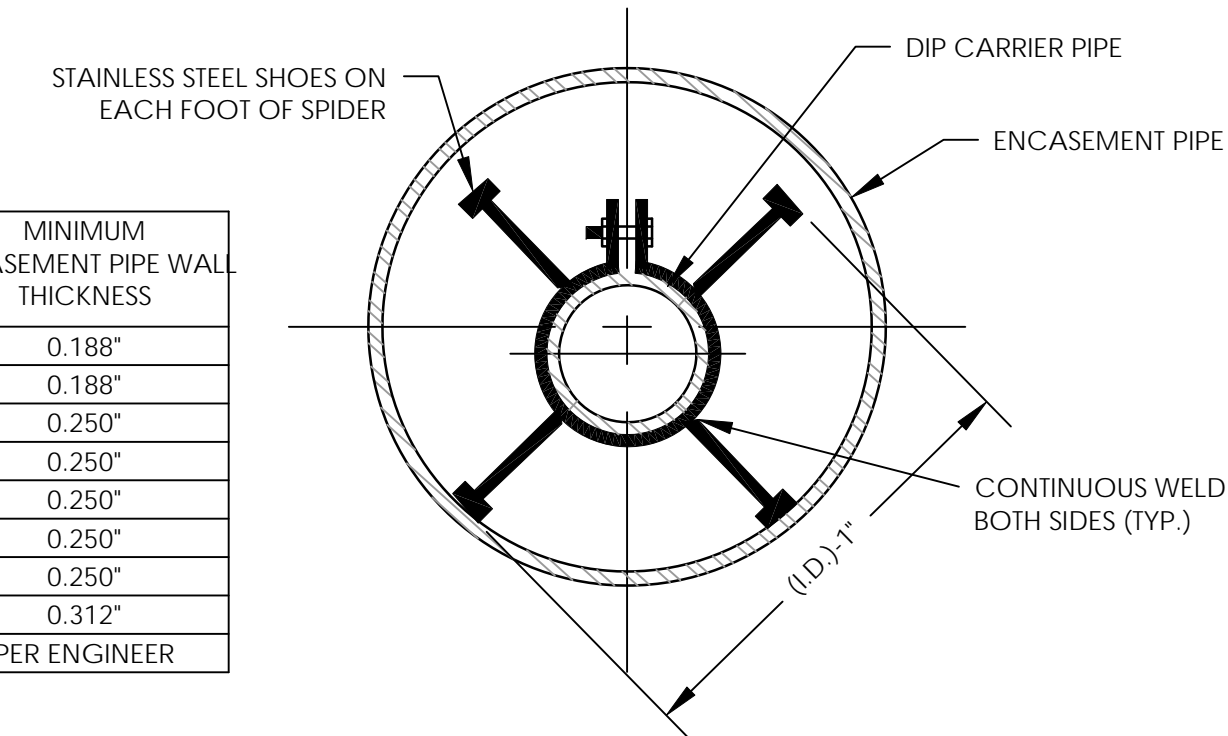
SCALE: NOT TO SCALE



NOTES:

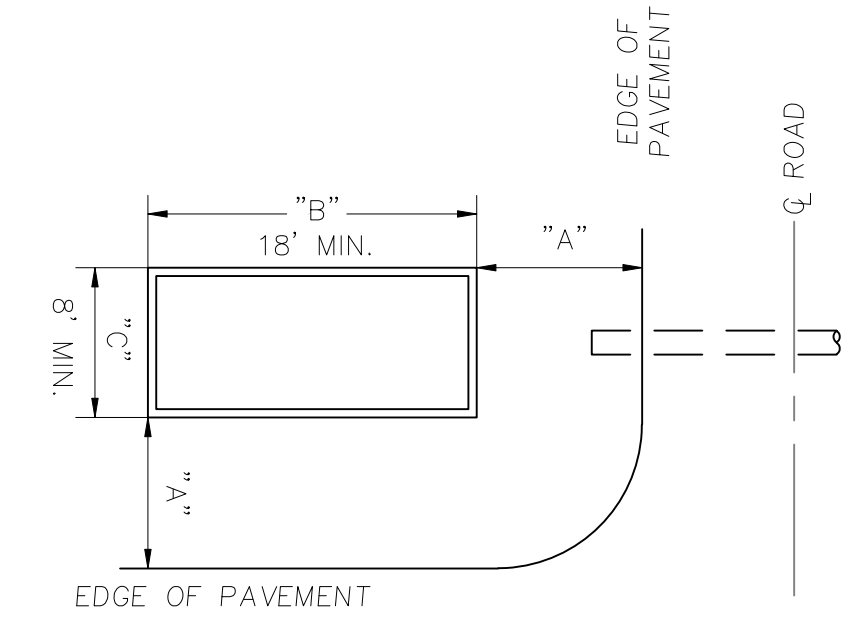
1. NORMAL SPACING FOR SPIDERS IS 3 PER 18 FOOT LENGTH OF PIPE, ONE SUPPORT AT EACH END AND A SUPPORT AT 9 FOOT CENTER
2. ENTIRE SPIDER ASSEMBLY TO BE 306 STAINLESS STEEL
3. FIELD MODIFY AS REQUIRED TO PROVIDE DESIGN SLOPE IN CARRIER PIPE.

CARRIER PIPE DIAMETER	MINIMUM ENCASEMENT PIPE DIAMETER	MINIMUM ENCASEMENT PIPE WALL THICKNESS
4"	12"	0.188"
6"	12"	0.188"
8"	12"	0.250"
12"	16"	0.250"
16"	24"	0.250"
18"	24"	0.250"
24"	30"	0.250"
30"	36"	0.312"
≥36"	PER ENGINEER	PER ENGINEER

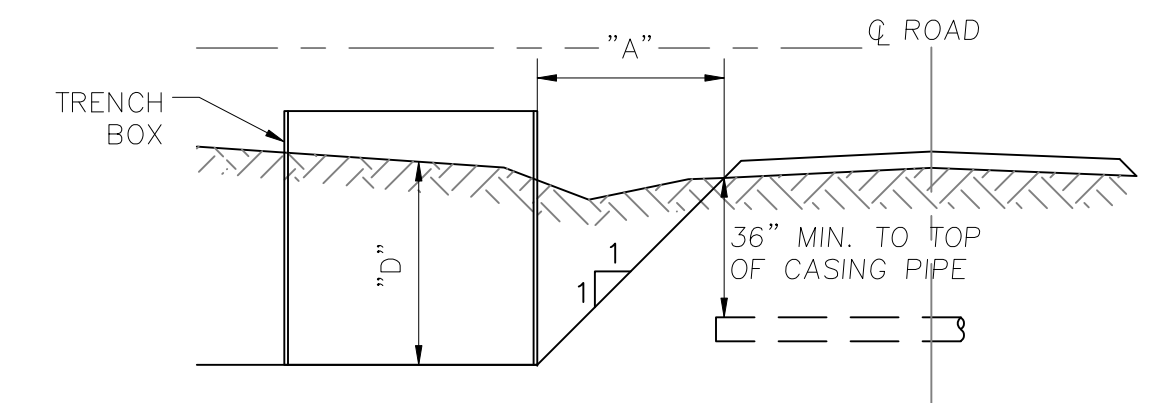


JACK AND BORE DETAIL

SCALE: NOT TO SCALE



BORE PIT PLAN VIEW



BORE PIT SECTION VIEW

LAYOUT SCHEDULE (FT.)

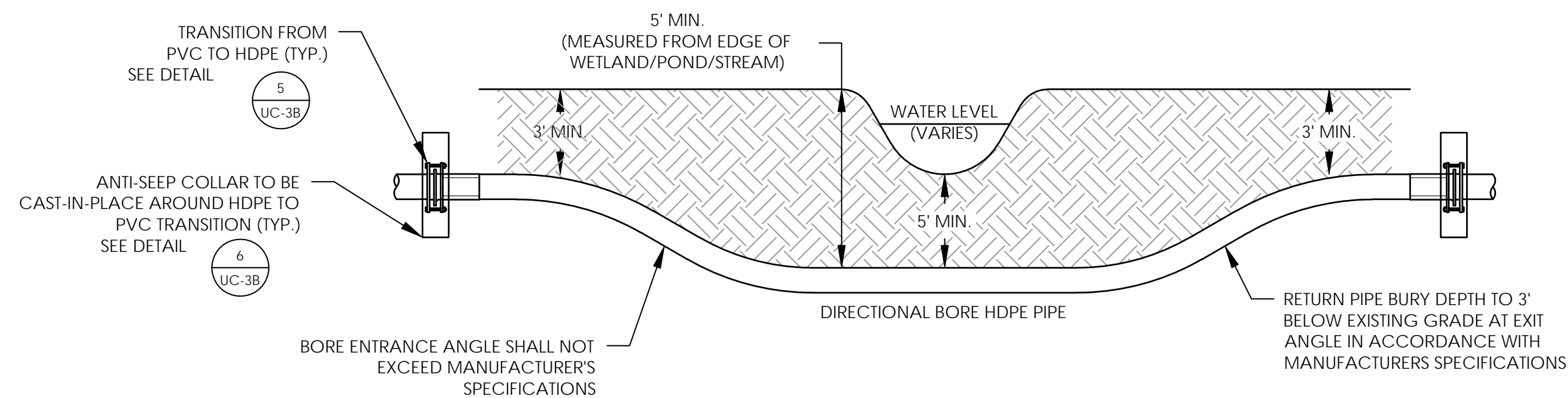
"A"	5	6	7	8	9	10	11	12
"D"	5	6	7	8	9	10	11	12

NOTES:

1. "A" IS THE MINIMUM DISTANCE FROM THE EDGE OF PAVEMENT ALLOWABLE BY NCDOT, BASED ON THE DEPTH OF THE BORE PIT ("D") AND A RATIO OF 1:1 SLOPE. CONTRACTOR SHALL FOLLOW NCDOT SAFETY REQUIREMENTS BY FENCING OFF OPEN PIT AND WORKING AREA.
2. ACTUAL BORE PIT DIMENSIONS ARE SHOWN PER PLAN.

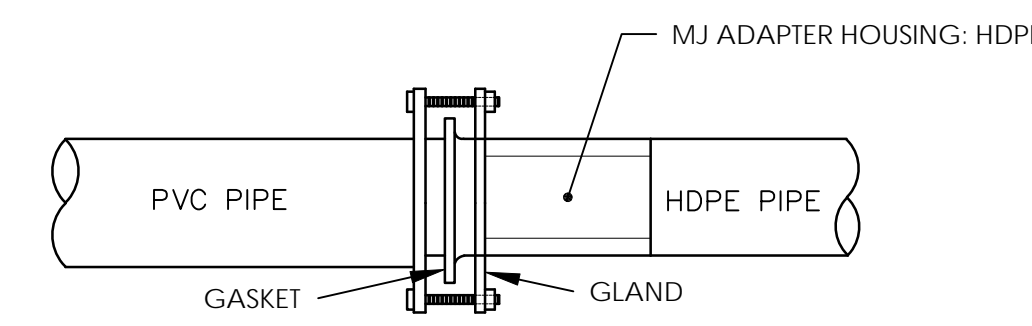
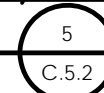
BORE PIT DETAIL (TYPICAL) DETAIL

SCALE: NOT TO SCALE



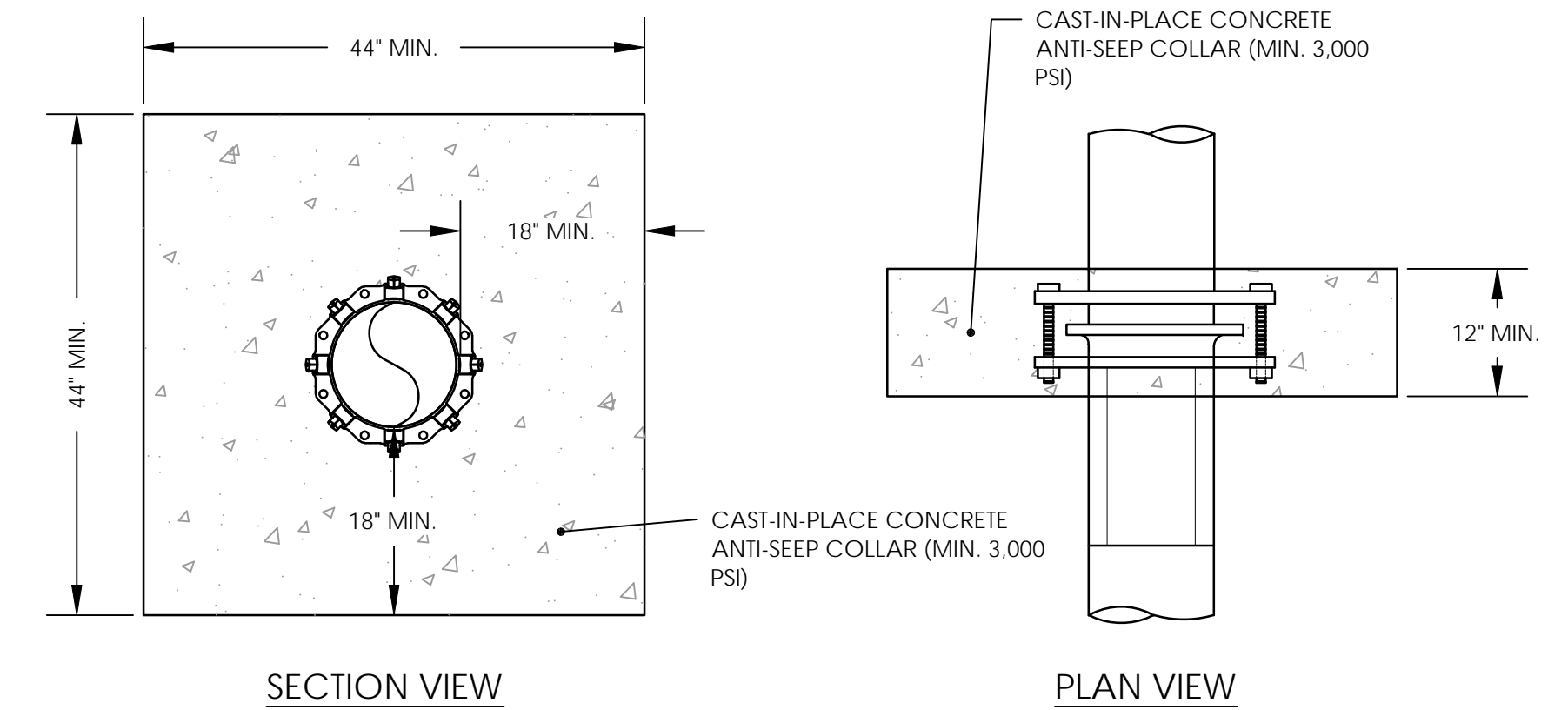
DIRECTIONAL BORE WETLAND/POND/STREAM CROSSING (HDPE) DETAIL

SCALE: NOT TO SCALE



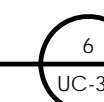
HDPE-PVC TRANSITION MECHANICAL JOINT ADAPTER DETAIL

SCALE: NOT TO SCALE



ANTI-SEEP COLLAR (TYP.) DETAIL

SCALE: NOT TO SCALE



REVISIONS