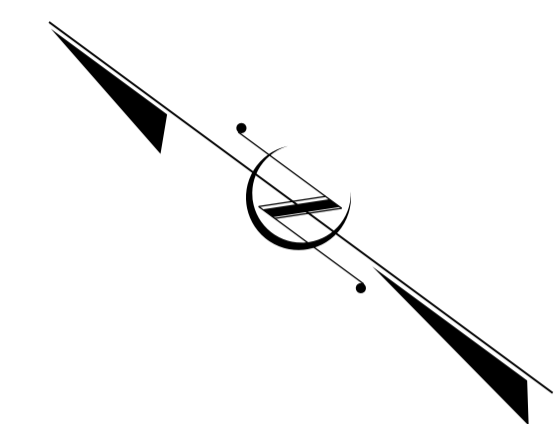


DOCUMENT NOT CONSIDERED FINAL
UNLESS ALL SIGNATURES COMPLETED

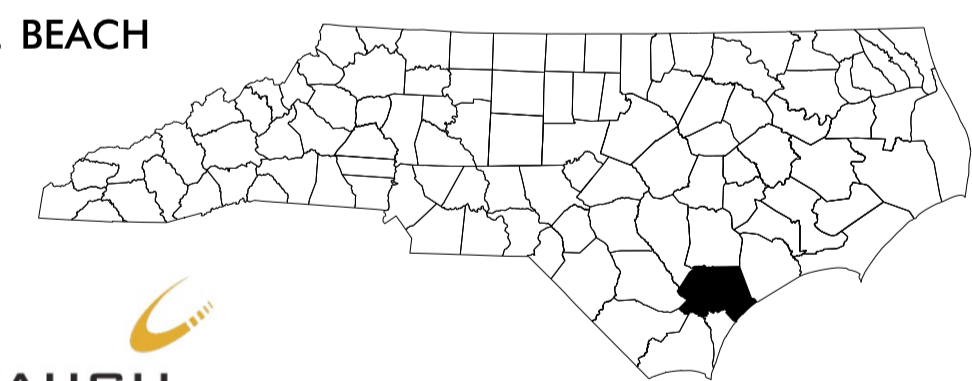
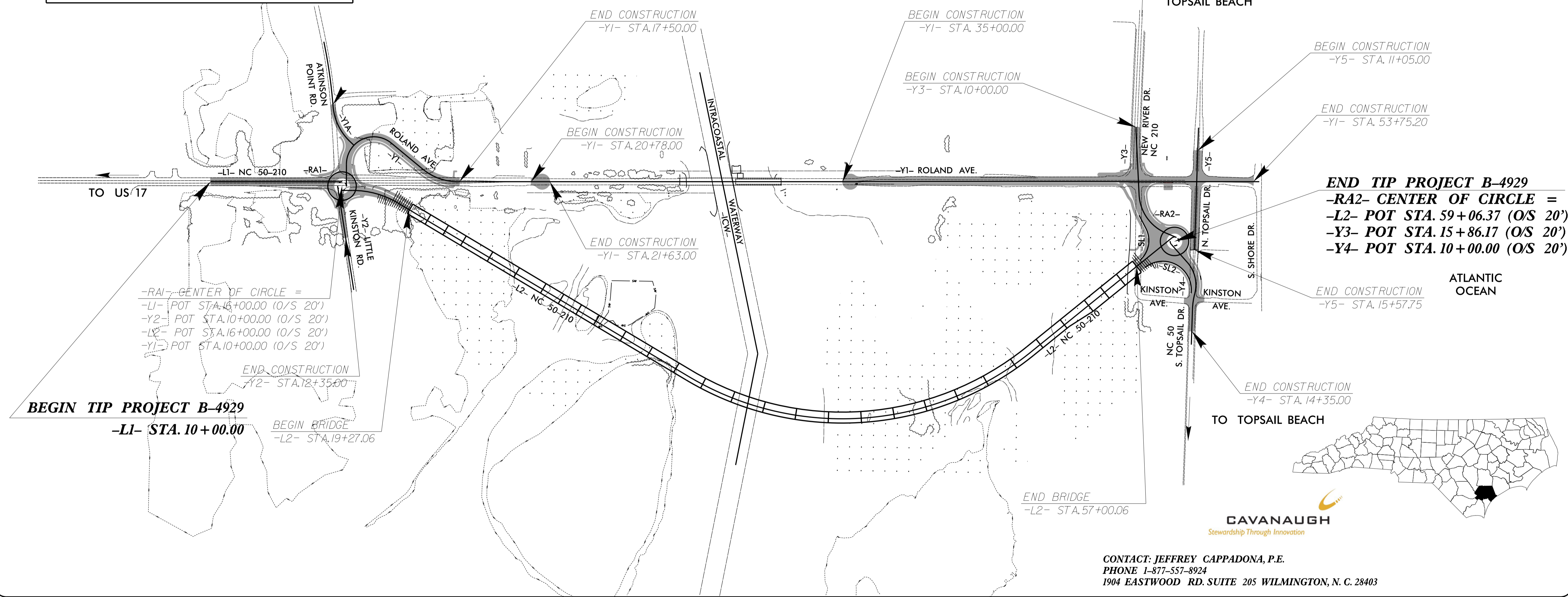
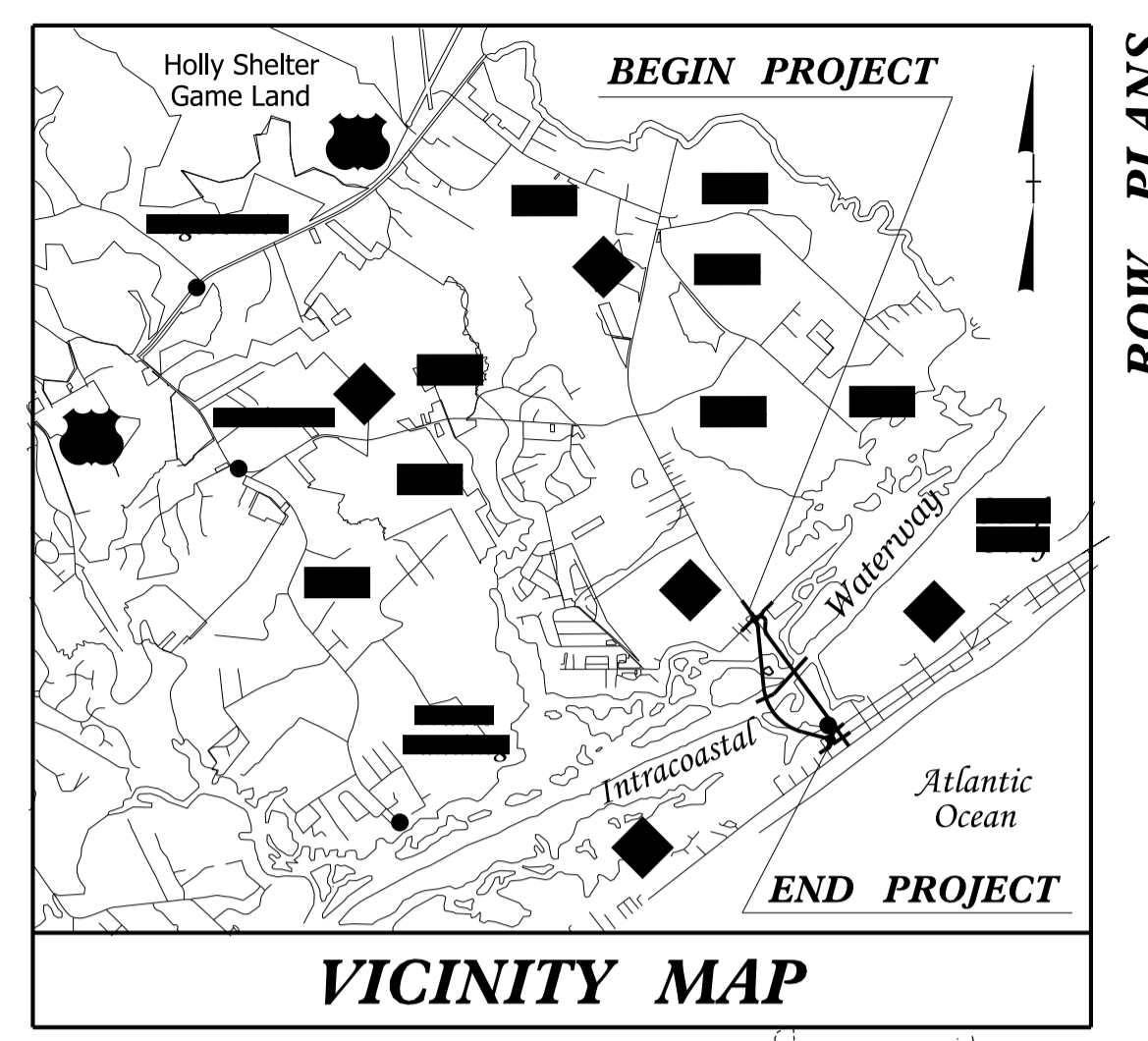


STATE OF NORTH CAROLINA
DIVISION OF HIGHWAYS

UTILITY CONSTRUCTION PLANS PENDER COUNTY

LOCATION: BRIDGE 16 OVER THE INTERCOSTAL WATERWAY
TYPE OF WORK: RELOCATION OF WATER, SANITARY GRAVITY
SEWER AND FORCE MAIN

TIP PROJECT: B-4929



CAVANAUGH
Stewardship Through Innovation

CONTACT: JEFFREY CAPPADONA, P.E.
PHONE 1-877-557-8924
1904 EASTWOOD RD. SUITE 205 WILMINGTON, N. C. 28403

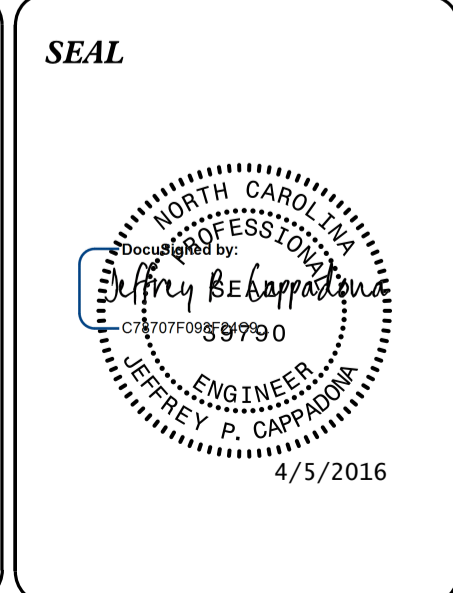
CORPORATE P.E. LICENSE #C-1273

GRAPHIC SCALES

SEE PLAN SHEETS
FOR SCALE

SHEET NO.	DESCRIPTION
UC-1	TITLE SHEET
UC-2	UTILITY SYMBOLOGY
UC-3	NOTES
UC-3A THRU UC-3C	DETAILS
UC-4	SHEET INDEX
UC-5 THUR UC-26	UTILITY CONSTRUCTION AND PROFILE SHEETS

- WATER AND SEWER OWNERS ON PROJECT**
- (1) WATER (TOWN OF SURF CITY)
 - (2) SANITARY SEWER (TOWN OF SURF CITY)
 - (3) FORCE MAIN SEWER (TOWN OF SURF CITY)



PREPARED IN THE OFFICE OF:
**DIVISION OF HIGHWAYS
UTILITIES UNIT
UTILITIES ENGINEERING**

1555 MAIL SERVICES CENTER
RALEIGH NC 27699-1555
PHONE (919) 707-6690
FAX (919) 250-4151

Roger Worthington, P.E. UTILITIES SECTION ENGINEER
Bo Hemphill, P.E. UTILITIES SQUAD LEADER PROJECT ENGINEER
Jeffrey Cappadona, P. E. UTILITIES PROJECT DESIGNER

05-APR-2016 13:52 R:\Utilities\Engineering\UC\Proj\B4929_Ut_1.fsh_UC1.psh.dgn \$\$\$\$USERNAME\$\$\$