

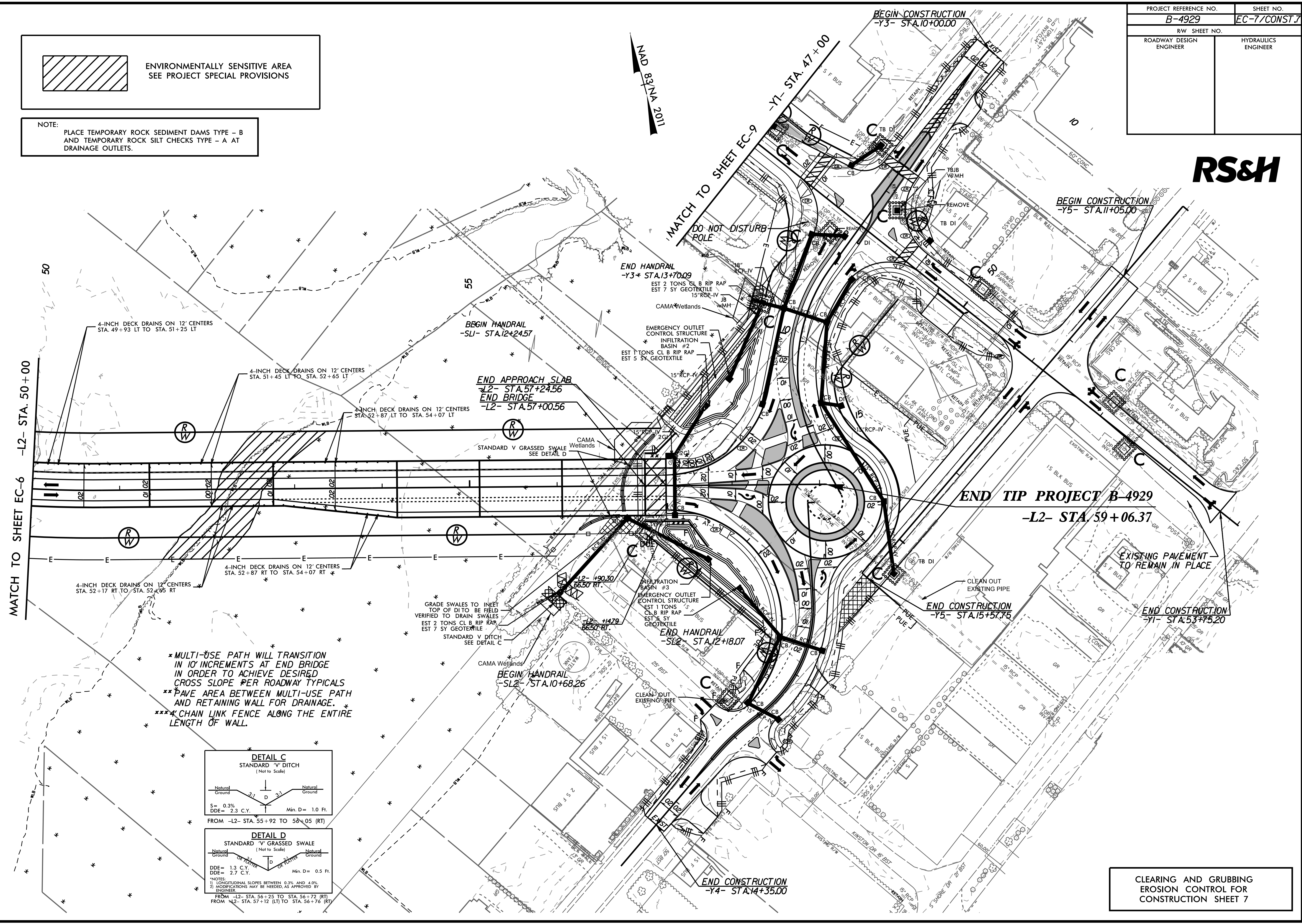
PROJECT REFERENCE NO.	SHEET NO.
B-4929	EC-7/CONST.7
RW SHEET NO.	
ROADWAY DESIGN ENGINEER	HYDRAULICS ENGINEER

**RS&H**

 ENVIRONMENTALLY SENSITIVE AREA  
SEE PROJECT SPECIAL PROVISIONS

NOTE:  
PLACE TEMPORARY ROCK SEDIMENT DAMS TYPE - B  
AND TEMPORARY ROCK SILT CHECKS TYPE - A AT  
DRAINAGE OUTLETS.

NAD 83 ANA 2011



MATCH TO SHEET EC-6 -L2- STA. 50+00

BEGIN CONSTRUCTION -Y3- STA. 10+00.00

BEGIN CONSTRUCTION -Y5- STA. 11+05.00

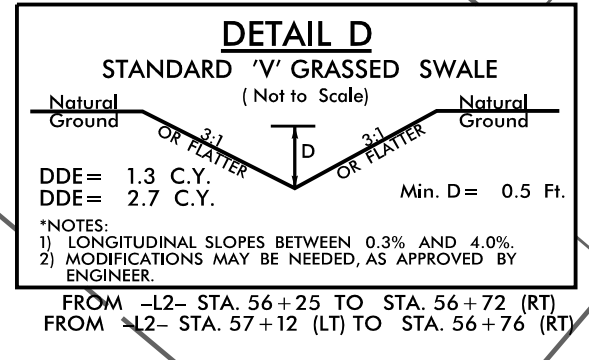
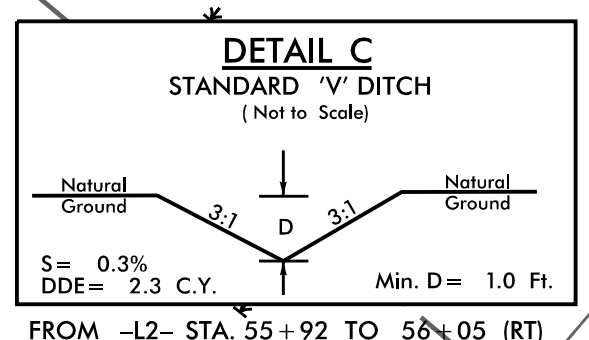
END TIP PROJECT B-4929 -L2- STA. 59+06.37

END CONSTRUCTION -Y5- STA. 15+51.75

END CONSTRUCTION -Y1- STA. 53+75.20

END CONSTRUCTION -Y4- STA. 14+35.00

- \* MULTI-USE PATH WILL TRANSITION IN 10' INCREMENTS AT END BRIDGE IN ORDER TO ACHIEVE DESIRED CROSS SLOPE PER ROADWAY TYPICALS
- \*\* PAVE AREA BETWEEN MULTI-USE PATH AND RETAINING WALL FOR DRAINAGE.
- \*\*\* CHAIN LINK FENCE ALONG THE ENTIRE LENGTH OF WALL.



\*NOTES:  
1) LONGITUDINAL SLOPES BETWEEN 0.3% AND 4.0%  
2) MODIFICATIONS MAY BE NEEDED, AS APPROVED BY ENGINEER

CLEARING AND GRUBBING  
EROSION CONTROL FOR  
CONSTRUCTION SHEET 7

REVISIONS

8/17/99  
4/1/2016 Environmental\Design\Plan Sheets\B4929\_EC.psh.07.dgn  
11:56:20 AM