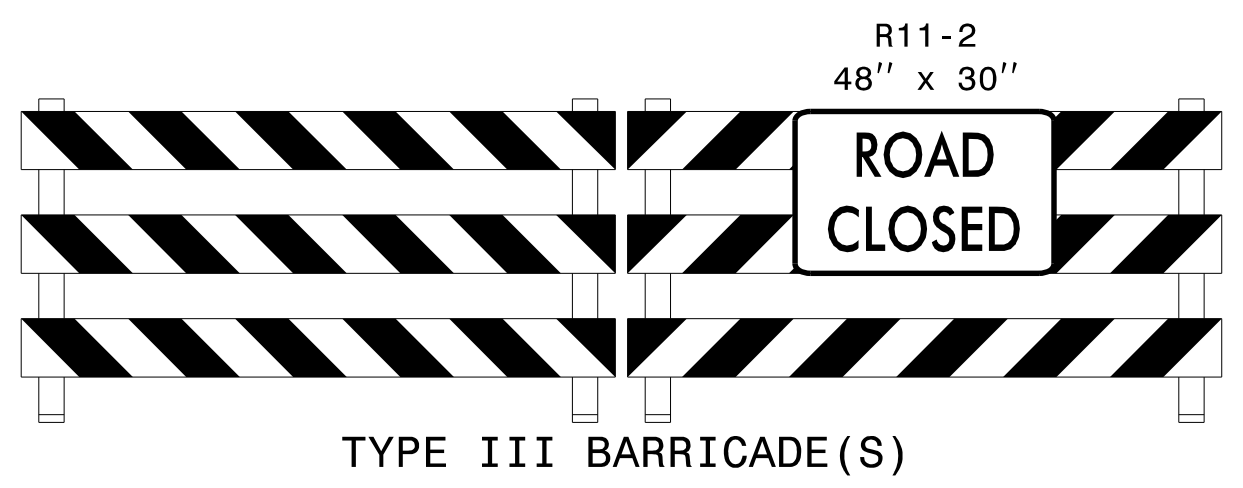
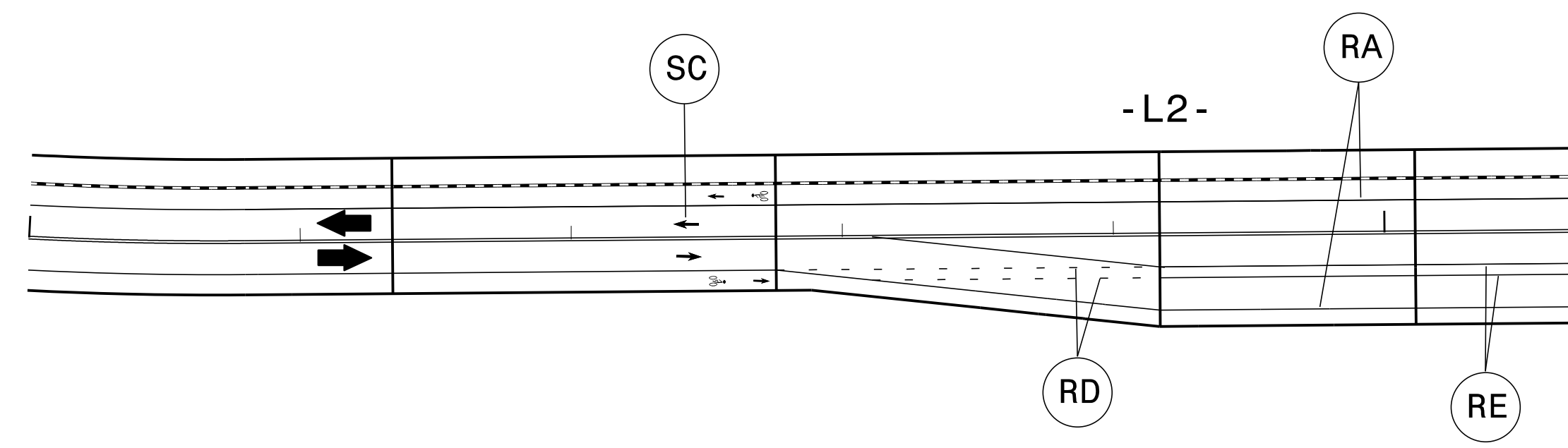


1

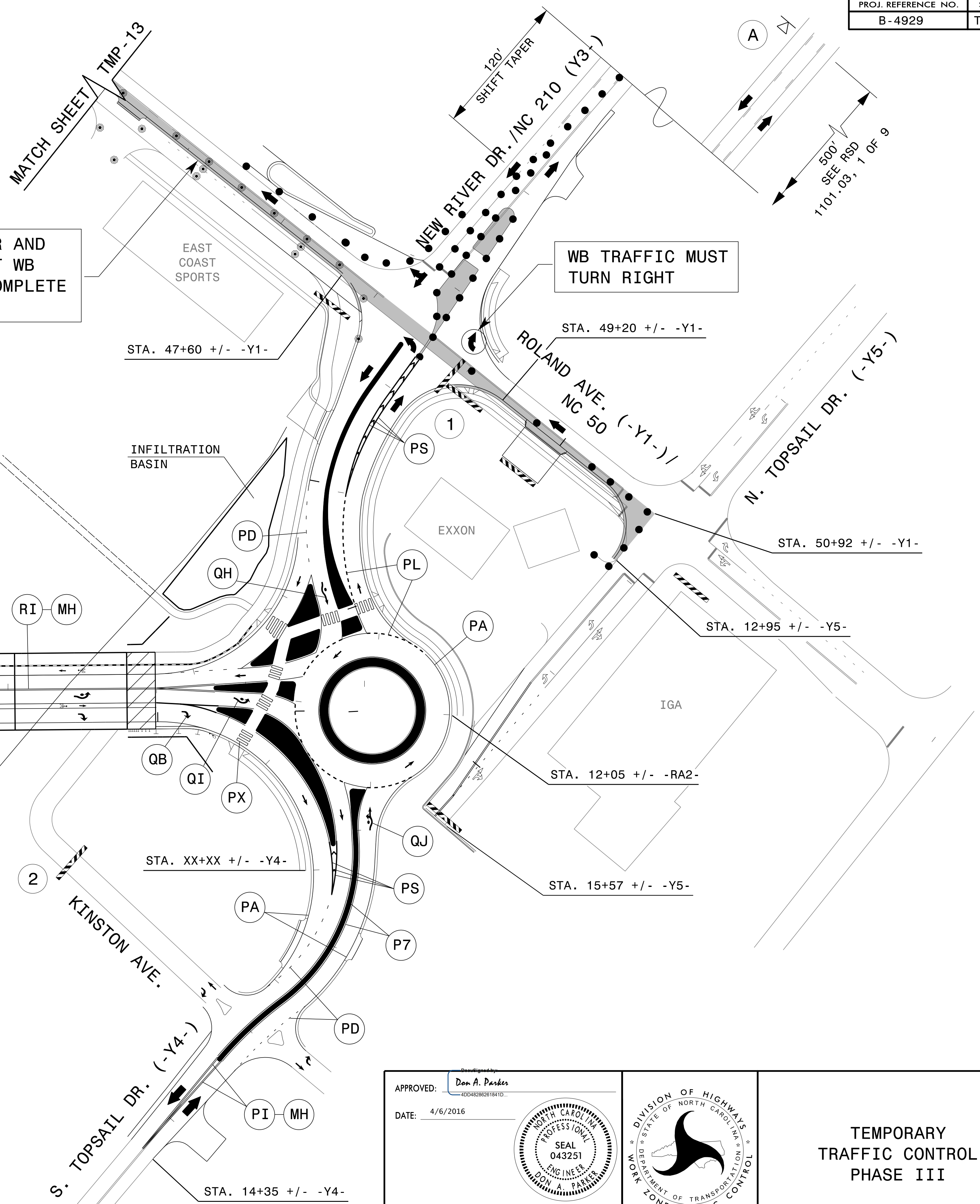
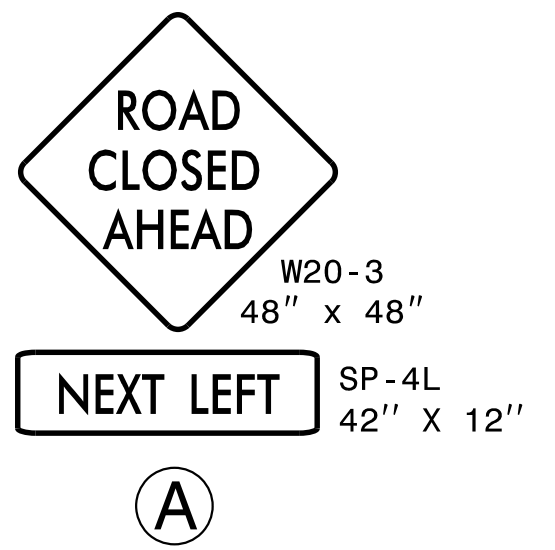


2

CONSTRUCT CURB AND GUTTER AND PAVE EB LANE. THEN SHIFT WB TRAFFIC TO EB LANE AND COMPLETE PAVING.



NOTE:  
THE REQUIREMENTS OF THE INCENTIVE/DISINCENTIVE PROJECT SPECIAL PROVISION SHALL BE MET UPON PLACEMENT OF TRAFFIC IN THE TEMPORARY PATTERN DETAILED HERE AND ON TMP-12.



APPROVED: *Don A. Parker*  
DATE: 4/6/2016

DOCUMENT NOT CONSIDERED FINAL  
UNLESS ALL SIGNATURES COMPLETED

TEMPORARY  
TRAFFIC CONTROL  
PHASE III

4/6/2016 P:\TIP\Projects-B\B4929\TrafficControl\TCP\B4929\_TC\_TMP\_14.dgn User:sngrreen