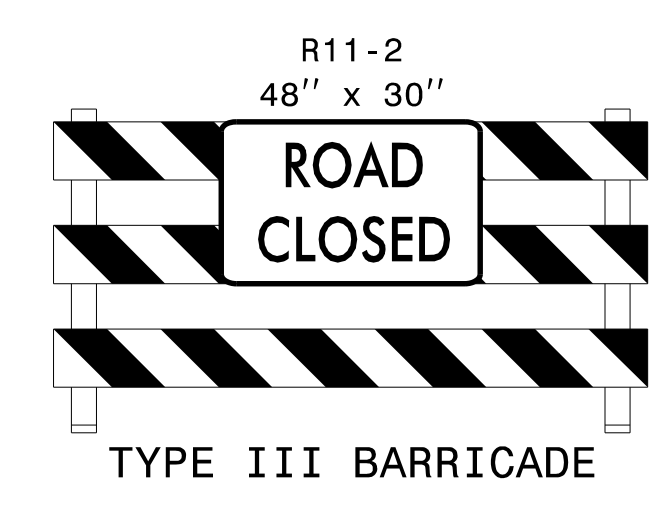
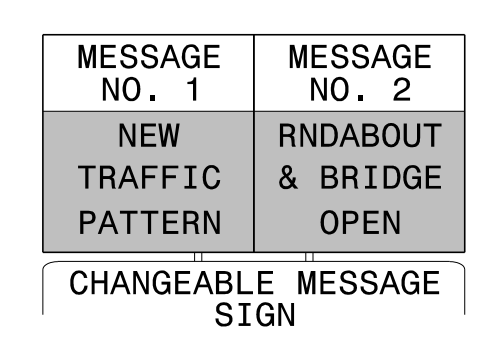


1



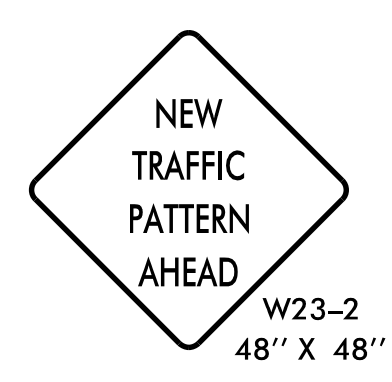
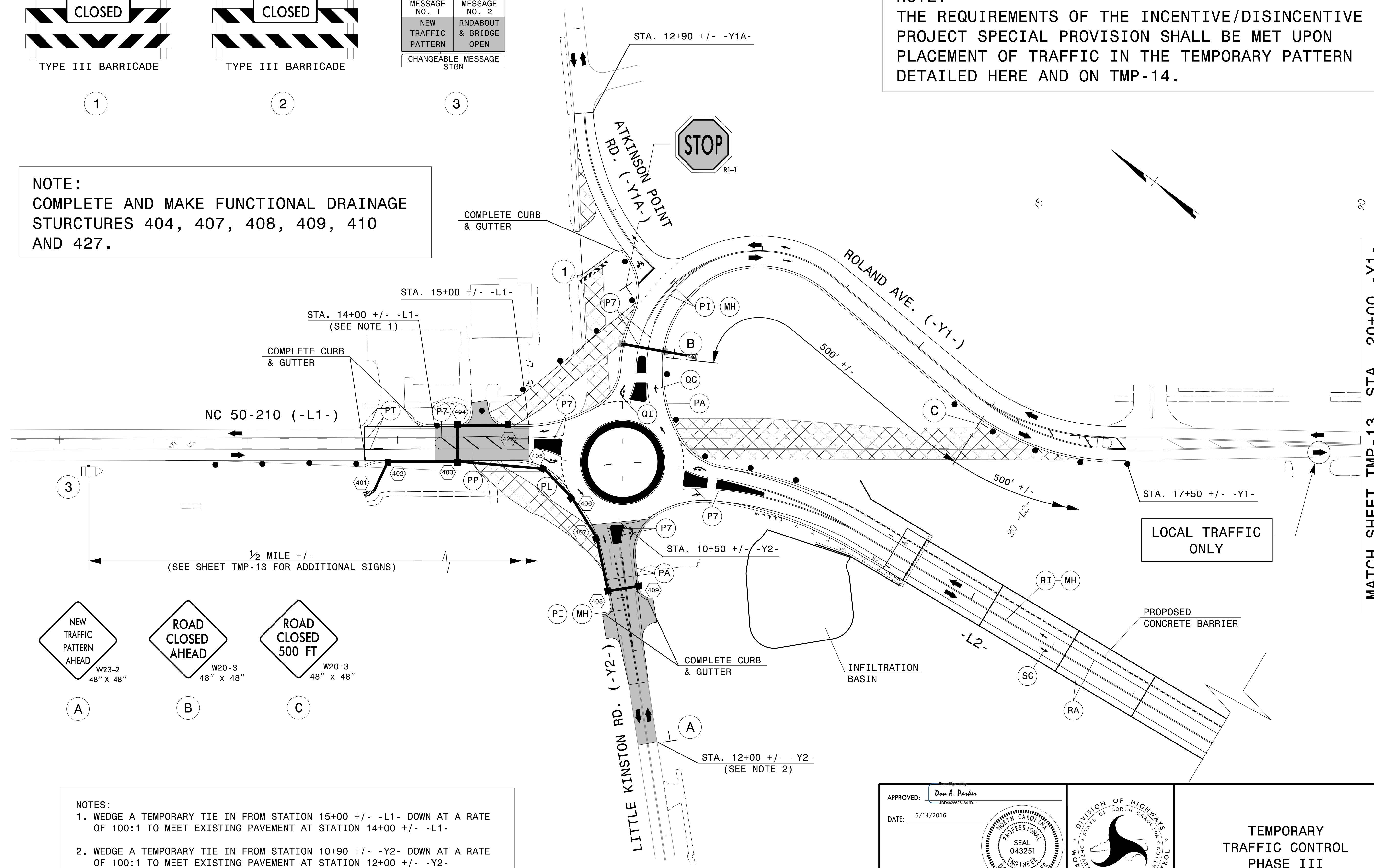
2



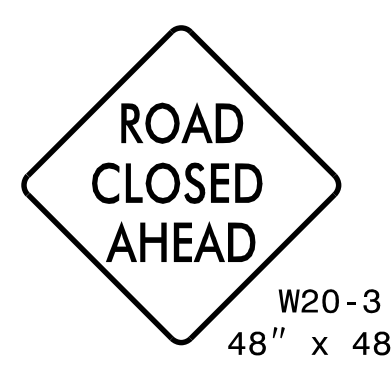
3

NOTE:
THE REQUIREMENTS OF THE INCENTIVE/DISINCENTIVE PROJECT SPECIAL PROVISION SHALL BE MET UPON PLACEMENT OF TRAFFIC IN THE TEMPORARY PATTERN DETAILED HERE AND ON TMP-14.

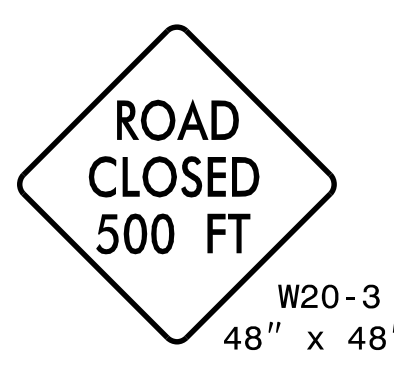
NOTE:
COMPLETE AND MAKE FUNCTIONAL DRAINAGE STURCTURES 404, 407, 408, 409, 410 AND 427.



A



B

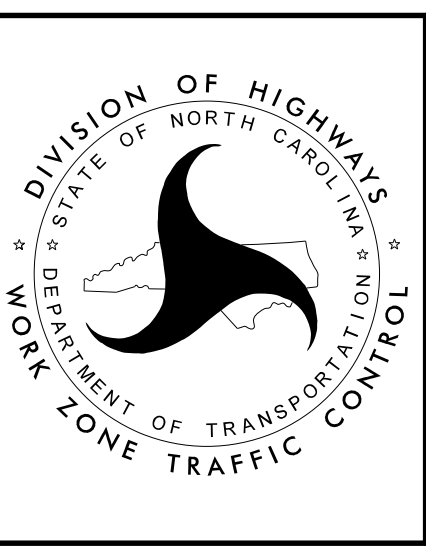


C

NOTES:
1. WEDGE A TEMPORARY TIE IN FROM STATION 15+00 +/- -L1- DOWN AT A RATE OF 100:1 TO MEET EXISTING PAVEMENT AT STATION 14+00 +/- -L1-
2. WEDGE A TEMPORARY TIE IN FROM STATION 10+90 +/- -Y2- DOWN AT A RATE OF 100:1 TO MEET EXISTING PAVEMENT AT STATION 12+00 +/- -Y2-

APPROVED: *Don A. Parker*
DATE: 6/14/2016

DOCUMENT NOT CONSIDERED FINAL UNLESS ALL SIGNATURES COMPLETED



TEMPORARY TRAFFIC CONTROL PHASE III

6/13/2016 P:\TIP\Projects-B\B4929\TrafficControl\TCP\B4929_TC_TMP_12.dgn User:sngrreen

MATCH SHEET TMP-13, STA. 20+00 -Y1-