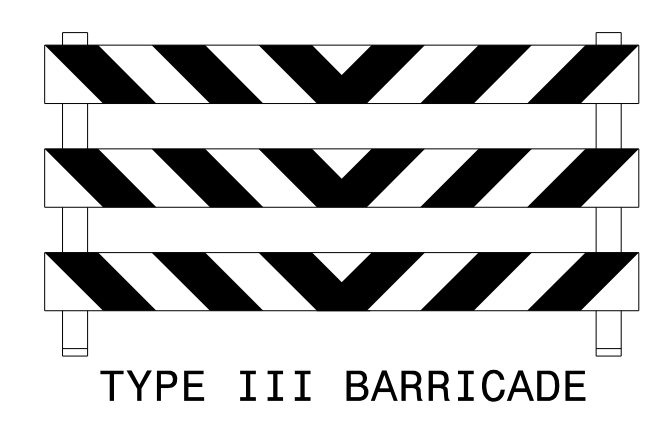
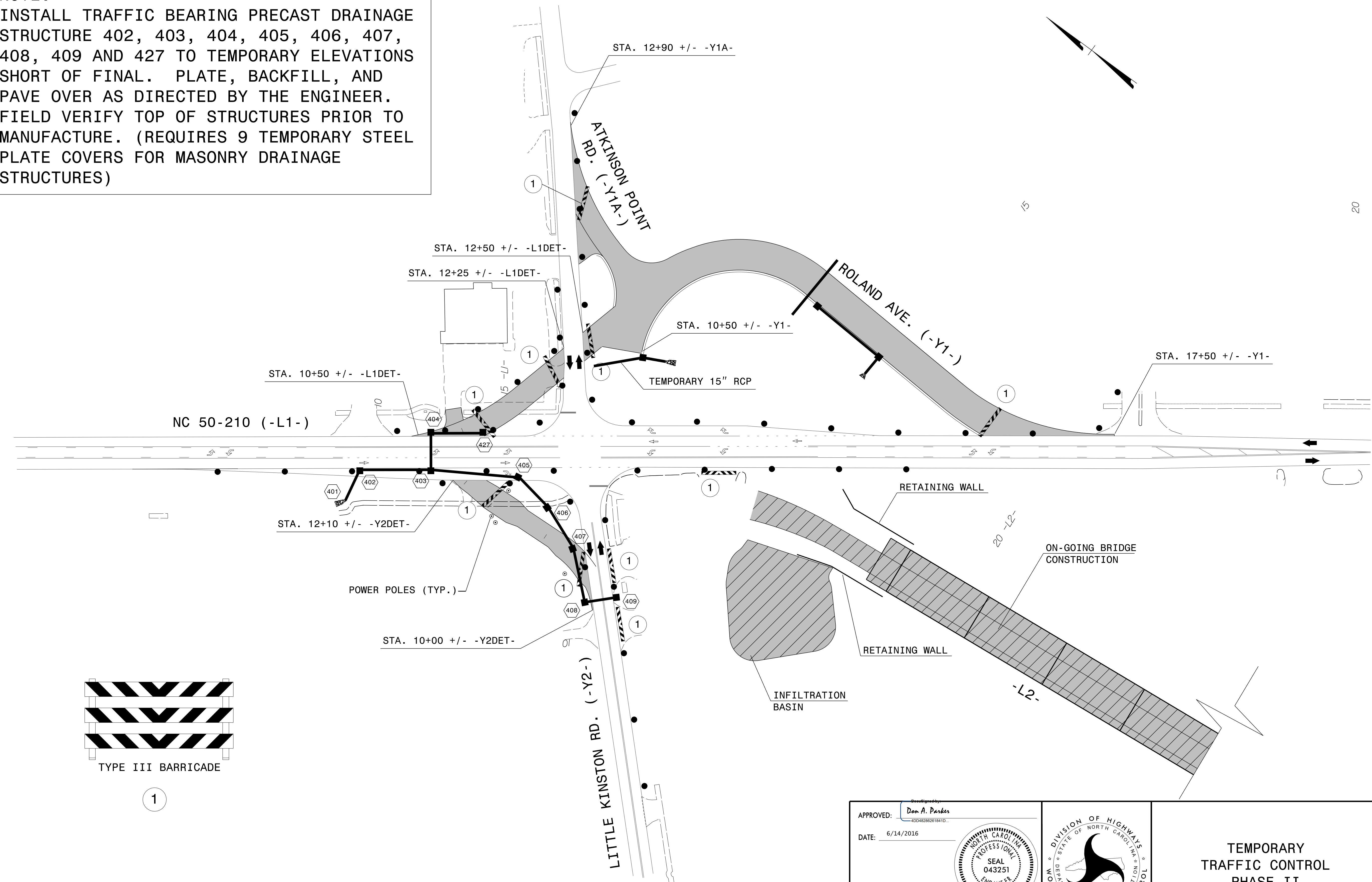


**NOTE:**  
 INSTALL TRAFFIC BEARING PRECAST DRAINAGE STRUCTURE 402, 403, 404, 405, 406, 407, 408, 409 AND 427 TO TEMPORARY ELEVATIONS SHORT OF FINAL. PLATE, BACKFILL, AND PAVE OVER AS DIRECTED BY THE ENGINEER. FIELD VERIFY TOP OF STRUCTURES PRIOR TO MANUFACTURE. (REQUIRES 9 TEMPORARY STEEL PLATE COVERS FOR MASONRY DRAINAGE STRUCTURES)



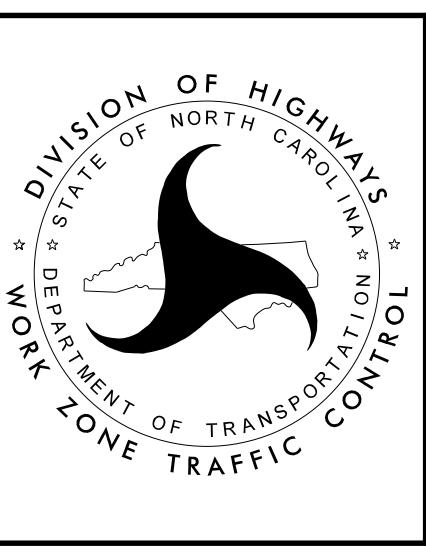
1

APPROVED: *Don A. Parker*  
40D48286261841D

DATE: 6/14/2016

SEAL  
 043251  
 ENGINEER  
 DON A. PARKER

**DOCUMENT NOT CONSIDERED FINAL  
 UNLESS ALL SIGNATURES COMPLETED**



**TEMPORARY  
 TRAFFIC CONTROL  
 PHASE II**

6/13/2016  
 P:\TIP\Projects-B\B4929\TrafficControl\TCP\B4929\_TC\_TMP\_07.dgn  
 User:sngrreen