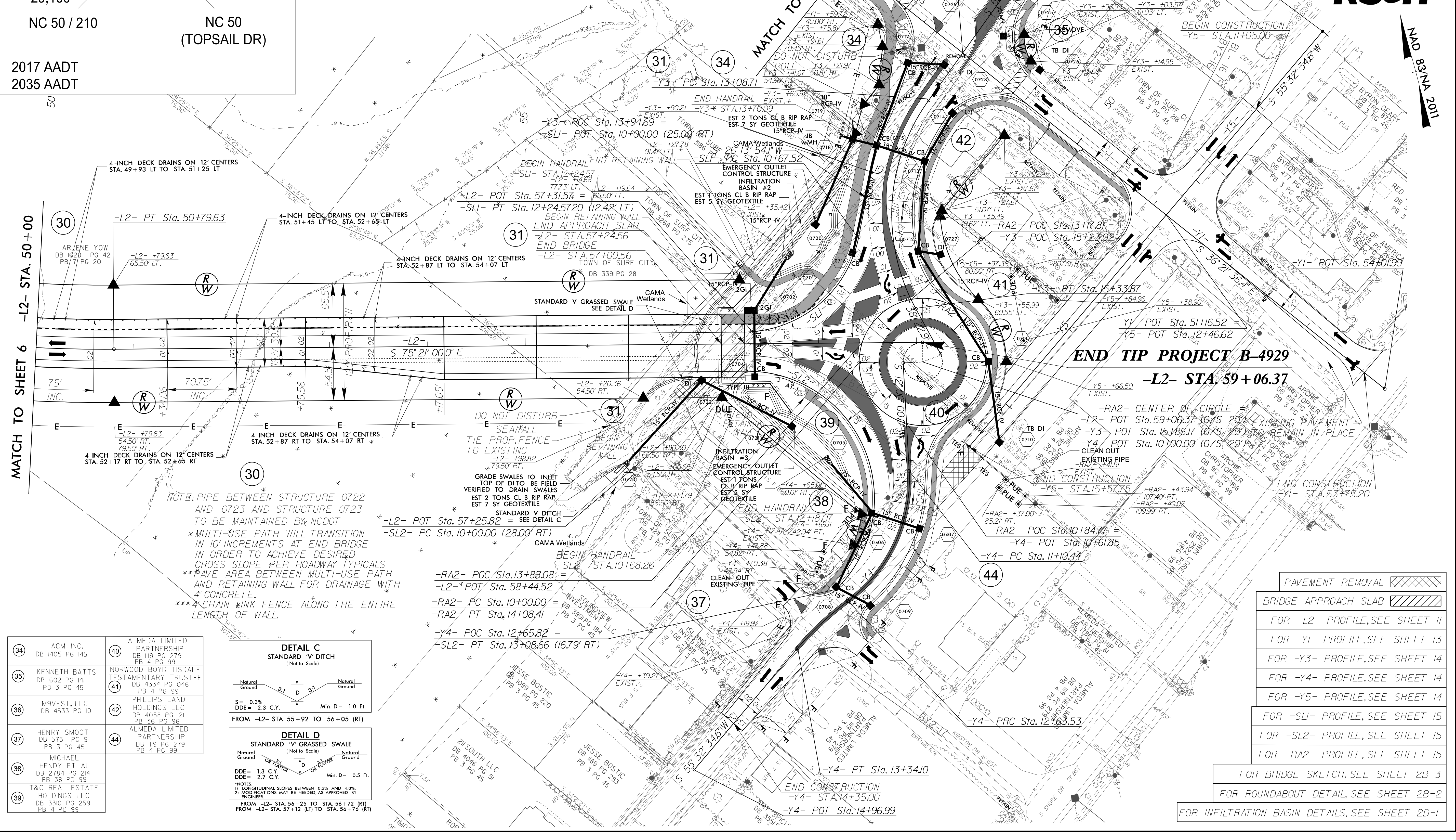


PROJECT REFERENCE NO. B-4929	SHEET NO. 7
RW SHEET NO.	HYDRAULICS ENGINEER
ROADWAY DESIGN ENGINEER	SEAL
DOCUMENT NOT CONSIDERED FINAL UNLESS ALL SIGNATURES COMPLETED	

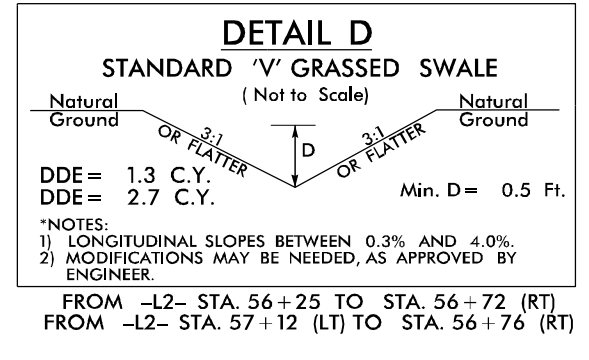
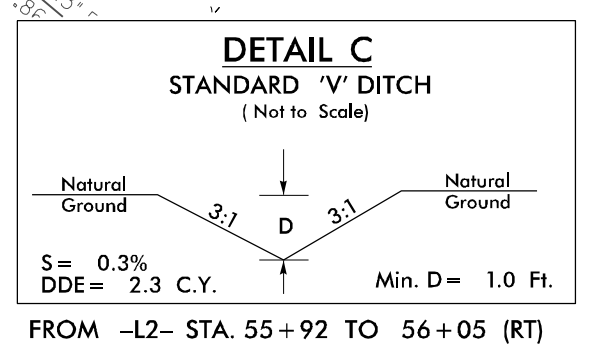


NC 210 (NEW RIVER DR)	TRAFFIC VOLUME DATA
11,900 19,400	
9,700 16,100	
16,800 29,100	
7,100 13,000	
9,300 16,300	
NC 50 / 210	NC 50 (TOPSAIL DR)
2017 AADT	2035 AADT

-L2- CURVE DATA PI Sta 43+66.28 Δ = 69° 48' 47.1" (LT) D = 4' 10" 55.8" L = 1,669.30' T = 955.96' V = 1,370.00' R = 40 MPH SE = 03 RO = SEE PLANS	-Y3- CURVE DATA PI Sta 10+15.20 Δ = 5° 08' 12.84" (LT) D = 28° 38' 52.4" L = 17.93' T = 8.97' R = 200.00'	-Y3- CURVE DATA PI Sta 14+34.91 Δ = 64° 30' 12.46" (LT) D = 28° 38' 52.4" L = 225.16' T = 126.20' R = 200.00'	-Y4- CURVE DATA PI Sta 11+93.88 Δ = 56° 35' 15.0" (RT) D = 36° 57' 54.1" L = 153.08' T = 83.44' R = 155.00'	-Y4- CURVE DATA PI Sta 12+98.97 Δ = 13° 02' 40.4" (LT) D = 18° 28' 57.0" L = 70.58' T = 35.44' R = 310.00'
-RA2- CURVE DATA PI Sta 10+00.00 Δ = 360° 00' 00.0" (LT) D = 88° 08' 50.5" L = 408.41' T = 0.00' R = 65.00'	-SL1- CURVE DATA PI Sta 11+56.39 Δ = 83° 37' 32.2" (RT) D = 47° 44' 47.3" L = 175.15' T = 107.34' R = 120.00'	-SL2- CURVE DATA PI Sta 13+22.06 Δ = 136° 02' 14.3" (RT) D = 44° 04' 25.2" L = 308.66' T = 322.06' R = 130.00'		



34	ACM INC. DB 1405 PG 145	40	ALMEDA LIMITED PARTNERSHIP DB 1119 PG 279 PB 4 PG 99
35	KENNETH BATTS DB 602 PG 141 PB 3 PG 45	41	NORWOOD BOYD TISDALE TESTAMENTARY TRUSTEE DB 434 PG 046 PB 4 PG 99
36	M9VEST, LLC DB 4533 PG 101	42	PHILLIPS LAND HOLDINGS LLC DB 4058 PG 121 PB 36 PG 96
37	HENRY SMOOT DB 575 PG 9 PB 3 PG 45	44	ALMEDA LIMITED PARTNERSHIP DB 1119 PG 279 PB 4 PG 99
38	MICHAEL HENDY ET AL DB 2784 PG 214 PB 38 PG 99		
39	T&C REAL ESTATE HOLDINGS LLC DB 3310 PG 259 PB 4 PG 99		



PAVEMENT REMOVAL	
BRIDGE APPROACH SLAB	
FOR -L2- PROFILE, SEE SHEET 11	
FOR -Y1- PROFILE, SEE SHEET 13	
FOR -Y3- PROFILE, SEE SHEET 14	
FOR -Y4- PROFILE, SEE SHEET 14	
FOR -Y5- PROFILE, SEE SHEET 14	
FOR -SL1- PROFILE, SEE SHEET 15	
FOR -SL2- PROFILE, SEE SHEET 15	
FOR -RA2- PROFILE, SEE SHEET 15	
FOR BRIDGE SKETCH, SEE SHEET 2B-3	
FOR ROUNDABOUT DETAIL, SEE SHEET 2B-2	
FOR INFILTRATION BASIN DETAILS, SEE SHEET 2D-1	

8.17.17.99
 REVISIONS
 4/22/2016
 2:36:05 PM
 P:\proj\B4929_Rdy_psh_07.dgn