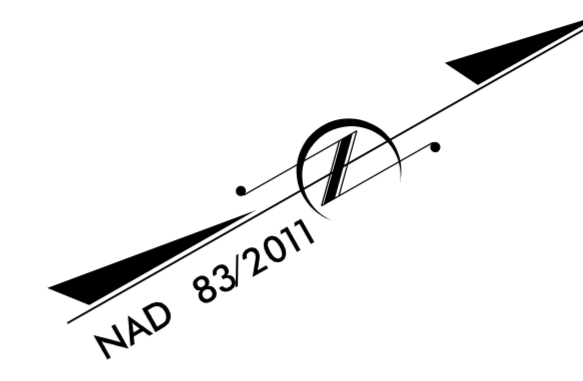


UTILITIES BY OTHERS

NOTE:
 ALL PROPOSED UTILITY WORK SHOWN ON THIS SHEET WILL BE DONE BY OTHERS. NO PAYMENT WILL BE MADE TO THE CONTRACTOR FOR PROPOSED UTILITY WORK SHOWN ON THIS SHEET.



BEGIN TIP PROJECT W-5203AA
 BEGIN CONSTRUCTION
 -L- POC Sta. 416+00.00
 US 117 NB - MP 4.959
 US 117 SB - MP 10.598

AT&T TO RELOCATE 200PR DURING CONSTRUCTION OF STORM DRAINAGE.
 CONTRACTOR TO COORDINATE WITH AT&T. SEE SPECIAL PROVISIONS.

TWC CATV TO BE RELOCATED

BEGIN CONSTRUCTION
 -YI- POT Sta. 12+70.00

-YI- PT Sta. 12+71.41

-YI- POT Sta. 10+00.00

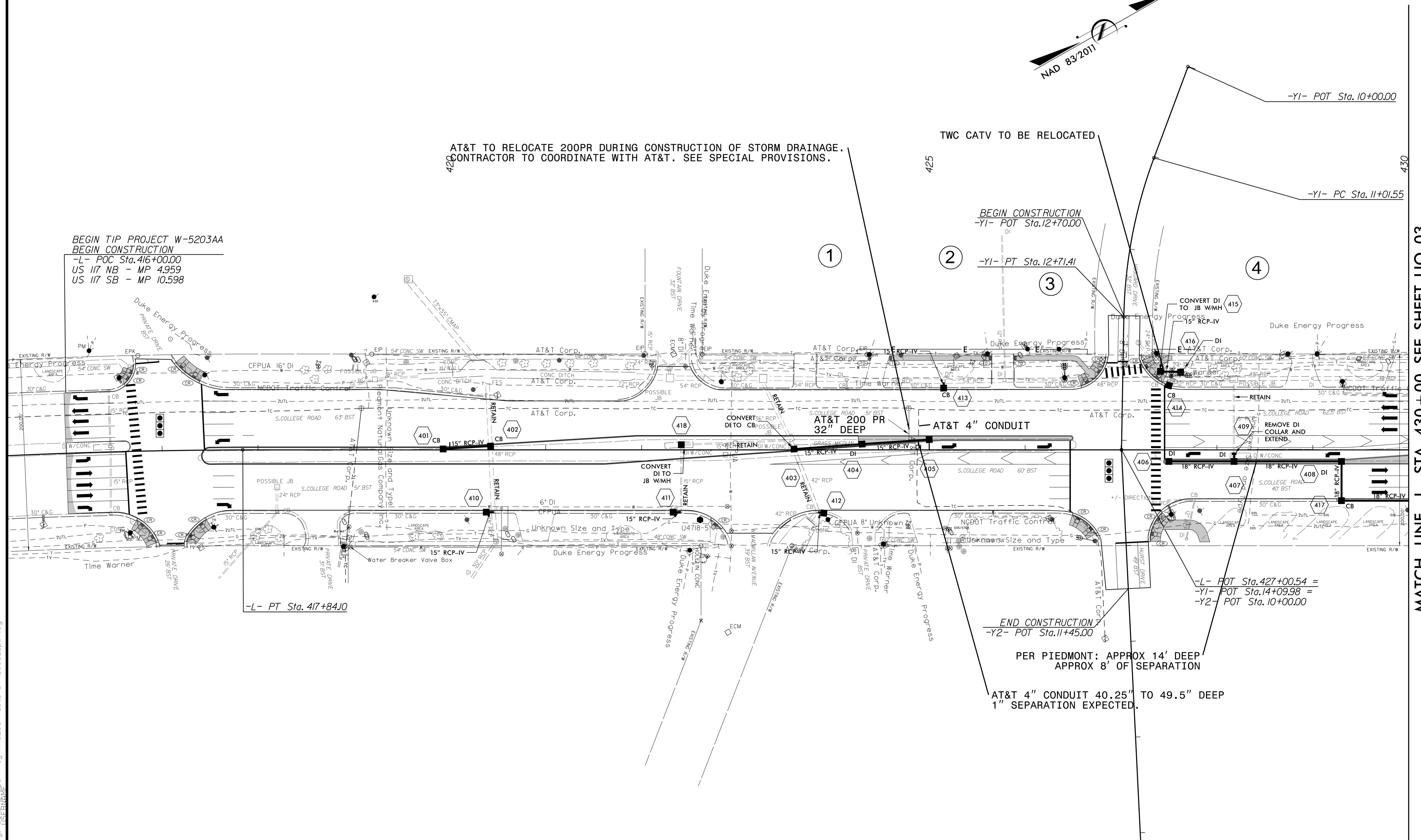
-YI- PC Sta. 11+01.55

-L- POT Sta. 427+00.54 =
 -YI- POT Sta. 14+09.98 =
 -Y2- POT Sta. 10+00.00

END CONSTRUCTION
 -Y2- POT Sta. 11+45.00

PER PIEDMONT: APPROX 14' DEEP
 APPROX 8' OF SEPARATION

AT&T 4" CONDUIT 40.25" TO 49.5" DEEP
 1" SEPARATION EXPECTED.



MATCH LINE -L- STA 430+00 SEE SHEET UO-03

5/14/99
 5/25/2016
 C:\Users\p0601\OneDrive\Projects\W-5203AA\ut_L\RDY4_U002_psh.dgn