

**NOTE**

CONTRACTOR SHALL SAW CUT TO A NOMINAL DEPTH OF 1/2" BUT REINFORCING STEEL SHALL NOT BE DAMAGED.

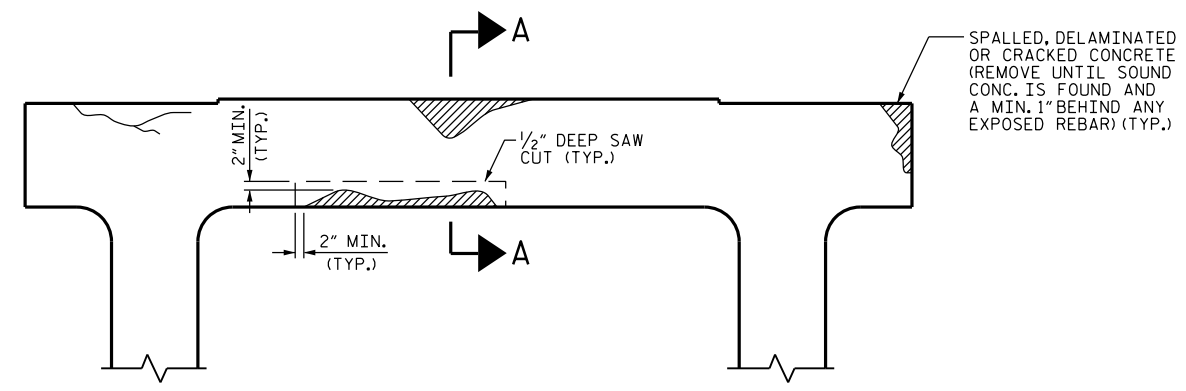
CONTRACTOR SHALL REMOVE SURFACE CONCRETE TO VERIFY THAT SAWCUT DEPTH WILL NOT DAMAGE EXISTING REINFORCING STEEL.

CONTRACTOR SHALL SAW CUT THE REPAIR AREAS SO THAT THE CORNERS ARE SQUARE AS INDICATED ON THE DETAILS.

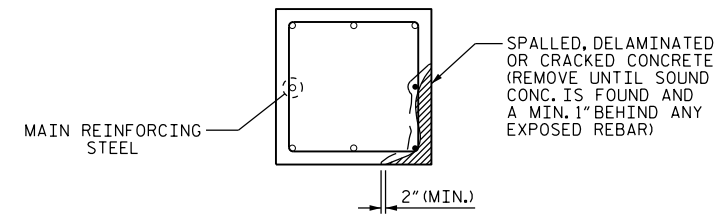
CONCRETE REPAIRS MAY BE SUBSTITUTED IN LIEU OF SHOTCRETE REPAIRS WITH THE APPROVAL OF THE ENGINEER.

FOR SHOTCRETE REPAIRS, SEE SPECIAL PROVISIONS.

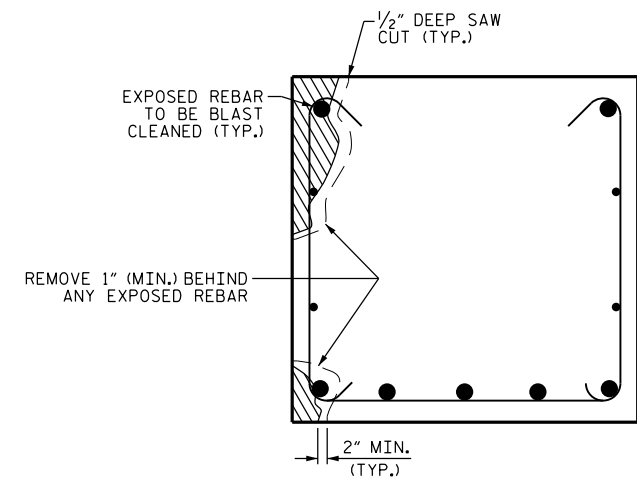
FOR EPOXY RESIN INJECTION, SEE SPECIAL PROVISIONS.



**BENT CAP REPAIRS**

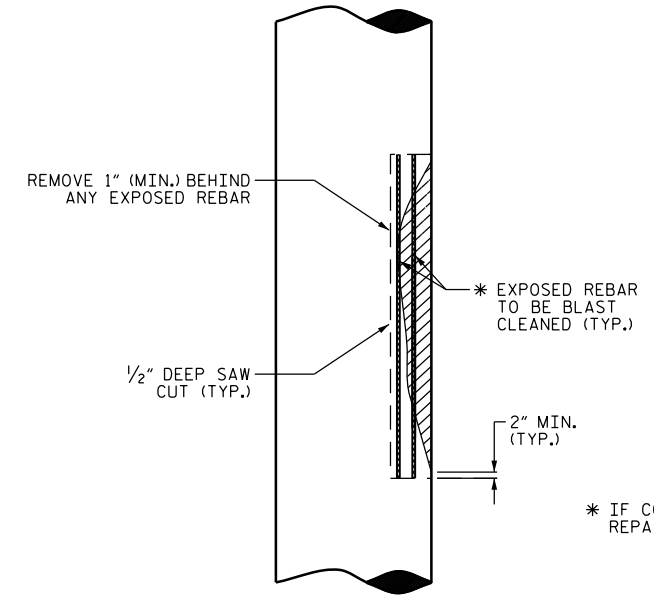


**PLAN OF COLUMN**



**SECTION THRU CAP**  
(EXAMPLE ONLY, ACTUAL REBAR SIZES & LOCATIONS MAY VARY)

**CAP REPAIR**



**ELEVATION OF CAP**

**COLUMN REPAIR**

DocuSigned by:  
*W. Matthew Clarke*  
1EB20097EAAF437...



3/31/2016

PROJECT NO. I-5789  
GUILFORD COUNTY  
BRIDGE NO. 142 & 144

STATE OF NORTH CAROLINA  
DEPARTMENT OF TRANSPORTATION  
RALEIGH

**SUBSTRUCTURE**  
TYPICAL CAP AND COLUMN  
REPAIR DETAILS

DRAWN BY : S. T. SANDOR DATE : 02/2016  
CHECKED BY : W. M. CLARKE DATE : 02/2016

DOCUMENT NOT CONSIDERED  
FINAL UNLESS ALL  
SIGNATURES COMPLETED

REVISIONS						SHEET NO.
NO.	BY:	DATE:	NO.	BY:	DATE:	S-34
1			3			TOTAL SHEETS
2			4			37