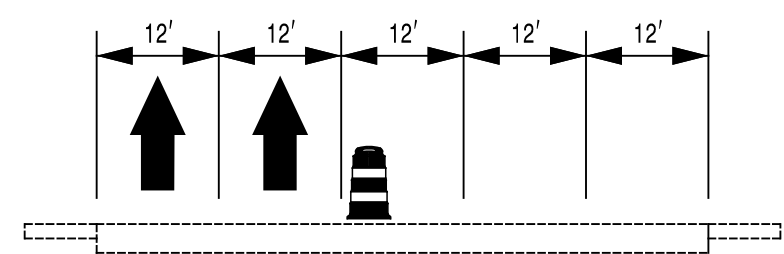
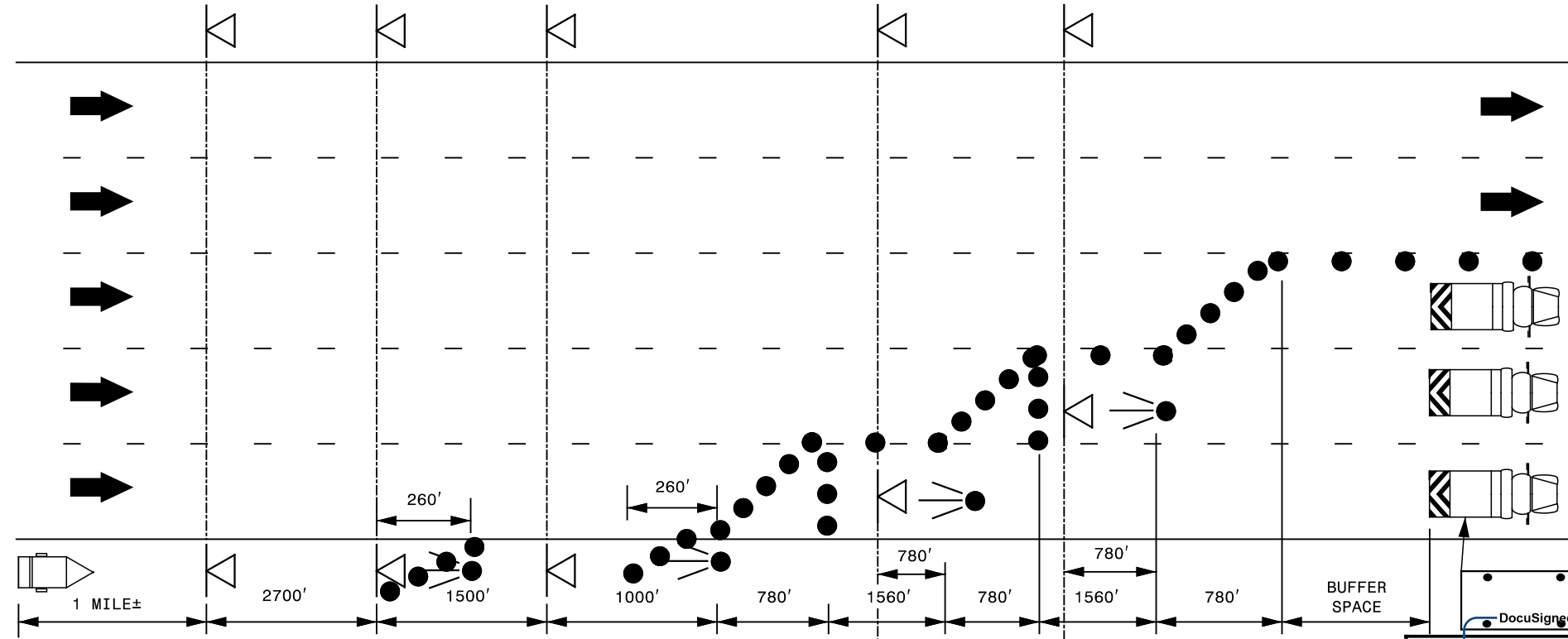
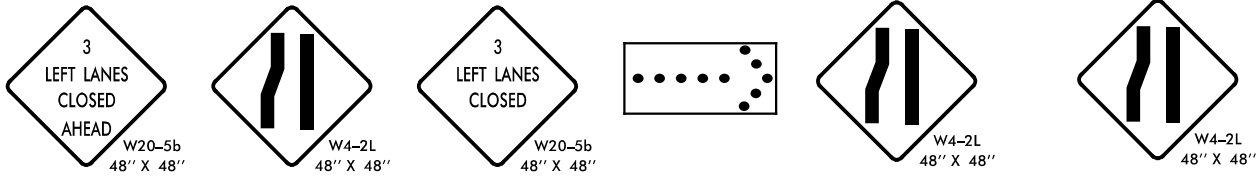
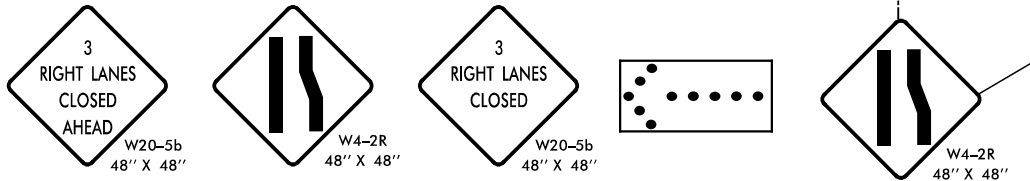


MESSAGE NO. 1	MESSAGE NO. 2
LEFT THREE LANES	CLOSED NEXT XX MILES
CHANGEABLE MESSAGE SIGN	



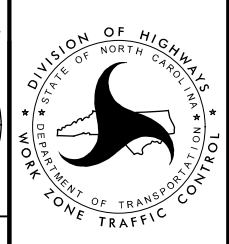
MESSAGE NO. 1	MESSAGE NO. 2
RIGHT THREE LANES	CLOSED NEXT XX MILES
CHANGEABLE MESSAGE SIGN	



APPROVED: *Steve Miller*
 DATE: 3/10/2016

SEPI
 ENGINEERING & CONSTRUCTION
 1025 Wade Avenue
 Raleigh, NC 27605
 Tel: 919-789-9977
 Fax: 919-789-9591
 License: C-2197

SEAL
 DOCUMENT NOT CONSIDERED FINAL
 UNLESS ALL SIGNATURES COMPLETED



LANE CLOSURE TYPICAL

3/10/2016 10:51:10 AM G:\Tr\off\10\TRIS\026.00 I-5789 & I-5821 TMP\TMP\I-5789_5821 TMP-6.dgn