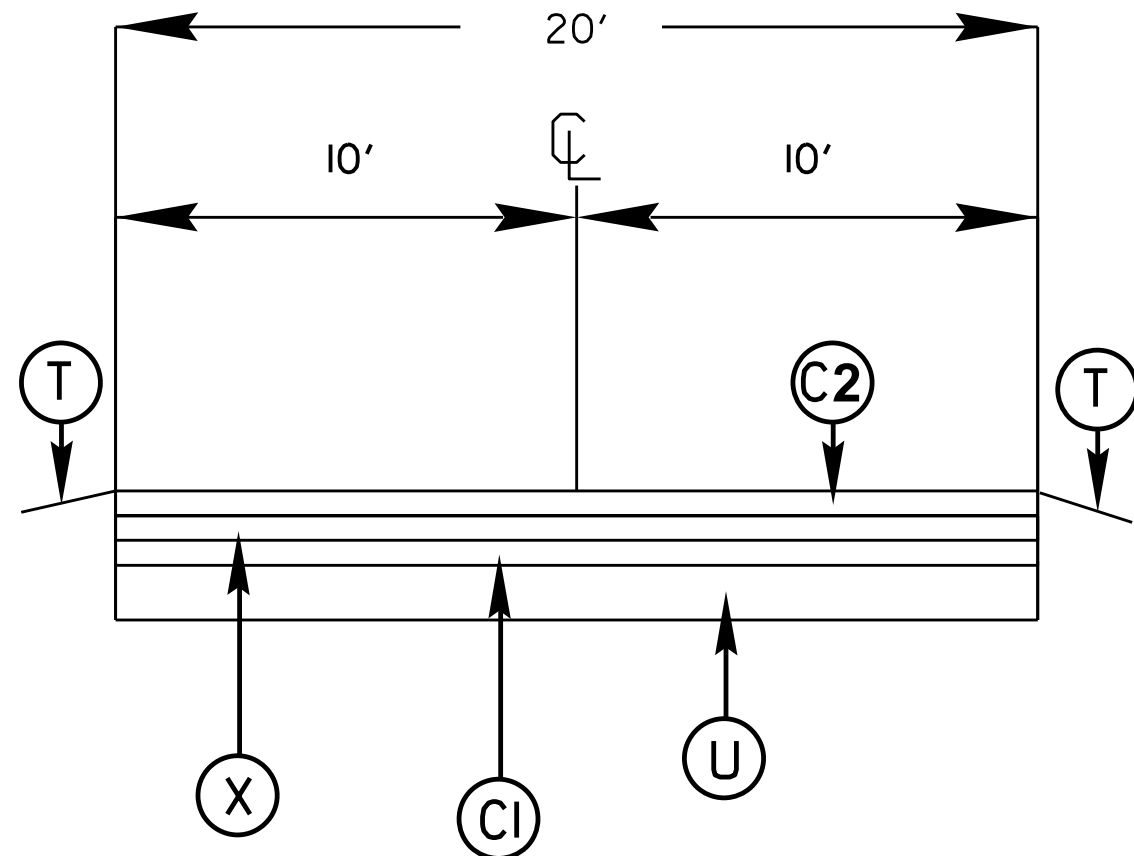


TYPICAL 12



SURFACING SCHEDULE

ITEM NO	DESCRIPTION
C1	PROP. APPROX. 3/4" ASPHALT CONCRETE SURFACE COURSE, (LEVELING) TYPE SF9.5A AT AN AVERAGE RATE OF 82.5 LBS.PER.SQ.YD
C2	PROP. APPROX. 1 1/4" ASPHALT CONCRETE SURFACE COURSE, TYPE SF9.5A, AT AN AVERAGE RATE OF 137.5 LBS. PER SQ YD
C3	PROP. APPROX. 1 " ASPHALT CONCRETE SURFACE COURSE, (LEVELING) TYPE S9.5B AT AN AVERAGE RATE OF 112 LBS PER SQ.YD.
C4	PROP. APPROX. 1 1/2" ASPHALT CONCRETE SURFACE COURSE, TYPE S9.5B, AT AN AVERAGE RATE OF 168 LBS. PER SQ. YD
C5	PROP. APPROX. 2" ASPHALT CONCRETE SURFACE COURSE, TYPE S9.5B, AT AN AVERAGE RATE OF 224 LBS. PER SQ YD
C6	PROP. APPROX. VAR.DEPTH ASPHALT CONCRETE SURFACE COURSE, TYPE SF9.5A (LEVELING)OF TYPICAL ONLY
D1	PROP. APPROX. 3" ASPHALT CONCRETE INTERMEDIATE COURSE, TYPE I19.OB, AT AN AVERAGE RATE OF 342 LBS. PER SQ YD
D2	ASPHALT CONCRETE INTERMEDIATE (WEDGING) COURSE TYPE I19.OB, AT AN AVERAGE RATE OF A VARIABLE RATE
E1	PROP. APPROX. 4" ASPHALT CONCRETE BASE COURSE, TYPE B25.OB, AT AN AVERAGE RATE OF 456 LBS. PER SQ YD
T	SHOULDER RECONSTRUCTION SEE PROJECT SPECIAL PROVISIONS
U	EXISTING ASPHALT
V1	MILLED ASPHALT PAVEMENT 0" TO 2" IN DEPTH IN LOCATIONS AS DIRECTED BY PROJECT ENGINEER
V2	MILLED ASPHALT PAVEMENT 2" IN DEPTH IN LOCATIONS AS DIRECTED BY PROJECT ENGINEER
V3	MILLED ASPHALT PAVEMENT 3" IN DEPTH IN LOCATIONS AS DIRECTED BY PROJECT ENGINEER
V4	MILLED ASPHALT PAVEMENT 4" IN DEPTH IN LOCATIONS AS DIRECTED BY PROJECT ENGINEER
X	PAVEMENT INTERLAYER-SEE PROJECT SPECIAL PROVISIONS

PROJECT REFERENCE NO.		SHEET NO.
2017CPT.14.03.10221.1,ETC		28
STATE PROJECT	F.A. PROJECT NO.	DESCRIPTION