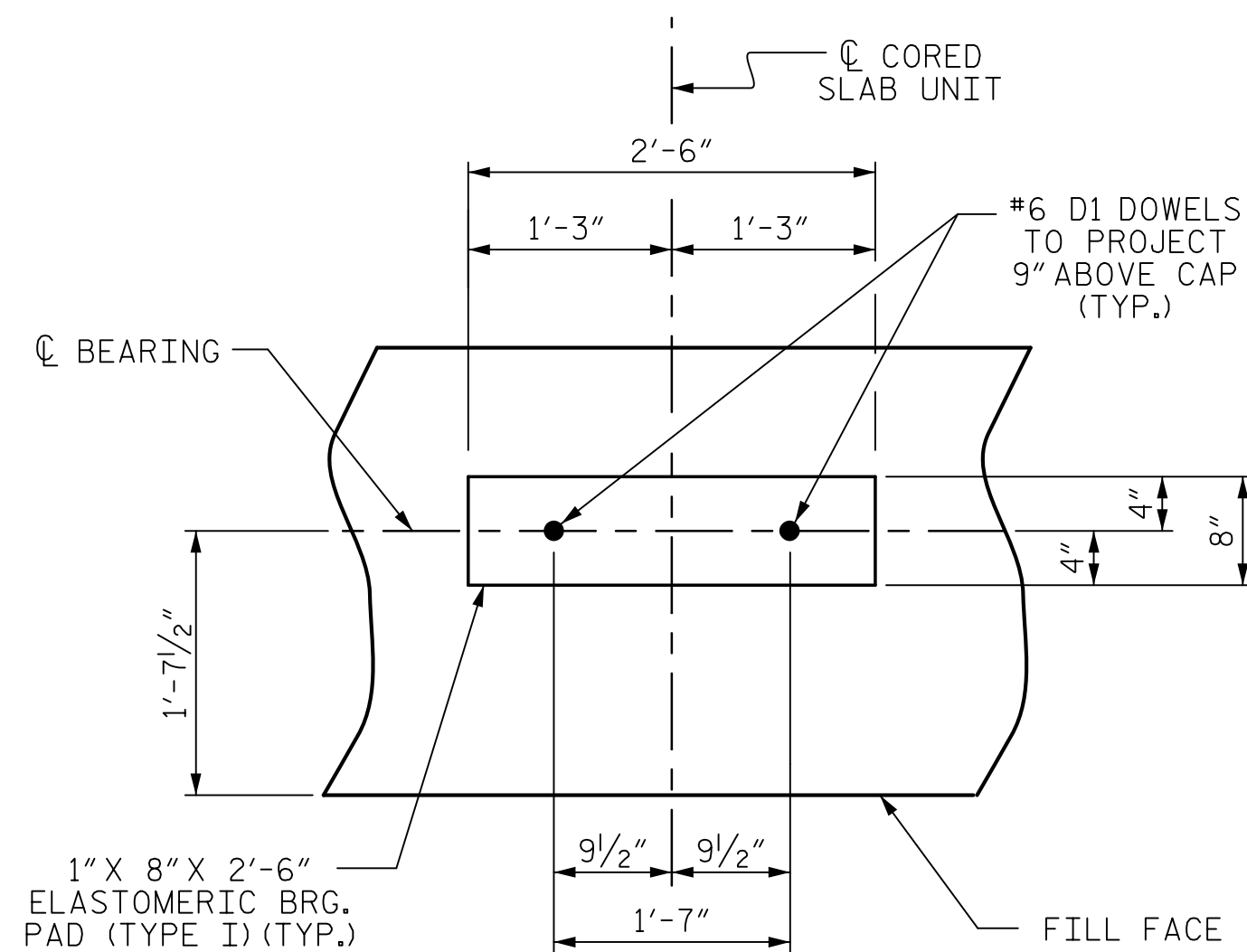


BAGGED STONE AND PIPE SHALL BE PLACED IMMEDIATELY AFTER COMPLETION OF END BENT EXCAVATION. PIPE MAY BE EITHER CONCRETE, CORRUGATED STEEL, CORRUGATED ALUMINUM ALLOY, OR CORRUGATED PLASTIC. PERFORATED PIPE WILL NOT BE ALLOWED.

BAGGED STONE SHALL REMAIN IN PLACE UNTIL THE ENGINEER DIRECTS THAT IT BE REMOVED. THE CONTRACTOR SHALL REMOVE AND DISPOSE OF SILT ACCUMULATIONS AT BAGGED STONE WHEN SO DIRECTED BY THE ENGINEER. BAGS SHALL BE REMOVED AND REPLACED WHENEVER THE ENGINEER DETERMINES THAT THEY HAVE DETERIORATED AND LOST THEIR EFFECTIVENESS.

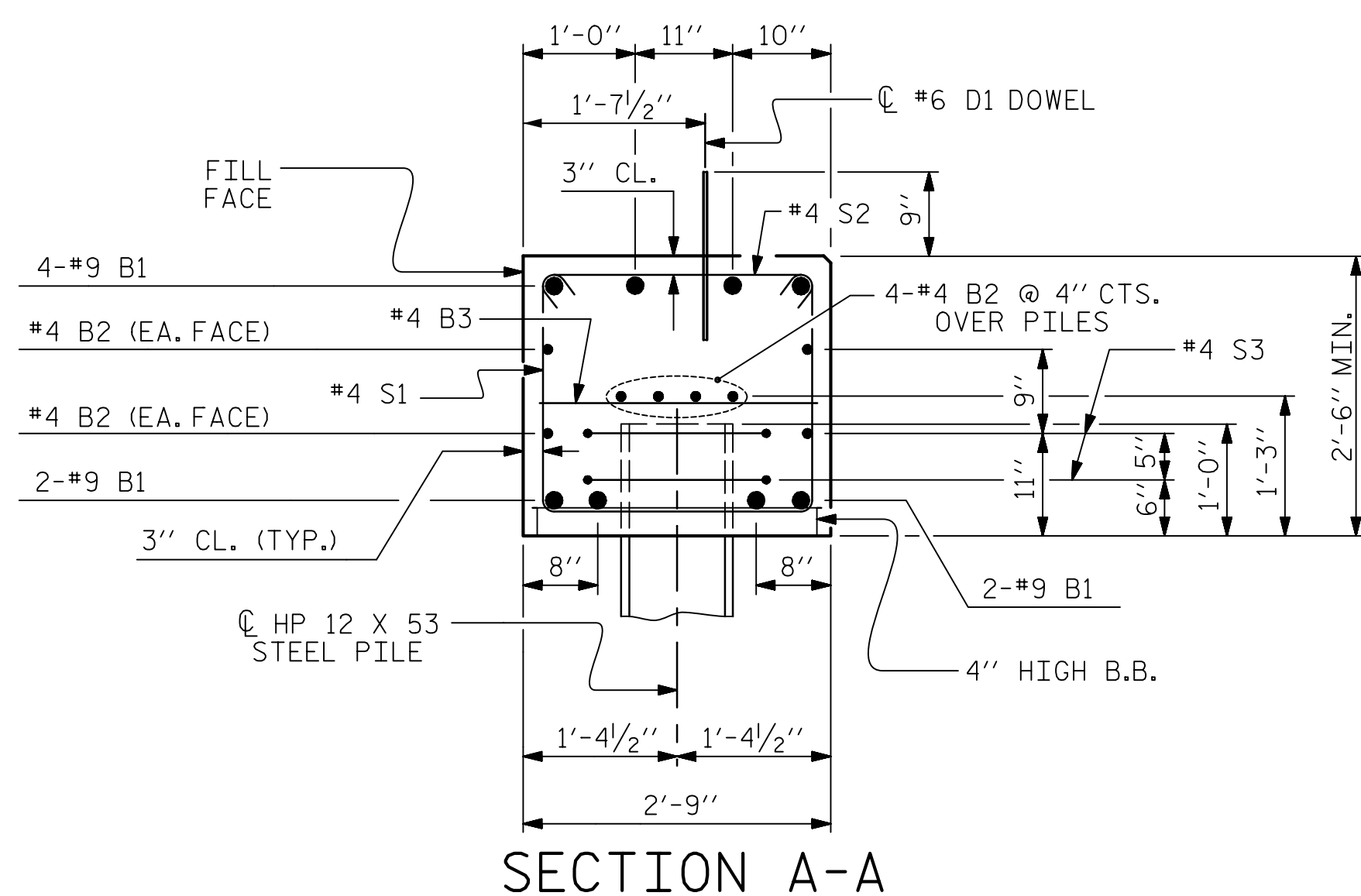
NO SEPARATE PAYMENT WILL BE MADE FOR THIS WORK AND THE ENTIRE COST OF THIS WORK SHALL BE INCLUDED IN THE UNIT CONTRACT PRICE BID FOR THE SEVERAL PAY ITEMS.

TEMPORARY DRAINAGE AT END BENT



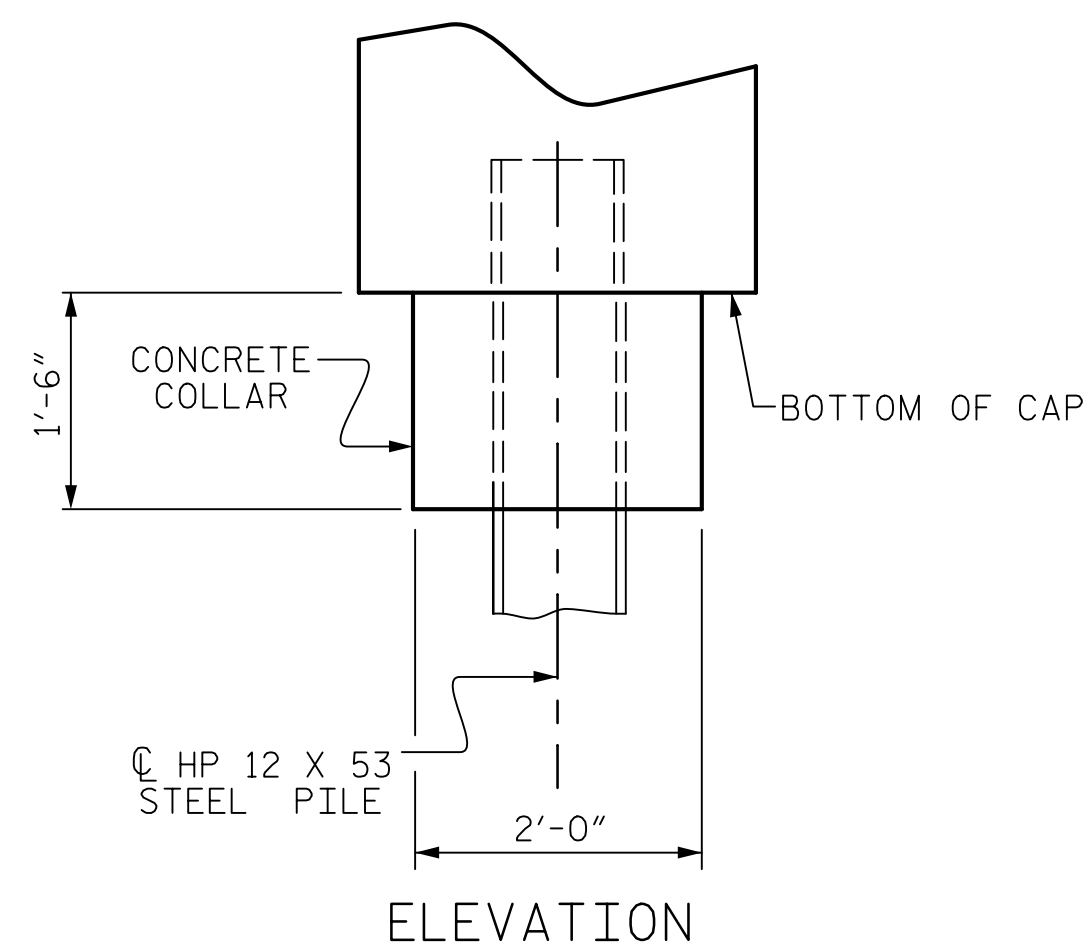
DETAIL "A"

(END BENT No. 1 SHOWN, END BENT No. 2 SIMILAR BY ROTATION)

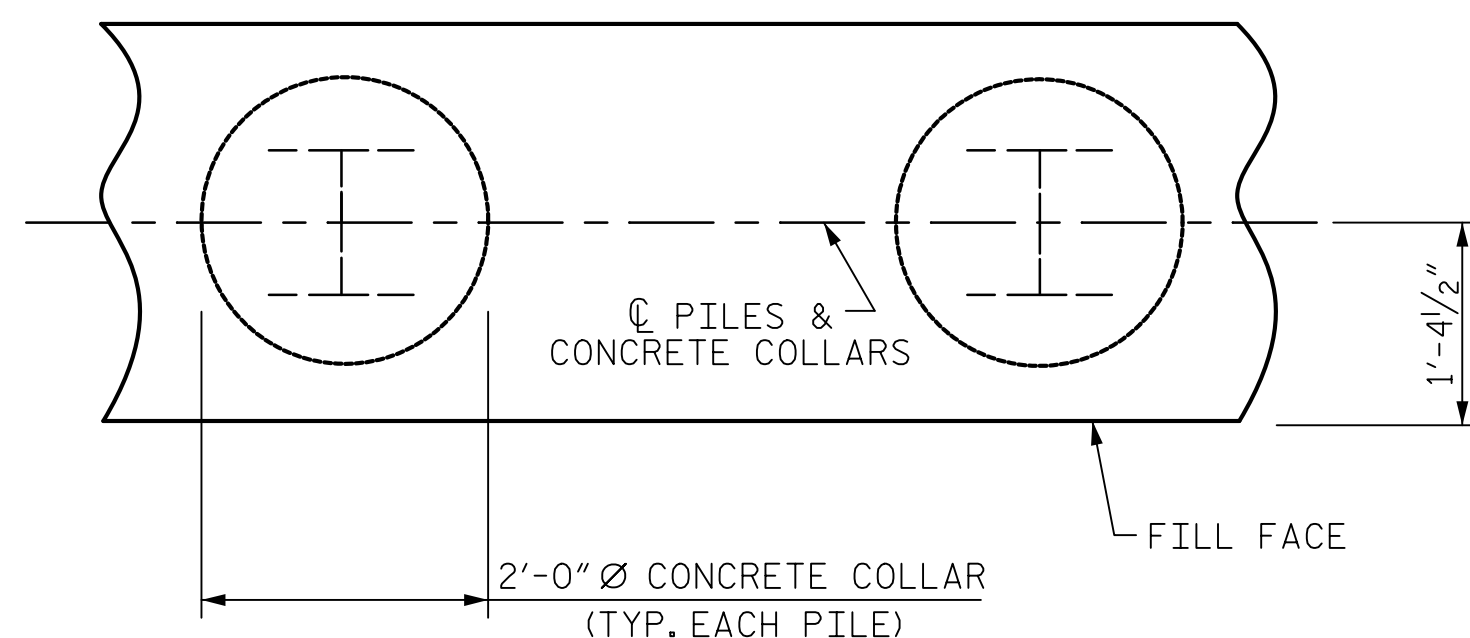


SECTION A-A

(CONCRETE COLLAR NOT SHOWN FOR CLARITY. SEE "CORROSION PROTECTION FOR STEEL PILES DETAIL.")



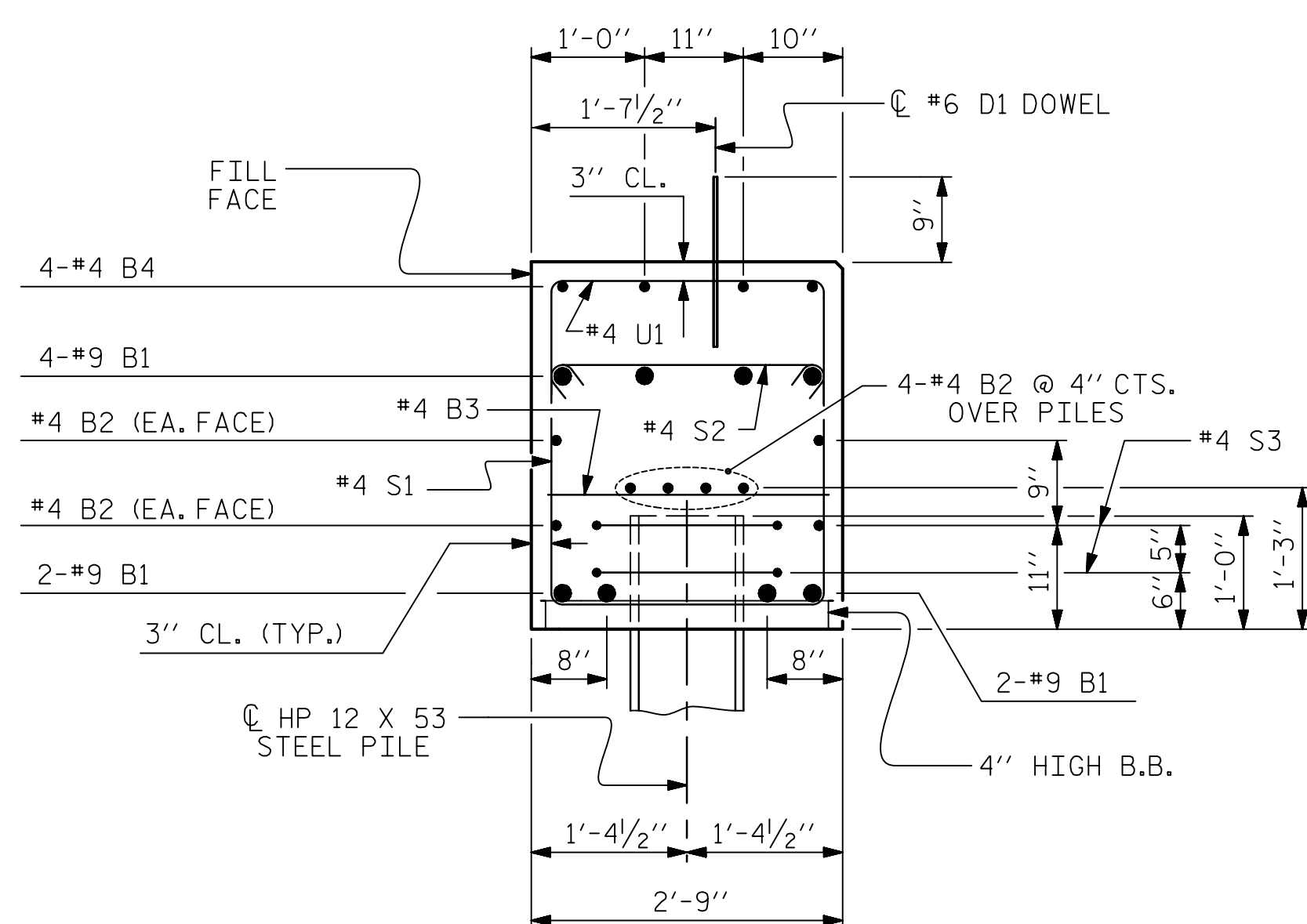
ELEVATION



PLAN

CORROSION PROTECTION FOR STEEL PILES DETAIL

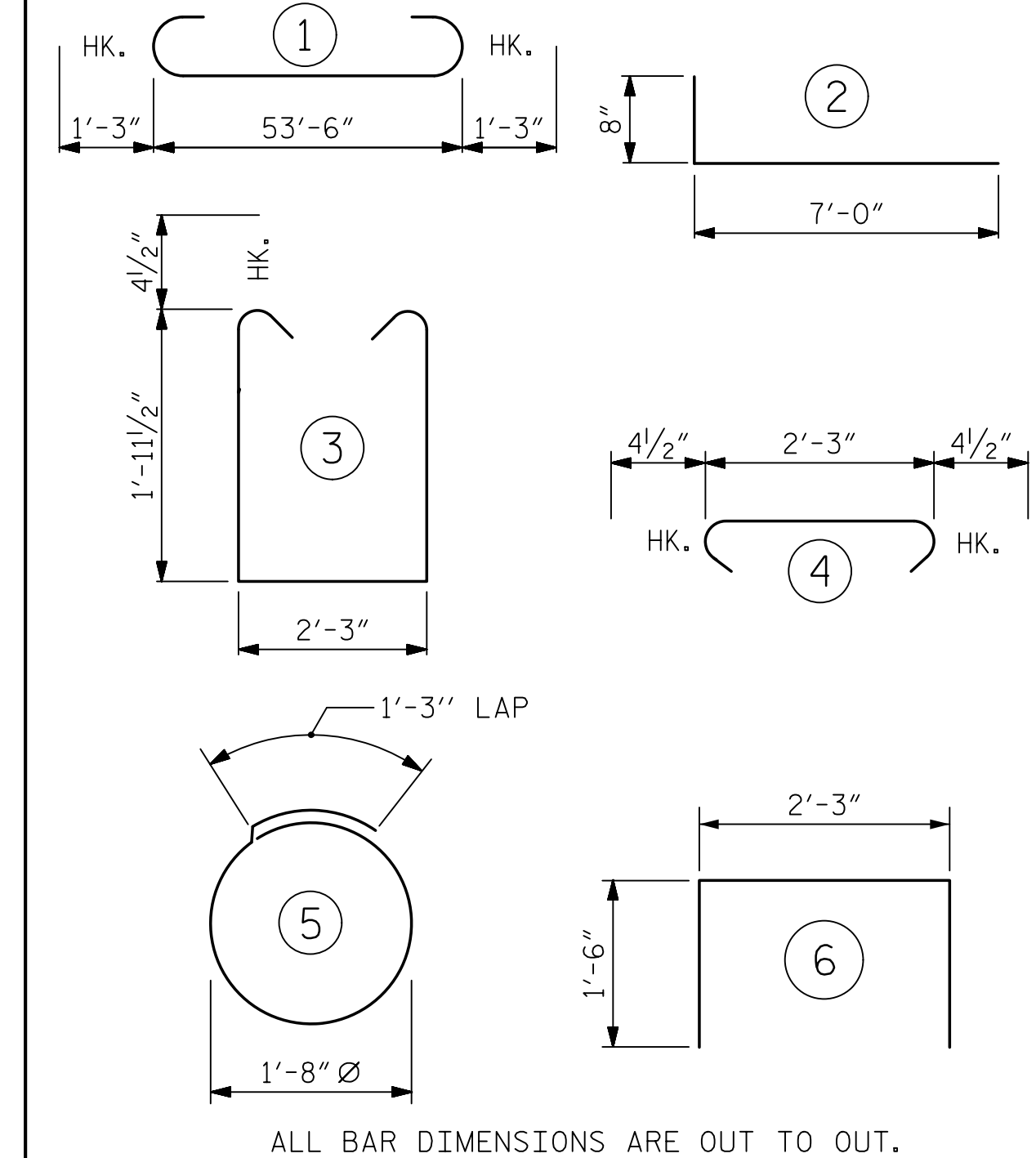
(END BENT No. 1 SHOWN, END BENT No. 2 SIMILAR BY ROTATION)



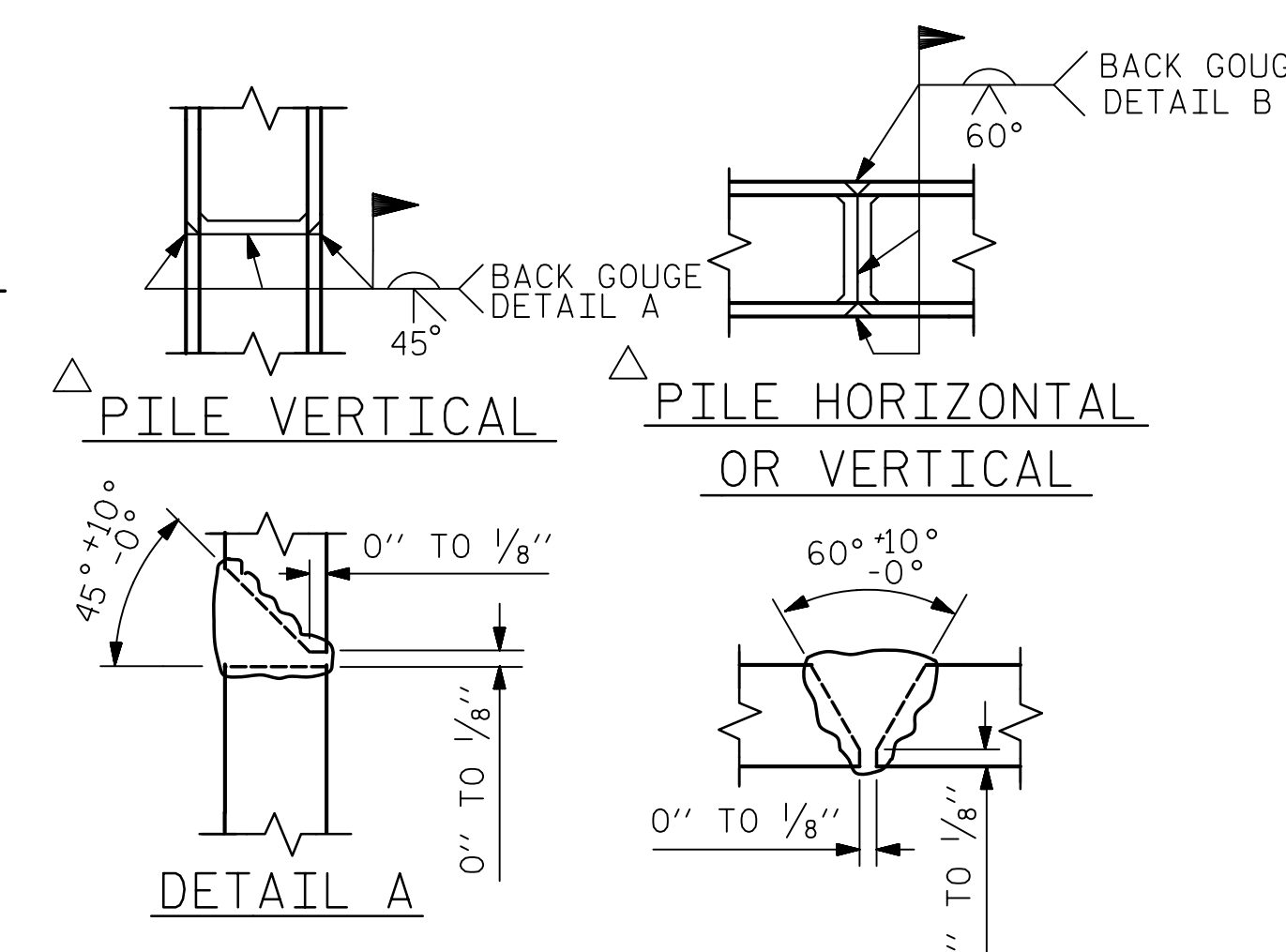
SECTION B-B

(CONCRETE COLLAR NOT SHOWN FOR CLARITY. SEE "CORROSION PROTECTION FOR STEEL PILES DETAIL.")

BILL OF MATERIAL FOR ONE END BENT					
BAR NO.	NO.	SIZE	TYPE	LENGTH	WEIGHT
*B1	8	#9		56'-0"	1523
*B2	16	#4	STR	28'-2"	301
*B3	14	#4	STR	2'-3"	21
*B4	8	#4	STR	20'-4"	109
*D1	32	#6	STR	1'-6"	72
*H1	24	#4		7'-8"	123
*K1	12	#4	STR	2'-11"	23
*S1	72	#4		6'-11"	333
*S2	72	#4		3'-0"	144
*S3	16	#4		6'-6"	69
*U1	26	#4		5'-3"	91
*V1	48	#4	STR	4'-6"	144
* EPOXY COATED REINFORCING STEEL (FOR ONE END BENT)					2953 LBS.
CLASS AA CONCRETE BREAKDOWN (FOR ONE END BENT)					
POUR #1 CAP, LOWER PART OF WINGS & COLLARS					16.6 C.Y.
POUR #2 UPPER PART OF WINGS					1.8 C.Y.
TOTAL CLASS AA CONCRETE					18.4 C.Y.



END BENT No. 1		END BENT No. 2	
NO.	EA.	NO.	EA.
HP 12 X 53 STEEL PILES		HP 12 X 53 STEEL PILES	
NO: 8		NO: 8	
STEEL PILE POINTS	EA. 8	STEEL PILE POINTS	EA. 8
PILE REDRIVES	EA. 4	PILE REDRIVES	EA. 4
LINEAR FEET	400	LINEAR FEET	360



POSITION OF PILE DURING WELDING.

PILE SPLICE DETAILS



127 W. Hargett Street
Suite 504
Raleigh, NC 27601
919-714-8670
meadhunt.com
NC License No. F-1235



127 W. Hargett Street
Suite 504
Raleigh, NC 27601
919-714-8670
meadhunt.com
NC License No. F-1235

PROJECT NO. B-4440
BRUNSWICK COUNTY
STATION: 18+90.36 -L-

REVISIONS					
NO.	BY:	DATE:	NO.	BY:	DATE:
1			3		
2			4		

SHEET NO.	
S-17	
TOTAL SHEETS	22

ASSEMBLED BY :	J.S. HOBSON	DATE :	2/13/15
CHECKED BY :	J.A. LEE	DATE :	3/2/15
DRAWN BY :	DGE 02/10	REV. 11/14	MAA/TMG
CHECKED BY :	MKT 02/10		

THESE PLANS HAVE BEEN PROPERLY EXAMINED BY THE UNDERSIGNED. I HAVE DETERMINED THAT THEY COMPLY WITH EXISTING NORTH CAROLINA CODES, AND HAVE BEEN PROPERLY ADAPTED FOR USE IN THIS AREA.

DOCUMENT NOT CONSIDERED FINAL UNLESS ALL SIGNATURES COMPLETED