

**This electronic collection of documents is provided  
for the convenience of the user  
and is Not a Certified Document –**

**The documents contained herein were originally issued  
and sealed by the individuals whose names and license  
numbers appear on each page, on the dates appearing  
with their signature on that page.**

**This file or an individual page  
shall not be considered a certified document.**

T.I.P. NO.	SHEET NO.
R-4060	UO-1

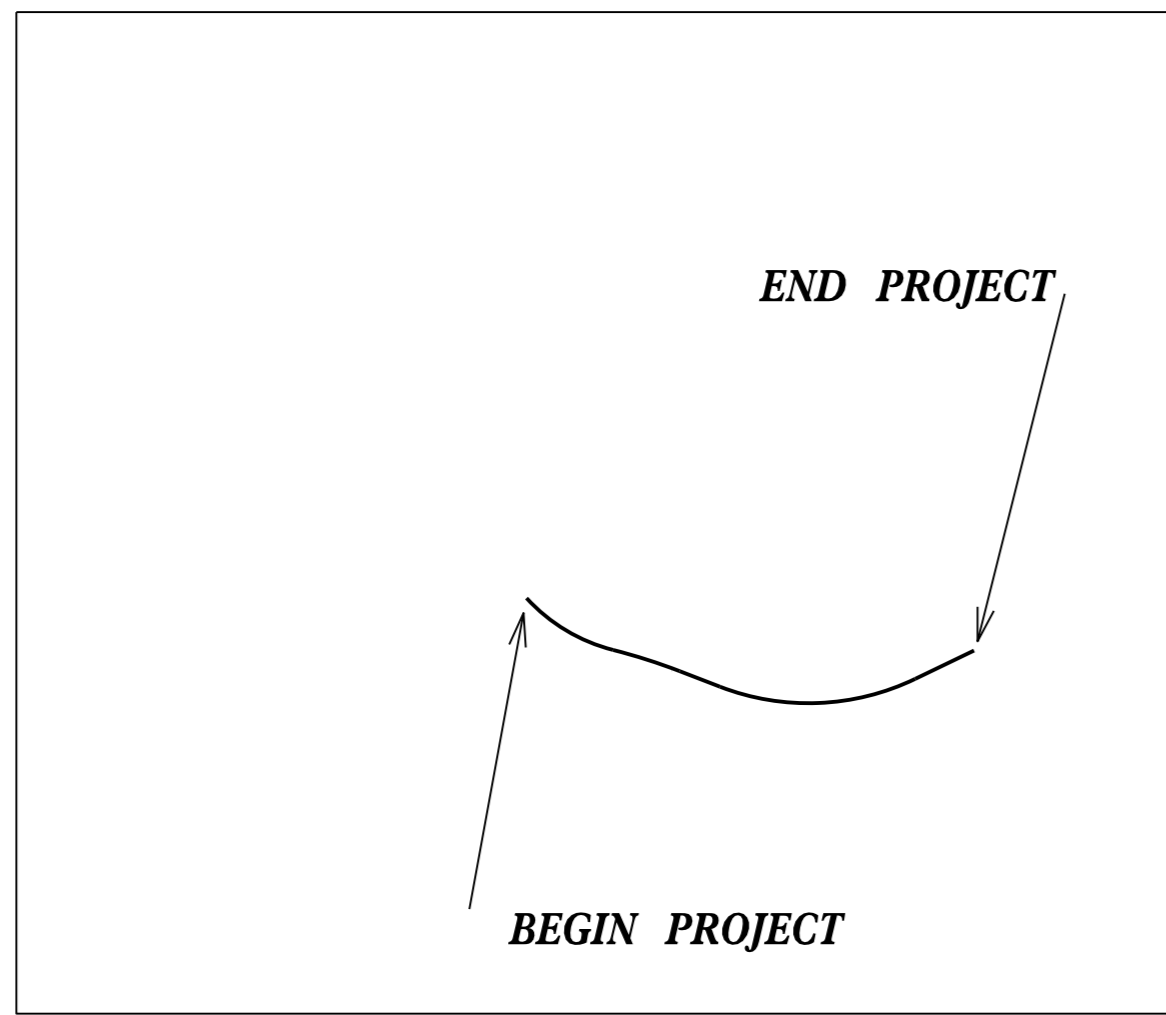
STATE OF NORTH CAROLINA  
DIVISION OF HIGHWAYS

**UTILITIES BY OTHERS PLANS  
ALEGHANY COUNTY**

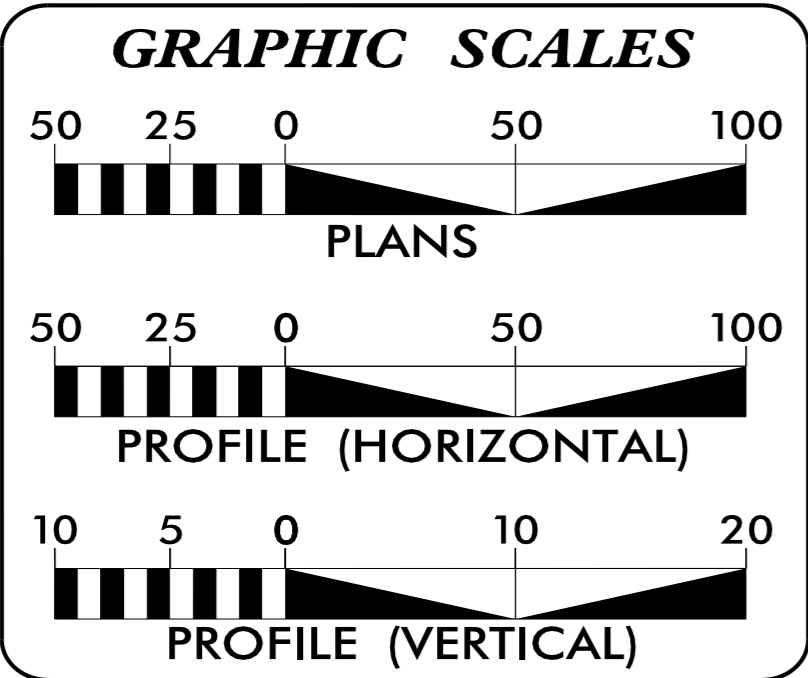
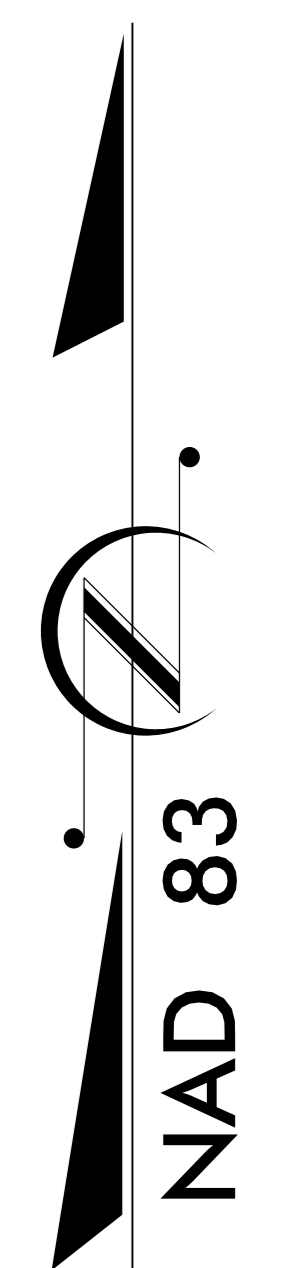
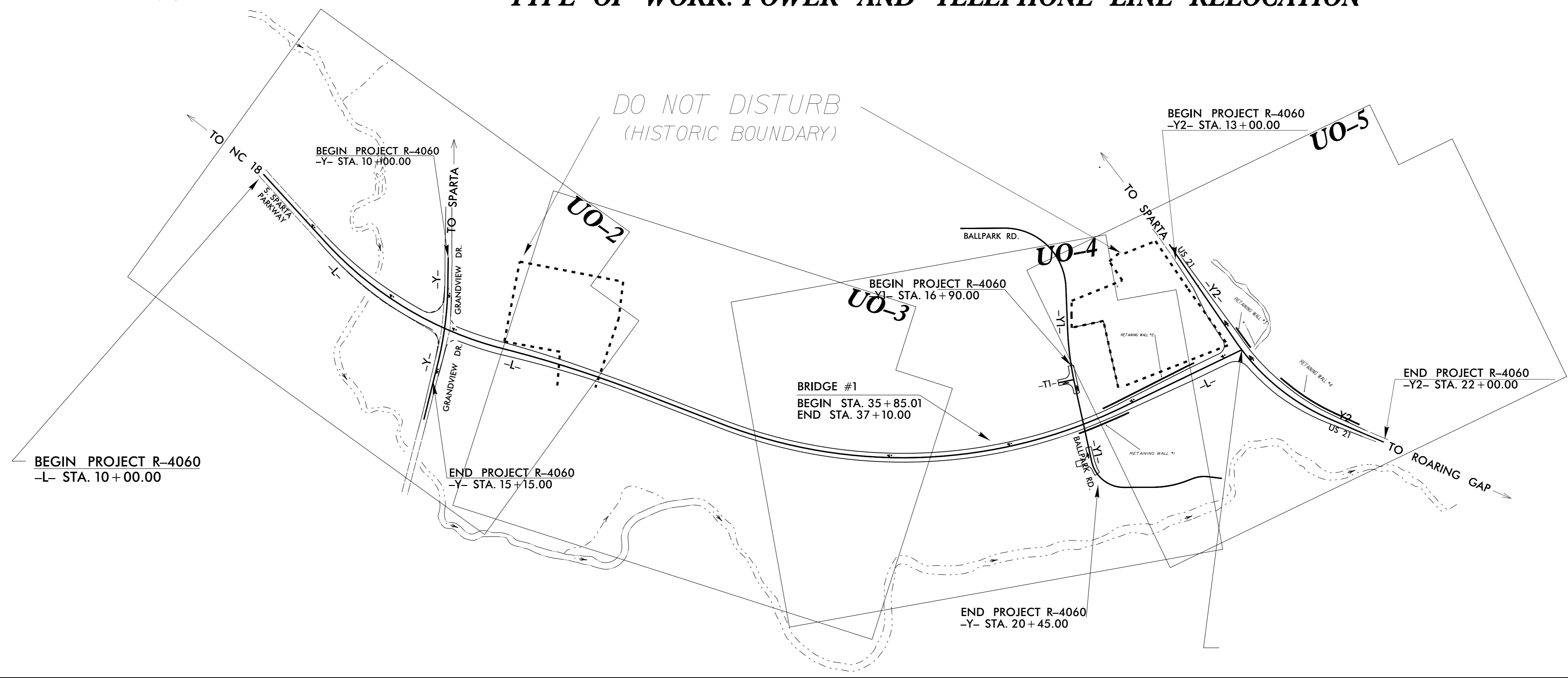
**LOCATION: SPARTA BYPASS FROM SR 1172 (GRANVILLE DR.)  
TO US 21 NEW LOCATION**

**TYPE OF WORK: POWER AND TELEPHONE LINE RELOCATION**

**TIP PROJECT: R-4060**



VICINITY MAP




**INDEX OF SHEETS**

SHEET NO.	DESCRIPTION
UO-1	TITLE SHEET
UO-2 THRU UO-5	UTILITY BY OTHERS PLAN SHEETS

**UTILITY OWNERS ON PROJECT**

(A) BLUE RIDGE	EMC POWER
(B) SKYLINE	TELEPHONE / CABLE TV



PREPARED IN THE OFFICE OF:  
**DIVISION OF HIGHWAYS  
UTILITIES UNIT  
UTILITIES ENGINEERING**

1555 MAIL SERVICES CENTER  
RALEIGH, NC 27699-1555  
PHONE (919) 707-6690  
FAX (919) 250-4151

<b>Roger Worthington, P.E.</b>	UTILITIES SECTION ENGINEER
<b>Carl Barclay, P.E.</b>	UTILITIES SQUAD LEADER PROJECT ENGINEER
<b>Ali Kouchehi, P.E.</b>	UTILITIES PROJECT DESIGNER

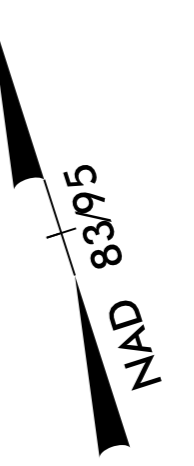
02-JUN-2016 09:43 R:\Utilities\Engineering\UB0\Proj\R-4060\_ddc\_tsh\_UO1.dgn \$\$\$\$USERNAME\$\$\$



### UTILITIES BY OTHERS

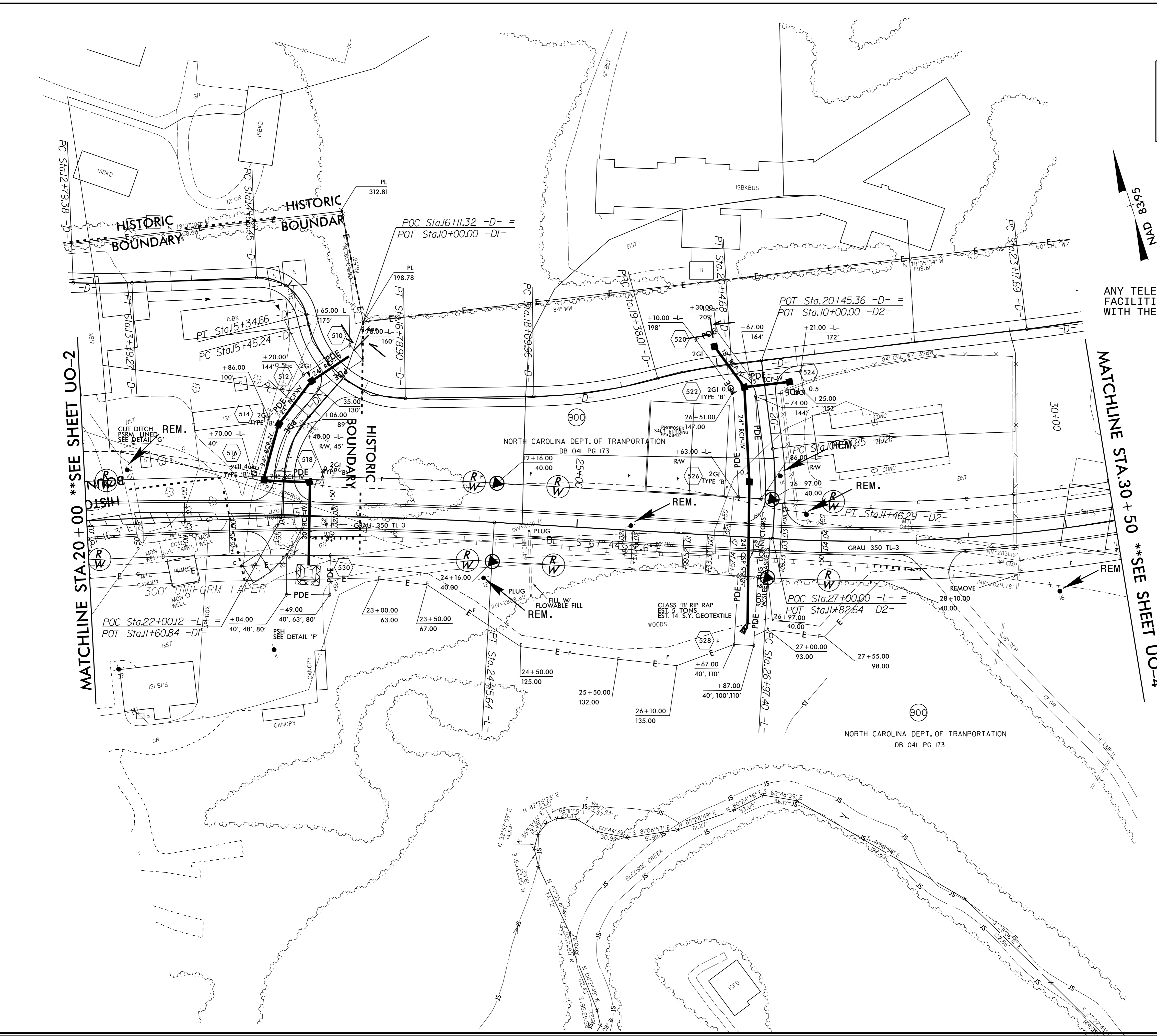
NOTE:  
 ALL PROPOSED UTILITY WORK SHOWN ON THIS SHEET WILL BE DONE BY OTHERS. NO PAYMENT WILL BE MADE TO THE CONTRACTOR FOR PROPOSED UTILITY WORK SHOWN ON THIS SHEET.

ANY TELEPHONE LINES GOING TO NC DOT FACILITIES ARE BEING RELOCATED IN COORDINATION WITH THE ALLEGHANY DOT MAINTENANCE OFFICE.



MATCHLINE STA.20+00 \*\*SEE SHEET UO-2

MATCHLINE STA.30+50 \*\*SEE SHEET UO-4



5/14/99

02 JUN 2016 09:49 U:\01\Proj\psh\_sheets\05\_U03.dgn

### UTILITIES BY OTHERS

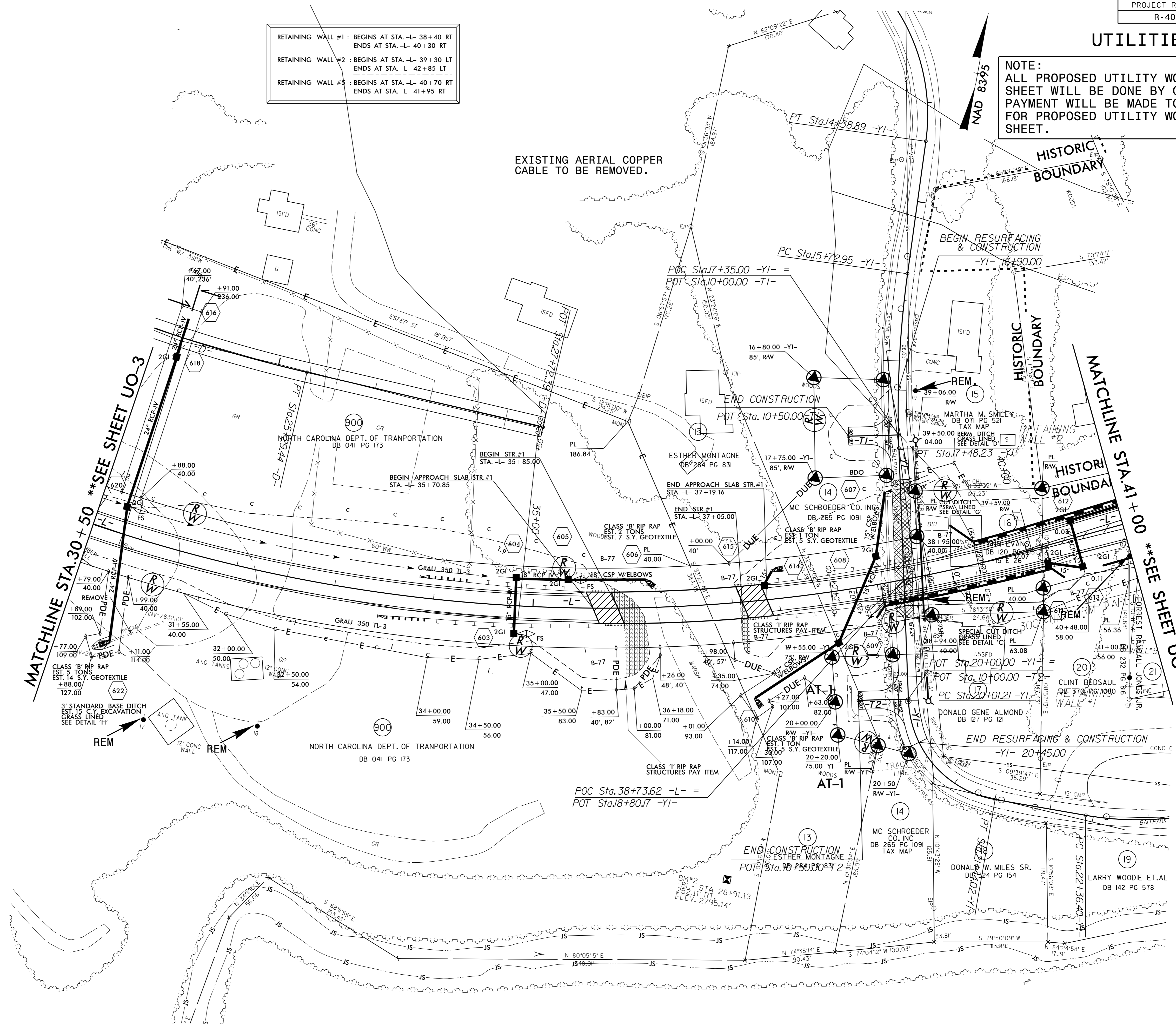
NOTE:  
ALL PROPOSED UTILITY WORK SHOWN ON THIS SHEET WILL BE DONE BY OTHERS. NO PAYMENT WILL BE MADE TO THE CONTRACTOR FOR PROPOSED UTILITY WORK SHOWN ON THIS SHEET.

RETAINING WALL #1 : BEGINS AT STA. -L- 38+40 RT  
ENDS AT STA. -L- 40+30 RT  
RETAINING WALL #2 : BEGINS AT STA. -L- 39+30 LT  
ENDS AT STA. -L- 42+85 LT  
RETAINING WALL #5 : BEGINS AT STA. -L- 40+70 RT  
ENDS AT STA. -L- 41+95 RT

EXISTING AERIAL COPPER CABLE TO BE REMOVED.

MATCHLINE STA.30+50 \*\*SEE SHEET UO-3

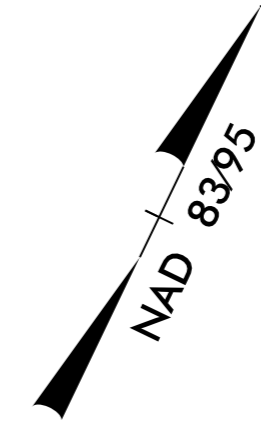
MATCHLINE STA.41+00 \*\*SEE SHEET UO-5



5/14/99  
 02-JUN-2016 09:52 D:\0\p\proj\sh-sheet\06\_U04.dgn  
 Nutt:11

UTILITIES BY OTHERS

NOTE:  
 ALL PROPOSED UTILITY WORK SHOWN ON THIS SHEET WILL BE DONE BY OTHERS. NO PAYMENT WILL BE MADE TO THE CONTRACTOR FOR PROPOSED UTILITY WORK SHOWN ON THIS SHEET.

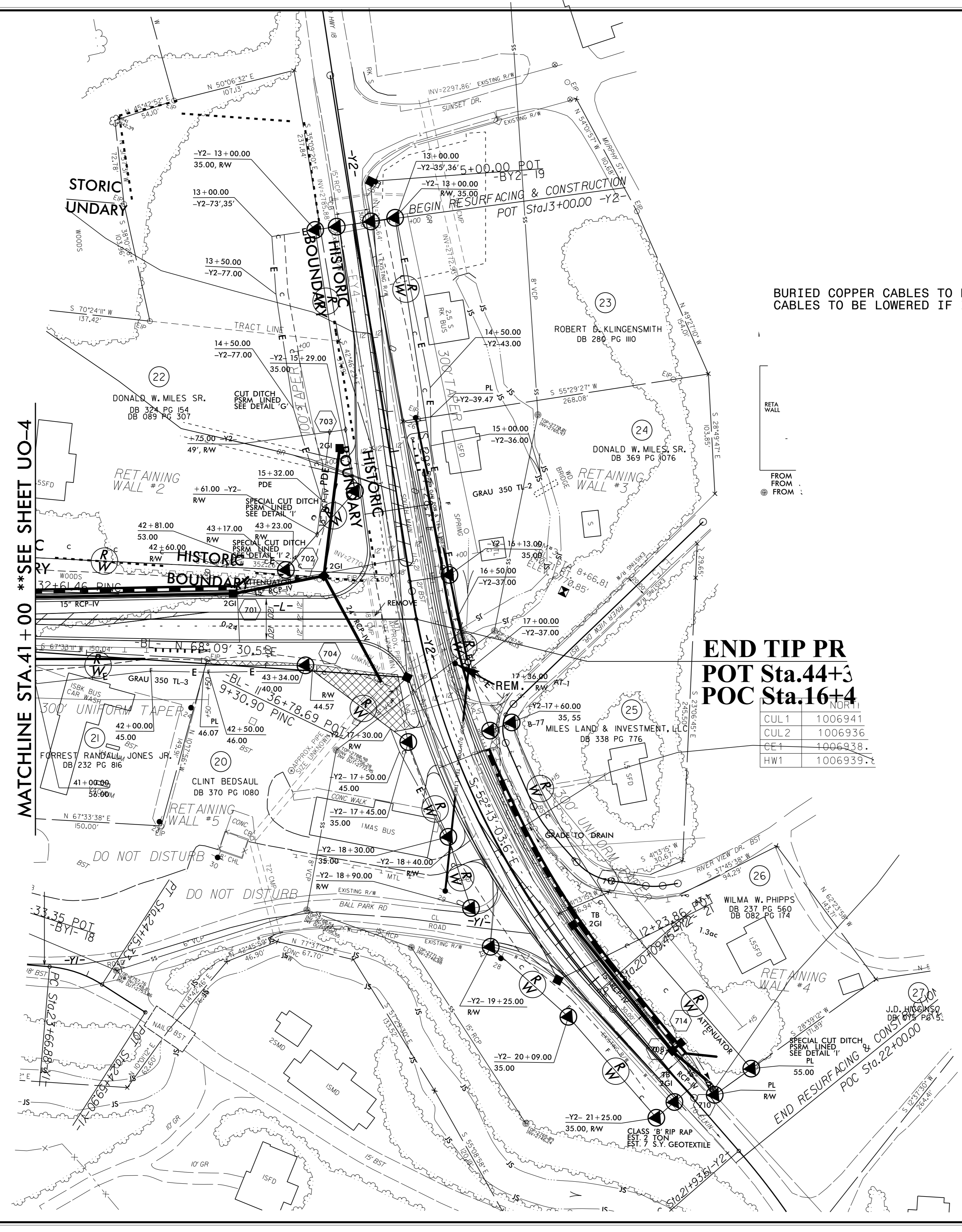


BURIED COPPER CABLES TO REMAIN.  
 CABLES TO BE LOWERED IF IN CONFLICT.

RETAINING WALL #2	: BEGINS AT STA. -L- 39+30 LT
	ENDS AT STA. -L- 42+85 LT
RETAINING WALL #3	: BEGINS AT STA. -Y2- 15+45 LT
	ENDS AT STA. -Y2- 16+95 LT
RETAINING WALL #4	: BEGINS AT STA. -Y2- 17+75 LT
	ENDS AT STA. -Y2- 21+20 LT
RETAINING WALL #5	: BEGINS AT STA. -L- 40+70 RT
	ENDS AT STA. -L- 41+95 RT

**END TIP PR**  
**POT Sta.44+3**  
**POC Sta.16+4**

CUL1	1006941
CUL2	1006936
CE1	1006938.
HW1	1006939.



MATCHLINE STA. 41+00 \*\*SEE SHEET UO-4

8/12/17/17

02-JUN-2016 10:02:00 psh...sheet07\_U05.dgn