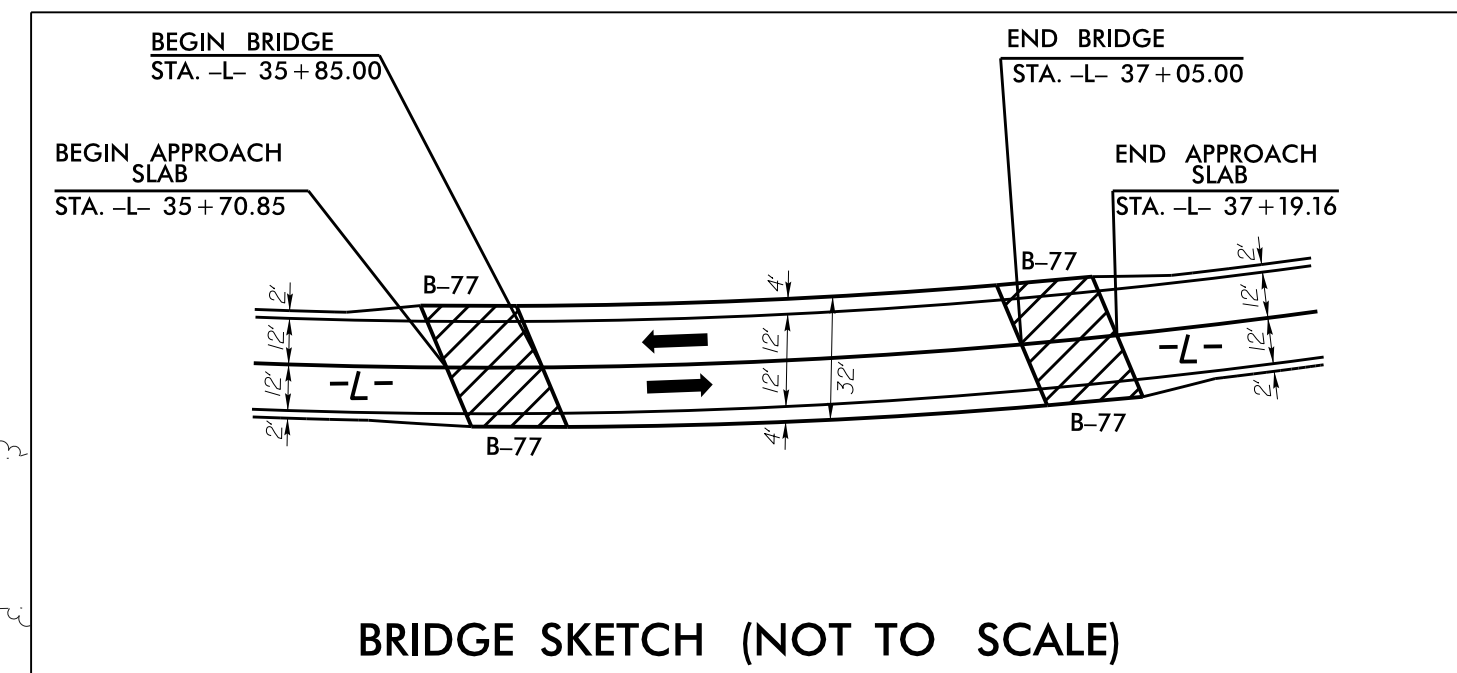


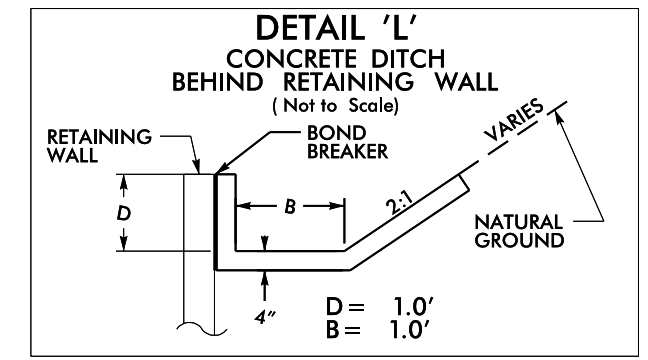
-Y1-		
PI Sta 16+60.81	PI Sta 20+86.13	PI Sta 22+90.78
$\Delta = 10^{\circ} 02' 34.3" (LT)$	$\Delta = 77^{\circ} 55' 39.9" (LT)$	$\Delta = 20^{\circ} 33' 03.6" (LT)$
$D = 5^{\circ} 43' 46.5"$	$D = 54^{\circ} 34' 02.7"$	$D = 19^{\circ} 05' 54.9"$
$L = 175.28'$	$L = 142.81'$	$L = 107.60'$
$T = 87.87'$	$T = 84.92'$	$T = 54.39'$
$R = 1,000.00'$	$R = 105.00'$	$R = 300.00'$
SE = EXIST	SE = EXIST	SE = EXIST

-L-		-D-	
PI Sta 33+90.26	PI Sta 24+23.74		
$\Delta = 46^{\circ} 49' 43.7" (LT)$	$\Delta = 08^{\circ} 05' 17.3" (LT)$		
$D = 3^{\circ} 34' 51.6"$	$D = 3^{\circ} 49' 11.0"$		
$L = 1,307.71'$	$L = 211.75'$		
$T = 692.86'$	$T = 106.05'$		
$R = 1,600.00'$	$R = 1,500.00'$		
SE = .04	SE = .02		
RUNOFF=48.4'			
PT Sta.40+05.11			
N 64°16'01.0" E			

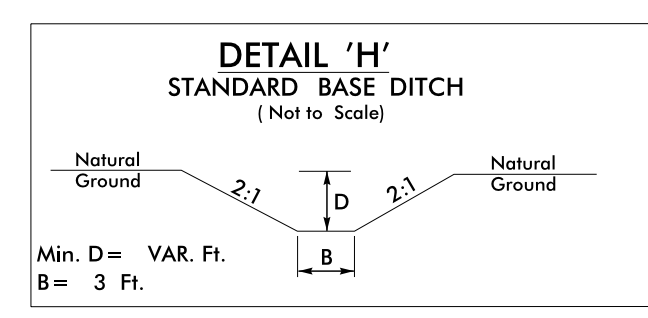


SITE GRADING DETAIL PROPOSED CONTOURS

- RETAINING WALL #1 : BEGINS AT STA. -L- 38+40 RT
ENDS AT STA. -L- 40+30 RT
- RETAINING WALL #2 : BEGINS AT STA. -L- 39+30 LT
ENDS AT STA. -L- 42+85 LT
- RETAINING WALL #5 : BEGINS AT STA. -L- 40+70 RT
ENDS AT STA. -L- 41+95 RT

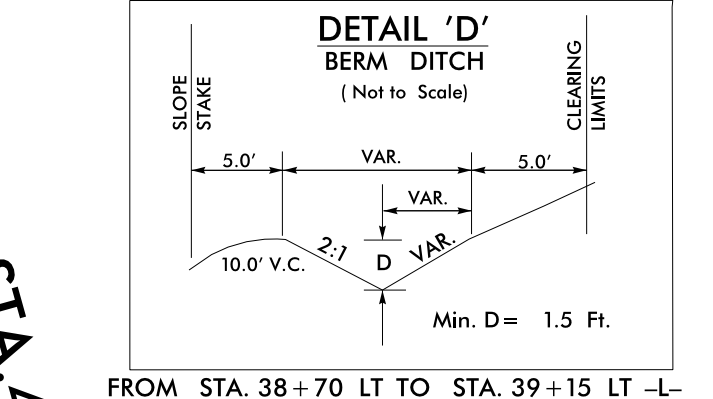
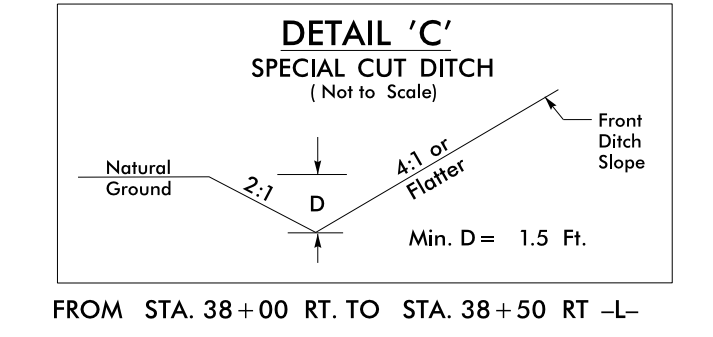
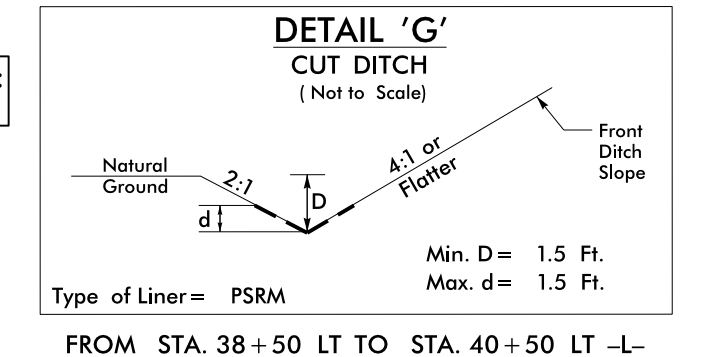
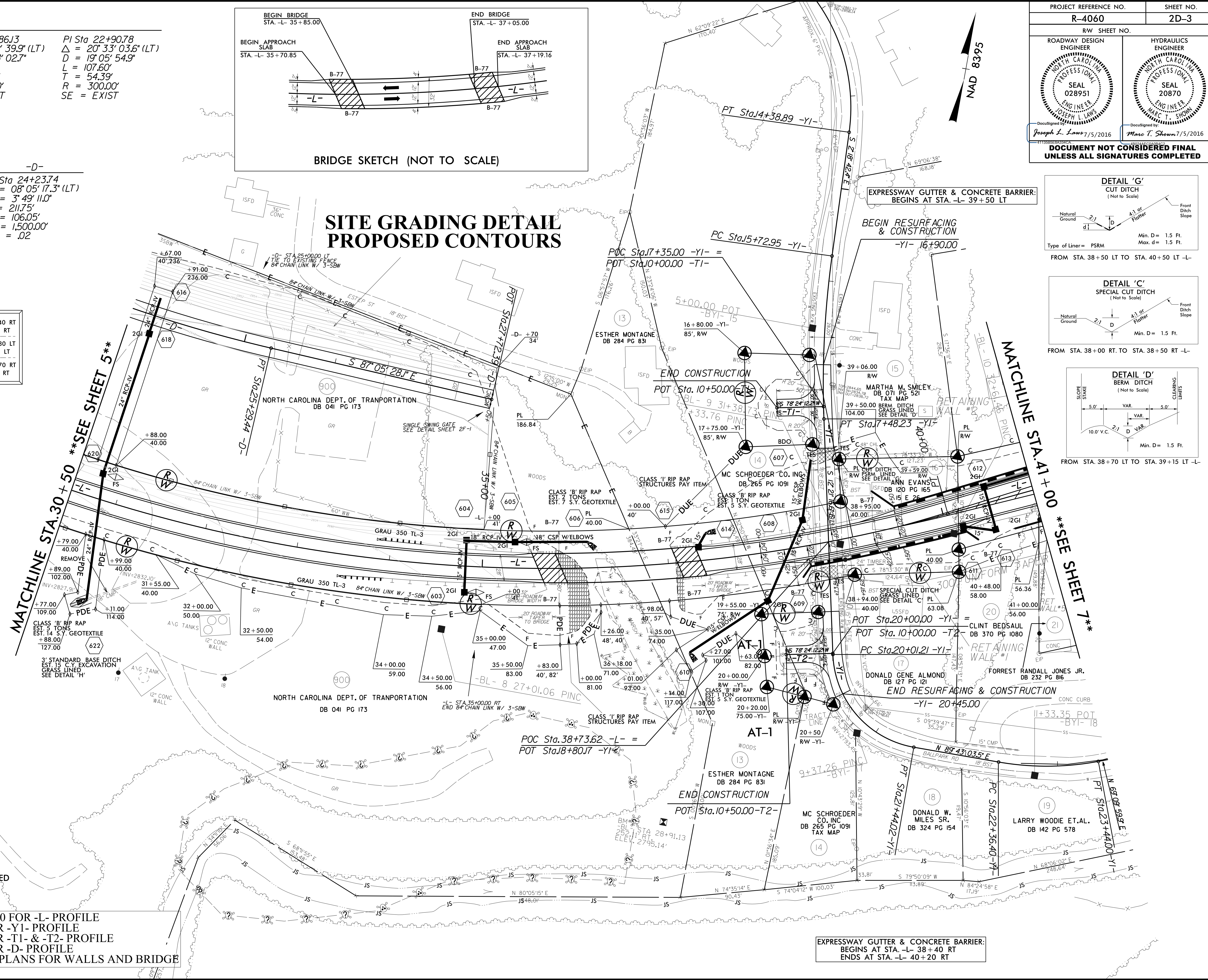


FROM STA.38+50 TO STA.40+20 -L- RT.
FROM STA.39+30 TO STA.42+85 -L- LT.
FROM STA.40+70 TO STA.41+95 -L- RT.



 PAVEMENT TO BE REMOVED

- NOTE :
- (1) SEE SHEETS 9 & 10 FOR -L- PROFILE
 - (2) SEE SHEET 12 FOR -Y1- PROFILE
 - (3) SEE SHEET 13 FOR -T1- & -T2- PROFILE
 - (4) SEE SHEET 15 FOR -D- PROFILE
 - (5) SEE STRUCTURE PLANS FOR WALLS AND BRIDGE



8/17/99
9/5/2016 09:27 - Revised\p\shome\ts\psh_shee\2D-3 - SITE DETAIL.dgn