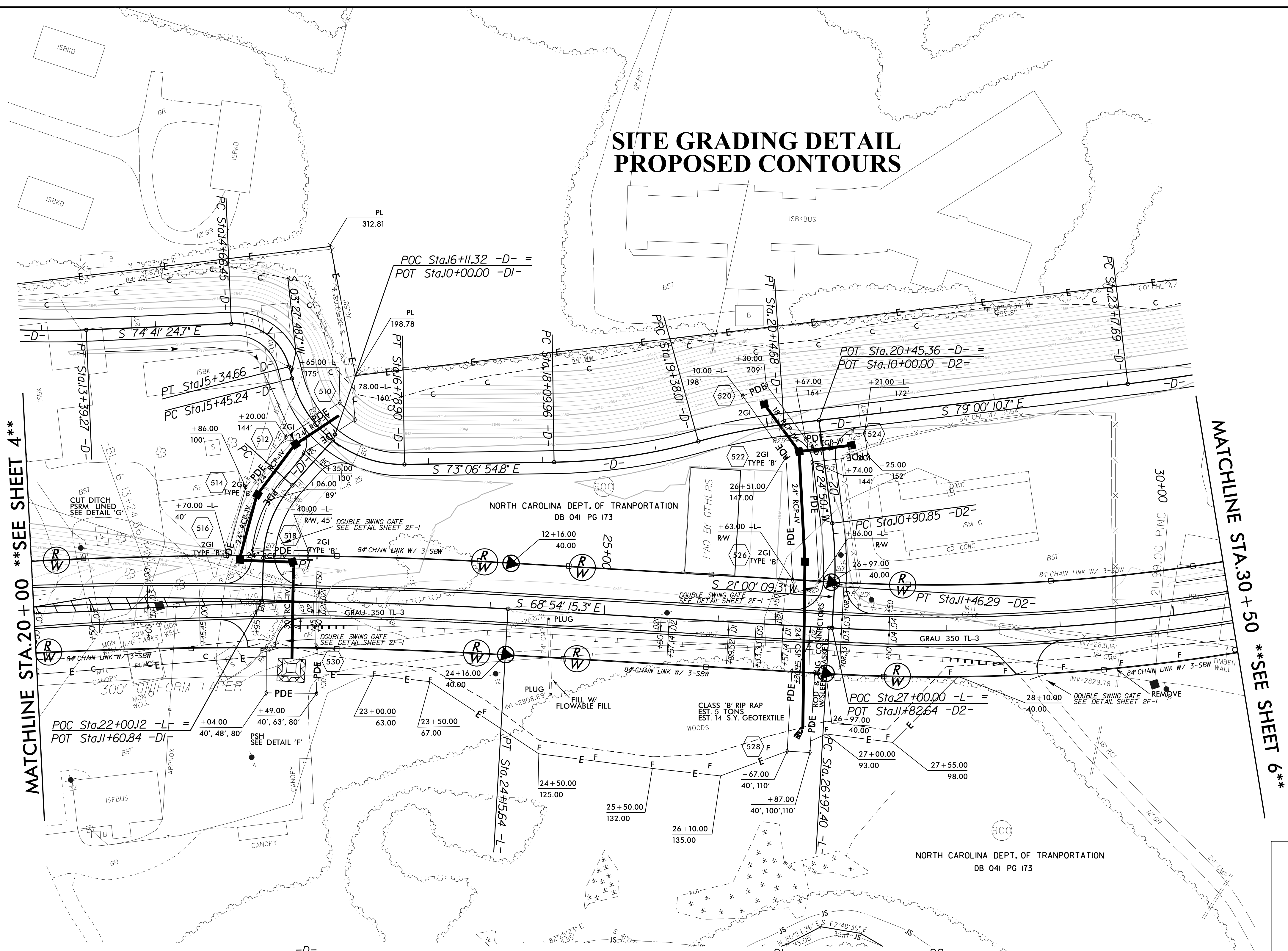
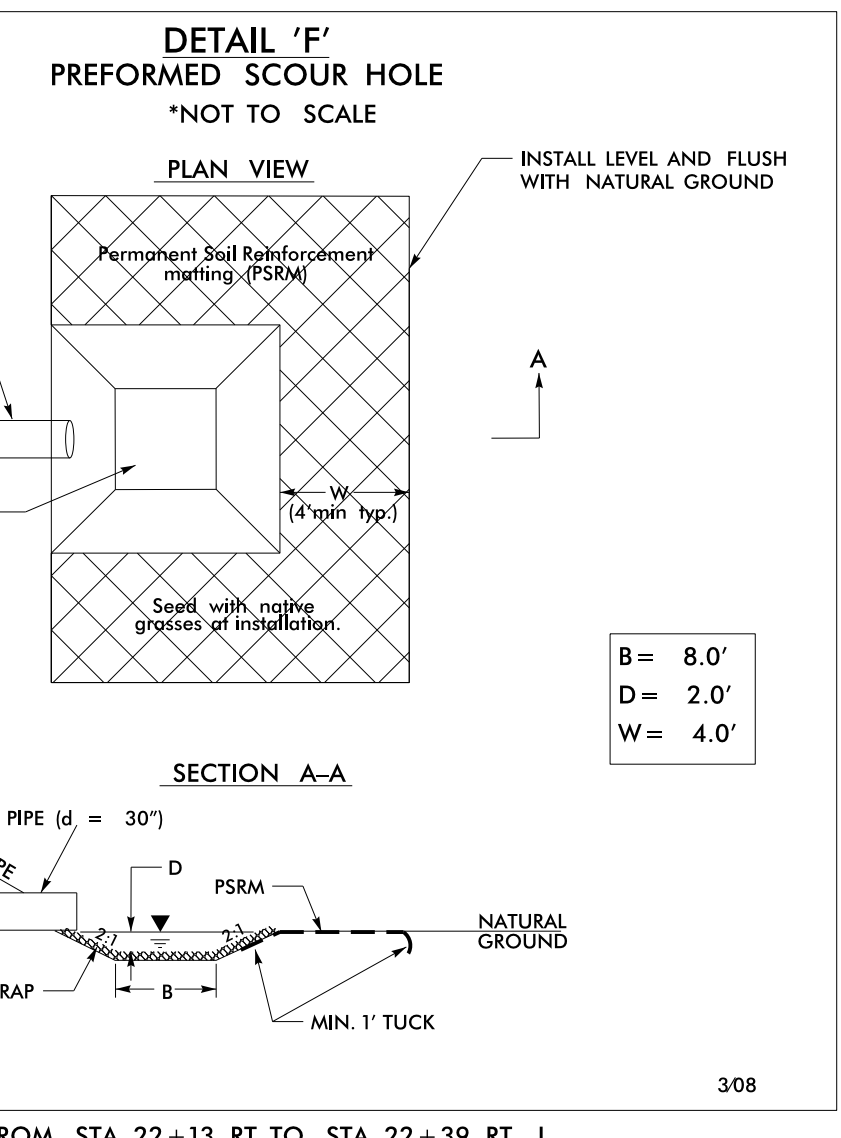
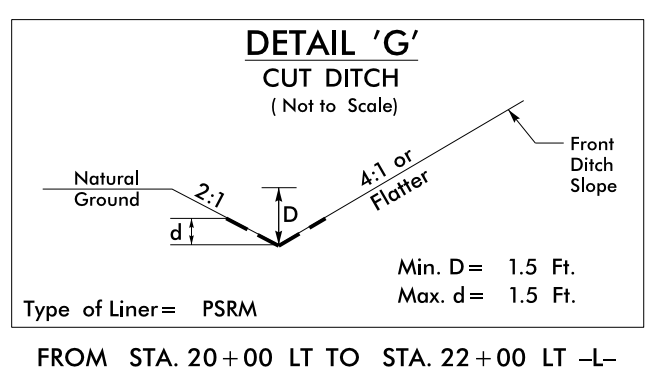


SITE GRADING DETAIL PROPOSED CONTOURS



MATCHLINE STA. 20 + 00 **SEE SHEET 4**

MATCHLINE STA. 30 + 50 **SEE SHEET 6**



| | | | | | |
|---|---|--|--|--|--|
| PI Sta 13+09.34 Δ = 4° 54' 08.9" (LT) D = 8' 11" 06.4" L = 59.89' T = 29.97' R = 700.00' SE = .02 | PI Sta 15+07.05 Δ = 78° 09' 13.4" (RT) D = 114' 35" 29.6" L = 68.20' T = 40.60' R = 50.00' SE = .02 | PI Sta 16+24.19 Δ = 76° 34' 43.5" (LT) D = 57' 17" 44.8" L = 133.66' T = 78.95' R = 100.00' SE = .02 | PI Sta 18+74.34 Δ = 14° 40' 23.5" (LT) D = 11' 27" 33.0" L = 128.05' T = 64.38' R = 500.00' SE = .02 | PI Sta 19+76.42 Δ = 8° 47' 07.5" (RT) D = 11' 27" 33.0" L = 76.67' T = 38.41' R = 500.00' SE = .02 | PI Sta 24+23.74 Δ = 08° 05' 17.3" (LT) D = 3' 49" 11.0" L = 211.75' T = 106.05' R = 1,500.00' SE = .02 |
|---|---|--|--|--|--|

| | |
|---|--|
| POT Sta 10+00.00 S 59° 33' 17.4" W PC Sta 10+52.89 PI Sta 10+89.36 Δ = 40° 03' 59.6" (LT) D = 57' 17" 44.8" L = 69.93' T = 36.46' R = 100.00' PT Sta 11+22.82 S 19° 29' 17.8" W POT Sta 11+60.84 | PI Sta 11+18.65 Δ = 10° 35' 19.2" (RT) D = 3' 49" 54.9" L = 55.44' T = 27.80' R = 300.00' |
|---|--|

NOTE : (1) SEE SHEETS 8 & 9 FOR -L- PROFILE
(2) SEE SHEET 15 FOR -D- PROFILE
(3) SEE SHEET 16 FOR -D1- PROFILE
(4) SEE SHEET 17 FOR -D2- PROFILE

| | | |
|-----|--|--|
| -L- | PI Sta 21+88.37 Δ = 6° 49' 33.6" (RT) D = 1' 30" 00.0" L = 455.07' T = 227.80' R = 3,819.72' SE = .04 RUNOFF=100' | PI Sta 33+90.26 Δ = 46° 49' 43.7" (LT) D = 3' 34" 51.6" L = 1,307.71' T = 692.86' R = 1,600.00' SE = .04 RUNOFF=48.4' |
|-----|--|--|

8/17/99
9/5/2016 09:26
3:58:51 PM
Revised\p\ansheets\sh_she2D-2 - SITE DETAIL.dgn