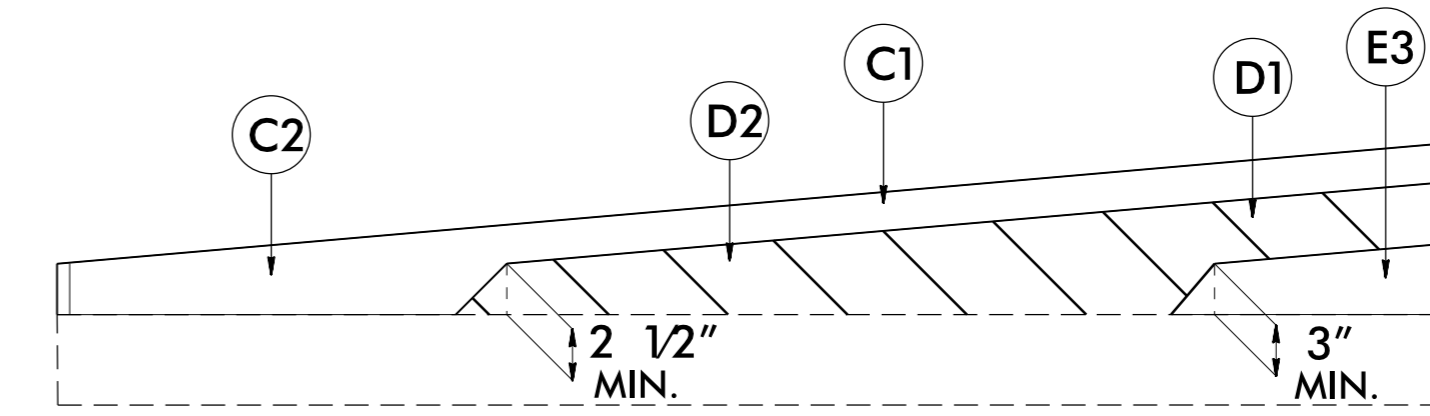
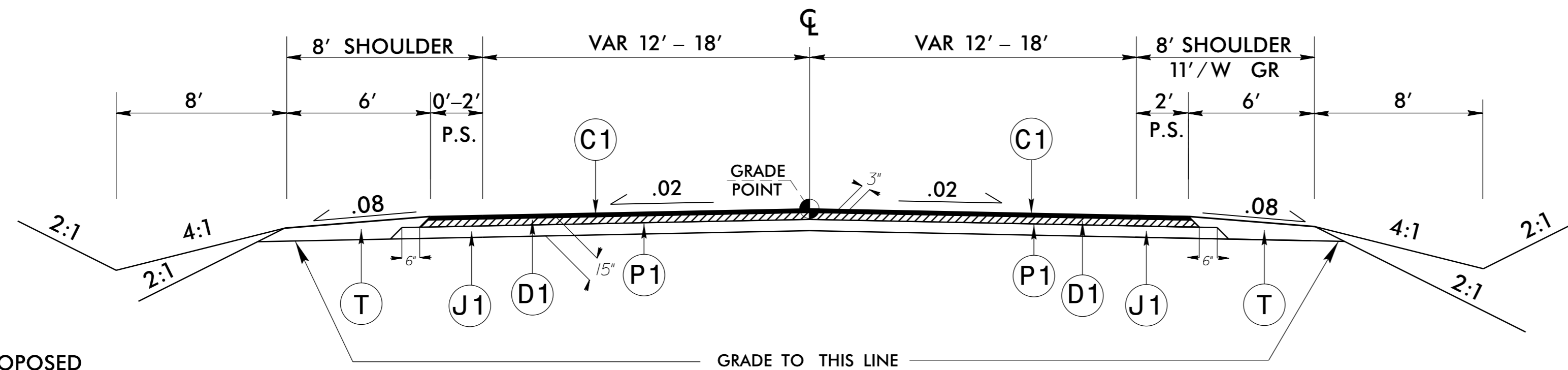


-L- STA. 12+00.00 TO STA. 16+50.00 (RESURFACE)
 -Y- STA. 10+00.00 TO STA. 10+70.00 (RESURFACE)
 -Y- STA. 13+75.00 TO STA. 14+50.00 (RESURFACE)
 -Y1- STA. 16+90.00 TO STA. 17+80.00 (RESURFACE)
 -Y1- STA. 19+55.00 TO STA. 20+45.00 (RESURFACE)
 -Y2- STA. 21+25.00 TO STA. 22+00.00 (RESURFACE)



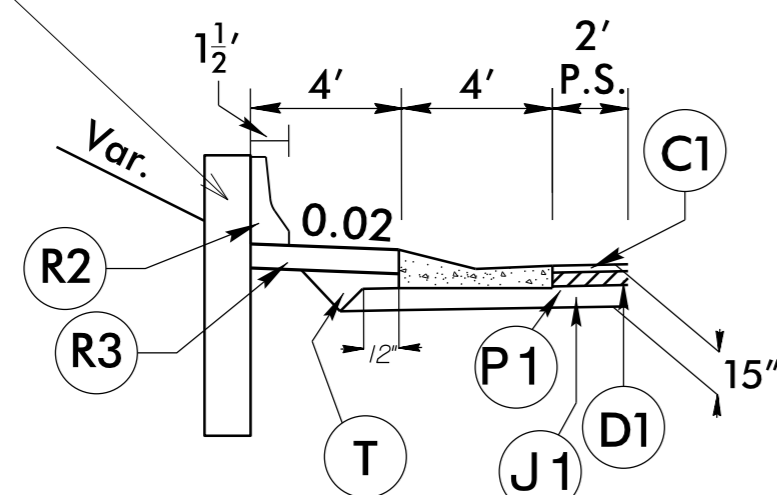
Wedging Detail For Resurfacing



TYPICAL SECTION NO. 2

**L- STA. 19+50.00 TO STA. 22+50.00
 *L- STA. 39+50.00 TO STA. 42+50.00

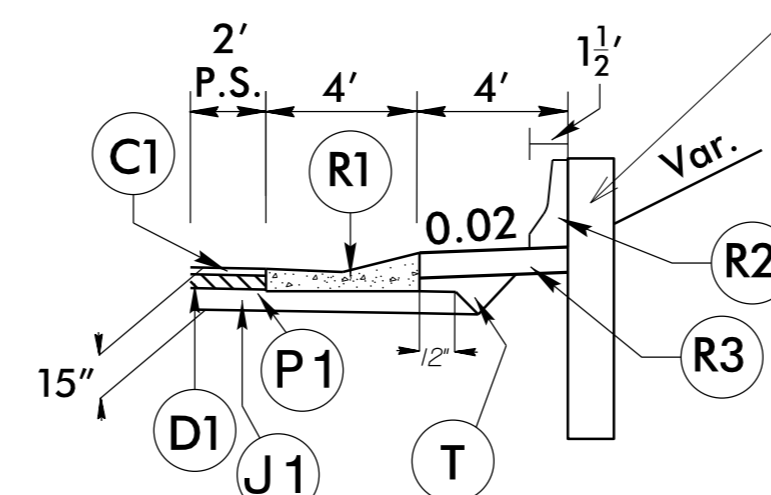
PROPOSED RETAINING WALL #2



DETAIL NO. 2

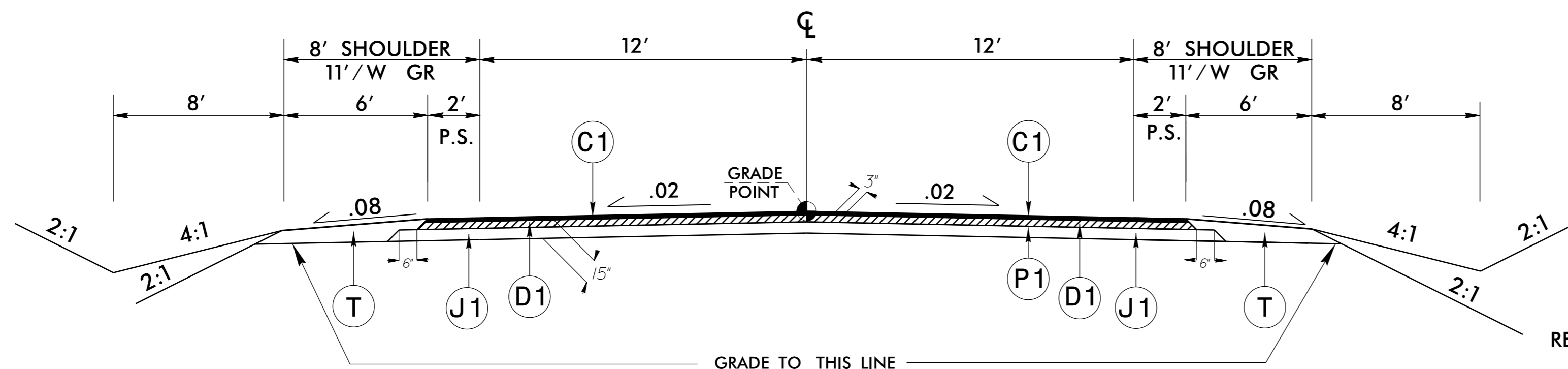
*L- STA. 39+50.00 LT. TO STA. 42+50.00 LT.

PROPOSED RETAINING WALL #1



DETAIL NO. 1

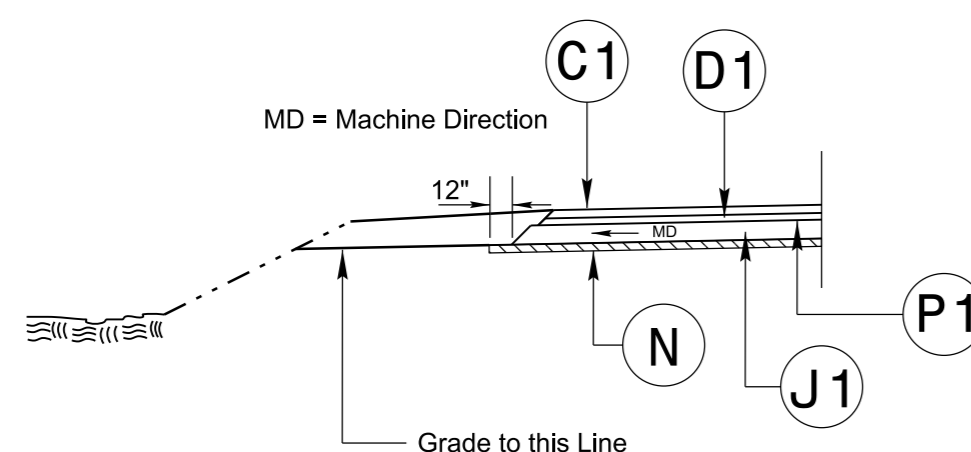
*L- STA. 39+50.00 RT. TO STA. 40+20.00 RT.



TYPICAL SECTION NO. 3

**L- STA. 22+50.00 TO STA. 35+85.00
 *L- STA. 37+05.00 TO STA. 39+50.00

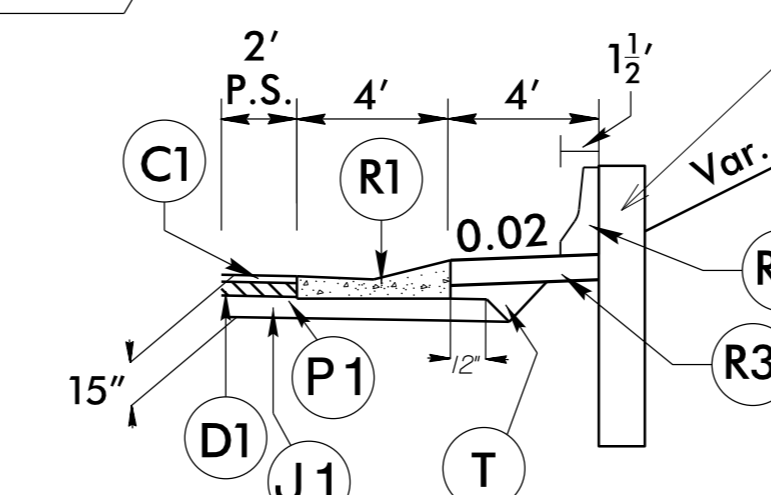
MD = Machine Direction



DETAIL NO. 5

**L- STA. 22+00.00 TO STA. 28+00.00

PROPOSED RETAINING WALL #1



DETAIL NO. 1

*L- STA. 38+50.00 RT. TO STA. 39+50.00 RT.

PAVEMENT SCHEDULE	
C1	PROP. APPROX. 3" ASPHALT CONCRETE SURFACE COURSE, TYPE S9.5B, AT AN AVERAGE RATE OF 168 LBS. PER SQ. YD. IN EACH OF TWO LAYERS.
C2	PROP. VAR. DEPTH ASPHALT CONCRETE SURFACE COURSE, TYPE S9.5B, AT AN AVERAGE RATE OF 112 LBS. PER SQ. YD. PER 1" DEPTH. TO BE PLACED IN LAYERS NOT TO EXCEED 2" IN DEPTH.
D1	PROP. APPROX. 4" ASPHALT CONCRETE INTERMEDIATE COURSE, TYPE I19.0B, AT AN AVERAGE RATE OF 456 LBS. PER SQ. YD.
D2	PROP. VAR. DEPTH ASPHALT CONCRETE INTERMEDIATE COURSE, TYPE I19.0B, AT AN AVERAGE RATE OF 114 LBS. PER SQ. YD. PER 1" DEPTH, TO BE PLACED IN LAYERS NOT LESS THAN 2 1/2" IN DEPTH OR GREATER THAN 4" IN DEPTH.
E1	PROP. APPROX. 4" ASPHALT CONCRETE BASE COURSE, TYPE B25.0B, AT AN AVERAGE RATE OF 456 LBS. PER SQ. YD.
E2	PROP. APPROX. 5" ASPHALT CONCRETE BASE COURSE, TYPE B25.0B, AT AN AVERAGE RATE OF 570 LBS. PER SQ. YD.
E3	PROP. VAR. DEPTH ASPHALT CONCRETE BASE COURSE, TYPE B25.0B, AT AN AVERAGE RATE OF 114 LBS. PER SQ. YD. PER 1" DEPTH, TO BE PLACED IN LAYERS NOT LESS THAN 3" IN DEPTH OR GREATER THAN 5 1/2" IN DEPTH.
N	GEOTEXTILE FOR PAVEMENT STABILIZATION
R1	4' EXPRESSWAY GUTTER
R2	SINGLE FACED CONCRETE BARRIER
R3	4' WIDE X 6" DEEP CONCRETE PAD
J1	PROP. 8" AGGREGATE BASE COURSE.
P1	PRIME COAT AT THE RATE OF .35 GAL PER SQ. YARD.
T	EARTH MATERIAL.
U	EXISTING PAVEMENT
W	VARIABLE DEPTH ASPHALT PAVING (SEE WEDGING DETAIL)

NOTE: PAVEMENT EDGE SLOPES ARE 1:1 UNLESS SHOWN OTHERWISE.