

REFERENCE: B-5121

PROJECT: 42263

STATE OF NORTH CAROLINA
DEPARTMENT OF TRANSPORTATION
DIVISION OF HIGHWAYS
GEOTECHNICAL ENGINEERING UNIT

STATE	STATE PROJECT REFERENCE NO.	SHEET NO.	TOTAL SHEETS
N.C.	B-5121	1	4

CONTENTS

SHEET NO.	DESCRIPTION
1	TITLE SHEET
2	LEGEND
3	SITE PLAN
4	WALL ENVELOPES

STRUCTURE
SUBSURFACE INVESTIGATION

COUNTY WAKE

PROJECT DESCRIPTION REPLACE BRIDGE NO. 227 ON CAPITAL BLVD. OVER PEACE ST. AND REPLACE BRIDGE NO. 213 ON WADE AVE. OVER CAPITAL BLVD.

SITE DESCRIPTION MSE WALL NO. 4 AT -FLYOVER- STA. 18+81, 27' RT AND MSE WALL NO. 5 AT -FLYOVER- STA. 22+16, 27' RT

CAUTION NOTICE

THE SUBSURFACE INFORMATION AND THE SUBSURFACE INVESTIGATION ON WHICH IT IS BASED WERE MADE FOR THE PURPOSE OF STUDY, PLANNING AND DESIGN, AND NOT FOR CONSTRUCTION OR PAY PURPOSES. THE VARIOUS FIELD BORING LOGS, ROCK CORES AND SOIL TEST DATA AVAILABLE MAY BE REVIEWED OR INSPECTED IN RALEIGH BY CONTACTING THE N. C. DEPARTMENT OF TRANSPORTATION, GEOTECHNICAL ENGINEERING UNIT AT 1919 707-6850. THE SUBSURFACE PLANS AND REPORTS, FIELD BORING LOGS, ROCK CORES AND SOIL TEST DATA ARE NOT PART OF THE CONTRACT.

GENERAL SOIL AND ROCK STRATA DESCRIPTIONS AND INDICATED BOUNDARIES ARE BASED ON A GEOTECHNICAL INTERPRETATION OF ALL AVAILABLE SUBSURFACE DATA AND MAY NOT NECESSARILY REFLECT THE ACTUAL SUBSURFACE CONDITIONS BETWEEN BORINGS OR BETWEEN SAMPLED STRATA WITHIN THE BOREHOLE. THE LABORATORY SAMPLE DATA AND THE IN SITU (IN-PLACE) TEST DATA CAN BE RELIED ON ONLY TO THE DEGREE OF RELIABILITY INHERENT IN THE STANDARD TEST METHOD. THE OBSERVED WATER LEVELS OR SOIL MOISTURE CONDITIONS INDICATED IN THE SUBSURFACE INVESTIGATIONS ARE AS RECORDED AT THE TIME OF THE INVESTIGATION. THESE WATER LEVELS OR SOIL MOISTURE CONDITIONS MAY VARY CONSIDERABLY WITH TIME ACCORDING TO CLIMATIC CONDITIONS INCLUDING TEMPERATURES, PRECIPITATION AND WIND, AS WELL AS OTHER NON-CLIMATIC FACTORS.

THE BIDDER OR CONTRACTOR IS CAUTIONED THAT DETAILS SHOWN ON THE SUBSURFACE PLANS ARE PRELIMINARY ONLY AND IN MANY CASES THE FINAL DESIGN DETAILS ARE DIFFERENT. FOR BIDDING AND CONSTRUCTION PURPOSES, REFER TO THE CONSTRUCTION PLANS AND DOCUMENTS FOR FINAL DESIGN INFORMATION ON THIS PROJECT. THE DEPARTMENT DOES NOT WARRANT OR GUARANTEE THE SUFFICIENCY OR ACCURACY OF THE INVESTIGATION MADE, NOR THE INTERPRETATIONS MADE, OR OPINION OF THE CONTRACTOR AS TO THE TYPE OF MATERIALS AND CONDITIONS TO BE ENCOUNTERED. THE BIDDER OR CONTRACTOR IS CAUTIONED TO MAKE SUCH INDEPENDENT SUBSURFACE INVESTIGATIONS AS HE DEEMS NECESSARY TO SATISFY HIMSELF AS TO CONDITIONS TO BE ENCOUNTERED ON THE PROJECT. THE CONTRACTOR SHALL HAVE NO CLAIM FOR ADDITIONAL COMPENSATION OR FOR AN EXTENSION OF TIME FOR ANY REASON RESULTING FROM THE ACTUAL CONDITIONS ENCOUNTERED AT THE SITE DIFFERING FROM THOSE INDICATED IN THE SUBSURFACE INFORMATION.

- NOTES:
1. THE INFORMATION CONTAINED HEREIN IS NOT IMPLIED OR GUARANTEED BY THE N. C. DEPARTMENT OF TRANSPORTATION AS ACCURATE NOR IS IT CONSIDERED PART OF THE PLANS, SPECIFICATIONS OR CONTRACT FOR THE PROJECT.
 2. BY HAVING REQUESTED THIS INFORMATION, THE CONTRACTOR SPECIFICALLY WAIVES ANY CLAIMS FOR INCREASED COMPENSATION OR EXTENSION OF TIME BASED ON DIFFERENCES BETWEEN THE CONDITIONS INDICATED HEREIN AND THE ACTUAL CONDITIONS AT THE PROJECT SITE.

PERSONNEL

INVESTIGATED BY TERRACON

DRAWN BY J. L. PEDRO

CHECKED BY N. T. ROBERSON

SUBMITTED BY N. T. ROBERSON

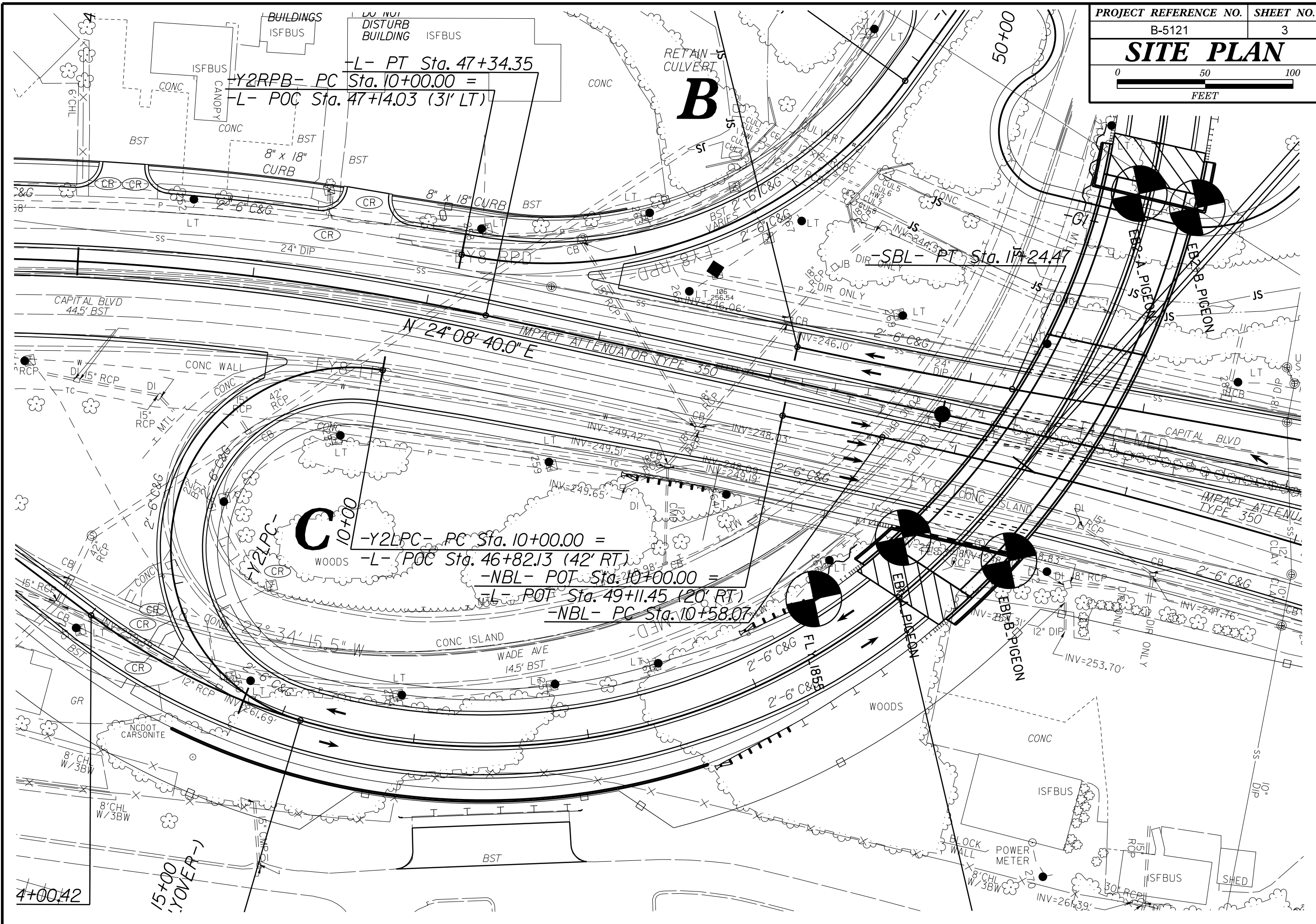
DATE FEBRUARY 2016



DocuSigned by:
Jaime Love Pedro 3/29/2016

B93674039B884B5
SIGNATURE DATE

DOCUMENT NOT CONSIDERED FINAL
UNLESS ALL SIGNATURES COMPLETED



-L- PT Sta. 47+34.35
 -Y2RPB- PC Sta. 10+00.00 =
 -L- POC Sta. 47+14.03 (31' LT)

C 10+00
 -Y2LPC- PC Sta. 10+00.00 =
 -L- POC Sta. 46+82.13 (42' RT)
 -NBL- POT Sta. 10+00.00 =
 -L- POT Sta. 49+11.45 (20' RT)
 -NBL- PC Sta. 10+58.07

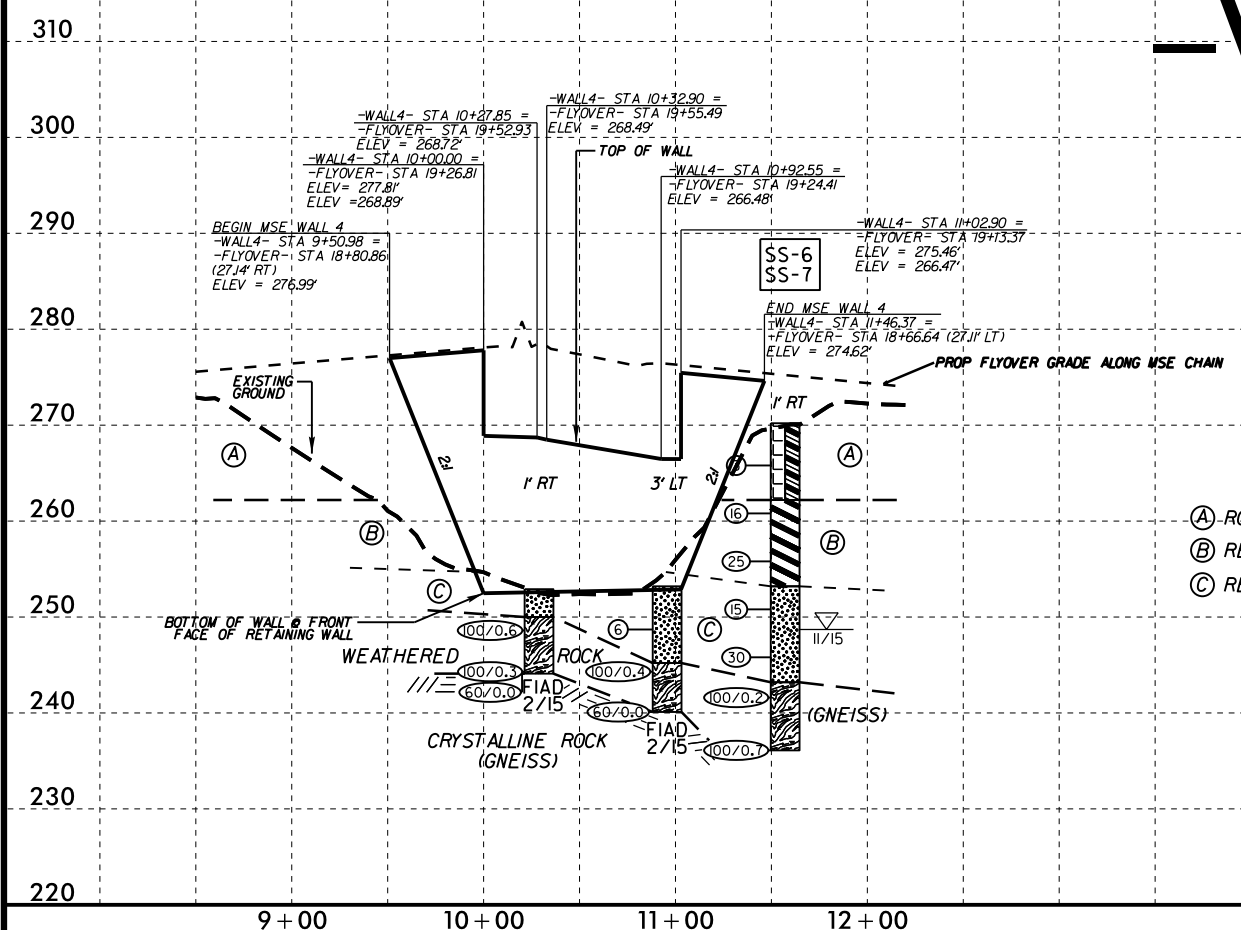
4+00.42

15+00
(OVER-)

5/28/99

-WALL 4-

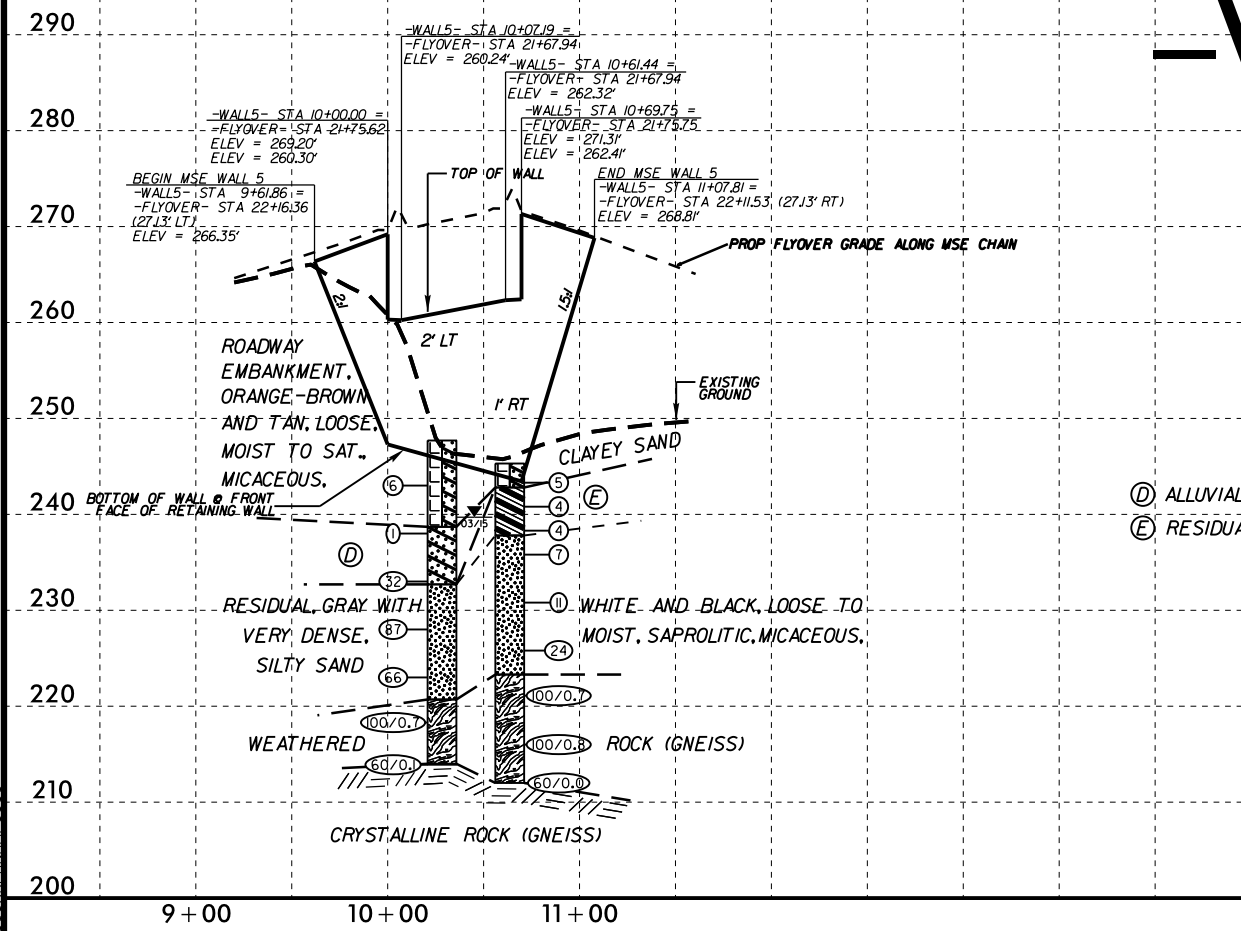
PROJECT REFERENCE NO. B-5121	SHEET NO. 4
ROADWAY DESIGN ENGINEER	HYDRAULICS ENGINEER
INCOMPLETE PLANS DO NOT USE FOR R/W ACQUISITION	
DOCUMENT NOT CONSIDERED FINAL UNLESS ALL SIGNATURES COMPLETED	



- (A) ROADWAY EMBANKMENT, BROWN, SOFT TO MEDIUM STIFF, MOIST TO WET, MICACEOUS, SANDY CLAY
- (B) RESIDUAL, ORANGE-BROWN AND TAN, STIFF TO HARD, DRY TO MOIST, MICACEOUS, SILTY CLAY WITH SOME SAND AND GRAVEL SEAMS
- (C) RESIDUAL, ORANGE-BROWN, TAN, AND GRAY, LOOSE TO DENSE, MOIST TO SATURATED, SAPROLITIC, MICACEOUS, SILTY SAND WITH SOME GRAVEL SEAMS

SOIL TEST RESULTS															
SAMPLE NO.	OFFSET	STATION	DEPTH INTERVAL	AASHTO CLASS.	L.L.	P.I.	% BY WEIGHT				% PASSING (SIEVES)			% MOISTURE	% ORGANIC
							C. SAND	F. SAND	SILT	CLAY	10	40	200		
SS-6	1 RT	11+57	8.4-9.9	A-7-5(22)	67	34	19.9	16.7	9.1	54.3	100	84	20	23.8	
SS-7	1 RT	11+57	18.4-19.9	A-2-4(0)	27	NP	43.9	36.6	10.9	8.6	92	70	22	11.8	

-WALL 5-



- (D) ALLUVIAL, GRAY AND BROWN, VERY LOOSE TO DENSE, MOIST, CLAYEY SAND WITH SOME BASAL GRAVEL
- (E) RESIDUAL, DARK GRAY TO ORANGE-BROWN, MEDIUM STIFF, WET TO SATURATED, SANDY CLAY WITH SILTY SAND LAYERS

I:\FEB-2016\1631
 L:\Projects\Investigation\TIP\B5121.GEO-RWALL4&5\CADD_GEO\TECH\Site&Sub\B5121.GEO_PFI_WALL4&5.dgn
 \$\$\$\$ SPRING \$\$\$